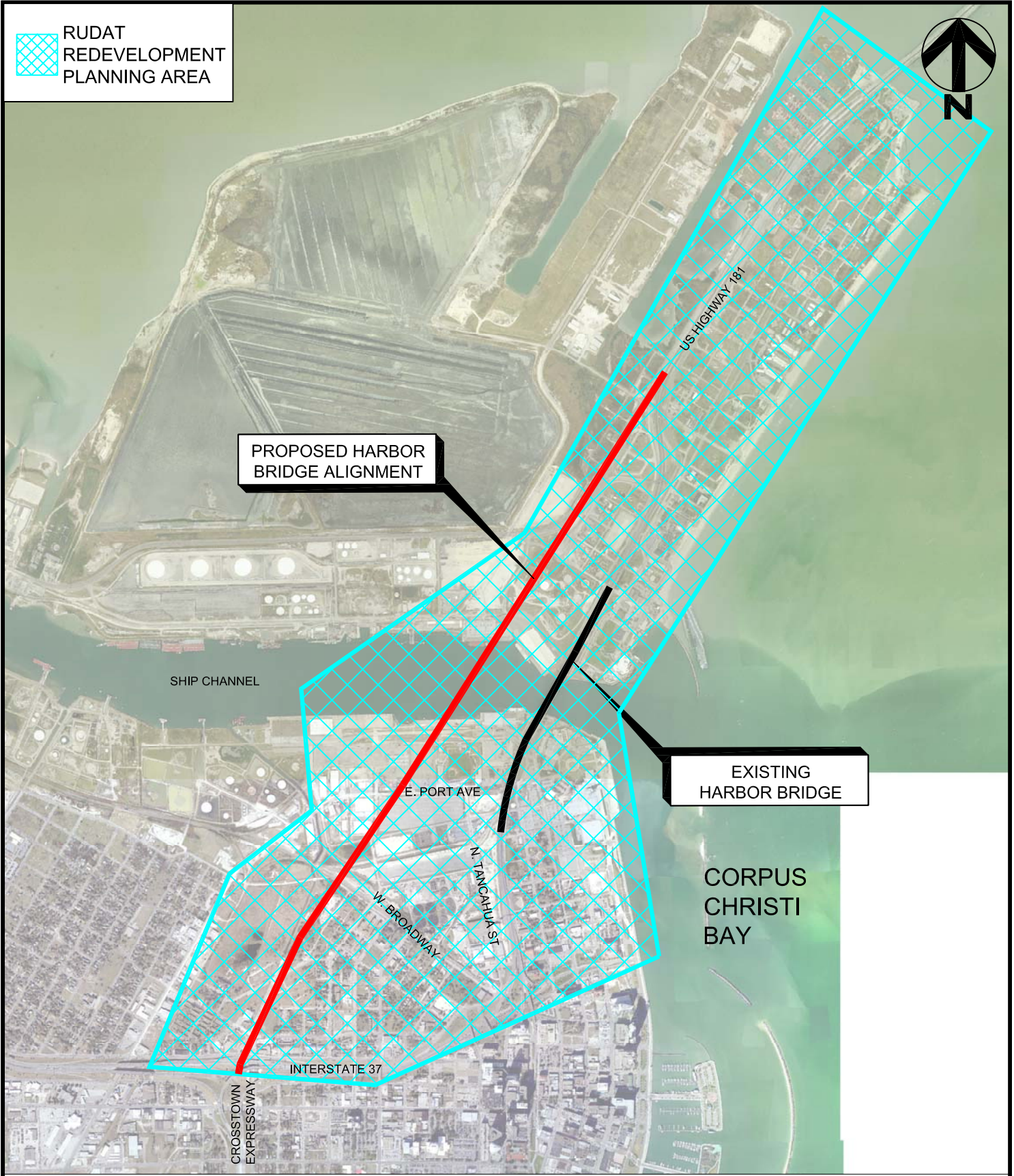




RUDAT
REDEVELOPMENT
PLANNING AREA



PROPOSED HARBOR
BRIDGE ALIGNMENT

EXISTING
HARBOR BRIDGE

LOCATION MAP

NOT TO SCALE

REGIONAL/URBAN DESIGN ASSISTANCE TEAM (RUDAT)
REDEVELOPMENT PLANNING APPLICATION FOR
HARBOR BRIDGE RELOCATION

CITY COUNCIL EXHIBIT
CITY OF CORPUS CHRISTI, TEXAS
DEPARTMENT OF ENGINEERING SERVICES
PAGE: 1 of 1

