

Urban Transportation Plan Williams Drive Realignment

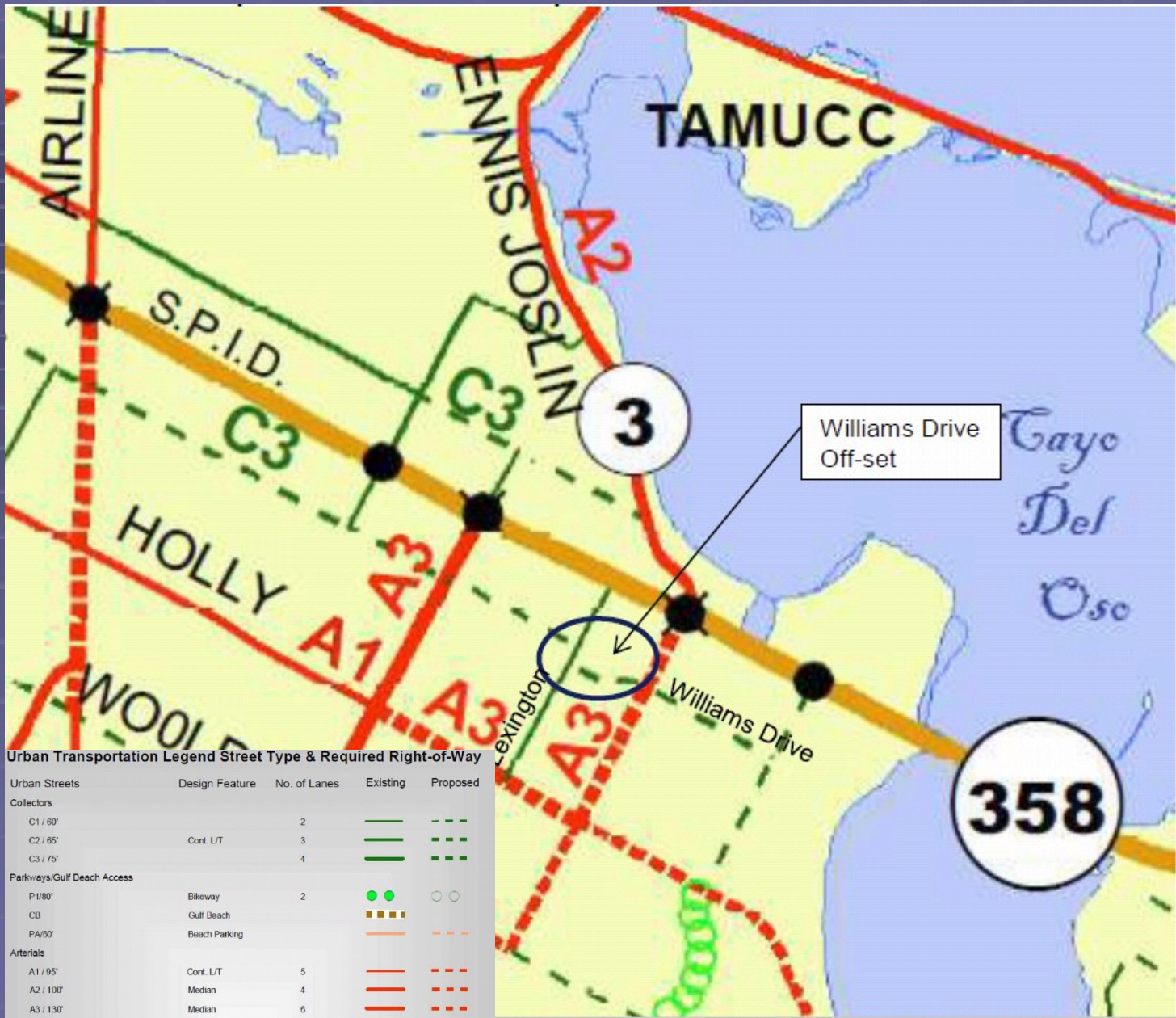


February 11, 2014 Public Hearing

Williams Drive

Planning and Environmental Services is requesting:

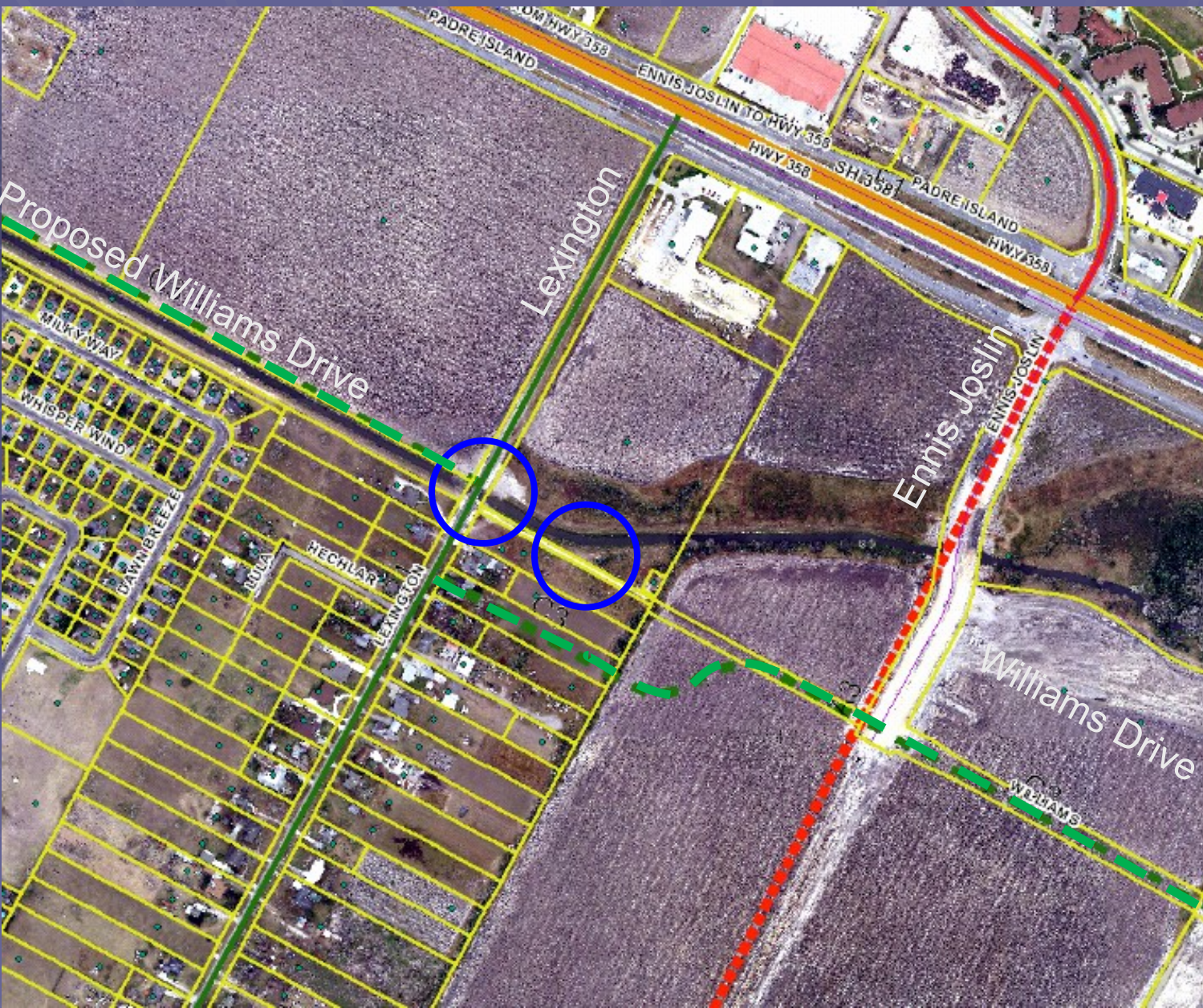
- An amendment to the Urban Transportation Plan to extend Williams Drive eastward of Lexington Drive to Ennis Joslin Boulevard parallel to SPID





Engineering Services has determined that the Williams Drive Drainage Ditch will be “boxed” so that Williams Drive can be placed on top of the drainage ditch.

Therefore, Williams Drive is proposed to be realigned parallel with SPID. (without need for two new bridges)



An off-set of Williams Drive was approved on the Urban Transportation Plan in 2010 to avoid the construction of two new bridges.

New Bridges 

Recommendations

- Development Services Department,
- Engineering Services Department, and
- Planning and Environmental Services Department:
Approval of a realignment of Williams Drive extended eastward of Lexington Drive to Ennis Joslin to parallel SPID

- Transportation Advisory Committee (Oct. 28, 2013):
Recommended approval of the realignment

- Planning Commission (Dec. 18, 2013):
Approval of the realignment