



---

# Parks and Recreation Athletic Field Crew Overview

Sergio Gonzalez  
Assistant Director

---

# Parks and Recreation Athletics Field Overview

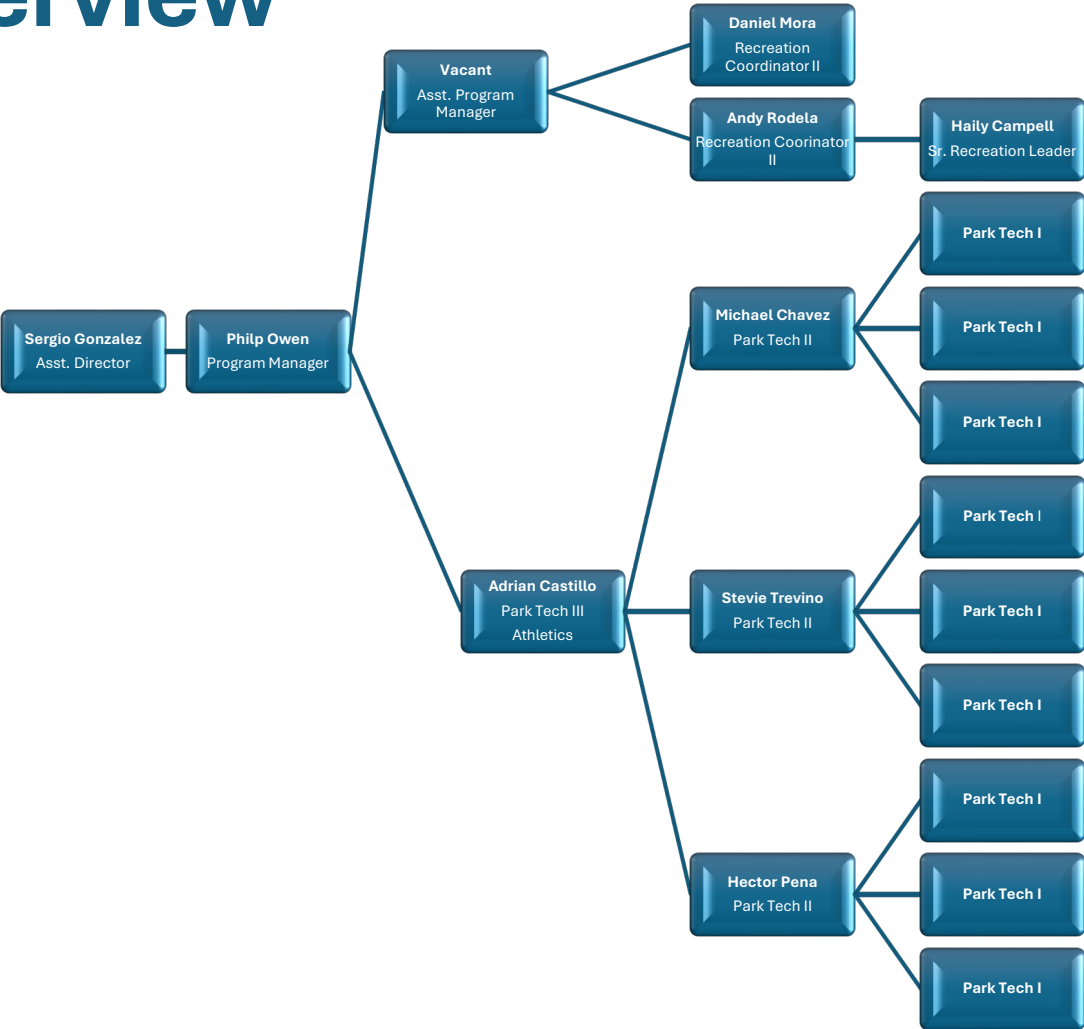
- Healthy Lifestyle
- Safe and Livable Neighborhoods
- **Economic Vitality**
- Sense of Community
- Attractive and Sustainable Environment
- Lifelong Learning

# VISION



# Parks and Recreation Athletics Field Overview

- Athletics Workgroup
  - ❖ 18 Full Time
  - ❖ 1 Part Time
- Athletics Operations
  - ❖ 4 Full Time
  - ❖ 1 Part Time
- Athletic Field Maintenance
  - ❖ 13 Full Time



# Parks and Recreation Athletics Field Overview

- Athletics Operation
  - ❖ League Play
  - ❖ Field Use Agreement Permit
  - ❖ Sports Recreation Programming
- Athletics Maintenance
  - ❖ Turf Maintenance
  - ❖ Small repairs
  - ❖ League play
  - ❖ Tournament play
  - ❖ Project Planning





# Parks and Recreation Athletics Field Overview

- Athletics Maintenance includes:
  - ❖ Mowing and trimming
  - ❖ Minor repairs
  - ❖ Turf Maintenance
    - ❖ Seeding
    - ❖ Conditioner
    - ❖ Red Dirt Replenish
    - ❖ Chemical Control
    - ❖ Irrigation
  - ❖ Project Planning
    - ❖ Set fields to tier I, II and III
    - ❖ Repair and/or replace fences
    - ❖ Concession stands upgrades/repairs



# Parks and Recreation Athletics Field Overview



- Purpose

- ❖ Provide quality and sustainably operated fields for the benefit and enjoyment of the public

- Guiding Principles

- ❖ Facility maintenance
- ❖ Support of Youth Programs
- ❖ Stewardship
- ❖ Public Access
- ❖ Healthy lifestyles





# Parks and Recreation Athletics Field Crew Plan

## • Phase 1

- Salinas Park
  - ❖ Express Soccer League
- Greenwood Sports Complex
  - ❖ Universal Little League
  - ❖ International Little League
- Bill Witt Park
  - ❖ Sting Soccer League
  - ❖ Padre Soccer League
  - ❖ Padre Sports League
  - ❖ United Little Miss Kickball

## • Phase 2

- Southside Sports Complex
  - ❖ National Little League
  - ❖ Oso Little League
  - ❖ Oso Little Miss Kickball

## • Phase 3 (Spring 2026)

- McArdle Sports Complex
  - ❖ Southside Kickball League
- Evelyn Price Park
  - ❖ Incarnate Word Academy
  - ❖ Marucci Elite
- Kiwanas Park
  - ❖ Kiwanas Sr. Softball League



# Parks and Recreation Sports Turf Maintenance



- Total Acreage of Athletic Sites  
Phase 1 and 2
  - ❖ 54 Athletic Sites
  - ❖ 260.85 Total Acres Maintained
- Budget
  - ❖ Expenses
    - ❖ \$1,953,474.60
  - ❖ Revenue as of 4/2/2024
    - ❖ \$129,397.91







# Parks and Recreation Field Use Agreements



- The City has historically leased or rented out most of its athletic fields to community organizations to operate and maintain.
- In exchange for assuming maintenance responsibilities, lessees have typically paid no fees.
- Most of the lease agreements have expired and are currently operating on a month-to-month basis.



# Parks and Recreation Field Use Agreements Best Practices



## Benchmark Cities

- Operating and maintenance practices vary widely across benchmark cities, and even across different areas within the same city.
- Benchmark cities trend towards a rental-only model.

CITY	Rental	Lease	Maintenance
Houston	Yes	No	City
San Antonio	Yes	Yes	City/Lessees
Dallas	Yes	No	City
Austin	Yes	Yes	City/Lessees
Fort Worth	Yes	No	City
El Paso	Yes	No	City
Arlington	Yes	Yes ( <i>limited</i> )	City/Lessees



# Parks and Recreation Field Use Agreements



## Terms

- **Long-term**
  - ❖ 1-year term with option to renew
- **Long-term youth recreational**
  - ❖ Limited to youth leagues only
  - ❖ 1-year term with option to renew
- **Standard rental**
  - ❖ First come, first serve
  - ❖ Reserved through online portal (RecPro)
  - ❖ Most flexible booking option

## Priority Groups

- Parks & Rec Sponsored Programs & Events
- Youth Recreational Leagues & Adaptive / Special Needs Programs
- Youth Competitive Leagues
- Adult Recreational Leagues
- Adult Competitive Leagues
- All Other Programs



# Parks and Recreation Field Use Agreements

## Rates:

- Youth Recreational Leagues
  - ❖ National Sanctioned Little League/Pony Leagues
  - ❖ \$4.25/HR
  - ❖ \$5.25/HR with Lights
  
- Hourly Rate Includes
  - ❖ Water
  - ❖ Electricity
  - ❖ Turf maintenance
  - ❖ Minor Repairs

## Benchmark Cities:

### Dallas

Type	Unlighted Field Hourly <7pm	Lighted Field Hourly >7pm	Deposit	Event Fee
Registered COD Adult Athletic Leagues	\$26	\$51	\$500	
Practice Use	\$26	\$51		
Youth Leagues (Mon - Fri)	\$13	\$31	\$200	
Youth Leagues (Weekend)	\$21	\$31	\$200	
Tournaments	\$26	\$51	\$200	\$200
Select Parks/Complexes	\$31	\$61		

### Austin

Type	Resident Fee	Non-Resident Fee	Deposit
Informal Hourly - Weekday Day (8a-5p)	\$25	\$28	N/A
Informal Hourly - Weekday Evening (5p-10p)	\$39	\$44	N/A
Informal Hourly - Weekend Day (8a-5p)	\$30	\$33	N/A
Informal Hourly - Weekend Evening (5p-10p)	\$56	\$60	N/A
Leagues/Events - Partial Day (<6 hours)	\$166	\$182	\$50
Leagues/Events - Full Day (>6 hours)	\$229	\$244	\$50
Leagues/Events - Utility Fee Per Field (5p-10p)	\$50	\$50	N/A
Leagues/Events - Extra Prep Per Field	\$50	\$50	N/A

### Fort Worth

Type	Hourly	Type	Hourly
Unlined practice fields (Unlighted)	\$15	Natural turf soccer game fields (Lighted)	\$65
Unlined practice fields (Lighted)	\$20	Synthetic turf multi-purpose fields (Unlighted)	\$40
Baseball/softball game fields (Unlighted)	\$30	Synthetic turf multi-purpose fields (Lighted)	\$70
Baseball/softball game fields (Lighted)	\$40	Tournament field fee for soccer fields (Unlighted)	\$35

# Parks and Recreation Athletics Field Use Agreements



- The Parks and Recreation 10-year Master Plan recommends Youth Sports (Rec.) cost recovery of 25%-75%

## Recreational Service Classifications

CORE PROGRAM AREA	BENEFIT LEVEL	CLASS.	PRICING STRATEGY	COST RECOVERY GOAL
AQUATICS	INDIVIDUAL	ESSENTIAL	GENERAL FUND	0 - 25%
OUTDOOR RECREATION	INDIVIDUAL	VALUE ADDED	USER FEES	75%+
SENIORS	COMMUNITY	ESSENTIAL	GENERAL FUND	0 - 25%
SPECIAL EVENTS	COMMUNITY	ESSENTIAL	GENERAL FUND	0 - 25%
YOUTH DEVELOPMENT	INDIVIDUAL	ESSENTIAL	GENERAL FUND	0 - 25 %
YOUTH SPORTS (REC.)	GROUP	IMPORTANT	SUBSIDIZED	25% - 75%
YOUTH SPORTS (COMP.)	INDIVIDUAL	VALUE ADDED	USER FEES	75%+

Recovery Rate:					
25%			Fields		
CATAGORY	Cost	Hours	w/o Lights	w/ Lights	Total
Maintance Cost	\$ 193,750.00		76		\$ 2,549.34
Water Cost	\$ 34,655.25		76		\$ 455.99
Electricity Cost	\$ 31,250.00	720		49	\$ 2,126.74
<b>TOTAL</b>	<b>\$ 259,655.25</b>				<b>\$ 5,132.07</b>
With Lights					
Rate	Cost	Hours	Fields	Per Hour	Proposed Rate
	\$ 5,132.07	720	49	\$ 7.13	5.25
Without Lights					
Rate	Cost	Hours	Fields	Per Hour	Proposed Rate
	\$ 3,005.33	720	76	\$ 4.17	4.25

# Parks and Recreation Sports Turf Maintenance

- Areas of Improvement

- ❖ Aeration
- ❖ Top Dressing
- ❖ Minor Repairs
- ❖ Upgrades to fields
- ❖ Red Dirt replacement
- ❖ Irrigation repairs

- Challenges

- ❖ Consistent field usage
- ❖ Years of neglected maintenance
- ❖ Organizations determination letter
- ❖ Organizations resisting change







---

# Questions?

---