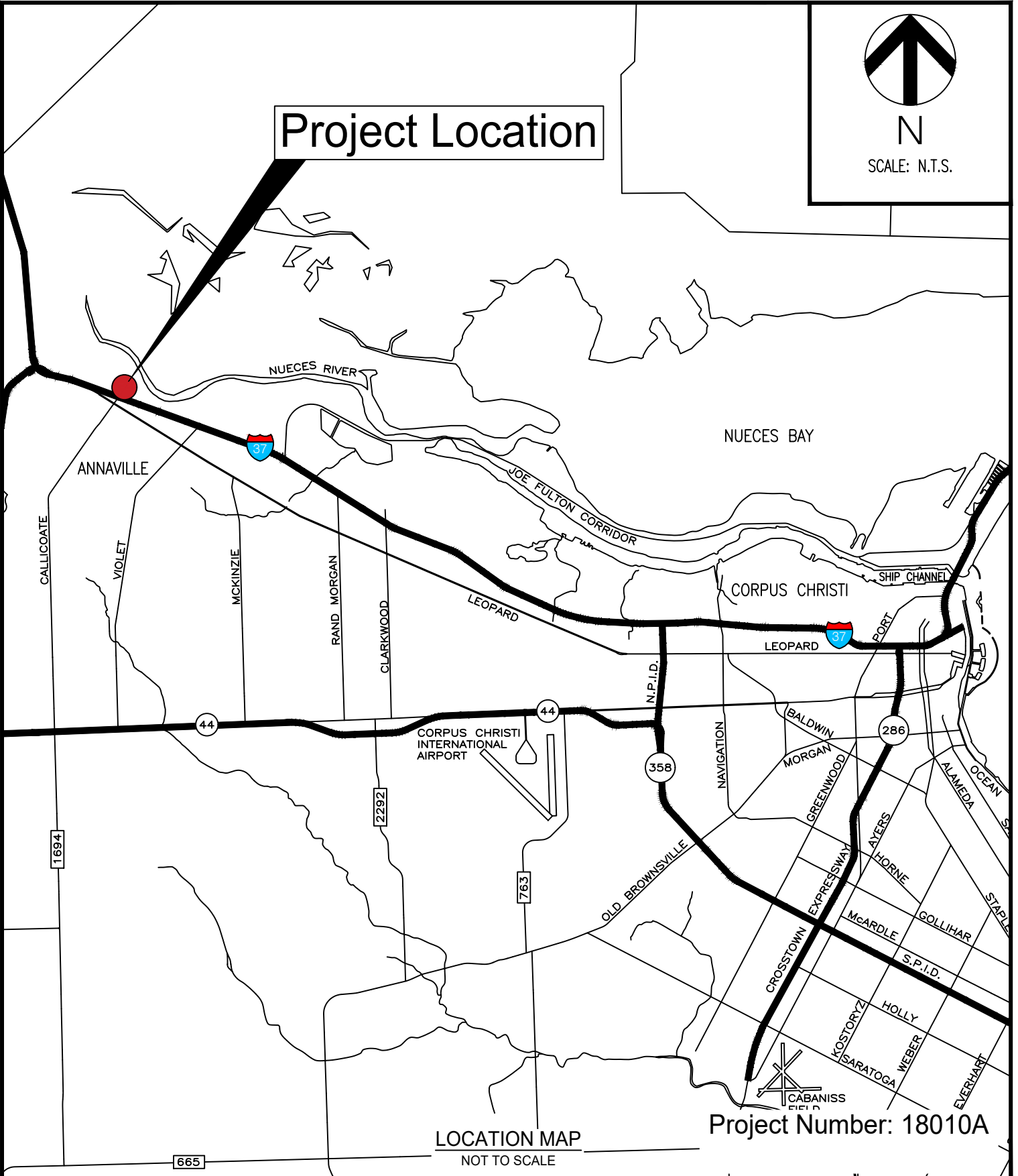


Project Location



SCALE: N.T.S.



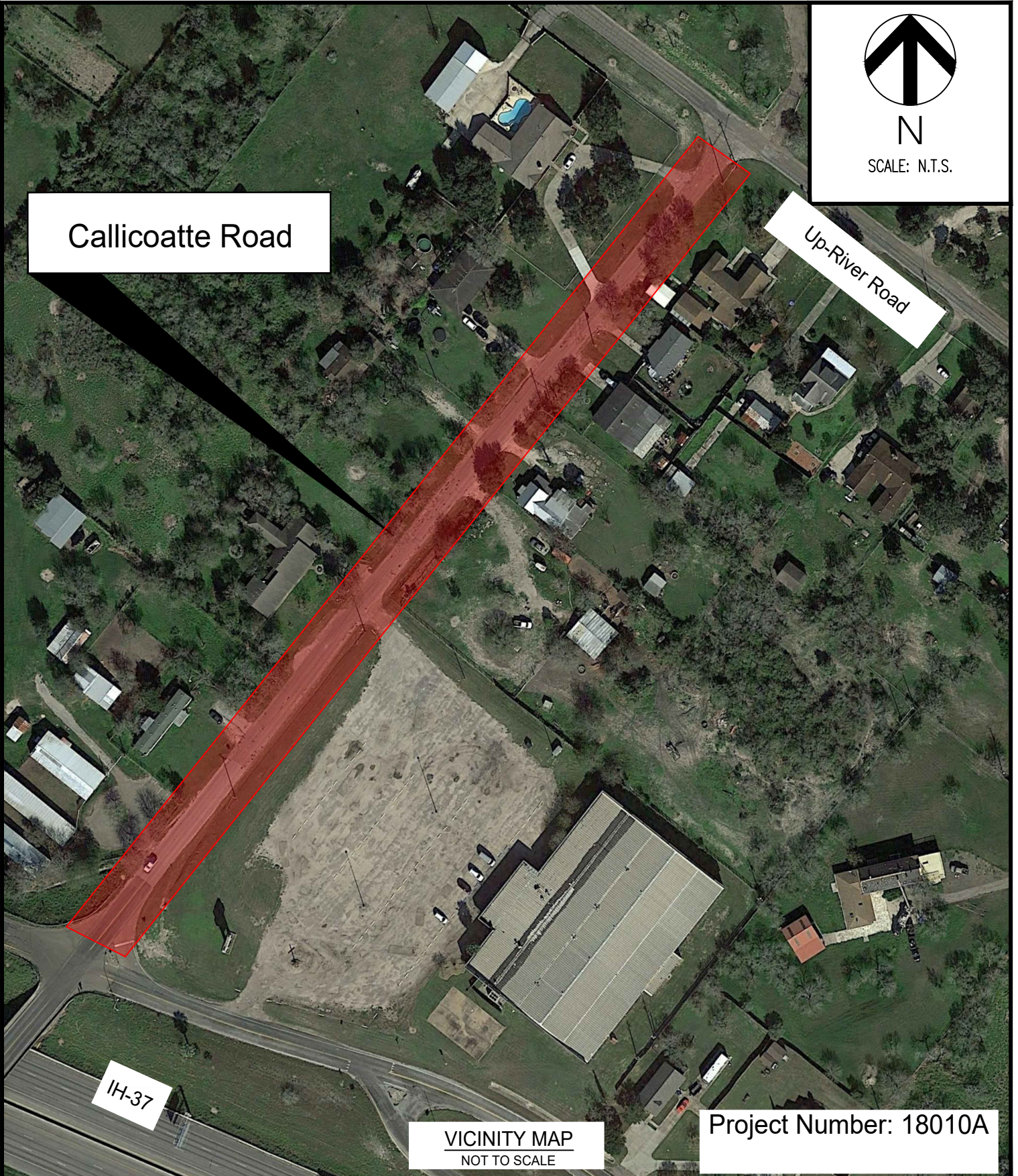
LOCATION MAP
NOT TO SCALE

Project Number: 18010A

Callicoate Road from IH37
to Up River Road
(Bond 2018, Proposition A)

CITY COUNCIL EXHIBIT
CITY OF CORPUS CHRISTI, TEXAS
DEPARTMENT OF ENGINEERING SERVICES





N

SCALE: N.T.S.

Callicoatte Road

Up-River Road

IH-37

VICINITY MAP
NOT TO SCALE

Project Number: 18010A

Callicoatte Road from IH37
to Up River Road
(Bond 2018, Proposition A)

CITY COUNCIL EXHIBIT
CITY OF CORPUS CHRISTI, TEXAS
DEPARTMENT OF ENGINEERING SERVICES

