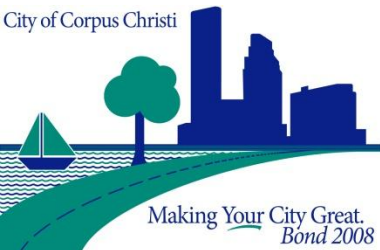




# Oso Bay Area Park Phase 1 Trail Improvements Bond Issue 2008

*Council Presentation*

*June 26, 2012*

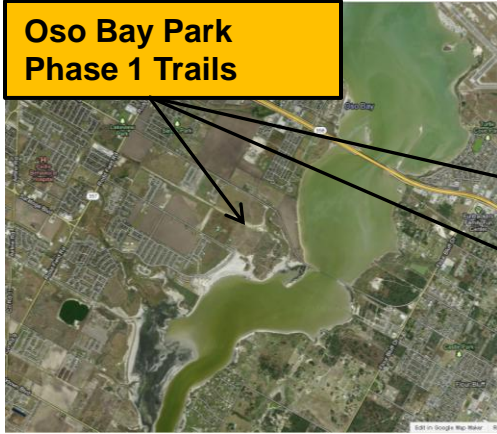




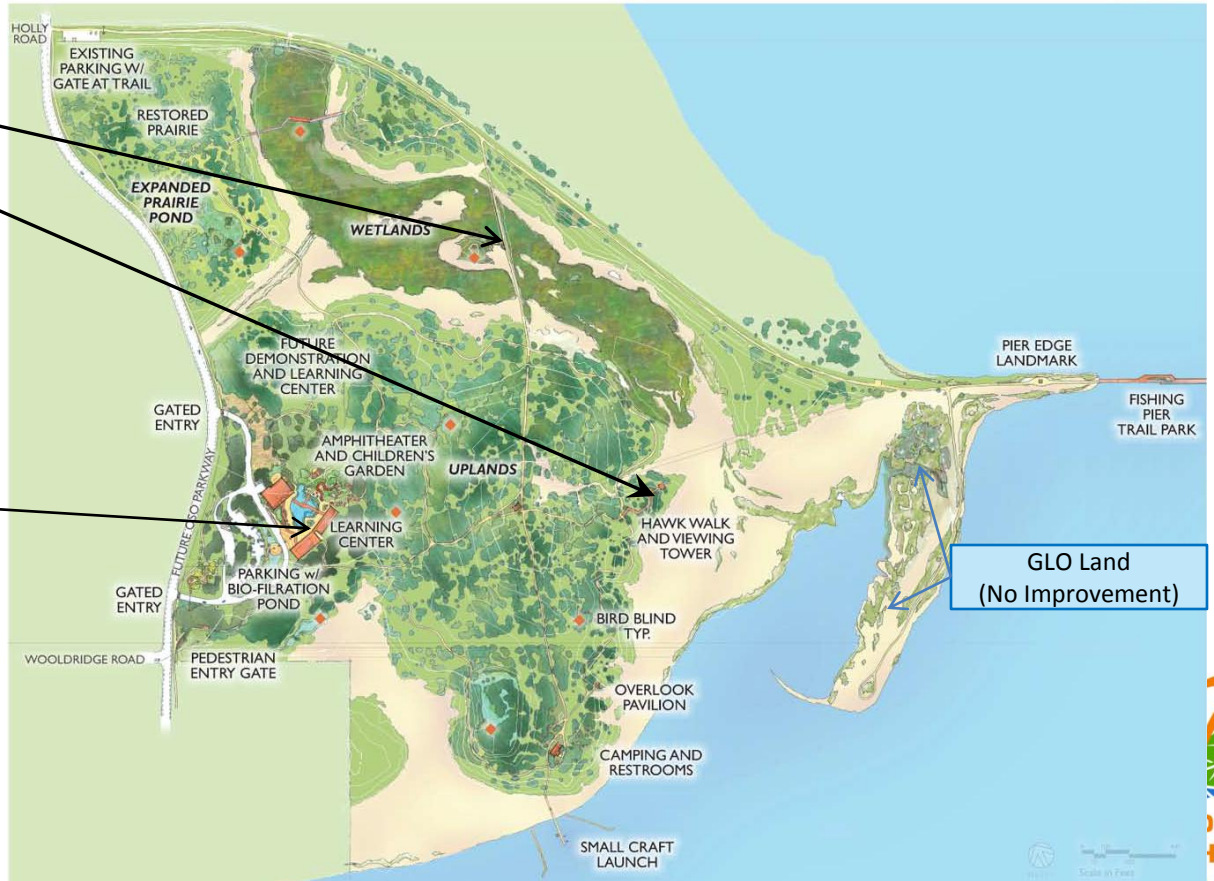
City of  
Corpus Christi

# Project Location

Oso Bay Park  
Phase 1 Trails



Phase 2  
(Future)



City of Corpus Christi



Making Your City Great.  
Bond 2008



CORPUS  
CHRISTI  
PARKS &  
RECREATION

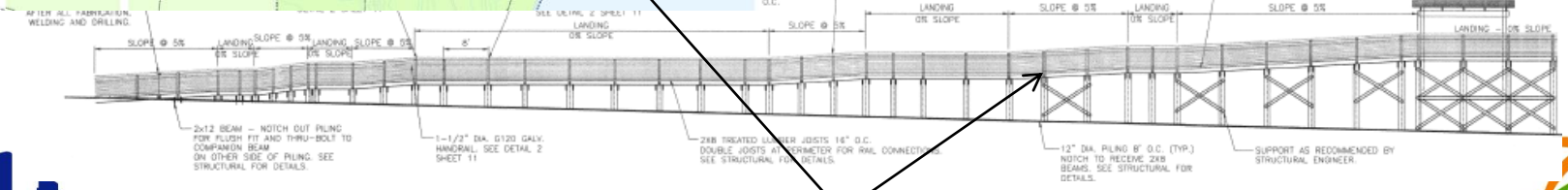


City of  
Corpus  
Christi

# Project Scope



- ### Phase 1 Trails
- 4,300 Linear Feet (At Grade)
  - 8-foot to 10-foot wide
  - Trail Construction Material:
    - Stabilized Native Soil (410 LF)
    - Decomposed Granite (3070 LF)
    - Reinforced Concrete (820 LF)
  - 282 LF of 8-foot wide HawkWalk
    - Birding Platform
    - Shade Structure
    - Fabricated Benches
    - Handrails



HawkWalk



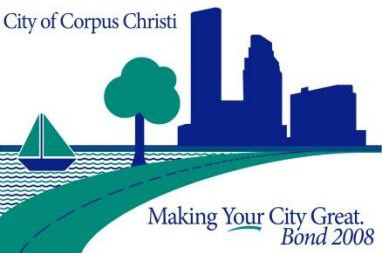
City of  
Corpus  
Christi

# Project Schedule

2011						2012										
Jul	Aug	Sep	Oct	Nov	Dec	Jan	Feb	Mar	Apr	May	Jun	Jul	Aug	Sep	Oct	Nov
Design									Bid/Award			Construction				

1. Construction Phase: 120 calendar Days
2. Projected Schedule reflects City Council award for Construction in June 2012

City of Corpus Christi



Making Your City Great.  
Bond 2008



CORPUS  
CHRISTI  
PARKS &  
RECREATION



City of  
Corpus  
Christi

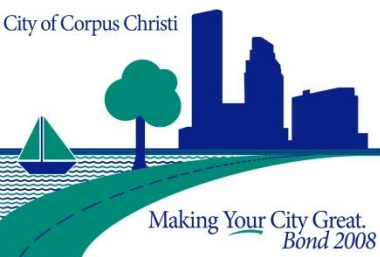
# Project Cost

<b>FUNDS AVAILABLE:</b>	
Bond 2008 Park Funds	\$2,750,000.00
Coastal Impact Assistance Program 2010	1,500,000.00
Texas Parks & Wildlife Outdoor Grant	500,000.00
Texas Parks & Wildlife National Recreation Trails Grant	200,000.00
Coastal Management Program Grant	100,000.00
Coastal Bend Bays & Estuaries Program	20,000.00
Supplemental Environmental Program (SEP) Grant	41,566.00
Community Enrichment Fund (Land Purchase)	563,884.89
Capital Improvement Programs	350,125.00
<b>TOTAL</b>	<b>\$6,025,575.89</b>
<b>FUNDS REQUIRED:</b>	
<b>Construction - Phase 1 (H2O Construction Inc.)</b>	<b>\$638,062.00</b>
Construction - Phase 2 (Estimated)*	2,400,000.00
Construction - Extension of Oso Parkway (Estimated)	325,200.00
Contingencies	504,489.30
Land Purchase (to date)	563,884.89
<b>Consultant Fees:</b>	
Design Consultant, Phase One (RVi)**	286,980.00
Design Consultant, Phase Two (RVi)	616,670.00
Other Consultants (Geotechnical, State Land Survey, etc.)	57,450.00
<b>Reimbursements:</b>	
	622,353.43
<b>TOTAL</b>	<b>\$6,015,089.62</b>
<b>ESTIMATED PROJECT BUDGET BALANCE</b>	<b>10,486.27</b>

\* Construction is contingent upon receipt of funding from future grants and potential donors

\*\*Original Contract Approved by Council on January 11, 2011

City of Corpus Christi



Making Your City Great.  
Bond 2008



**CORPUS  
CHRISTI  
PARKS &  
RECREATION**