

NOTES:  
 1. BASIS OF BEARING IS THE UTM 14 FEET COORDINATE SYSTEM WGS 84, W 96°-102° ZONE.  
 2. SURVEYOR HAS MADE NO INVESTIGATION OR INDEPENDENT SEARCH FOR EASEMENTS, ENCUMBRANCES, OR ANY OTHER FACTS THAT AN ACCURATE AND CURRENT TITLE SEARCH MAY DISCLOSE.  
 3. SEE ATTACHED LEGAL DESCRIPTION.

# EXHIBIT "A"

1 OF 2

**Legal description:**

BEING a 30 foot permanent pipeline easement in the B.S. & F, Survey, Abstract Number 857, and the J. Warner Survey, Abstract Number 909, Nueces County, Texas, and being a portion of a certain tract as described in a deed to The City of Corpus Christi, as recorded in Document Number 2003063324, Official Public Records, Nueces County, Texas, said easement being described as follows:

COMMENCING at a 5/8 inch iron rod found for an angle point in the northeast line of said City of Corpus Christi tract, and for the southeast corner of a certain tract as described in a deed to Port of Corpus Christi Authority of Nueces County Texas, as recorded in Volume 1926, Page 909, Deed Records, Nueces County, Texas;

THENCE, N 63°16'56" W, with the northeast line of said City of Corpus Christi tract, and the south line of said Port of Corpus Christi tract, a distance of 67.15 feet, to the POINT OF BEGINNING [N:10107954.28, E:2108762.46] of this easement, in the northeast line of said City of Corpus Christi tract, and the a south line of said Port of Corpus Christi tract;

THENCE, S 45°01'12" E, through the said City of Corpus Christi tract, a distance of 535.95 feet, to the point for a corner;

THENCE, S 41°32'09" E, continuing through the said City of Corpus Christi tract, a distance of 207.59 feet, to the point for a corner, in the southeast line of said City of Corpus Christi tract, and an interior northwest line of a certain tract as described in a deed to Flint Hills Resources Corpus Christi, LLC., as recorded in Document Number 2010040428, Official Public Records, Nueces County, Texas,

THENCE, S 43°03'09" W, with the southeast line of said City of Corpus Christi tract, and the interior northwest line of said Flint Hills tract, a distance of 30.19 feet, to the point for a corner, from which a 5/8 inch capped iron rod found marked "URBAN ENGR CC TX" for an angle point in the southeast line of said City of Corpus Christi tract, and an interior corner of said Flint Hills tract, bears S 43°03'09" W, a distance of 260.40 feet;

THENCE, N 41°32'09" W, through the said City of Corpus Christi tract, a distance of 209.52 feet, to the point for a corner;

THENCE, N 45°01'12" W, continuing through the said City of Corpus Christi tract, a distance of 625.95 feet, to the point for a corner;

THENCE, S 63°16'56" E, with the northeast lone of said City of Corpus Christi tract, and the south line of said Port of Corpus Christi tract, a distance of 95.73 feet, to the Point of Beginning, for a total of 23,685 square feet, 0.54 acres more or less.



I, GEORGE E. LUCAS, REGISTERED PROFESSIONAL LAND SURVEYOR, DO HEREBY CERTIFY THAT TO THE BEST OF MY KNOWLEDGE THIS PLAT IS TRUE AND CORRECT OF A SURVEY MADE ON THE GROUND.

GEORGE E. LUCAS  
 CELCO SURVEYING  
 REGISTERED PROFESSIONAL LAND SURVEYOR  
 TEXAS REGISTRATION NO. 4160

## DCP Sand Hills Pipeline, LLC

### 30' PERMANENT PIPELINE EASEMENT

ACROSS THE  
 THE CITY OF CORPUS CHRISTI PROPERTY  
 B.S. & F. SURVEY, ABSTRACT No. 857  
 J. WARNER SURVEY, ABSTRACT No. 909  
 NUECES COUNTY, TEXAS

TEMPORARY WORKSPACE 34,794 SQ. FT.	JOB: FHR	DRAWN BY: CMB	CHECKED: GEL
	AFE: 500214293	DATE: 09/16/16	REV: 1/6/17
SQUARE FOOTAGE: 23,685 ACRES: 0.54	LINK FIELD SERVICES INCORPORATED P.O. BOX 1485 MINERAL WELLS, TX 76067 800-462-7199		CELCO SURVEYING REG. # 10193975 2205 STONECREST PATH NEW BRAUNFELS, TX 78130 512-635-4857
CENTERLINE FOOTAGE: 789.50' RODS: 47.85			

P:\DCP\Sandhills Projects\Flint Hills to Sand Hills\Certified Plats\6 - The City of Corpus Christi REV-1.dwg

NOTES:  
 1. BASIS OF BEARING IS THE UTM 14 FEET COORDINATE SYSTEM WGS 84, W 96-102 ZONE.  
 2. SURVEYOR HAS MADE NO INVESTIGATION OR INDEPENDENT SEARCH FOR EASEMENTS, ENCUMBRANCES, OR ANY OTHER FACTS THAT AN ACCURATE AND CURRENT TITLE SEARCH MAY DISCLOSE.  
 3. SEE ATTACHED LEGAL DESCRIPTION.

**EXHIBIT "B"**  
 2 OF 2

**J. WARNER SURVEY  
 ABSTRACT NO. 909**

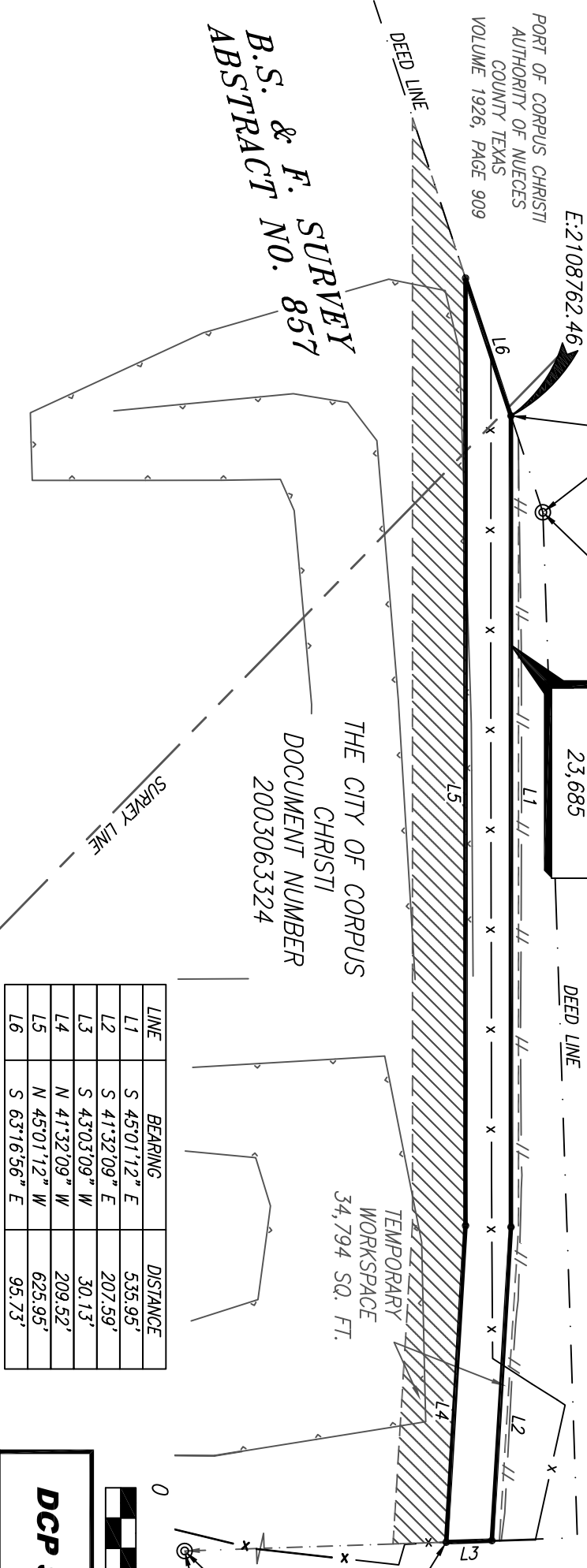
FLINT HILLS  
 RESOURCES CORPUS  
 CHRISTI, LLC  
 DOCUMENT NUMBER  
 2010040428

**POINT OF BEGINNING**  
 N:10107954.28  
 E:2108762.46  
 N 63°16'56" W  
 67.15'

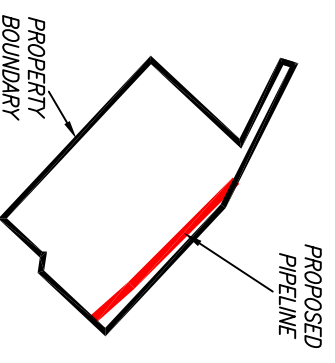
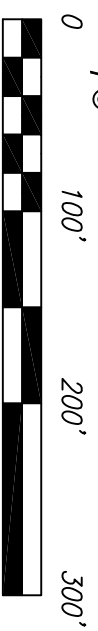
**30' EASEMENT**  
 SQUARE FOOTAGE:  
 23,685

**B.S. & F. SURVEY  
 ABSTRACT NO. 857**

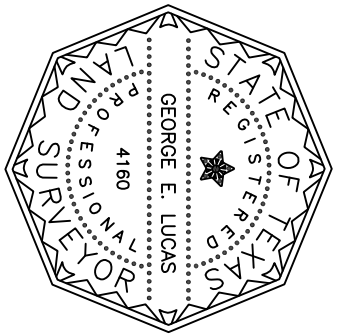
THE CITY OF CORPUS  
 CHRISTI  
 DOCUMENT NUMBER  
 2003063324



LINE	BEARING	DISTANCE
L1	S 45°01'12" E	535.95'
L2	S 41°32'09" E	207.59'
L3	S 43°03'09" W	30.13'
L4	N 41°32'09" W	209.52'
L5	N 45°01'12" W	625.95'
L6	S 63°16'56" E	95.73'



VICINITY MAP  
 N.T.S.



I, GEORGE E. LUCAS, REGISTERED PROFESSIONAL LAND SURVEYOR, DO HEREBY CERTIFY THAT TO THE BEST OF MY KNOWLEDGE THIS PLAN IS TRUE AND CORRECT OF A SURVEY MADE ON THE GROUND.

GEORGE E. LUCAS  
 CELCO SURVEYING  
 REGISTERED PROFESSIONAL LAND SURVEYOR  
 TEXAS REGISTRATION NO. 4160

P:\DCP Sand Hills Projects\Flint Hills to Sand Hills\Certified Plats\6 - The City of Corpus Christi REV-1.dwg

TEMPORARY WORKSPACE 34,794 SQ. FT.	SQUARE FOOTAGE: 23,685 ACRES: 0.54
CENTERLINE FOOTAGE: 789.50' RODS: 47.85	

**DCP Sand Hills Pipeline, LLC**

**30' PERMANENT PIPELINE EASEMENT**

ACROSS THE  
 THE CITY OF CORPUS CHRISTI PROPERTY  
 B.S. & F. SURVEY, ABSTRACT NO. 857  
 J. WARNER SURVEY, ABSTRACT NO. 909  
 NUECES COUNTY, TEXAS

JOB: FHR	DRAWN BY: CMB	CHECKED: GEL
A.F.E.: 500214293	DATE: 09/16/16	REV: 1/6/17
<b>LINK FIELD SERVICES INCORPORATED</b> P.O. BOX 1485 MINERAL WELLS, TX 76067 800-482-7199	<b>CELCO SURVEYING</b> REG. # 10193975 2205 STONECREST PATH NEW BRAUNFELS, TX 78130 512-635-4857	