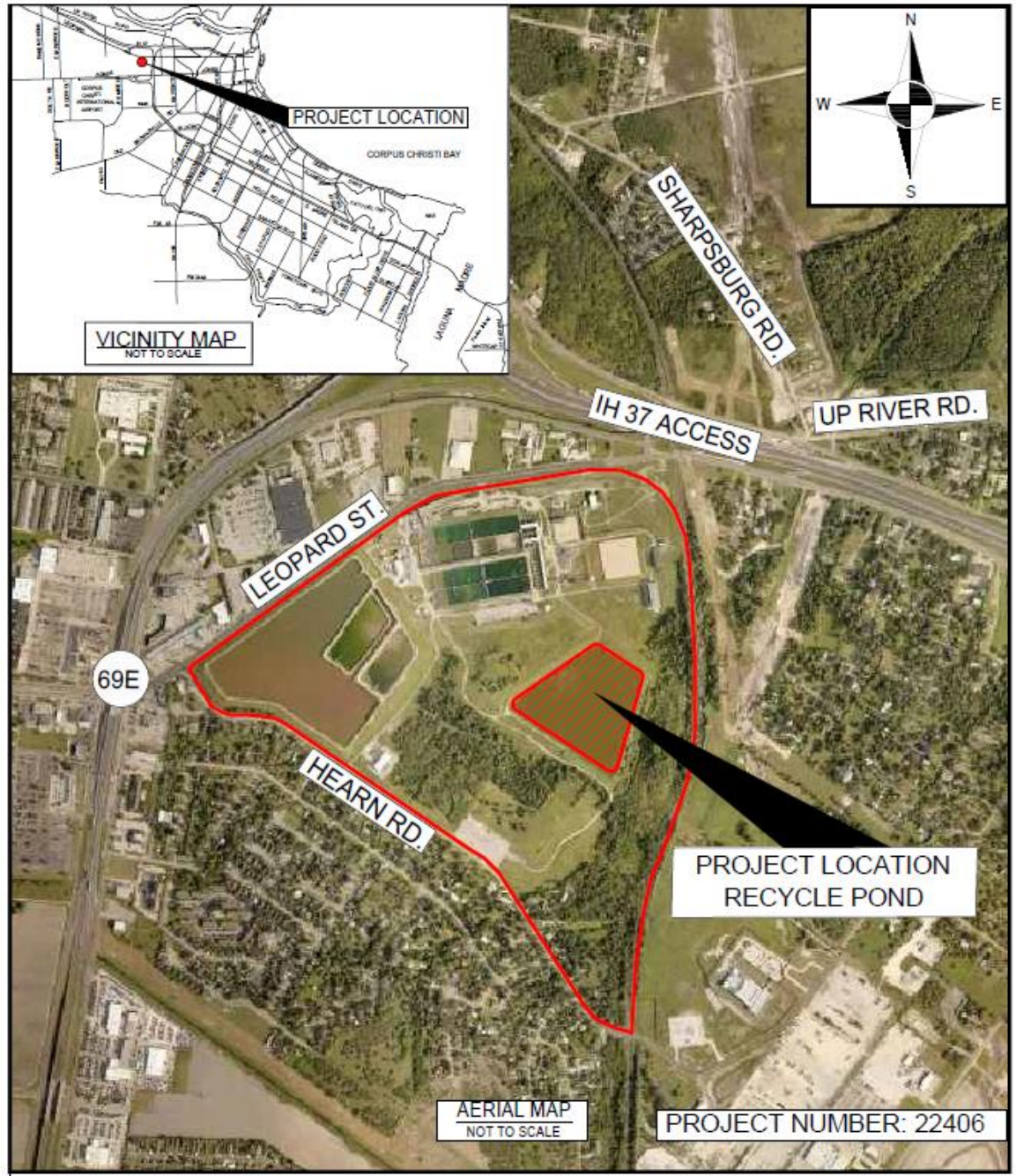




ONSWTP Recycle Pond Improvements



Council Presentation
May 23, 2023





Project Scope



- The wash water recycle pond at O.N. Stevens Water Treatment Plant is an earthen berm pond with a submersible pump station and intake structure. The earthen berm has approximately 300-ft exhibiting leakage and erosion of the top bank due to fluctuating water levels within the pond. Additionally, the pump station concrete structure has leakage.
- This item awards a professional services contract to provide engineering evaluation services for repairs and improvements needed at the O.N. Stevens Water Treatment Plant Wash Water Recycle Pond.



Project Schedule



2023
May - October
Engineering Evaluation

Projected schedule reflects City Council award of professional services in May 2023 with anticipated engineering evaluation completion by October 2023.