

BASS & WELSH ENGINEERING

TX Registration No. F-52
Survey Registration No. 100027-00
P.O. Box 6397
Corpus Christi, TX 78466-6397

September 10, 2013

Field Note Description Easement Closure

Being a tract situated in Corpus Christi, Nueces County, Texas being located on Lot 1, Incarnate Word Subdivision, as shown on the map thereof recorded in Volume 68, at Page 19 of the Map Records of Nueces County, Texas, said easement being a portion of those easements dedicated on the referenced plat and being more particularly described by metes and bounds as follows:

COMMENCING at the northeast corner of said Lot 1, Incarnate Word Subdivision, THENCE S 28°55'23" W along the east line of Lot 1, a distance of 412.62 feet to a point for the point of **BEGINNING** of this tract;

THENCE continuing along the east line of Lot 1, S 28°55'23" W a distance of 33.74 feet to a point for a corner of this tract;

THENCE S 75°28'29" W a distance of 274.43 feet to a point for an interior corner of this tract;

THENCE S 16°03'13" E a distance of 2.07 feet to a point for a corner of this tract;

THENCE S 73°56'47" W a distance of 17.00 feet to a point for the most southerly corner of this tract;

THENCE N 16°03'13" W a distance of 17.00 feet to a point for a corner of this tract;

THENCE N 73°56'47" E a distance of 20.00 feet to a point for an intermediate corner of this tract;

THENCE N 75°28'29" E a distance of 251.22 feet to a point for an interior corner of this tract;

THENCE N 61°04'37" W a distance of 216.69 feet to a point for a corner of this tract;

THENCE N 28°56'47" E a distance of 15.00 feet to a point for a corner of this tract;

THENCE S 61°04'13" E a distance of 6.92 feet to a point for an interior corner of this tract;

THENCE N 74°16'32" E a distance of 169.10 feet to a point for an interior corner of this tract;

THENCE N 16°03'13" W a distance of 165.39 feet to a point for an interior corner of this tract;

THENCE N 61°03'13" W a distance of 285.11 feet to a point for an interior corner of this tract;

THENCE S 28°55'23" W a distance of 8.05 feet to a point for a corner of this tract;

THENCE N 61°01'36" W a distance of 15.00 feet to a point for a corner of this tract;

THENCE N 28°55'23" E a distance of 8.04 feet to a point for an interior corner of this tract;

EXHIBIT "A"

MBJ:sab,wrf

07013-Field Note Desc-UE Closure.doc

THENCE N 61°03'13" W a distance of 47.41 feet to a point for the most westerly corner of this tract;

THENCE N 28°55'23" E a distance of 198.97 feet to a point in the north line of Lot 1 for the northmost corner of this tract;

THENCE S 61°02'50" E along the north line of Lot 1, a distance of 15.00 feet to a point for a corner of this tract;

THENCE S 28°55'23" W a distance of 183.97 feet to a point for an interior corner of this tract;

THENCE S 61°03'13" E a distance of 338.74 feet to a point for a corner of this tract;

THENCE S 16°03'13" E a distance of 186.69 feet to a point for a corner of this tract;

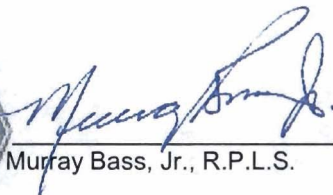
THENCE S 74°16'32" W a distance of 169.01 feet to a point for an interior corner of this tract;

THENCE S 61°04'37" E a distance of 198.69 feet to a point for an interior corner of this tract, said point lying in the west boundary of the existing 15.00 foot utility easement of Lot 1;

THENCE N 28°55'23" E along the west line of said 15.00 foot utility easement, a distance of 22.02 feet to a point for a corner of this tract;

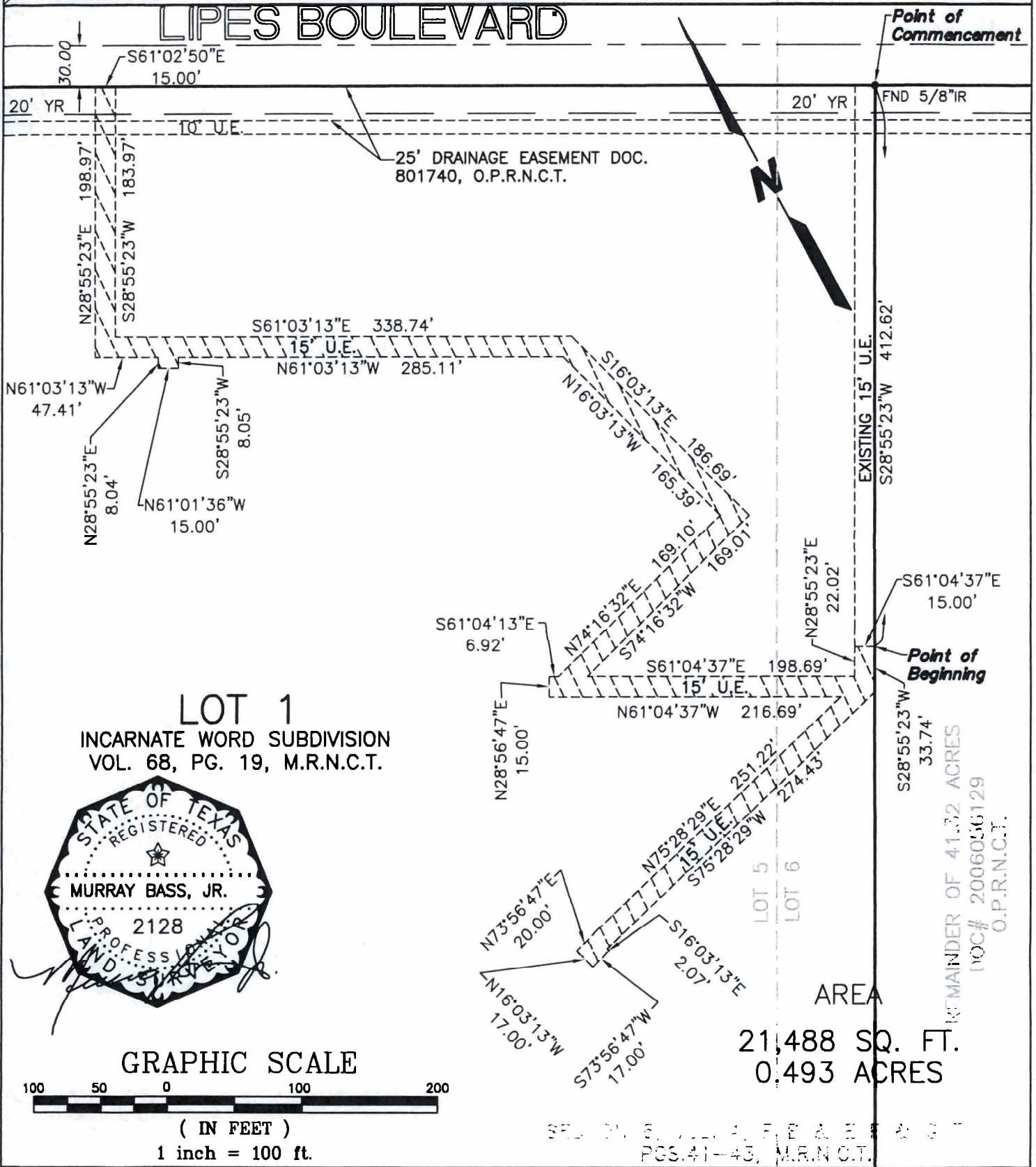
THENCE S 61°04'37" E a distance of 15.00 feet to the **POINT OF BEGINNING**, forming a tract embracing 21,488 square feet (0.493 acres).




Murray Bass, Jr., R.P.L.S.

Note: Basis of Bearing is the east boundary of Lot 1, Incarnate Word Subdivision as shown on the map of record.

LIPES BOULEVARD



LOT 1
INCARNATE WORD SUBDIVISION
VOL. 68, PG. 19, M.R.N.C.T.

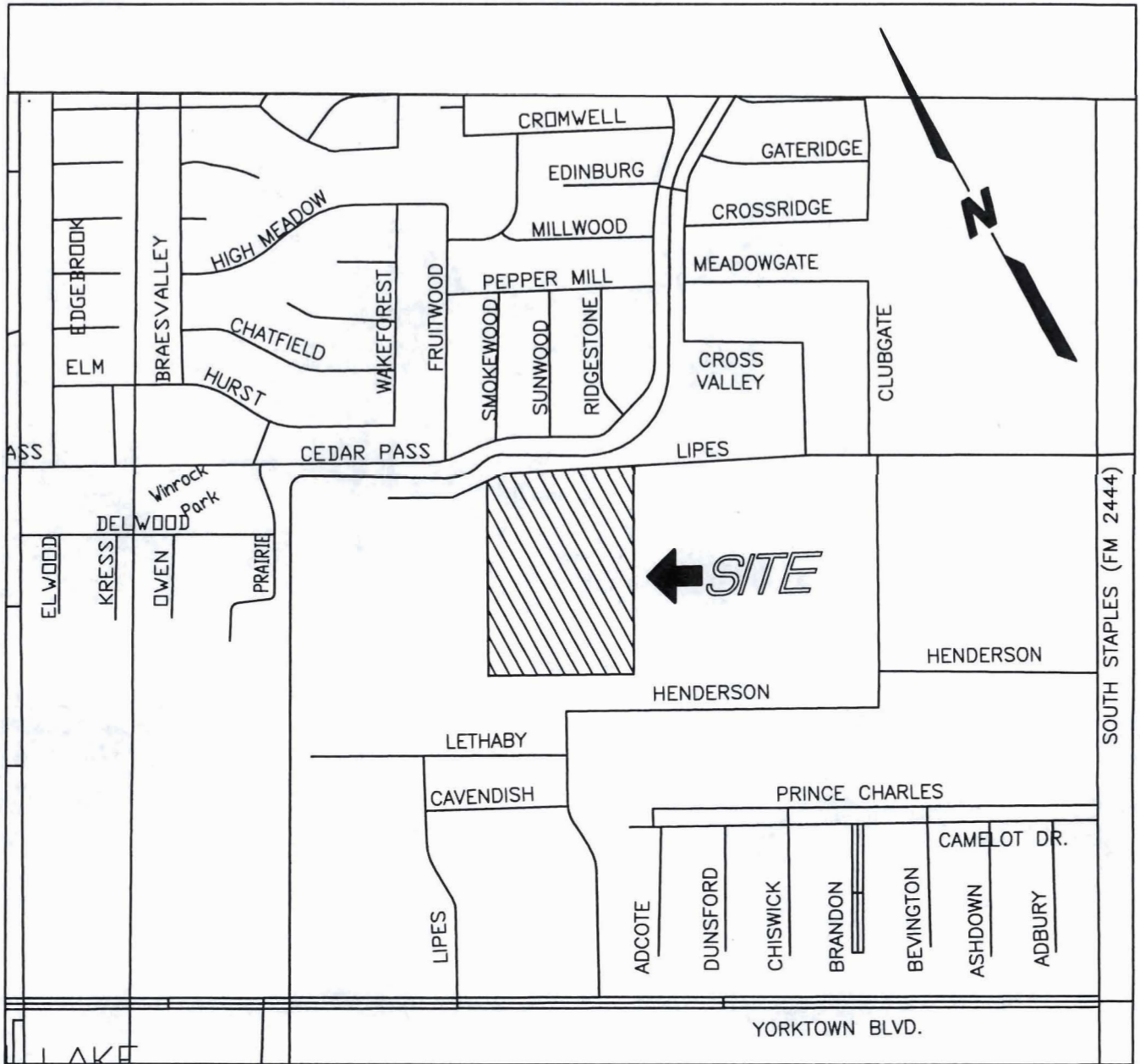


UTILITY EASEMENT CLOSURE

Prepared by:
Bass & Welsh Engineering
 3054 So. Alameda St.
 Corpus Christi, Tx. 78404
 (361) 882-5521 (phone)
 (361) 882-1265 (fax)

Job No: 07013
 Scale: 1"=100'
 Date: 07SEP2013
 Drawing No: UE CLOSURE
 Plotscale: 1=1
 Sheet 1 of 1

EXHIBIT "B"



LOCATION MAP

Prepared by:
Bass & Welsh Engineering
 3054 So. Alameda St.
 Corpus Christi, Tx. 78404
 (361) 882-5521 (phone)
 (361) 882-1265 (fax)

EXHIBIT B

Job No: 07013
 Scale: 1"=800'
 Date: 11SEP2013
 Drawing No: UE Location
 Plotscale: 1=1
 Sheet 1 of 1