



Zoning Case #1215-02 LWW Enterprises, LLC

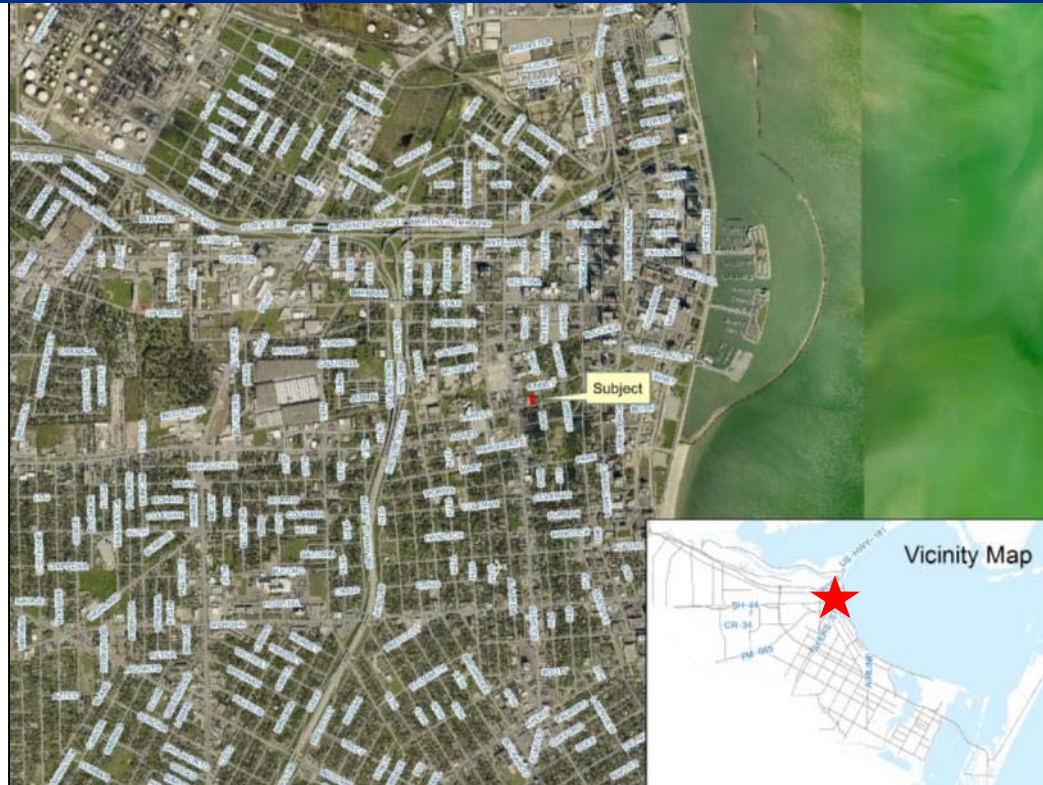
From: “RM-3” Multifamily 3 District

To: “CI” Intensive Commercial District

Planning Commission Presentation
December 16, 2015

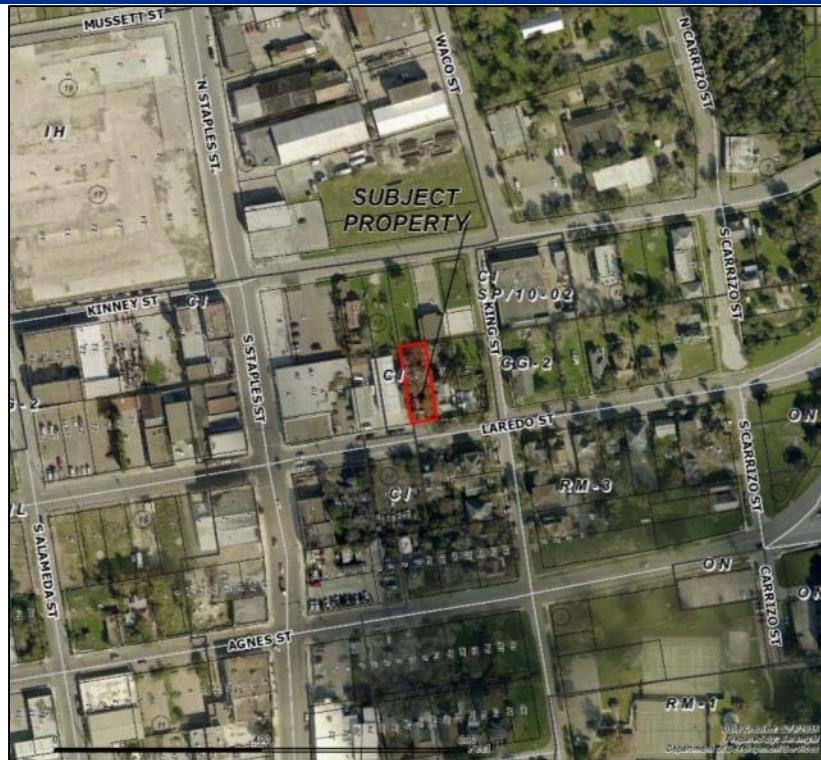


Aerial Overview





Aerial





Existing Land Use

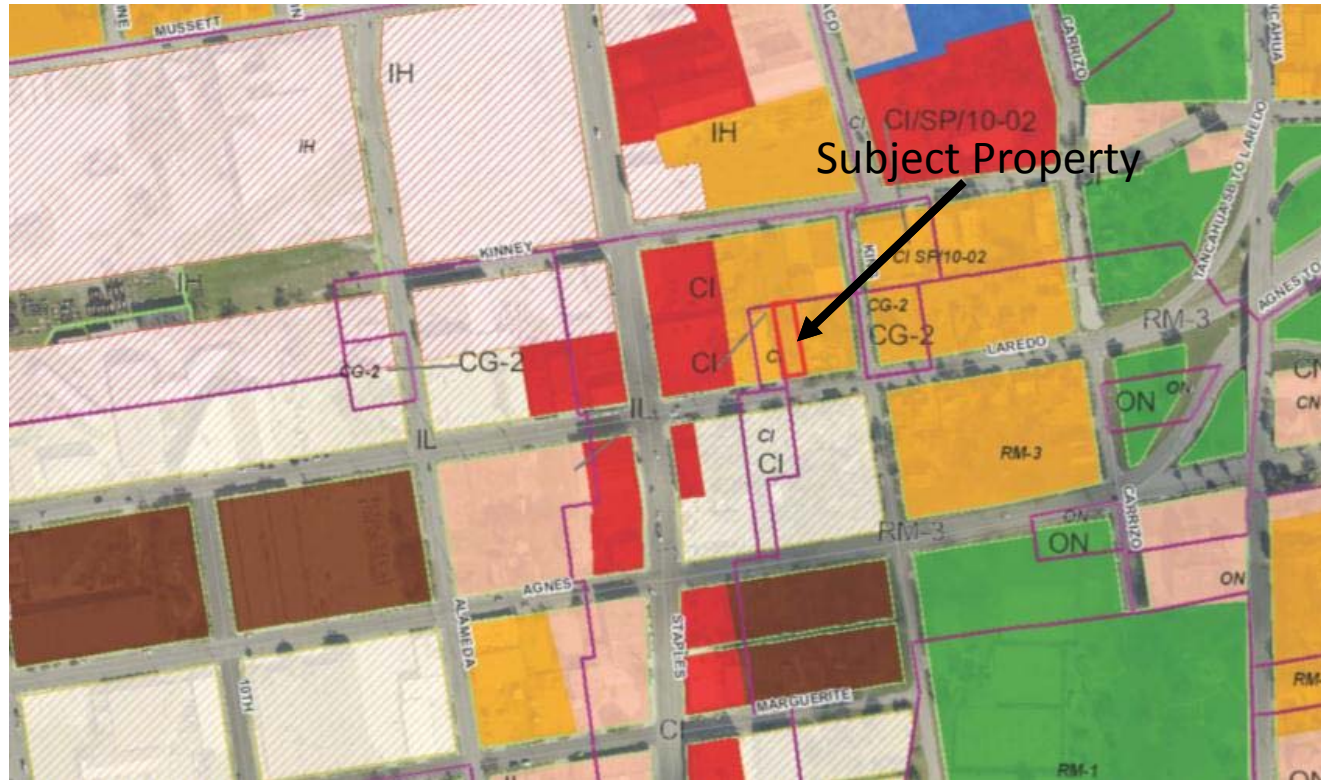


Future Land Use





Future Land Use Map





Subject Property





West on Laredo Street Toward Staples Street





East on Laredo Street Toward Tanchahua Street



Sub



Adjacent Property to the West Side of Subject Property



Sub



Across Laredo Street From Subject Property





Public Notification

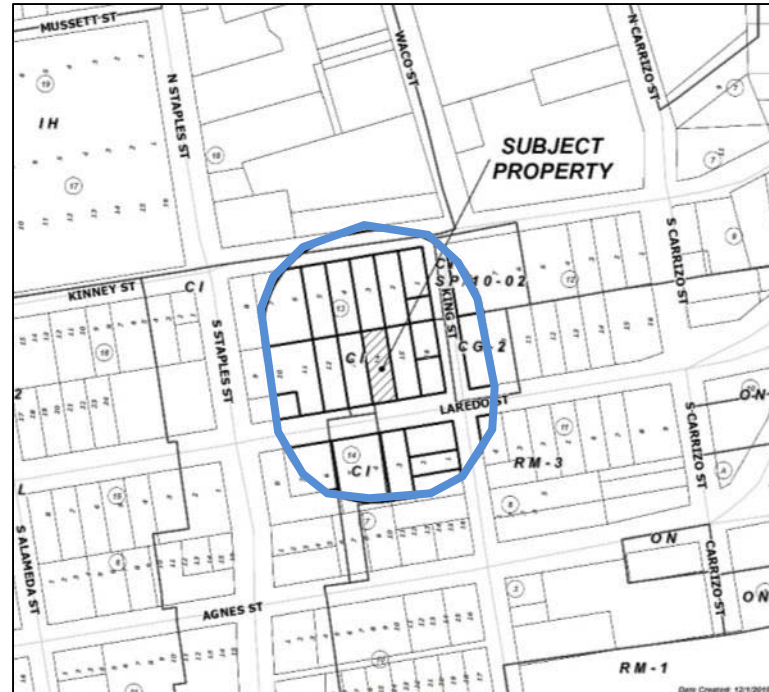
24 Notices mailed inside 200' buffer
3 Notices mailed outside 200' buffer

Notification Area

Opposed: 0 (0.00%)



In Favor: 0





Staff Recommendation

Approval of the **“CI” Intensive Commercial District**