

PROJECT NAME: TGH TWO
 PROJECT ID: TGH TWO
 COUNTY: NUECES
 CALCULATED BY: TT
 DATE: 12/7/2023

BASIN INFORMATION	
EXISTING BASIN SIZE	PROPOSED BASIN SIZE
175,983.00 SQFT 4.04 ACRES	175,983.00 SQFT 4.04 ACRES

BASIN ID: A

USE AND RELATED INFORMATION*	COEFFICIENT (SLOPE BASED)**			EXISTING		PROPOSED	
	<1%	1-3.5%	>3.5%	AREA	%	AREA	%
A. PASTURE	0.25	0.35	0.40		0.0%		0.0%
B. CULTIVATED FIELDS	0.30	0.40	0.50		0.0%		0.0%
C. LAWN	0.25	0.55	0.65		0.0%		0.0%
D. WOODED TRACTS	0.30	0.60	0.70	0.15	85.983	48.9%	0.0%
E. SINGLE FAMILY	0.15	0.18	0.25		0.0%		0.0%
F. MULTI-FAMILY DISTRICT	0.18	0.20	0.30		0.0%		0.0%
G. BUSINESS DISTRICTS	0.30	0.35	0.40		0.0%		0.0%
H. INDUSTRIAL DISTRICTS	0.30	0.40	0.50		0.0%		0.0%
I. OTHER	0.40	0.50	0.60	0.50	175,983	100.0%	0.0%

IN ACCORDANCE WITH THE CITY OF CORPUS CHRISTI ENGINEERING SERVICES INFRASTRUCTURE DESIGN MANUAL AND APPLICABLE ORDINANCES

Acres	Weighted C (C _w)
4.04	0.48
4.04	0.59

HYDRAULICS

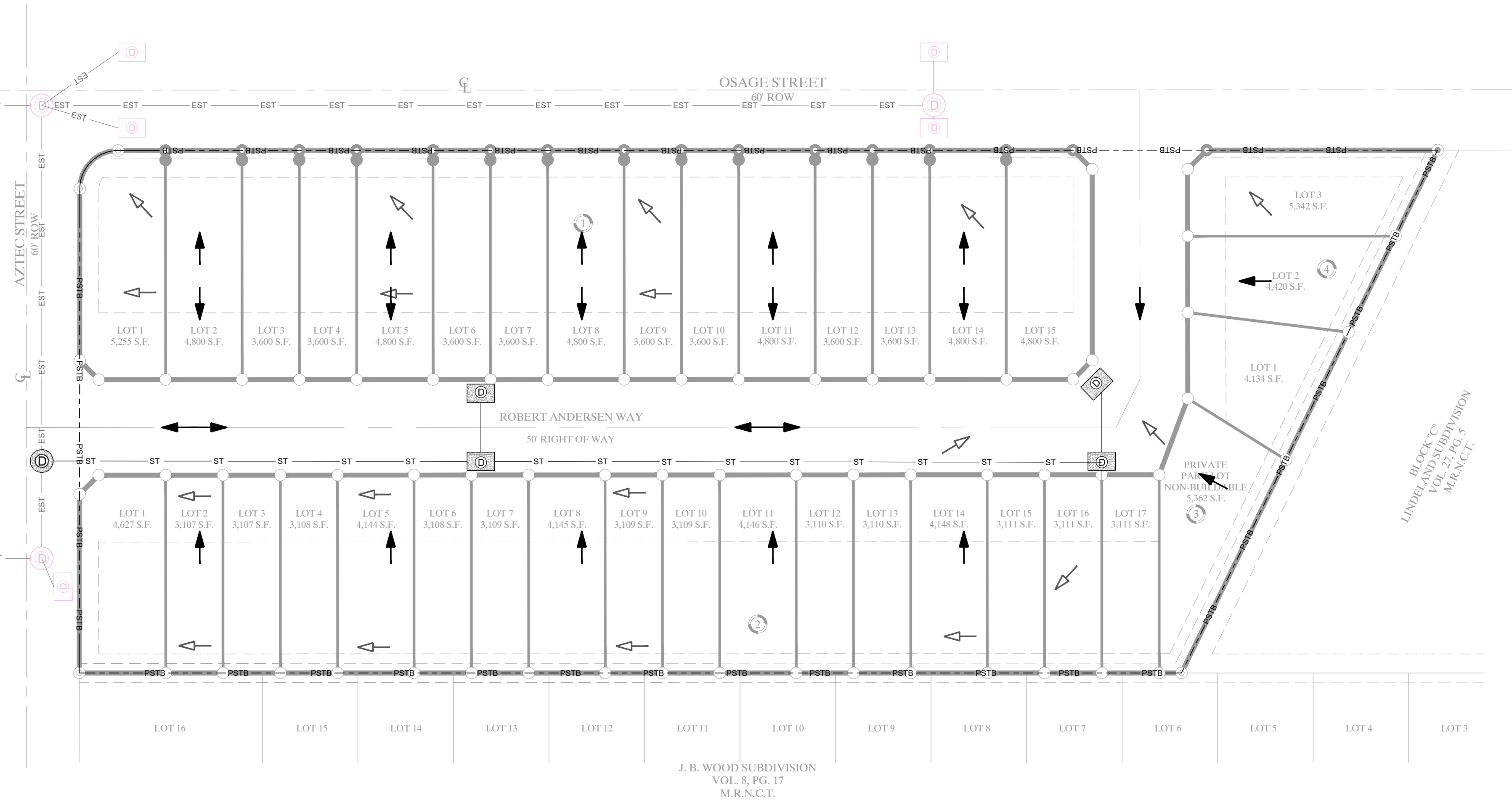
TIME OF CONCENTRATION (TOC)	
EXISTING TOC CALCULATIONS	PROPOSED TOC CALCULATIONS
USE	USE
A-F TOC: 30.00 48.9%	A-F TOC: 30.00 100.0%
G-H TOC: 15.00 0.0%	G-H TOC: 15.00 0.0%
I TOC: 30.00 51.1%	I TOC: 30.00 0.0%
AVG TOC: 30.00 100.0%	AVG TOC: 30.00 100.0%

DESIGN YEAR: 5

RATIONAL METHOD CALCULATIONS	
INTENSITY-DURATION-FREQUENCY (IDF) COEFFICIENTS**	DESIGN YEAR
e (in)	b
0.83	70.00
0.80	79.24
0.78	87.13
0.76	98.02
0.75	105.98
0.74	114.61

EXISTING INTENSITY (in/hr)	EXISTING Q (cfs)	PROPOSED INTENSITY (in/hr)	PROPOSED Q (cfs)	DELTA Q (cfs)
3.93	5.86	3.93	6.07	0.21
7.65	11.73	7.65	11.93	0.20
11.48	17.60	11.48	17.93	0.33
15.31	23.47	15.31	24.26	0.79
19.14	29.34	19.14	30.55	1.21
22.97	35.21	22.97	36.84	1.63

** BASED ON "NATIONAL OCEANIC AND ATMOSPHERIC ADMINISTRATION'S (NOAA) ATLAS 14 PRECIPITATION-FREQUENCY ATLAS OF THE UNITED STATES, VOLUME 11 VERSION 2.0 TEXAS" (PERCIA ET AL. 2018) FOR THE INDICATED COUNTY.



PLAT - FULL SIZE - 18 x 24
 MUNOZ ENGINEERING, LLC © 2023 (M:\Projects\Bridges\Surveying\1230000 - OSAGE EST\TES\230510 - TGH TWO Osage Estates - SWOMP - UTIL.dwg)

ENGINEER	THOMAS T. TIFIN, P.E.
SURVEYOR	RODOLFO BRISTER, RPS
OWNER	
OWNER PID	N/A
SURVEY PID	N/A
ENGR PID	N/A
DRWN BY	TH
CHKD BY	JAN
APPD BY	N/A
REV #	0
DATE	12/07/2023

Brister Surveying
 4455 South Padre Island Drive, Suite 51
 Corpus Christi, Texas 78411
 Office 361-850-1800
 Fax 361-850-1802
 bristerurveying@corpuswcb.com
 Firm Registration No. 10072800

MUNOZ ENGINEERING
 1808 S. BROWNLEE BOULEVARD
 CORPUS CHRISTI, TX 78404
 OFFICE: 361.946.4848
 TBPELS FIRM F-12240

ME
 MUNOZ ENGINEERING
 CIVIL | STRUCTURAL | MARINE | LAND DEVELOPMENT

PRELIMINARY STORMWATER QUALITY MANAGEMENT PLAN FOR THE PLAT OF
TGH TWO
 NUECES COUNTY, TEXAS