

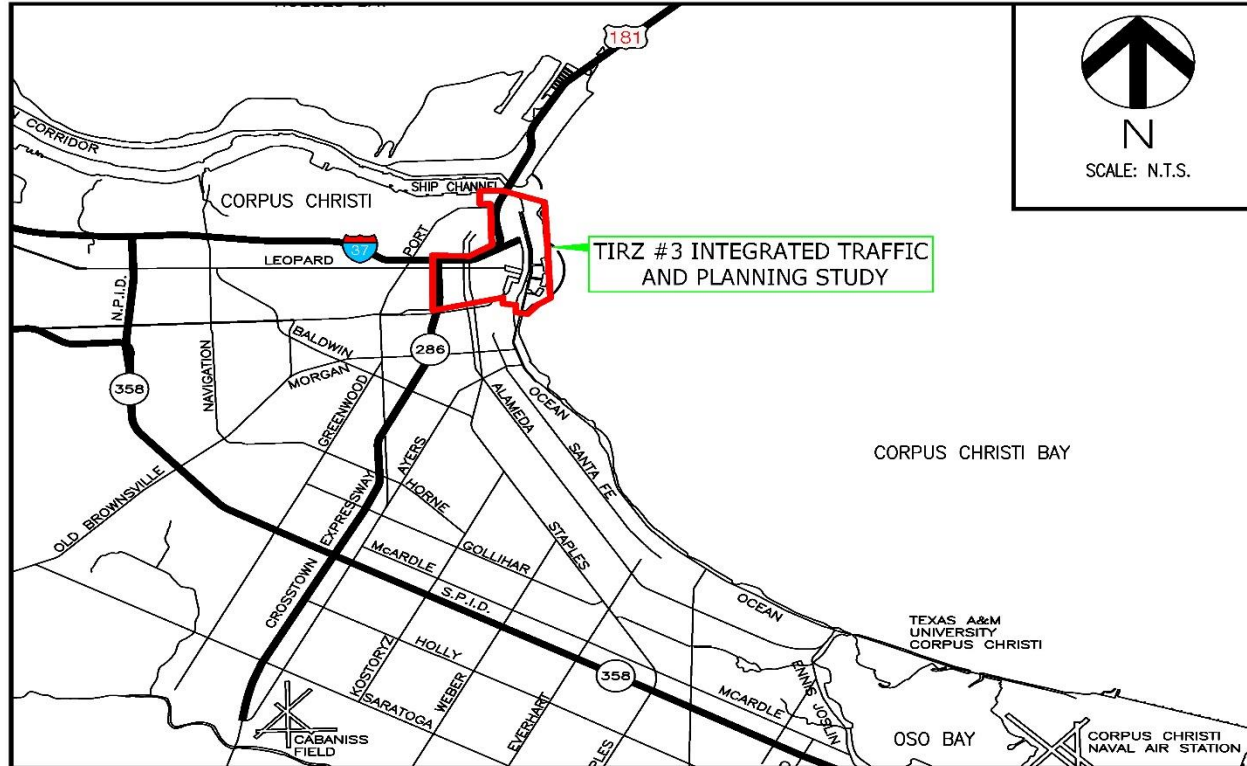
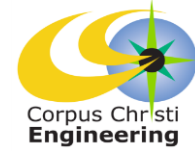
# TIRZ #3 Integrated Traffic and Planning Study



Council Presentation  
July 18, 2017

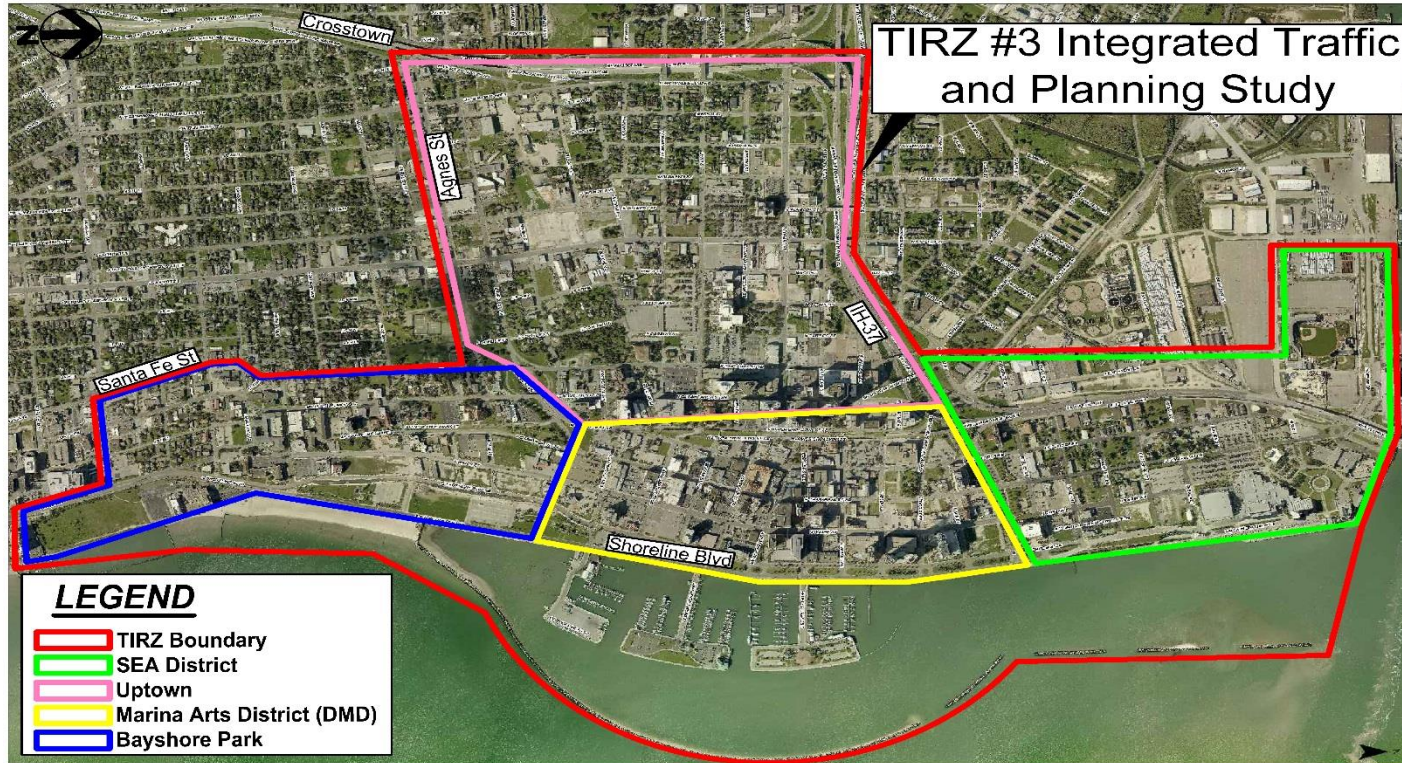
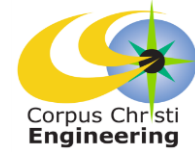


# Project Location



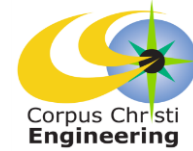


# Project Vicinity





# Project Scope

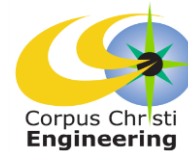


This Study Addresses Two Significant Issues:

- Chaparral Street and Shoreline Realignment projects (Bond 2008), altered traffic patterns and created access challenges for some businesses
- The Harbor Bridge replacement project resulted in a need to create connectivity to the new freeway



# Project Scope



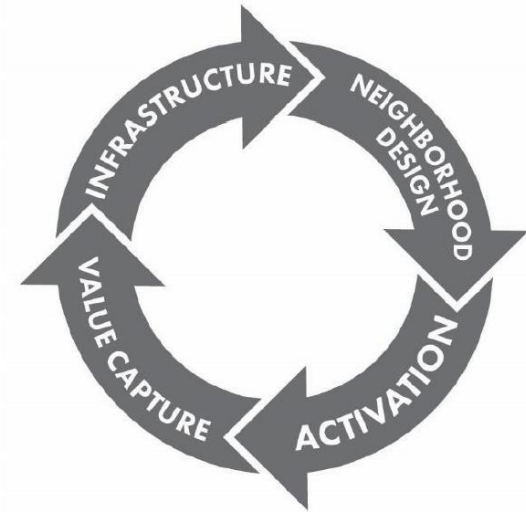
- This integrated Traffic and Planning Study will provide the following information:
  - Recommendations on immediate improvements that could be made to improve traffic flow
  - Recommendations for circulation patterns in the Marina Arts Districts and SEA District once the Harbor Bridge is relocated
  - Recommended changes to the existing mobility network, including a prioritized list of structural and operational critical improvements to existing roadway network.
  - Scenarios that maximize value
  - Implementation Program for CIP or Bond Projects



# A New Downtown Context

---

- Highway and infrastructure reinvention happening all over the country, including the Dallas CityMAP Initiative:
  - Aging highway corridors through urban downtowns facing significant adjacent infrastructure projects
  - Used planning to look at the urban design and economic impacts of transportation in Downtown
  - Surrounding neighborhood context also had direct impact and implications on project drivers moving forward







# Dallas CityMAP

