

# Water Restrictions and Lake Levels

## DROUGHT CONTINGENCY PLAN

Combined storage levels of  
Lake Corpus Christi and  
Choke Canyon Reservoir

**42.9%**

As of 01-20-2023

50% Water Restrictions lifted above 50%

40% Stage 1- Mild Water Shortage Watch

30% Stage 2- Moderate Water Shortage Watch

20% Stage 3- Critical Water Shortage

Historical combined storage  
levels of Lake Corpus  
Christi and Choke Canyon  
Reservoir

**43.3%**

**ONE MONTH AGO**

**52.8%**

**ONE YEAR AGO**

CORPUS CHRISTI WATER

WATER DATA DASHBOARD

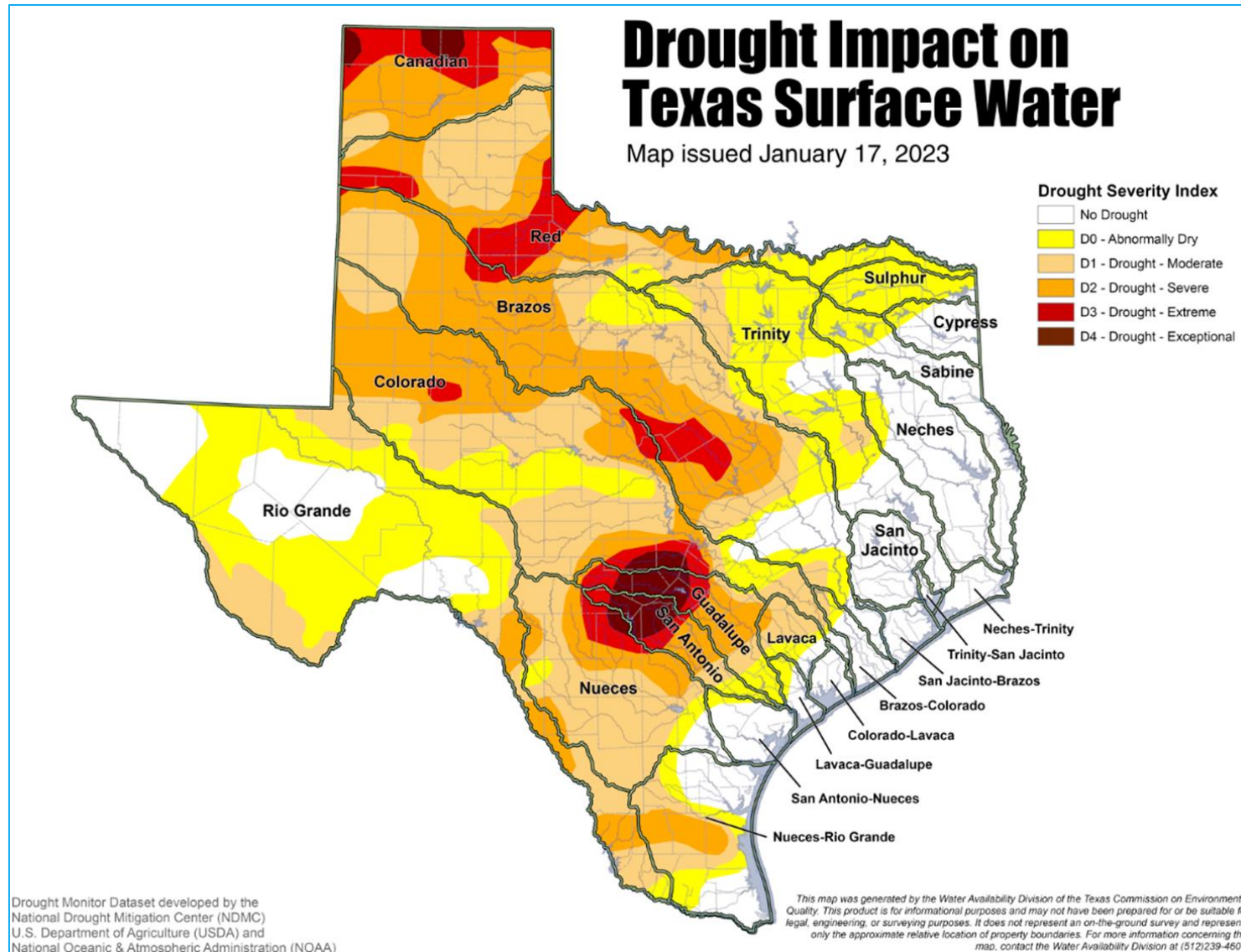
WATER RESTRICTIONS FAQs

HOW CAN I SAVE WATER?

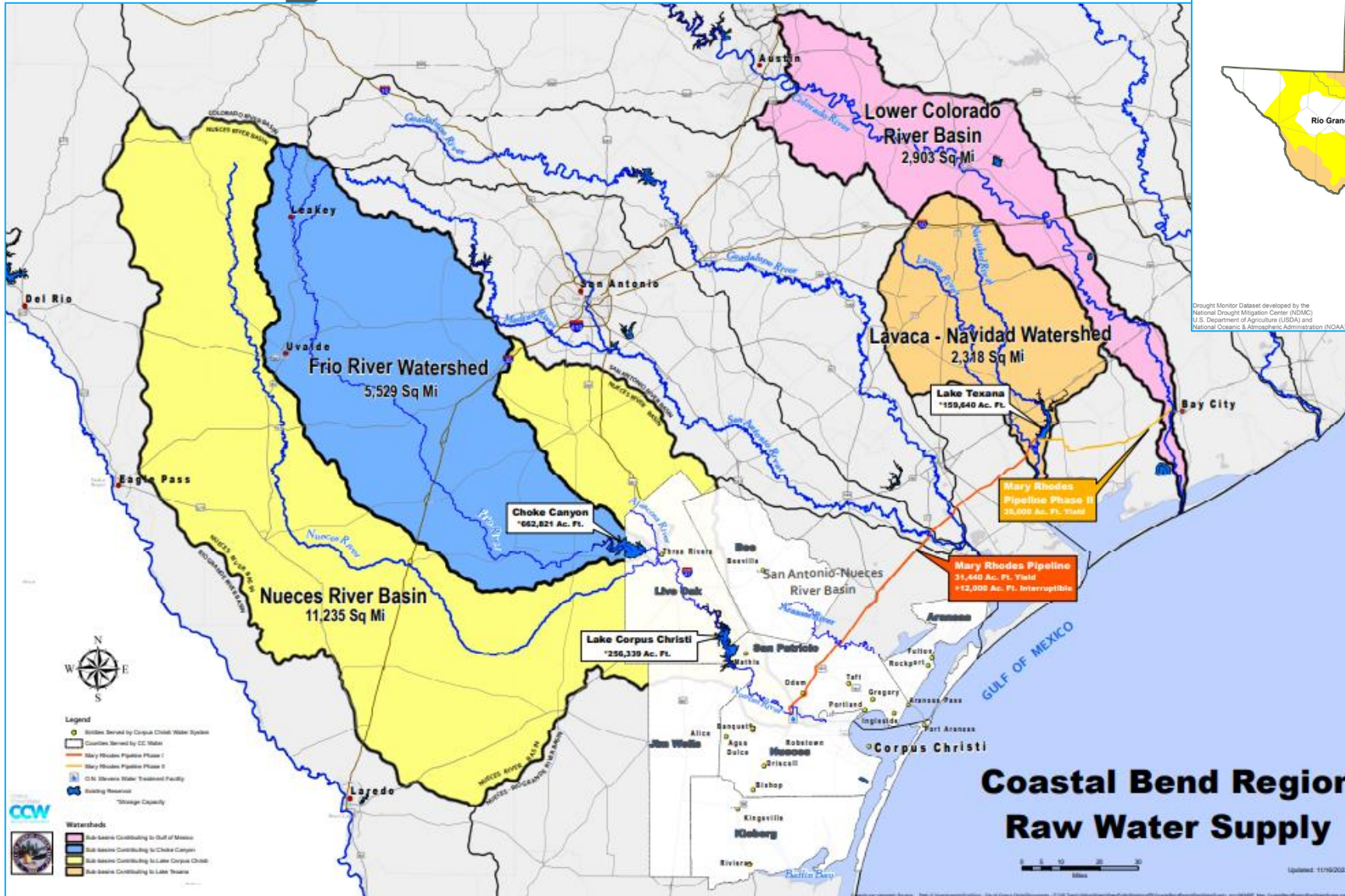
**CCW** Corpus Christi Water  
Serving the Coastal Bend

**The City of Corpus Christi is under Stage 1 Water Restrictions.**

# Ongoing Drought in Texas

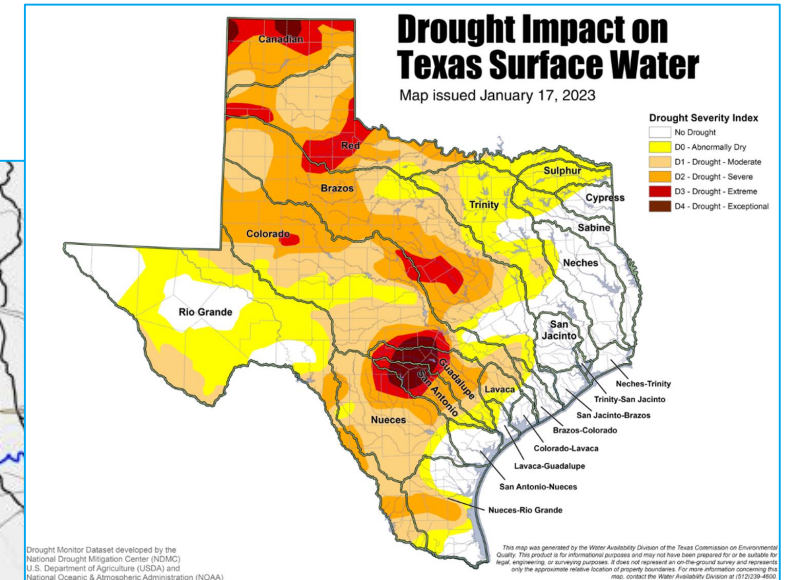


# Recharge Zones



Drought Monitor Dataset developed by the National Drought Mitigation Center (NDMC), U.S. Department of Agriculture (USDA), and National Oceanic & Atmospheric Administration (NOAA)

This map was generated by the Water Availability Division of the Texas Commission on Environmental Quality. This product is for informational purposes and may not have been prepared for or be suitable for legal, engineering, or surveying purposes. It does not represent an on-the-ground survey and represents only the approximate relative location of property boundaries. For more information concerning this map, contact the Water Availability Division at 817-239-4500.



# Upcoming Initiatives

- Drought Contingency Plan Revisions.
  - Proposed Administrative Changes and Restriction Updates.
- Water Conservation 365 Program.
  - Developed in October 2022.
  - Implementation in Progress.