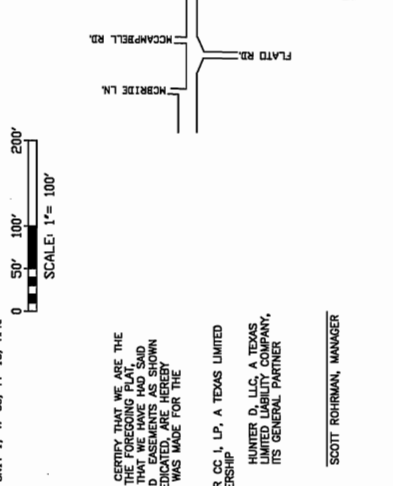
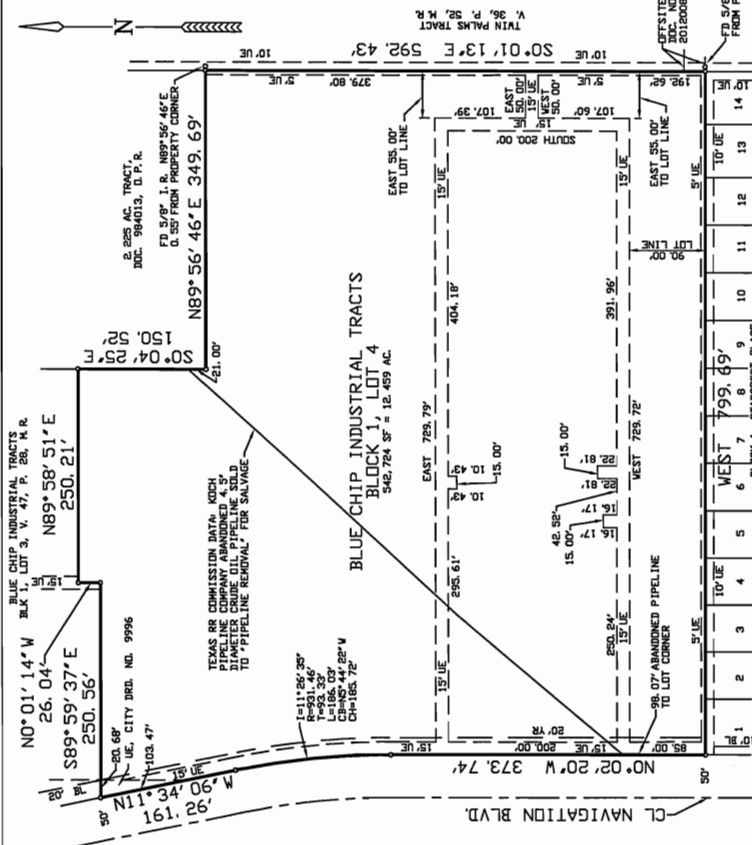


- NOTES:**
1. THE YARD REQUIREMENT, AS DESCRIBED, IS A REQUIREMENT OF THE (UDO) UNIFIED DEVELOPMENT CODE AND IS SUBJECT TO CHANGE AS THE ZONING MAY CHANGE.
 2. THE RECEIVING WATER FOR THE STORM WATER RUNOFF FROM THIS PROPERTY IS THE OSO CREEK. THE TCEQ HAS NOT CLASSIFIED THE AQUATIC LIFE USE FOR THE OSO CREEK, BUT IT IS RECOGNIZED AS AN IMPROVEDLY SENSITIVE AREA. THE OSO CREEK FLOWS DIRECTLY INTO THE OSO BAY AS "EXCEPTIONAL" AND "OXYSTER WATERS" AND CATEGORIZED THE RECEIVING WATER AS "CONTACT RECREATION" USE.
 3. THE SUBJECT SITE LIES IN FEMA ZONE "C" PURSUANT TO FEMA FLOOD INSURANCE RATE MAP COMPLETION, REVISION JULY 18, 1985, CHRISTI, NUECES COUNTY, TEXAS.
 4. SET 5/8" I.R.'S AT ALL CORNERS UNLESS OTHERWISE NOTED.
 5. THE BASIS OF BEARINGS IS THE NORTH BOUNDARY LINE OF STARCREST PLACE UNIT 1, V. 38, P. 13, M.R., WEST, AS SHOWN.
 6. IF ANY LOT IS DEVELOPED WITH RESIDENTIAL USES, COMPLIANCE WITH PUBLIC OPEN SPACE REGULATIONS WILL BE REQUIRED DURING THE BUILDING PERMIT PHASE.



**PLAT OF
BLUE CHIP INDUSTRIAL TRACTS,
BLOCK 1, LOT 4.**

A 12.459 ACRE TRACT OF LAND, MORE OR LESS, A PORTION OF J. C. RUSSELL FARM BLOCKS, BLOCK 11, A MAP OF WHICH IS RECORDED IN V. 28, P. 58 & 59, MAP RECORDS, NUECES CO., TX

CORPUS CHRISTI, NUECES COUNTY, TX

BASS & WELSH ENGINEERING
3054 S. ALAMEDA STREET
CORPUS CHRISTI, TEXAS 78404

DATE PLOTTED: 5/11/12
COMP. NO. PLAT-516
PLOT SCALE: 1" = 100'
SHEET 1 OF 1

STATE OF TEXAS \$
COUNTY OF NUECES \$

I, NIXON M. WELSH, REGISTERED PROFESSIONAL LAND SURVEYOR OF BASS & WELSH ENGINEERING, HEREBY CERTIFY THAT THE FOREGOING PLAT WAS PREPARED FROM A SURVEY MADE ON THE GROUND UNDER MY DIRECTION AND IS TRUE AND CORRECT.

THIS THE ____ DAY OF _____, 20____.

NIXON M. WELSH
REGISTERED PROFESSIONAL LAND SURVEYOR, TEXAS NUMBER 2211

STATE OF TEXAS \$
COUNTY OF _____ \$

WE, TEXAS CAPITAL BANK, N. A., HEREBY CERTIFY THAT WE ARE THE HOLDERS OF A LIEN ON THE LAND EMBRACED WITHIN THE BOUNDARIES OF THE FOREGOING MAP AND THAT WE HEREBY CONSENT TO THE SUBMISSION AND DEDICATION FOR THE PURPOSES AND CONSIDERATIONS THEREIN EXPRESSED.

BY: _____
TITLE: _____

STATE OF TEXAS \$
COUNTY OF _____ \$

THIS INSTRUMENT WAS ACKNOWLEDGED BEFORE ME BY _____
(NAME), _____ (TITLE) OF TEXAS CAPITAL BANK, N. A.

THIS THE ____ DAY OF _____, 20____.

NOTARY PUBLIC IN AND FOR THE STATE OF TEXAS

STATE OF TEXAS \$
COUNTY OF NUECES \$

THE FINAL PLAT OF THE HEREIN DESCRIBED PROPERTY WAS APPROVED BY THE DEPARTMENT OF DEVELOPMENT SERVICES OF THE CITY OF CORPUS CHRISTI, TEXAS.

STATE OF TEXAS \$
COUNTY OF NUECES \$

THE FINAL PLAT OF THE HEREIN DESCRIBED PROPERTY WAS APPROVED BY THE PLANNING COMMISSION ON BEHALF OF THE CITY OF CORPUS CHRISTI, TEXAS.

THIS THE ____ DAY OF _____, 20____.

CHAIRMAN
RUDY GARZA

DANIEL MCGINN, A.L.C.P.
SENIOR CITY PLANNER

STATE OF TEXAS \$
COUNTY OF NUECES \$

I, DIANA BARRERA, CLERK OF THE COUNTY COURT IN AND FOR SAID COUNTY, DO HEREBY CERTIFY THAT THE FOREGOING INSTRUMENT DATED THE ____ DAY OF _____, 20____ WITH ITS CERTIFICATE OF AUTHENTICATION, WAS FILED FOR RECORD IN MY OFFICE THE ____ DAY OF _____, 20____ AT _____ O'CLOCK ____ M., AT _____ O'CLOCK ____ M. IN THE MAP RECORDS OF SAID COUNTY IN VOLUME _____, PAGE _____, INSTRUMENT NUMBER _____.

WITNESS MY HAND AND SEAL OF THE COUNTY COURT IN AND FOR SAID COUNTY OF CORPUS CHRISTI, NUECES COUNTY, TEXAS, THE DAY AND YEAR LAST WRITTEN.

DIANA BARRERA, CLERK
COUNTY COURT, NUECES COUNTY, TEXAS

STATE OF TEXAS \$
COUNTY OF _____ \$

THIS INSTRUMENT WAS ACKNOWLEDGED BEFORE ME ON _____ DAY OF _____, 2012, BY _____ PARTNER, HUNTER CC 1, LP, A TEXAS LIMITED PARTNERSHIP, FOR AND ON BEHALF OF SAID PARTNERSHIP.

THIS THE ____ DAY OF _____, 20____.

NOTARY PUBLIC IN AND FOR THE STATE OF TEXAS

STATE OF TEXAS \$
COUNTY OF _____ \$

WE, HUNTER CC 1, LP, A TEXAS LIMITED PARTNERSHIP, HEREBY CERTIFY THAT WE ARE THE SUBJECT TO A LIEN IN FAVOR OF TEXAS CAPITAL BANK, N.A. THAT WE HAVE HAD SAID LAND SURVEYED AND SUBMITTED AS SHOWN, THAT STREETS AND EASEMENTS AS SHOWN HAVE BEEN HERETOFORE DEDICATED, OR IF NOT PREVIOUSLY DEDICATED, ARE HEREBY DEDICATED AND DEDICATED AND THAT THIS PLAT WAS MADE FOR THE PURPOSES OF DESCRIPTION AND DEDICATION.

HUNTER CC 1, LP, A TEXAS LIMITED PARTNERSHIP
BY: _____
HUNTER D, LLC, A TEXAS LIMITED LIABILITY COMPANY, ITS GENERAL PARTNER

BY: SCOTT ROHRMAN, MANAGER

STATE OF TEXAS \$
COUNTY OF _____ \$

THIS INSTRUMENT WAS ACKNOWLEDGED BEFORE ME ON _____ DAY OF _____, 2012, BY _____ PARTNER, HUNTER CC 1, LP, A TEXAS LIMITED PARTNERSHIP, FOR AND ON BEHALF OF SAID PARTNERSHIP.

THIS THE ____ DAY OF _____, 20____.

NOTARY PUBLIC IN AND FOR THE STATE OF TEXAS

APPLICATION FOR WATER LINE REIMBURSEMENT

We, Hunter CCI, LP, 3890 W. Northwest Highway, Suite 100, Dallas, Tx 75220, owner and developer of proposed Blue Chip Industrial Tracts, Block 1, Lot 4, hereby request reimbursement of \$80,887.47 for the installation of the water Grid main in conjunction with said lot, as provided for by City Ordinance No. 17092. \$80,887.47 is the construction cost, including 10% Engineering and Surveying, in excess of the acreage fee, as shown by the cost supporting documents attached herewith.

Scott Rohrman

Scott Rohrman
as Manager of the G.P.

5.30.12
(Date)

THE STATE OF TEXAS §

COUNTY OF Dallas §

This instrument was acknowledged before me on May 30, 2012, by Scott Rohrman (name), Manager (title), of Hunter CCI, LP, a Texas limited partnership, behalf of said partnership.



Tina McClary
Notary Public in and for the State of Texas

CERTIFICATION

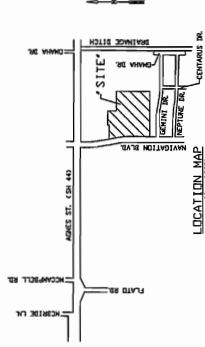
The information submitted with this application for reimbursement has been reviewed and determined to be correct. Reimbursement is subject to:

- (a) Sufficiency of funds in the Water Arterial and Grid Main Trust Fund, and
- (b) Appropriation and approval by the City Council.

Development Services Engineer

(Date)

IMPROVEMENTS TO BLUE CHIP INDUSTRIAL TRACTS, BLOCK 1, LOT 4 CORPUS CHRISTI, NUECES COUNTY, TX



LEGEND table with symbols and descriptions for various engineering elements like centerline, manholes, and pipes.

SHEET INDEX

- SHEET 1 COVER SHEET AND MISCELLANEOUS INFORMATION
SHEET 2 STORM SEWER, SANITARY SEWER AND WATER PLAN
SHEET 3 APPROVED CITY STORM WATER DETAILS AND ESTIMATE SUMMARY
SHEET 4 APPROVED CITY SANITARY SEWER STANDARD DETAILS
SHEET 5 APPROVED CITY WATER STANDARD DETAILS



CALL BEFORE YOU DIG! table with contact information for various utility companies like AT&T, TxDOT, and City of Corpus Christi.

NOTE: ALL UTILITIES SHALL BE MAINTAINED THROUGHOUT THE CONSTRUCTION PERIOD IN ACCORDANCE WITH THE CITY STANDARD SPECIFICATIONS FOR CONSTRUCTION OF UTILITIES AND THE CITY STANDARD SPECIFICATIONS FOR CONSTRUCTION OF STORM SEWERS AND SANITARY SEWERS.

BENCHMARK. CORNER MARK ON CONCRETE BASE OF METAL TRANSDUCER SHALL BE 3/4\"/>

CITY STANDARD SPECIFICATIONS

CONTRACTOR SHALL PROVIDE A SURETY BOND IN ACCORDANCE WITH THE CITY STANDARD SPECIFICATIONS FOR CONSTRUCTION OF UTILITIES AND THE CITY STANDARD SPECIFICATIONS FOR CONSTRUCTION OF STORM SEWERS AND SANITARY SEWERS.

- 01100 GENERAL NOTES
01200 MATERIALS
01300 CONSTRUCTION METHODS
01400 CONSTRUCTION METHODS
01500 CONSTRUCTION METHODS
01600 CONSTRUCTION METHODS
01700 CONSTRUCTION METHODS
01800 CONSTRUCTION METHODS
01900 CONSTRUCTION METHODS
02000 CONSTRUCTION METHODS
02100 CONSTRUCTION METHODS
02200 CONSTRUCTION METHODS
02300 CONSTRUCTION METHODS
02400 CONSTRUCTION METHODS
02500 CONSTRUCTION METHODS

GENERAL AND GENERAL NOTES

- 1. CONSTRUCTION SHALL BE IN ACCORDANCE WITH THE CITY STANDARD SPECIFICATIONS FOR CONSTRUCTION OF UTILITIES AND THE CITY STANDARD SPECIFICATIONS FOR CONSTRUCTION OF STORM SEWERS AND SANITARY SEWERS.
2. ALL UTILITIES SHALL BE MAINTAINED THROUGHOUT THE CONSTRUCTION PERIOD.
3. ALL UTILITIES SHALL BE MAINTAINED THROUGHOUT THE CONSTRUCTION PERIOD.
4. ALL UTILITIES SHALL BE MAINTAINED THROUGHOUT THE CONSTRUCTION PERIOD.
5. ALL UTILITIES SHALL BE MAINTAINED THROUGHOUT THE CONSTRUCTION PERIOD.
6. ALL UTILITIES SHALL BE MAINTAINED THROUGHOUT THE CONSTRUCTION PERIOD.

TRAFFIC CONTROL DURING CONSTRUCTION

CONTRACTOR SHALL PROVIDE A TRAFFIC CONTROL AND MAINTENANCE PLAN AND SUBMIT IT TO THE CITY ENGINEER FOR APPROVAL. THE TRAFFIC CONTROL AND MAINTENANCE PLAN SHALL BE ACCORDANCE WITH THE CITY STANDARD SPECIFICATIONS FOR CONSTRUCTION OF UTILITIES AND THE CITY STANDARD SPECIFICATIONS FOR CONSTRUCTION OF STORM SEWERS AND SANITARY SEWERS.

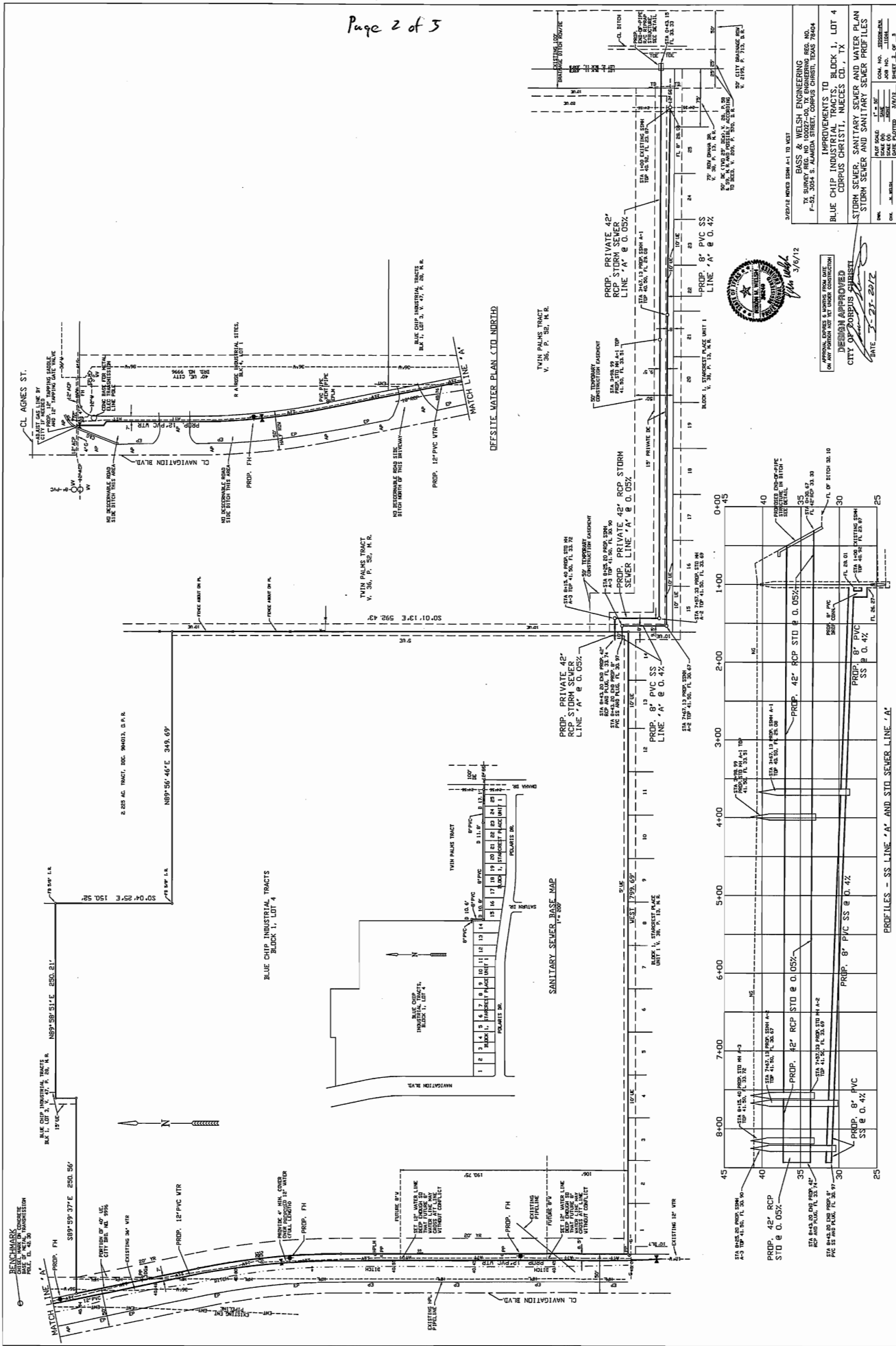
CONTRACTOR SHALL PROVIDE A TRAFFIC CONTROL AND MAINTENANCE PLAN AND SUBMIT IT TO THE CITY ENGINEER FOR APPROVAL. THE TRAFFIC CONTROL AND MAINTENANCE PLAN SHALL BE ACCORDANCE WITH THE CITY STANDARD SPECIFICATIONS FOR CONSTRUCTION OF UTILITIES AND THE CITY STANDARD SPECIFICATIONS FOR CONSTRUCTION OF STORM SEWERS AND SANITARY SEWERS.

BASS AND WELSH ENGINEERING TX REGISTRATION NO. F-52, 3054 S. ALAMEDA STREET CORPUS CHRISTI, TEXAS 78404

DESIGN APPROVED BY: [Signature] DATE: 3/23-2012

COVER SHEET AND MISCELLANEOUS INFORMATION

DATE: 3-23-2012



3/20/12 REVISED FROM A-1 TO B03
 BASS & WELSH ENGINEERING
 TEXAS SURVEYING AND ENGINEERING, INC. NO. 10027-00
 P-50, 3054 S. ALAMEDA STREET, CINCINNATI, TEXAS 78004
 IMPROVEMENTS TO BLOCK 1, LOT 4
 BLUE CHIP INDUSTRIAL TRACTS
 CURRIS CHRISTI, NECCS CO., TX
 STORM SEWER, SANITARY SEWER, WATER PLAN
 STORM SEWER AND SANITARY SEWER PROFILES

PROFILES - SS LINE 'A' AND STD. SEWER LINE 'A'

Station	Profile 1 (SS)	Profile 2 (RCP)	Profile 3 (PVC)
8+00	30.00	30.00	30.00
7+00	30.00	30.00	30.00
6+00	30.00	30.00	30.00
5+00	30.00	30.00	30.00
4+00	30.00	30.00	30.00
3+00	30.00	30.00	30.00
2+00	30.00	30.00	30.00
1+00	30.00	30.00	30.00
0+00	30.00	30.00	30.00

DESIGN APPROVED
 CITY OF CURRIS CHRISTI
 DATE 3-27-2012

STANDARD STORM WATER
REPAIR/PAVING RING & COVER

SECTION 1

STANDARD STORM WATER
REPAIR/PAVING RING & COVER

SECTION 2

STANDARD STORM WATER
REPAIR/PAVING RING & COVER

SECTION 3

STANDARD STORM WATER
REPAIR/PAVING RING & COVER

SECTION 4

STANDARD STORM WATER
REPAIR/PAVING RING & COVER

SECTION 5

STANDARD STORM WATER
REPAIR/PAVING RING & COVER

SECTION 6

STANDARD STORM WATER
REPAIR/PAVING RING & COVER

SECTION 7

STANDARD STORM WATER
REPAIR/PAVING RING & COVER

SECTION 8

STANDARD STORM WATER
REPAIR/PAVING RING & COVER

SECTION 9

STANDARD STORM WATER
REPAIR/PAVING RING & COVER

SECTION 10

STANDARD STORM WATER
REPAIR/PAVING RING & COVER

SECTION 11

STANDARD STORM WATER
REPAIR/PAVING RING & COVER

SECTION 12

STANDARD STORM WATER
REPAIR/PAVING RING & COVER

SECTION 13

STANDARD STORM WATER
REPAIR/PAVING RING & COVER

SECTION 14

STANDARD STORM WATER
REPAIR/PAVING RING & COVER

SECTION 15

STANDARD STORM WATER
REPAIR/PAVING RING & COVER

SECTION 16

STANDARD STORM WATER
REPAIR/PAVING RING & COVER

SECTION 17

STANDARD STORM WATER
REPAIR/PAVING RING & COVER

SECTION 18

STANDARD STORM WATER
REPAIR/PAVING RING & COVER

SECTION 19

STANDARD STORM WATER
REPAIR/PAVING RING & COVER

SECTION 20

STANDARD STORM WATER
REPAIR/PAVING RING & COVER

SECTION 21

EXISTING SIDE OF DITCH
SIDE SLOPE WIRES

PROPOSED 1/2" DITCH LINING 4"
THICK WITH 2" ASPHALT PARALLEL
TO TOP OF DITCH. MINIMUM 6" PE PIPE OD.
PLUS .30" (MINIMUM)

SET THIS DIMENSION SUCH THAT CONC.
LINING EXTENDS TO WITHIN 1" OF DITCH
SIDE. MINIMUM 2" UNDER WALK IN
DITCH, WHICHEVER IS LOWER (MIN. 1.5")

FL SEE PLAN

CONCRETE
DITCH BOTTOM

NOTE: REINFORCE ALL DITCH LINING WITH 6"
MESH OR EQUIVALENT IN CONCRETE. BEND TO CONFORM.

TYPICAL SECTION - PROPOSED
CONCRETE LINING IN DITCH AT END OF
PROPOSED STO. PIPE

N/S

WATER IMPROVEMENTS	
1 12" PVC PIPE	12%
2 12" GATE VALVE W/BOX	2 EA
3 12" CL. ANY ANGLE	2 EA
4 12" TEE	4 EA
5 12" TAPPING SOURCE WITH FLANGING GASKET, NUT & WASHER	1 EA
6 FIRE RESISTANT WALK	4 EA
7 6" GATE VALVE W/BOX	4 EA
8 6" CL. ANY ANGLE	4 EA
9 6" DIA. X 20' PVC PIPE	12 EA
10 1/2" PVC CONDUIT, A/BI/COATING	12 EA
11 1/2" PVC CONDUIT, A/BI/COATING	12 EA
12 1/2" PVC CONDUIT, A/BI/COATING	12 EA
13 1/2" PVC CONDUIT, A/BI/COATING	12 EA
14 1/2" PVC CONDUIT, A/BI/COATING	12 EA
15 1/2" PVC CONDUIT, A/BI/COATING	12 EA
16 1/2" PVC CONDUIT, A/BI/COATING	12 EA
17 1/2" PVC CONDUIT, A/BI/COATING	12 EA
18 1/2" PVC CONDUIT, A/BI/COATING	12 EA
19 1/2" PVC CONDUIT, A/BI/COATING	12 EA
20 1/2" PVC CONDUIT, A/BI/COATING	12 EA

STORM SEWER IMPROVEMENTS	
1 12" RCP	7%
2 12" MANHOLE	3 EA
3 12" RCP STRUCTURE AT PIPE END IN DITCH	1 EA
4 12" RCP END	1 EA
5 ASSOCIATED V/IN STORM SEWER	1 EA
6 TRENCH SAFETY FOR STORM SEWER	7%
7 7' ST. ANY ANGLE	1 EA
8 7' ST. ANY ANGLE	1 EA
9 7' ST. ANY ANGLE	1 EA
10 7' ST. ANY ANGLE	1 EA
11 7' ST. ANY ANGLE	1 EA
12 7' ST. ANY ANGLE	1 EA
13 7' ST. ANY ANGLE	1 EA
14 7' ST. ANY ANGLE	1 EA
15 7' ST. ANY ANGLE	1 EA
16 7' ST. ANY ANGLE	1 EA
17 7' ST. ANY ANGLE	1 EA
18 7' ST. ANY ANGLE	1 EA
19 7' ST. ANY ANGLE	1 EA
20 7' ST. ANY ANGLE	1 EA

SAWTOOTH SEWER IMPROVEMENTS	
1 10" PVC PIPE	737 LF
2 10" PVC PIPE SHIP CONNECTION	1 EA
3 MANHOLE, FS	3 EA
4 PLUG AT PIPE END	1 EA
5 CLEANOUT AND SURROUNDING SEE DETAIL	1 EA
6 TRENCH SAFETY FOR SAWTOOTH SEWER	737 LF

APPROVAL OFFICES & DATES FOR DATE
ON ANY POSITION NOT YET UNDER CONSTRUCTION

DESIGN APPROVED

CITY OF TORPUS CHRISTI

[Signature]

DATE: 3/8/12

BASS AND WELSH ENGINEERING
TX REGISTERED PROFESSIONAL ENGINEER
CORPUS CHRISTI, TEXAS 78401

IMPROVEMENTS TO
BLUE CHIP INDUSTRIAL TRACTS, BLK 1, LOT 4
CORPUS CHRISTI, NECCES CD., TX
APPROVED CITY STORM WATER DETAILS &
CONCRETE DETAILS

PROJECT NO. 12-000000-0000
SHEET NO. 3 OF 3
DATE PLOTTED: 3/8/12

NEW FIBERGLASS MANHOLE CONSTRUCTION:

1. MANHOLE SHALL BE CONSTRUCTED IN ACCORDANCE WITH THE CITY OF HOUSTON STANDARD SPECIFICATIONS FOR SANITARY SEWER MANHOLES.
2. MANHOLE SHALL BE CONSTRUCTED WITH A MINIMUM WALL THICKNESS OF 1.5" (38mm).
3. MANHOLE SHALL BE CONSTRUCTED WITH A MINIMUM RING RIGIDITY OF 100,000 LB-FOOT/INCH (13,725 N-M/CM).
4. MANHOLE SHALL BE CONSTRUCTED WITH A MINIMUM STRENGTH OF 10,000 LB/INCH (141,421 N/CM).
5. MANHOLE SHALL BE CONSTRUCTED WITH A MINIMUM STRENGTH OF 10,000 LB/INCH (141,421 N/CM).
6. MANHOLE SHALL BE CONSTRUCTED WITH A MINIMUM STRENGTH OF 10,000 LB/INCH (141,421 N/CM).
7. MANHOLE SHALL BE CONSTRUCTED WITH A MINIMUM STRENGTH OF 10,000 LB/INCH (141,421 N/CM).
8. MANHOLE SHALL BE CONSTRUCTED WITH A MINIMUM STRENGTH OF 10,000 LB/INCH (141,421 N/CM).
9. MANHOLE SHALL BE CONSTRUCTED WITH A MINIMUM STRENGTH OF 10,000 LB/INCH (141,421 N/CM).
10. MANHOLE SHALL BE CONSTRUCTED WITH A MINIMUM STRENGTH OF 10,000 LB/INCH (141,421 N/CM).

REHABILITATION EXISTING MANHOLE:

GENERAL NOTES:
1. REHABILITATION SHALL BE CONSTRUCTED IN ACCORDANCE WITH THE CITY OF HOUSTON STANDARD SPECIFICATIONS FOR SANITARY SEWER MANHOLES.
2. REHABILITATION SHALL BE CONSTRUCTED WITH A MINIMUM WALL THICKNESS OF 1.5" (38mm).
3. REHABILITATION SHALL BE CONSTRUCTED WITH A MINIMUM RING RIGIDITY OF 100,000 LB-FOOT/INCH (13,725 N-M/CM).
4. REHABILITATION SHALL BE CONSTRUCTED WITH A MINIMUM STRENGTH OF 10,000 LB/INCH (141,421 N/CM).
5. REHABILITATION SHALL BE CONSTRUCTED WITH A MINIMUM STRENGTH OF 10,000 LB/INCH (141,421 N/CM).
6. REHABILITATION SHALL BE CONSTRUCTED WITH A MINIMUM STRENGTH OF 10,000 LB/INCH (141,421 N/CM).
7. REHABILITATION SHALL BE CONSTRUCTED WITH A MINIMUM STRENGTH OF 10,000 LB/INCH (141,421 N/CM).
8. REHABILITATION SHALL BE CONSTRUCTED WITH A MINIMUM STRENGTH OF 10,000 LB/INCH (141,421 N/CM).
9. REHABILITATION SHALL BE CONSTRUCTED WITH A MINIMUM STRENGTH OF 10,000 LB/INCH (141,421 N/CM).
10. REHABILITATION SHALL BE CONSTRUCTED WITH A MINIMUM STRENGTH OF 10,000 LB/INCH (141,421 N/CM).

TRENCH BACKFILL AND PAVEMENT REPAIR FOR WATER LINES:

GENERAL NOTES:
1. TRENCH BACKFILL SHALL BE CONSTRUCTED IN ACCORDANCE WITH THE CITY OF HOUSTON STANDARD SPECIFICATIONS FOR SANITARY SEWER MANHOLES.
2. TRENCH BACKFILL SHALL BE CONSTRUCTED WITH A MINIMUM WALL THICKNESS OF 1.5" (38mm).
3. TRENCH BACKFILL SHALL BE CONSTRUCTED WITH A MINIMUM RING RIGIDITY OF 100,000 LB-FOOT/INCH (13,725 N-M/CM).
4. TRENCH BACKFILL SHALL BE CONSTRUCTED WITH A MINIMUM STRENGTH OF 10,000 LB/INCH (141,421 N/CM).
5. TRENCH BACKFILL SHALL BE CONSTRUCTED WITH A MINIMUM STRENGTH OF 10,000 LB/INCH (141,421 N/CM).
6. TRENCH BACKFILL SHALL BE CONSTRUCTED WITH A MINIMUM STRENGTH OF 10,000 LB/INCH (141,421 N/CM).
7. TRENCH BACKFILL SHALL BE CONSTRUCTED WITH A MINIMUM STRENGTH OF 10,000 LB/INCH (141,421 N/CM).
8. TRENCH BACKFILL SHALL BE CONSTRUCTED WITH A MINIMUM STRENGTH OF 10,000 LB/INCH (141,421 N/CM).
9. TRENCH BACKFILL SHALL BE CONSTRUCTED WITH A MINIMUM STRENGTH OF 10,000 LB/INCH (141,421 N/CM).
10. TRENCH BACKFILL SHALL BE CONSTRUCTED WITH A MINIMUM STRENGTH OF 10,000 LB/INCH (141,421 N/CM).

BASS AND WELSH ENGINEERING
TX REGISTRATION NO. F-52, 2054 S. ALAMEDA STREET
CORPUS CHRISTI, TEXAS 78404

CORPUS CHRISTI
BLUE CHIP INDUSTRIAL TRACTS
CORPUS CHRISTI, NUECES CO., TX 78414

APPROVED CITY SANITARY SEWER STANDARD DETAILS

DATE: 1-27-2017

CHK: N. WELSH
DESIGNED BY: J. WELSH
DRAWN BY: J. WELSH
SCALE: AS SHOWN

DESIGN APPROVED
CITY OF CORPUS CHRISTI

DATE: 1-27-2017

MANHOLE SURFACE PROTECTION AND AIR RELEASE VALVE DETAILS

GENERAL NOTES:
1. MANHOLE SURFACE SHALL BE CONSTRUCTED IN ACCORDANCE WITH THE CITY OF HOUSTON STANDARD SPECIFICATIONS FOR SANITARY SEWER MANHOLES.
2. MANHOLE SURFACE SHALL BE CONSTRUCTED WITH A MINIMUM WALL THICKNESS OF 1.5" (38mm).
3. MANHOLE SURFACE SHALL BE CONSTRUCTED WITH A MINIMUM RING RIGIDITY OF 100,000 LB-FOOT/INCH (13,725 N-M/CM).
4. MANHOLE SURFACE SHALL BE CONSTRUCTED WITH A MINIMUM STRENGTH OF 10,000 LB/INCH (141,421 N/CM).
5. MANHOLE SURFACE SHALL BE CONSTRUCTED WITH A MINIMUM STRENGTH OF 10,000 LB/INCH (141,421 N/CM).
6. MANHOLE SURFACE SHALL BE CONSTRUCTED WITH A MINIMUM STRENGTH OF 10,000 LB/INCH (141,421 N/CM).
7. MANHOLE SURFACE SHALL BE CONSTRUCTED WITH A MINIMUM STRENGTH OF 10,000 LB/INCH (141,421 N/CM).
8. MANHOLE SURFACE SHALL BE CONSTRUCTED WITH A MINIMUM STRENGTH OF 10,000 LB/INCH (141,421 N/CM).
9. MANHOLE SURFACE SHALL BE CONSTRUCTED WITH A MINIMUM STRENGTH OF 10,000 LB/INCH (141,421 N/CM).
10. MANHOLE SURFACE SHALL BE CONSTRUCTED WITH A MINIMUM STRENGTH OF 10,000 LB/INCH (141,421 N/CM).

STANDARD WATER DETAILS

STANDARD WATER DETAILS

STANDARD WATER DETAILS

STANDARD WATER DETAILS

STANDARD WATER DETAILS

STANDARD WATER DETAILS

GENERAL NOTES

1. ALL WORK SHALL BE IN ACCORDANCE WITH THE CITY OF CORPUS CHRISTI SPECIFICATIONS FOR STANDARD WATER DETAILS.
2. THE CONTRACTOR SHALL BE RESPONSIBLE FOR OBTAINING ALL NECESSARY PERMITS AND APPROVALS FROM THE CITY OF CORPUS CHRISTI.
3. ALL MATERIALS SHALL BE OF THE BEST QUALITY AVAILABLE AND SHALL BE SUBJECT TO INSPECTION AND TESTING BY THE CITY OF CORPUS CHRISTI.
4. THE CONTRACTOR SHALL MAINTAIN ACCESS TO ALL ADJACENT PROPERTIES AT ALL TIMES.
5. ALL WORK SHALL BE COMPLETED WITHIN THE SPECIFIED TIME FRAME.
6. THE CONTRACTOR SHALL BE RESPONSIBLE FOR PROTECTING ALL EXISTING UTILITIES AND STRUCTURES.
7. ALL WORK SHALL BE COMPLETED TO THE SATISFACTION OF THE CITY OF CORPUS CHRISTI.
8. THE CONTRACTOR SHALL MAINTAIN A NEAT AND ORDERLY WORK AREA AT ALL TIMES.
9. ALL MATERIALS SHALL BE STORED PROPERLY AND PROTECTED FROM WEATHER.
10. THE CONTRACTOR SHALL BE RESPONSIBLE FOR OBTAINING ALL NECESSARY APPROVALS FROM THE CITY OF CORPUS CHRISTI.
11. ALL WORK SHALL BE COMPLETED WITHIN THE SPECIFIED TIME FRAME.
12. THE CONTRACTOR SHALL BE RESPONSIBLE FOR PROTECTING ALL EXISTING UTILITIES AND STRUCTURES.
13. ALL WORK SHALL BE COMPLETED TO THE SATISFACTION OF THE CITY OF CORPUS CHRISTI.
14. THE CONTRACTOR SHALL MAINTAIN A NEAT AND ORDERLY WORK AREA AT ALL TIMES.
15. ALL MATERIALS SHALL BE STORED PROPERLY AND PROTECTED FROM WEATHER.
16. THE CONTRACTOR SHALL BE RESPONSIBLE FOR OBTAINING ALL NECESSARY APPROVALS FROM THE CITY OF CORPUS CHRISTI.
17. ALL WORK SHALL BE COMPLETED WITHIN THE SPECIFIED TIME FRAME.
18. THE CONTRACTOR SHALL BE RESPONSIBLE FOR PROTECTING ALL EXISTING UTILITIES AND STRUCTURES.
19. ALL WORK SHALL BE COMPLETED TO THE SATISFACTION OF THE CITY OF CORPUS CHRISTI.
20. THE CONTRACTOR SHALL MAINTAIN A NEAT AND ORDERLY WORK AREA AT ALL TIMES.

STANDARD WATER DETAILS

STANDARD WATER DETAILS

STANDARD WATER DETAILS

BASS AND WELSH ENGINEERING
TK REGISTRATION NO. F-52, 2054 S. ALAMEDA STREET
CORPUS CHRISTI, TEXAS 78405

APPROVED TO
BLUE CHIP IMPROVEMENTS TO
CORPUS CHRISTI, NUECES CO., TX
LOT 4

APPROVED CITY WATER STANDARD DETAILS

DATE: 11-23-2012

DRAWN BY: J. WELSH
CHECKED BY: J. WELSH
SCALE: AS SHOWN
SHEET NO. OF 3

DESIGN APPROVED
CITY OF CORPUS CHRISTI
DATE: 11-23-2012

EXHIBIT 4

BLUECHIP INDUSTRIAL TRACTS, BLOCK 1, LOT 4,
 PLATTING REQUIRED IMPROVEMENTS
 COST ESTIMATE

11044-PCE
 4/3/2012

WATER IMPROVEMENTS		QUANTITY	UNIT	UNIT PRICE	AMOUNT
1.	12" PVC PIPE	1425	LF	34.00	48,450.00
2.	12" GATE VALVE W/BOX	3	EA	2,250.00	6,750.00
3.	12" EL, ANY ANGLE	2	EA	700.00	1,400.00
4.	12" TEE	4	EA	725.00	2,900.00
5.	12" TAPPING SADDLE WITH 12" TAPPING GATE VALVE	1	EA	5,700.00	5,700.00
6.	FIRE HYDRANT ASSY	4	EA	2,100.00	8,400.00
7.	6" GATE VALVE W/BOX	4	EA	900.00	3,600.00
8.	6" EL, ANY ANGLE	4	EA	375.00	1,500.00
9.	6" DIA X 30" PVC PIPE	12	EA	125.00	1,500.00
10.	TRAFFIC CONTROL & BARRICADING DURING CONSTRUCTION AND PREPARE TRAFFIC CONTROL PLAN	1	LS	500.00	500.00
11.	TRENCH SAFETY FOR EXCAVATIONS WHERE WATER LINE IS DEEPER THAN 5'	200	LF	2.00	400.00
12.	PAVEMENT PATCHING	1	LS	2,000.00	2,000.00
13.	ALLOWANCE FOR ADJUSTING GAS LINE AT AGNES ST.	1	LS	6,000.00	6,000.00

TOTAL WATER ITEMS	\$89,100.00
10% ENGINEERING & SURVEYING	\$8,910.00
CONSTRUCTION TESTING	<u>\$821.80</u>
TOTAL	\$98,831.80
LESS ACREAGE FEE VALUE	<u>-\$17,944.33</u>
TOTAL AMOUNT REIMBURSEABLE	\$80,887.47



CITY OF CORPUS CHRISTI
DISCLOSURE OF INTERESTS

City of Corpus Christi ordinance 17112, as amended, requires all persons or firms seeking to do business with the City to provide the following information. Every question must be answered. If the question is not applicable, answer with "NA".

FIRST NAME: Hunter CC I, LP

STREET: 3890 West Northwest Highway, Suite 100 CITY: Dallas, TX ZIP: 75220

FIRM IS: 1. Corporation 2. Partnership 3. Sole Owner 4. Association 5. Other _____

DISCLOSURE QUESTIONS

If additional space is necessary, please use the reverse side of this page or attach separate sheet.

1. State the names of each "employee" of the City of Corpus Christi having an "ownership interest" constituting 3% or more of the ownership in the above named "firm".

Name	Job Title and City Department (if known)
<u>N/A</u>	<u>N/A</u>
_____	_____
_____	_____

2. State the names of each "official" of the City of Corpus Christi having an "ownership interest" constituting 3% or more of the ownership in the above named "firm".

Name	Title
<u>N/A</u>	<u>N/A</u>
_____	_____
_____	_____

3. State the names of each "board member" of the City of Corpus Christi having an "ownership interest" constituting 3% or more of the ownership in the above named "firm".

Name	Board, Commission, or Committee
<u>N/A</u>	<u>N/A</u>
_____	_____
_____	_____

4. State the names of each employee or officer of a "consultant" for the City of Corpus Christi who worked on any matter related to the subject of this contract and has an "ownership interest" constituting 35 or more of the ownership in the above named "firm".

Name	Consultant
<u>N/A</u>	<u>N/A</u>
_____	_____
_____	_____

CERTIFICATE (To be notarized)

I certify that all information provided is true and correct as of the date of this statement, that I have not knowingly withheld disclosure of any information requested; and that supplemental statements will be promptly submitted to the City of Corpus Christi, Texas as changes occur.

Certifying Person: Hunter CC I, LP
Scott Rohrman
(Type or Print)

Signature of Certifying Person: Scott Rohrman, manager

Title: Manager of the G.P.

Date: 3/16/2012