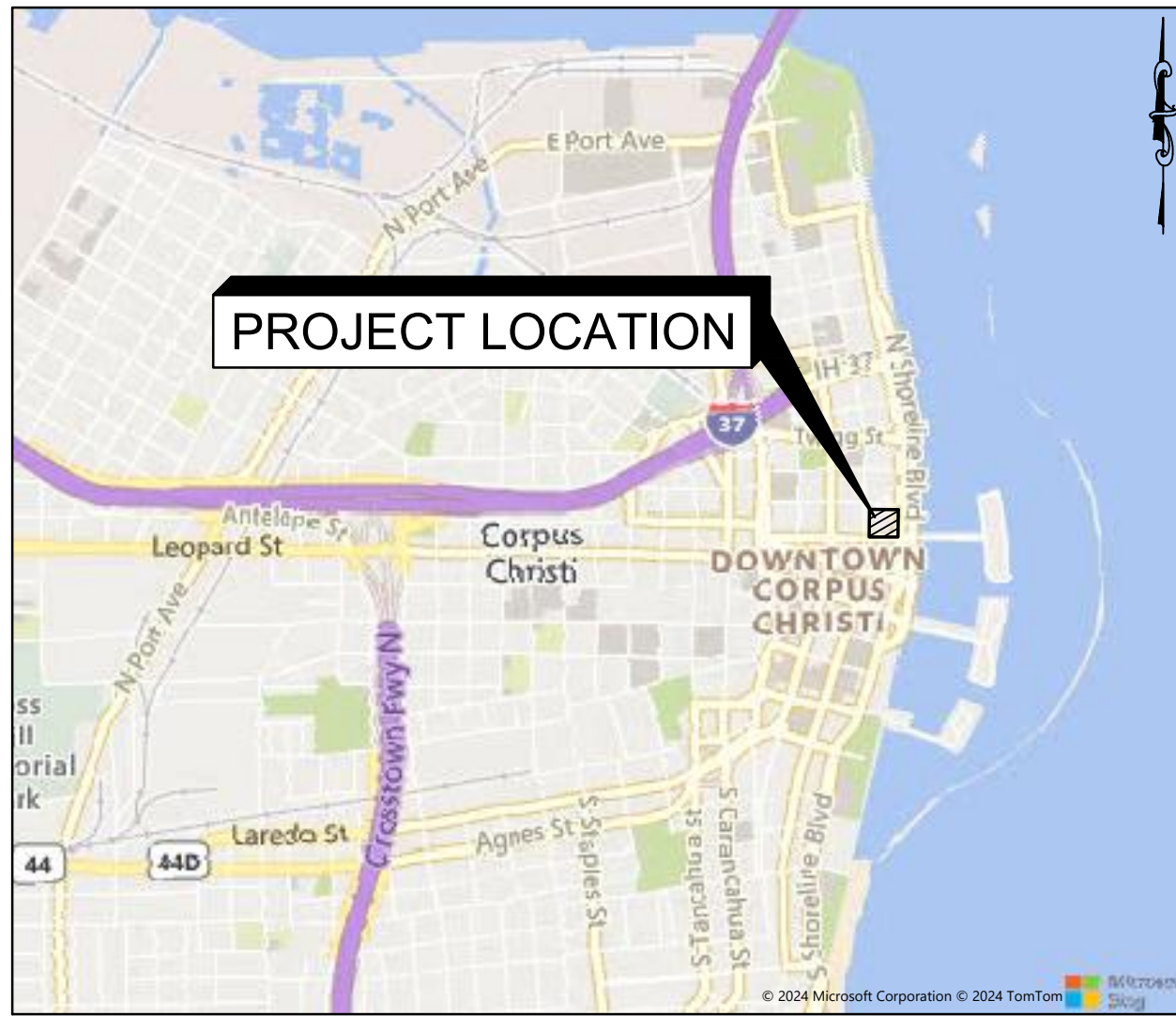
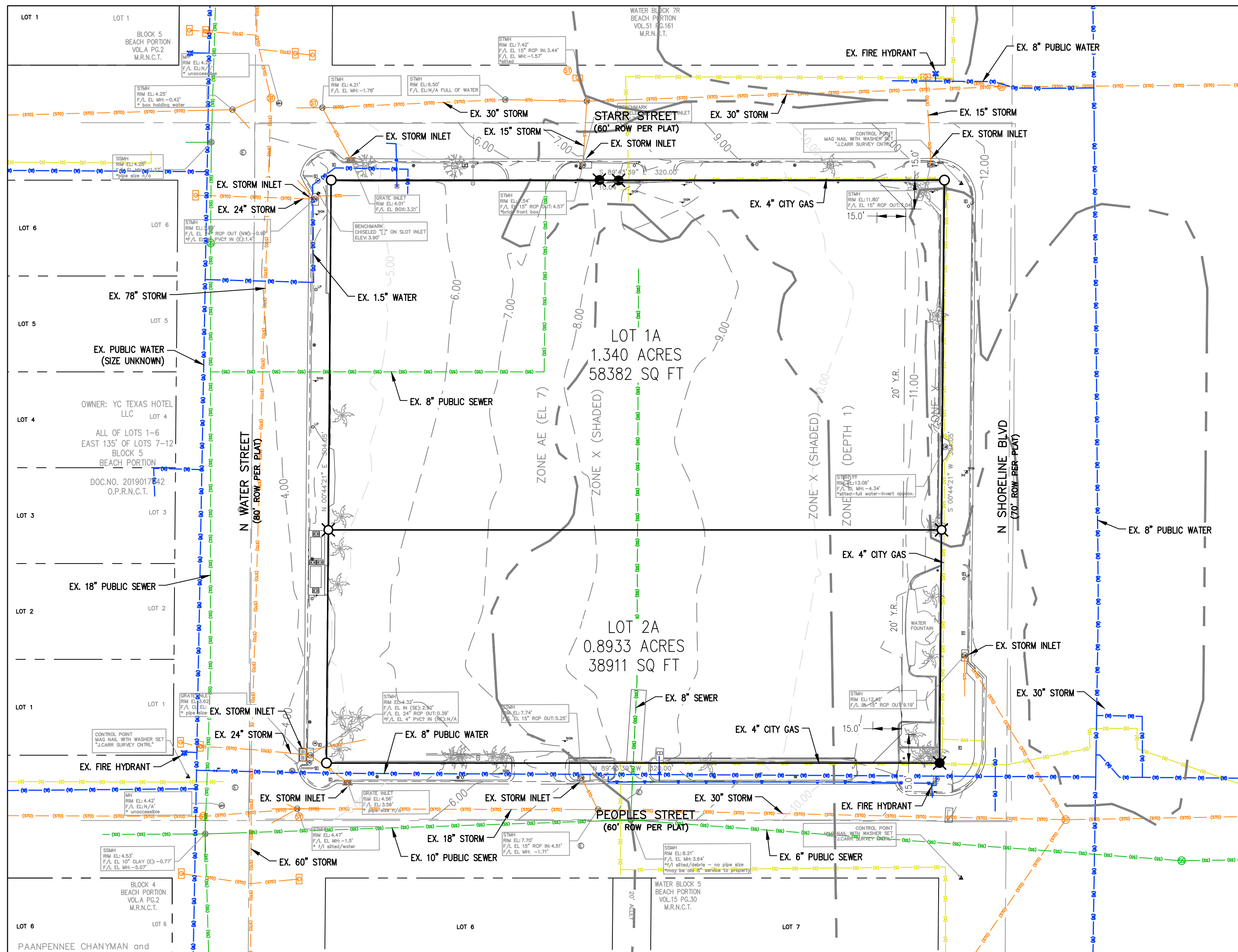


LEGEND

- ✖ DRILL HOLE SET
- ✖ DRILL HOLE FOUND
- ▲ CONTROL POINT "AS NOTED"
- ◆ BENCHMARK "AS NOTED"
- BOLLARD
- ▭ DRAIN/VENT
- ELECTRIC BOX
- ⚡ FIRE HYDRANT
- ⊕ GAS VALVE
- ⚡ LIGHT POLE
- ⊕ MANHOLE - ELECTRIC
- ⊕ MANHOLE - SANITARY SEWER
- ⊕ MANHOLE - STORM SEWER
- ⊕ MANHOLE - TELECOMMUNICATIONS
- ⊕ PARKING METER
- ⊕ SIGN
- ⊕ TELECOMM PEDESTAL/JUNCTION BOX
- ⊕ TRAFFIC SIGNAL
- ⊕ WATER METER
- ⊕ WATER VALVE
- ⊕ VAULT - WATER
- ⊕ VAULT - ELECTRIC
- 🌴 TREE - PALM
- 🌳 TREE - CREPE MYRTLE
- GAS ABOVEGROUND PAINT MARK
- TELECOM ABOVEGROUND PAINT MARK
- WATER ABOVEGROUND PAINT MARK
- SEWER (APPROX. FROM RECORDS)
- WATER (APPROX. FROM RECORDS)
- STORM (APPROX. FROM RECORDS)
- GAS (APPROX. FROM RECORDS)
- STORM MH (APPROX. FROM RECORDS)
- INLET (APPROX. FROM RECORDS)
- SEWER MH (APPROX. FROM RECORDS)
- HYDRANT (APPROX. FROM RECORDS)



LOCATION MAP
SCALE: 1" = 2,000'



FINAL PLAT
UTILITY EXHIBIT
FOR
WATER BEACH ADDITION
BLOCK 6, LOTS 1A & 2A

BEING A RE-PLAT OF LOTS 1 THROUGH 12, WATER BLOCK 6, BAY FRONT WATER BEACH PORTION. A MAP WHICH IS RECORDED IN VOLUME 5, PAGES 38-41, MAP RECORDS OF NUCES COUNTY, TEXAS, INCLUDING THE 20' WIDE ALLEY CLOSED BY CITY ORDINANCE NO. 117305.