



Zoning Case #1015-01

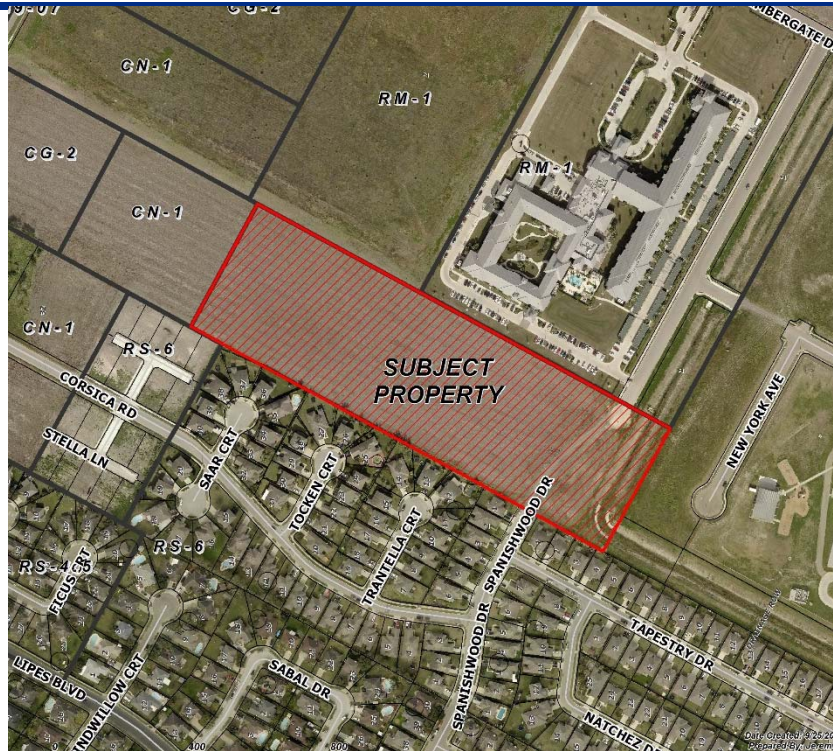
Golden Real Estate and Construction Consulting Group, Inc.

From: "RS-6" Single-Family 6 District
To: "RS-4.5" Single-Family 4.5 District

Planning Commission
Presentation
October 21, 2015

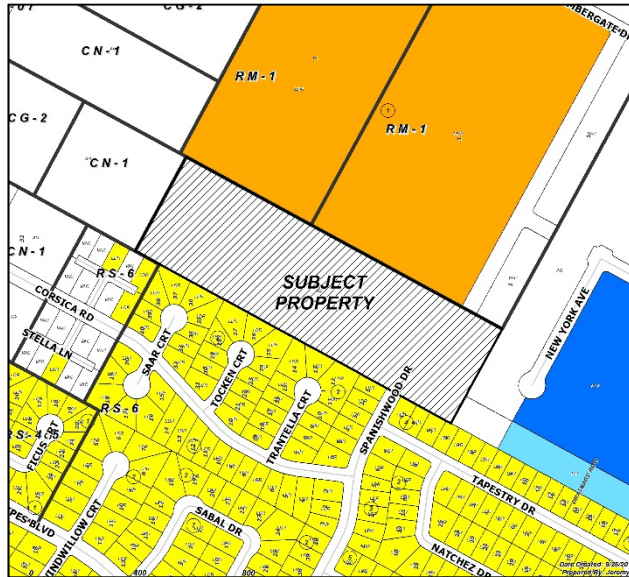


Aerial

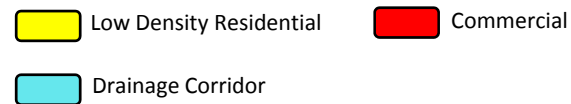
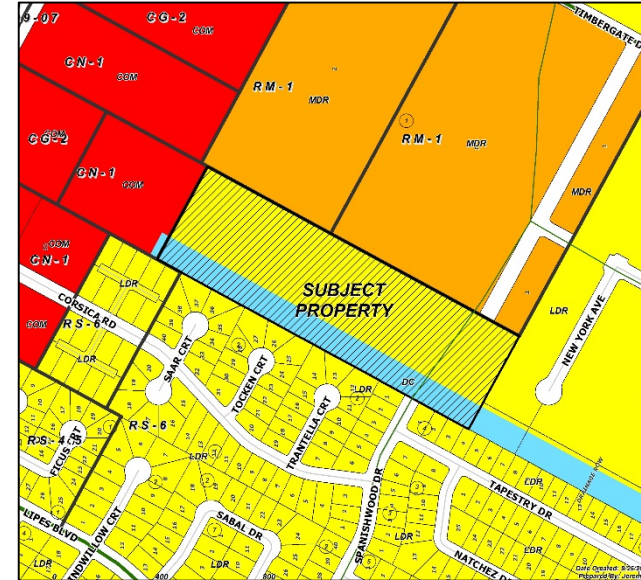




Existing Land Use



Future Land Use





Future Land Use Map





Public Notification

54 Notices mailed inside 200' buffer
5 Notices mailed outside 200' buffer

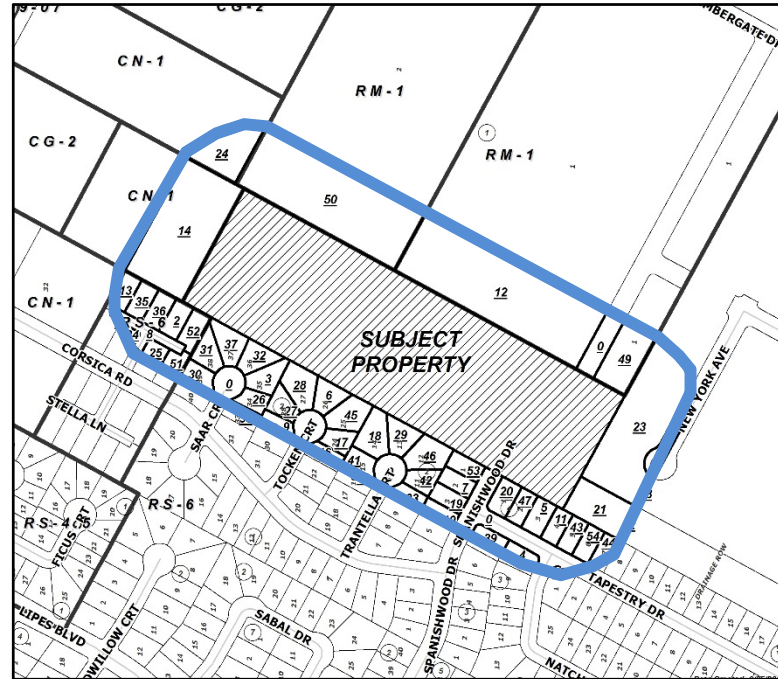
Notification Area



Opposed: 0 (0.00%)



In Favor: 0





Staff Recommendation

Approval of the
“RS-4.5” Single Family 4.5 District