

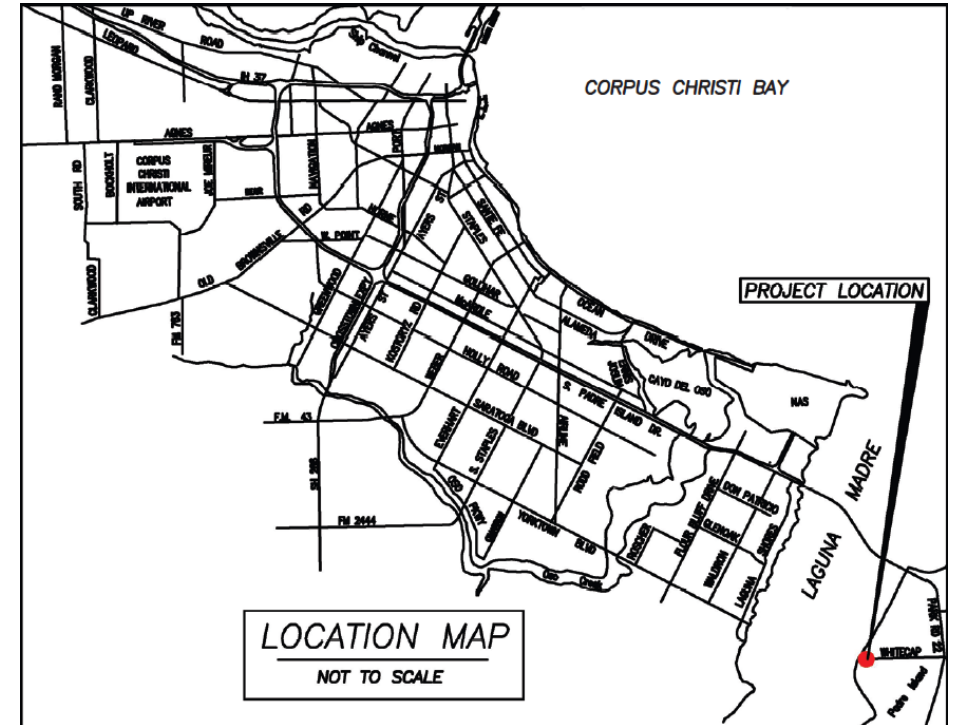
Construction Contract Award - Whitecap Wastewater Treatment Plant Operations & Control Center

Wesley Nebgen

Director of Water System Infrastructure

March 17, 2026

Project Location



Background

- The City of Corpus Christi owns and operates six wastewater treatment facilities (WWTP), including Whitecap WWTP
- The existing 1,584 square foot administration building was constructed in 1974
- Over the past 50 years, the relentless coastal environment and the corrosive nature of wastewater processing have taken a significant toll on the structure
- The building does not meet current operational needs and has reached the end of its functional lifespan



Current Conditions

- Laboratory space is insufficient and has become a crowded workspace, impacting the efficiency of staff operations for wastewater treatment analysis
- Limited and cluttered workspace in the laboratory, combined with close proximity of computer workstations to wet lab activities, increases the risk of accidents, equipment damage, and cross-contamination
- New wastewater treatment monitoring technologies and SCADA have been installed in office spaces and storage areas due to a lack of sufficient space
- Limited space makes it difficult to implement proper safety measures, such as clear pathways and emergency exits, further increasing the potential for accidents or injuries to staff



Current Conditions

- The exterior building walls have significantly deteriorated, with several cracks and gaps in the walls that allow the elements to intrude into the interior spaces through the breaks in the façade
- Staff have attempted to patch over these areas multiple times, but the facility is beyond repair
- The structural integrity of the building is compromised, which is a critical safety hazard



Structural Deterioration

- The corners of the building are separating, cracking, and crumbling
- Pieces of the wall are falling off the building
- Small cracks are filled with silicone to prevent water leaks
- Large cracks are filled with mortar to prevent sunlight from shining inside the building
- Some cracks extend the full height of the walls and the separations at the corners are 6-inches deep through the building structure



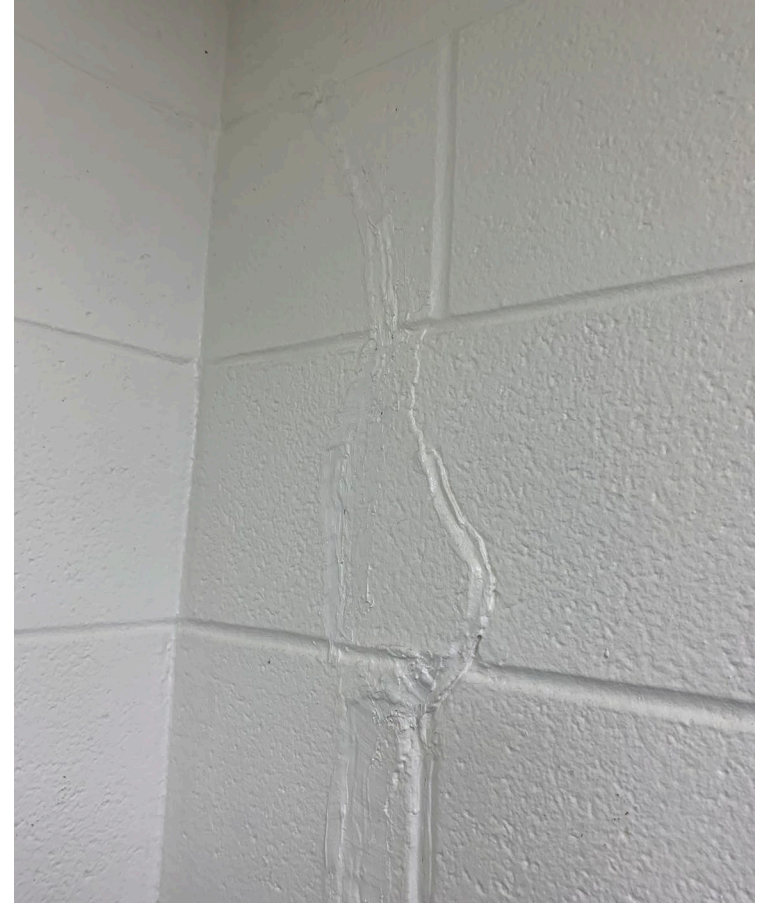
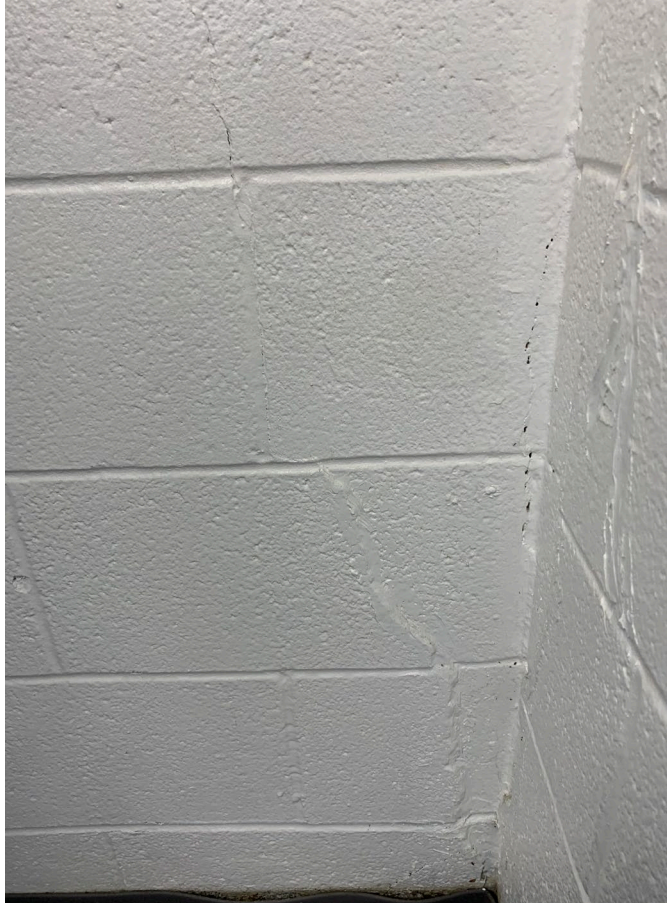
Exterior Wall Separation at Corners



Exterior Wall Repairs



Interior Wall Repairs



Cramped Laboratory Space



Crowded Work Environment



Scope of Work

- New one-story 5,214 square foot operations and control center
- Designed as Risk Category IV – Essential Facility, ensuring it remains operational and resilient during extreme weather events
- The new facility will be equipped with a process control laboratory and vent hoods, controls center, monitoring stations, administrative areas, restrooms and locker rooms, storage areas, new natural gas emergency power generator, and rehabilitation of the existing parking area
- Improvements will provide safe, adequate, and functional working spaces for plant staff to efficiently monitor and control wastewater treatment processes, analyze water samples to ensure effluent meets TCEQ standards, and store equipment
- The new building reflects the City's commitment to investing in the well-being and safety of staff by creating a positive and productive work environment



Conceptual Renderings

Project Timeline

2024-2025	2025-2026	2026-2027
March - October	November - March	April - April
Design	Bid/Award	Construction

Schedule reflects City Council award in March 2026, with anticipated construction completion by April 2027

Staff Recommendation and Fiscal Impact

Staff recommends awarding a construction contract to Victory Building Team for the Whitecap WWTP Operations & Control Center in an amount not to exceed \$3,658,500.00. Construction funds are available from the Wastewater Capital Fund. The project funding was approved by City Council in the FY 2026 Capital Budget.



CITY OF CORPUS CHRISTI
**CORPUS CHRISTI
WATER**