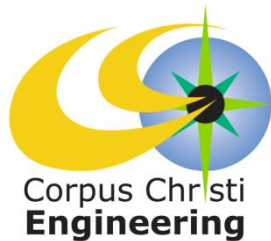




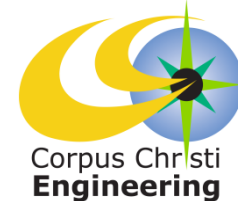
# Public Safety Warehouse Re-Bid (Bond 2008)



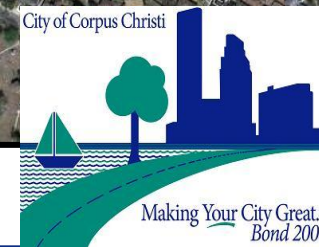
Council Presentation  
October 8, 2013



# Project Scope

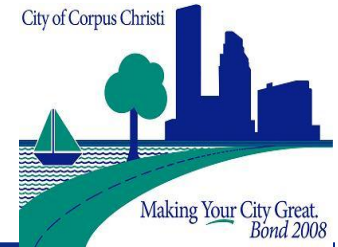
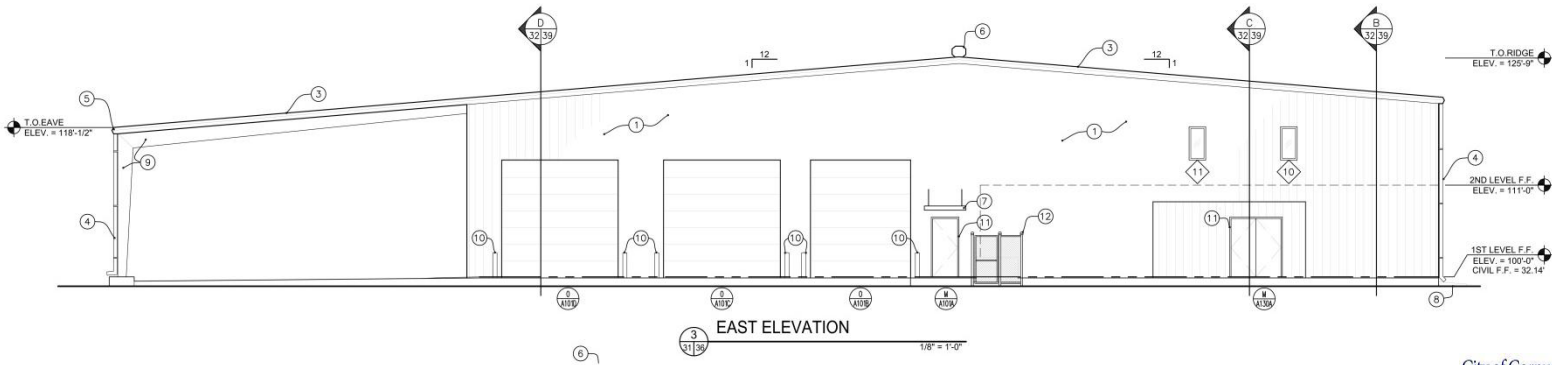
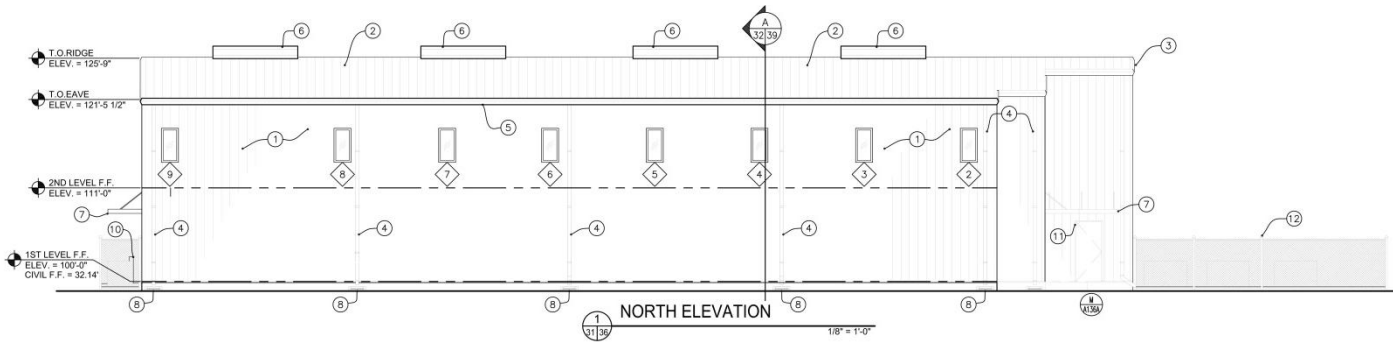
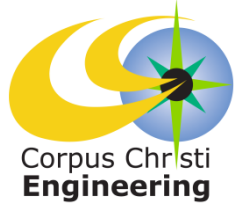


- Two storied office complex with attached 5,800 SF safety warehouse
- 72 secured parking spaces between new building and Holly Road
- 14 secured parking spaces on West side of new building
- 4,000 SF lean-to on South side of warehouse



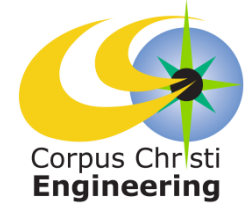


# Project Scope





# Project Schedule



| 2013   |     |     |     |     |           |     |     |     |     | 2014         |     |     |     |     |     |     |
|--------|-----|-----|-----|-----|-----------|-----|-----|-----|-----|--------------|-----|-----|-----|-----|-----|-----|
| Feb    | Mar | Apr | May | Jun | Jul       | Aug | Sep | Oct | Nov | Dec          | Jan | Feb | Mar | Apr | May | Jun |
| Design |     |     |     |     | Bid/Award |     |     |     |     | Construction |     |     |     |     |     |     |

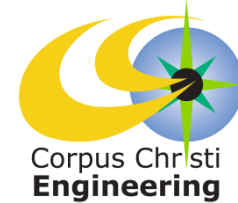
## Project Estimate: 240 Calendar Days ≈ 8 Months

Projected Schedule reflects City Council construction contract award in October 2013 with anticipated construction completion in June 2014.





# Project Budget



| <b>Public Safety Warehouse Re-Bid (Bond 2008)</b>                                      |                        |
|--|------------------------|
| <b>Project No. 5244</b>  |                        |
| <b>PROJECT FUNDS AVAILABLE:</b>  |                        |
| General Fund Reserves**  | \$ 1,500,000.00        |
| Police Grants  | 330,000.00             |
| Police Building M & O  | 173,050.00             |
| 911 Delivery Wireless  | 96,000.00              |
| Bond 2008 Public Safety Warehouse  | 500,000.00             |
| Police Department Operational Reserves   | 75,000.00              |
| Project Total  | <b>\$ 2,674,050.00</b> |
| <b>FUNDS REQUIRED:</b>   |                        |
| Construction (Henock Construction).....  | \$ 2,103,883.77        |
| Contingency (10%).....   | \$ 210,388.38          |
| <u>Engineering Fees:</u>   |                        |
| Engineer (Lamarr Womack Architects)*.....  | \$ 147,141.00          |
| Geotechnical Study and Testing (Rock Engineering).....                                 | \$ 10,084.00           |
| Construction Materials Testing (Rock Engineering).....                                 | \$ 12,000.00           |
| Construction Inspection Services (Estimate).....                                       | \$ 82,000.00           |
| <u>Reimbursements:</u>   | \$ 107,038.36          |
| <b>TOTAL.....</b>  | <b>\$ 2,672,535.51</b> |
| <b>ESTIMATED PROJECT BUDGET BALANCE.....</b>   | <b>\$ 1,514.49</b>     |
| *A/E Agreement approved by City Council M2012-029, January 31, 2012;                   |                        |
| **Appropriation of \$500,000.00 approved by City Council Ord. 29362, January 31, 2012; |                        |
| Appropriation of \$1,000,000.00 approved by City Council Ord. 29762, March 19, 2013.   |                        |

