

**Easement Closure**

**3.0633 Acre Drainage Easement Closure Being out of Lot 6,  
Section 7, Bohemian Colony Lands**

City Council Presentation

04/12/22



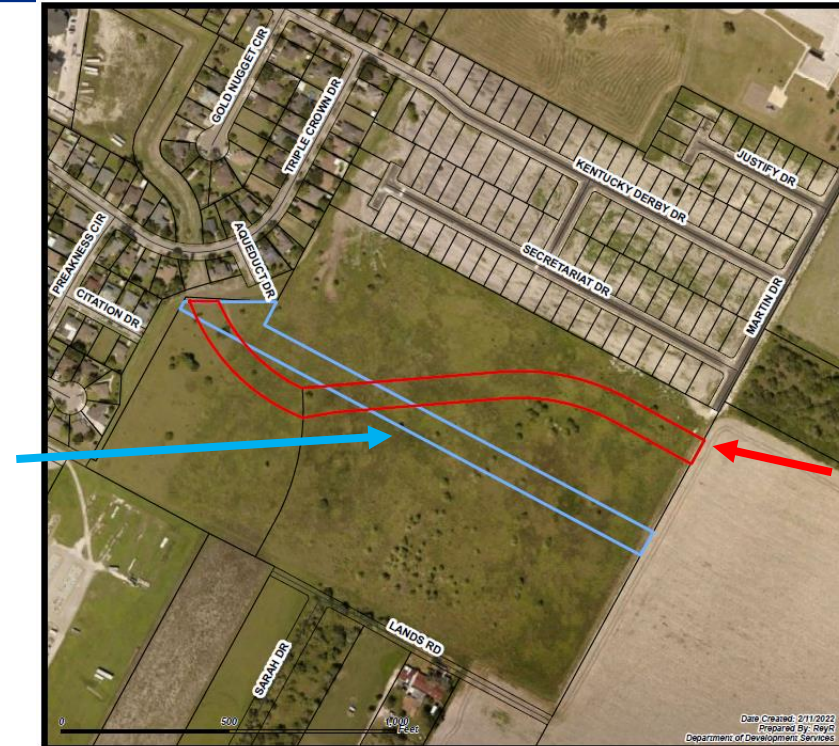
# Vicinity Map





# Aerial Overview



Blue boundary line will be the proposed drainage easement



Red boundary line is the drainage easement closure requested by applicant

## Easement Closure

3.0633 Acre Drainage Right-of-Way Closure  
Being out of Lot 6, Section 7,  
Bohemian Colony Lands

-  Drainage Easement Closure
-  Drainage Right of Way

Map Scale: 1:3,600





# Staff Recommendation

---

## Approval

The applicant requesting the utility easement closure has paid the required \$1054 application fee the easement closure request has been processed in accordance with Section 49-13 of the City Code of Ordinances.

---