

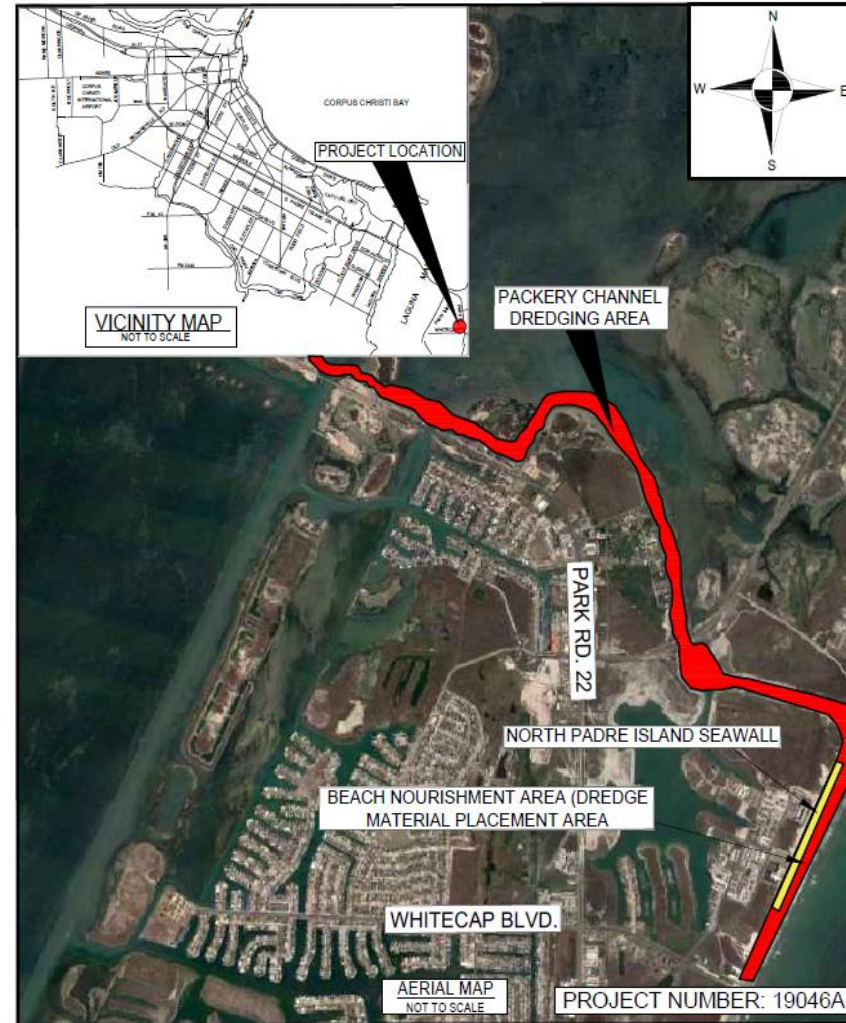
Packery Channel Dredging and Beach Nourishment



Council Presentation
June 27, 2023



Project Location





Project Scope



This project will consist of:

- Hydraulic dredge from Packery Channel and placement of the dredged material as beach nourishment along the Gulf shoreline to the south of Packery Channel.
- Approximately 270,000 cubic yards of sandy maintenance material will be excavated from the channel to reestablish required depths.



Project Schedule



2020	2023	2023
January - September	Feb - June	July - December
Design	Bid/Award	Construction

This project schedule reflects City Council award on June 2023, with anticipated construction start in July 2023.