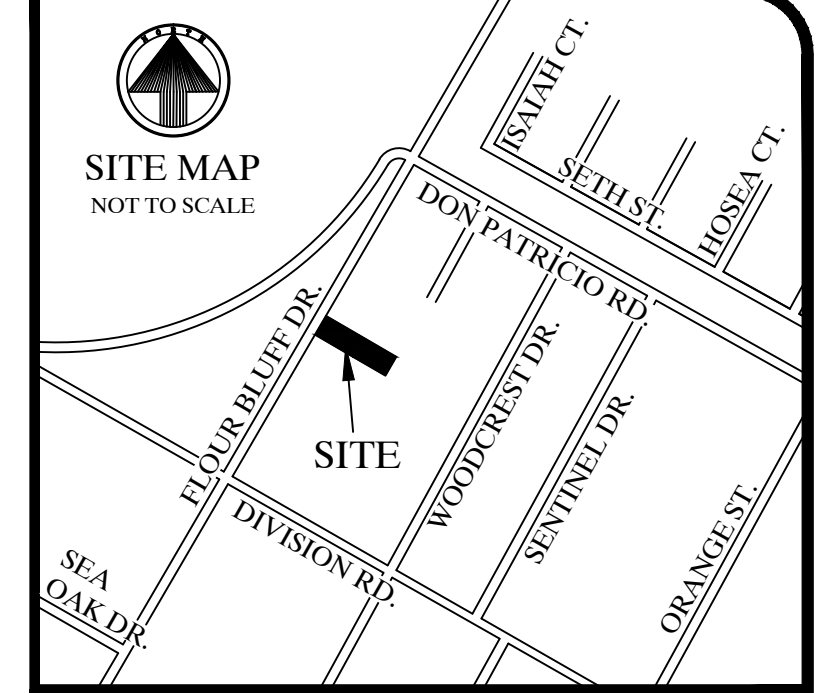
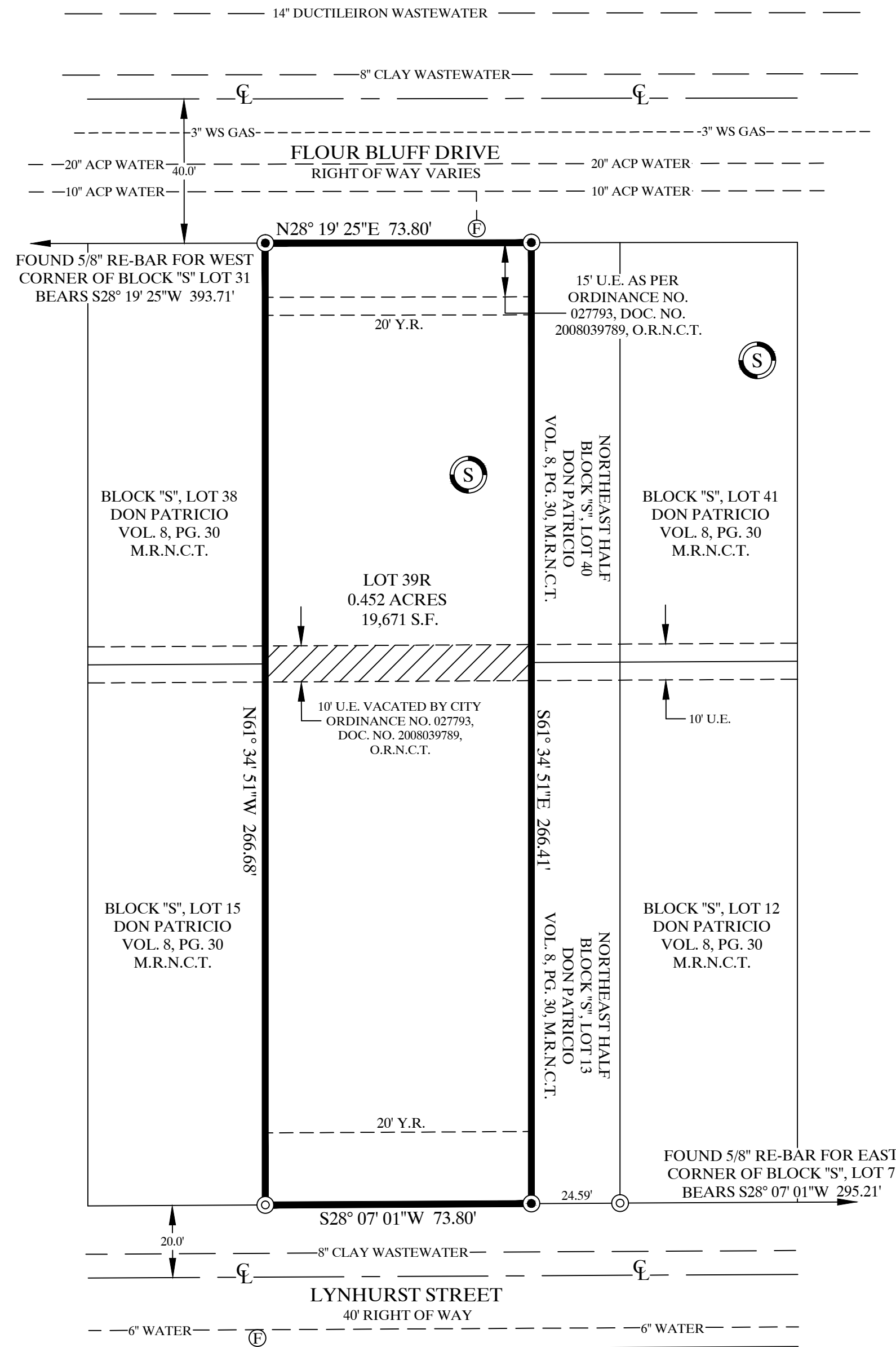


# UTILITY PLAN FOR DON PATRICIO BLOCK "S", LOT 39R

BEING A REPLAT OF BLOCK "S", LOTS 14 & 39 AND THE SOUTHWEST HALF OF LOTS 13 & 40, DON PATRICIO, AS SHOWN ON THE PLAT RECORDED IN VOLUME 8, PAGE 30, MAP RECORDS OF NUECES COUNTY, TEXAS.



**Brister Surveying**  
 4455 South Padre Island Drive Suite 51  
 Corpus Christi, Texas 78411  
 Office 361-850-1800  
 Fax 361-850-1802  
 bristersurveying@corpus.twcba.com  
 Firm Registration No. 10072800

- Ⓢ = FIRE HYDRANT
- Ⓞ = SET 5/8" RE-BAR
- Ⓟ = FOUND 5/8" RE-BAR

UTILITIES SHOWN ARE BASED ON THE CITY OF CORPUS CHRISTI GIS.