



# Strategic Plan for Active Mobility Phase I: Bicycle Mobility

City of Corpus Christi  
City Council  
May 17, 2016

Jeff Pollack  
Transportation Planning Director





## **Active Mobility Plan Vision**

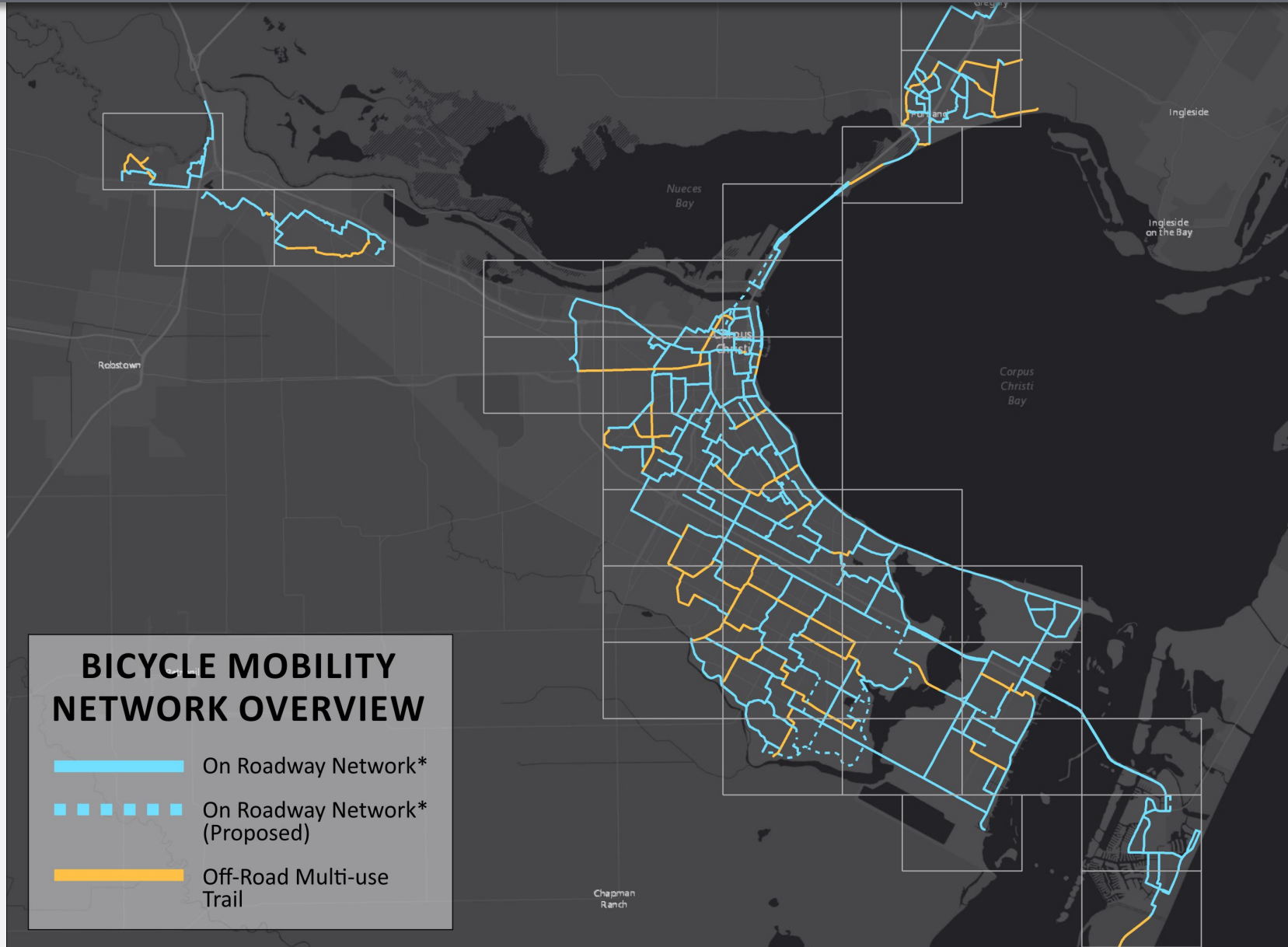
The metropolitan area of the Coastal Bend is a place where walking and biking are integral to the community culture and represent viable, safe travel and recreation options for residents and visitors of diverse abilities.



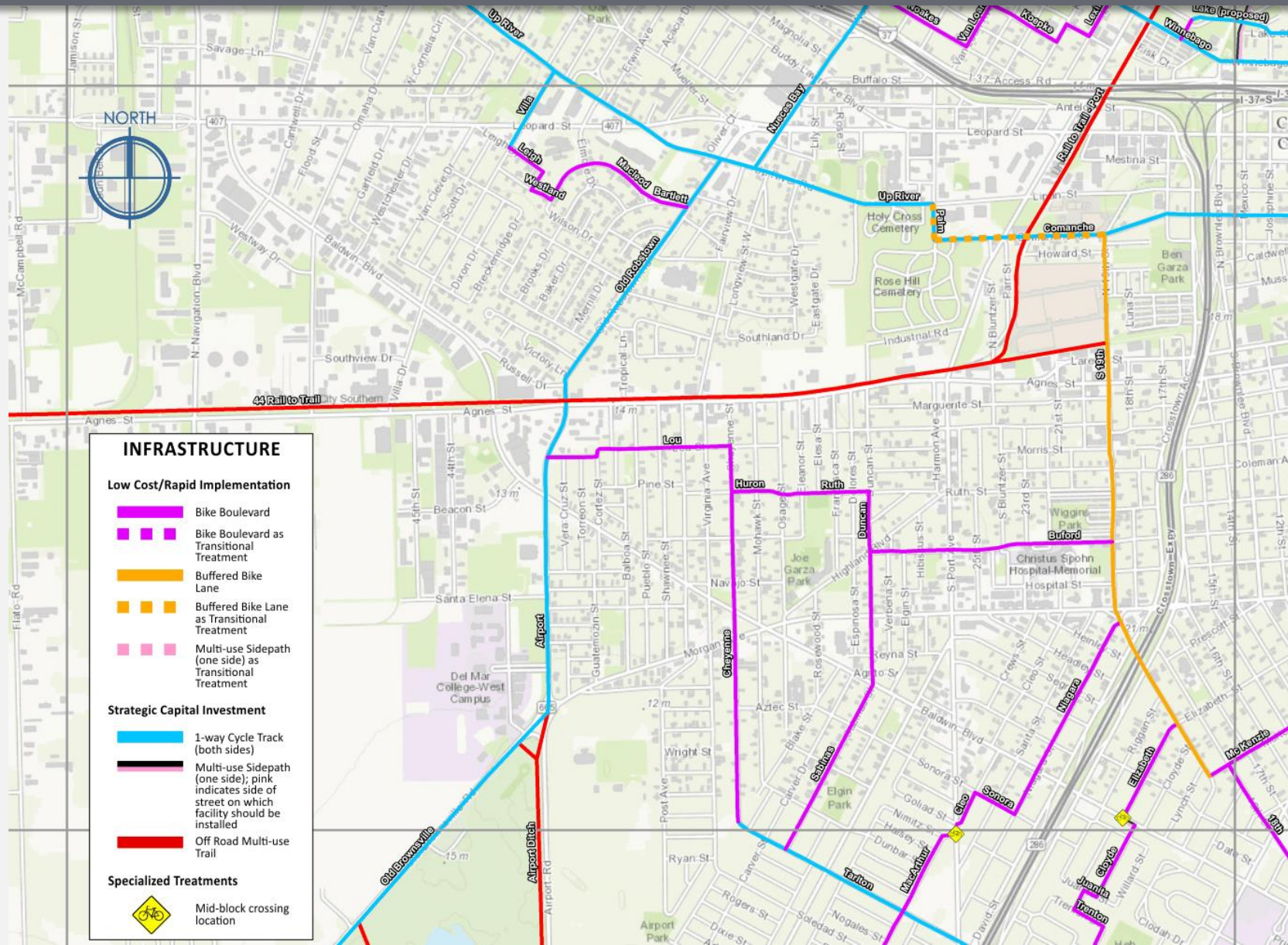
## Phase I Goals

1. Develop of a cohesive, strategic network of bicycle facilities that accommodates a diversity of riders.
2. Enhance bicycle mode share for trips of all types.
3. Promote health and wellness through bicycling.
4. Enhance safety for bicyclists.

# Bicycle Mobility Network Overview



# Bicycle Mobility Network Overview





# Bicycle Mobility Network Overview



<b>Key Destinations</b>	<b>Description</b>	<b>% within ¼ mile of Bike Network</b>
<b>Academic</b>	Early education/Daycare centers, grade schools (public and private), higher education campuses	<b>89%</b> (158 of 175)
<b>Parks</b>	Greater than 2 acres in size	<b>85%</b> (122 of 143)
<b>Food</b>	Groceries, meat and fish markets, bakeries, corner markets	<b>80%</b> (104 of 130)
<b>Low-income Housing</b>	Section 8 or Tax Credit properties	<b>82%</b> (541 of 657)
<b>Transit</b>	Stops and stations	<b>83%</b> (1088 of 1319)
<b>Recreation</b>	Pools, senior centers, recreation centers, movie theaters, fitness centers, museums and hotels	<b>77%</b> (186 of 242)



## Outreach:

- 205 **MAP IT** routes by 99 discrete users
- 730+ discrete users logged 8353 routes via **TRACK IT** smartphone app
- 220 on-line **ANSWER IT** survey responses
- 25+ presentations by MPO Director or staff
- 15 public events attended by consulting team
- 50+ interviews conducted
- 900 + leaflets/posters distributed
- 5 focus groups conducted:  
[industry, business owners, design engineers, RTA operators, CCPD]



## STRATEGIC PLAN FOR ACTIVE MOBILITY

People-powered! Mobility para su corazón

### INTRODUCTION

The Strategic Plan for Active Mobility for Nueces and San Patricio counties will replace the 2005 Bike and Pedestrian Master Plan. Phase I, Bicycle Mobility is underway; Phase II, Pedestrian Mobility, will follow in 2016.

When finished, this Plan will be the roadmap for a cohesive network that links key destinations in the Coastal Bend and provides a meaningful and safe transportation alternative. Find answers to [Frequently Asked Questions](#).



### MAP IT!

Use our on-line mapping tool to show us where you ride or where you'd like to ride if the conditions for cycling improved. View a short (2 minute) [video](#) on how to use the mapping tool.

### VISION

The metropolitan area of the Coastal Bend is a place where walking and biking are integral to the community culture and represent viable, safe mobility and recreation options for residents and visitors of diverse abilities.

Share your thoughts on this [VISION](#).



### TRACK IT!

Download Strava to your Smartphone and use it to log the routes you ride. While originally designed as a tools for athletes, Strava can also be used to track the rides of commuting or recreational cyclist; the Bike Mobility planning team will use this information to identify priority routes.



### ANSWER IT!

Take our very short (5 minute) on-line survey to share your priorities for community cycling programs and supporting infrastructure.

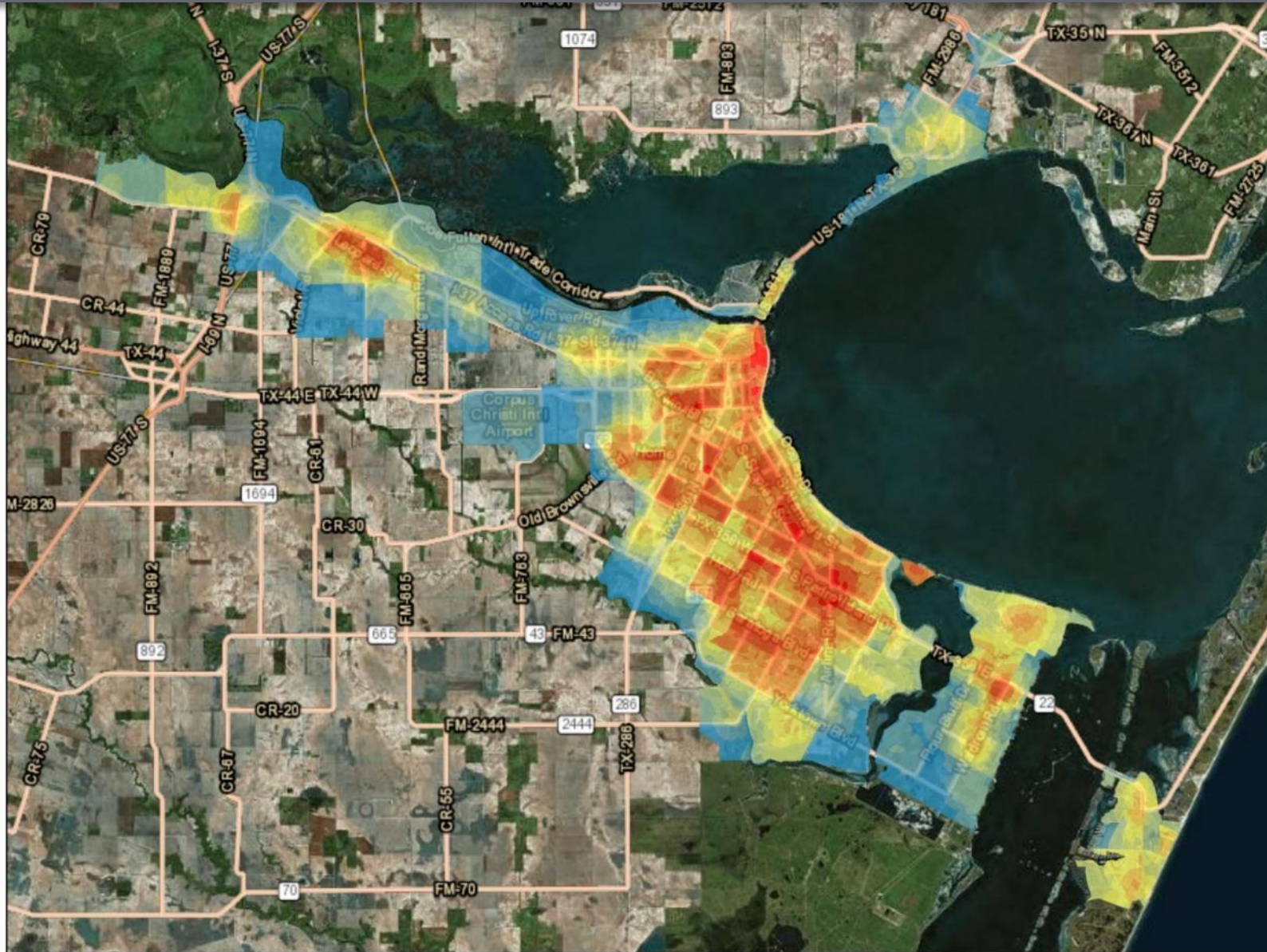




## “Where” Question: 2-part analysis (blank slate approach)

Primary Data	Supplemental Data
<b>Academic Institutions</b>	Vehicular Origins/Destinations (Travel Demand Model)
<b>Low Income Housing</b>	Employment to Population Ratio (TDM)
<b>Transit Stops/Stations/Bike Boardings</b>	Population and Employment Density (TDM)
<b>Food</b>	Zero Car Households (census)
<b>Parks (&gt; 2 acres)</b>	Bike to Work (census)
<b>Recreation/Tourism</b>	City of Corpus Christi Destination Nodes (2011 Sustainability Plan)

# Network Development – Hotspot Analysis





## Groundtruthing and Refinement of Network

- Comparison to user submitted routes
- Extensive vetting
  - Municipal staff (multiple departments, Corpus Christi, Portland, Gregory)
  - Downtown stakeholders (DMD, CVB, SEA District)
  - ISAC officers
  - North Beach Community Association
  - NAS/CCAD
  - Realtors Association
  - Select developers
  - Nueces and San Patricio Counties
  - Texas A&M University – Corpus Christi





## “What” Question – Facility Selection

- Not one-size-fits-all infrastructure
  - Proprietary model
- Segment data inputs:
- **Traffic volume**
  - **Posted speed**
  - ROW and shoulder widths
  - Number travel lanes
  - Number driveways
  - Presence of curb/gutter
  - Presence/utilization on-street parking



# Infrastructure Illustrations



## Bike Boulevard



**Bicycle Boulevards**

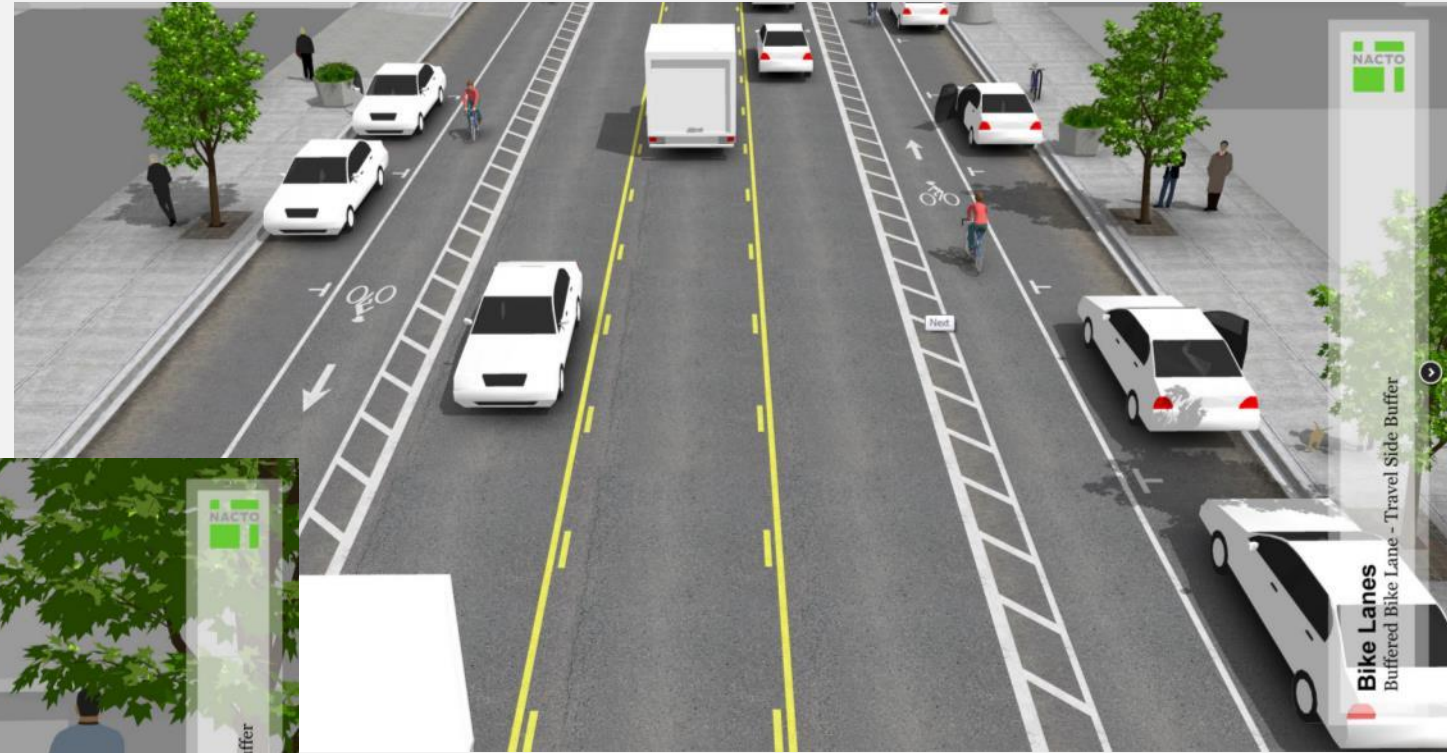
Bicycle Boulevard Signs and Pavement Markings - Decision Sign



# Infrastructure Illustrations



## Buffered Bike Lane



**Bike Lanes**  
Buffered Bike Lane - Travel Side Buffer



**Cycle Tracks**  
One-Way Protected Cycle Track with Parking Buffer



# Infrastructure Illustrations



**1-way Cycle Track,  
Both Sides  
(Unconstrained ROW)**



**Rodd Field Rd.**



# Infrastructure Illustrations



## 1-way Cycle Track, Both Sides (Constrained ROW)



Corona Dr.

# Network Development – Infrastructure Selection

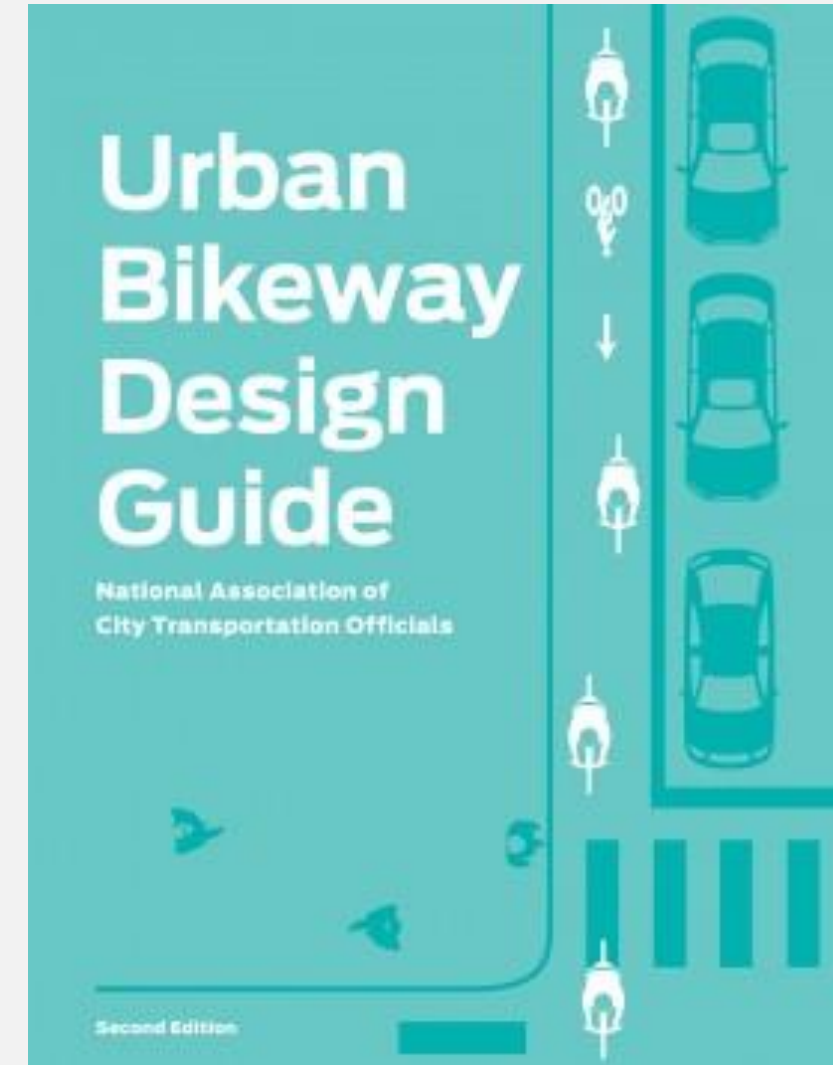


Infrastructure Type	Network Miles	% of Network
<b>Low Cost/High Impact/Rapid Implementation*</b> <i>*No major capital investment required other than paint and signage</i>		
<p style="text-align: right;"><b>Bicycle Boulevard</b></p>	64	22
<p style="text-align: right;"><b>Buffered Bike Lane</b></p>	7	2
<b>Strategic Capital Investments</b>		
<p style="text-align: right;"><b>1-way Cycle Tracks</b></p>	145	50
<p style="text-align: right;"><b>Multi-use Sidepaths</b></p>	8	3
<p style="text-align: right;"><b>Off-road Multi-use Trails</b>                      (on stormwater and old railroad easements)</p>	66	23
	<b>290</b>	



## “How” Question – Facility Design

- National standards for typology & design
- NACTO Urban Bikeway Design Guide as default





# Best Practice Recommendations



<b>Matrix of Best Practices</b>
<b>Education &amp; Encouragement Programs</b>
Cycling Skills and Safety
Incentive and Reward Programs
Lifestyle Promotion
Planning and Public Health
<b>Supporting Infrastructure</b>
Trip Support Facilities
Wayfinding
<b>Policy &amp; Code Reform</b>
Planning Framework
Codes and Law Enforcement
Investing in Infrastructure
<b>Program Evaluation</b>
Performance Measures
Program Oversight

# Questions?



**jpollack@cctxmpo.us**  
**www.corpuschristi-mpo.org**  
**www.CoastalBendInMotion.org**

