


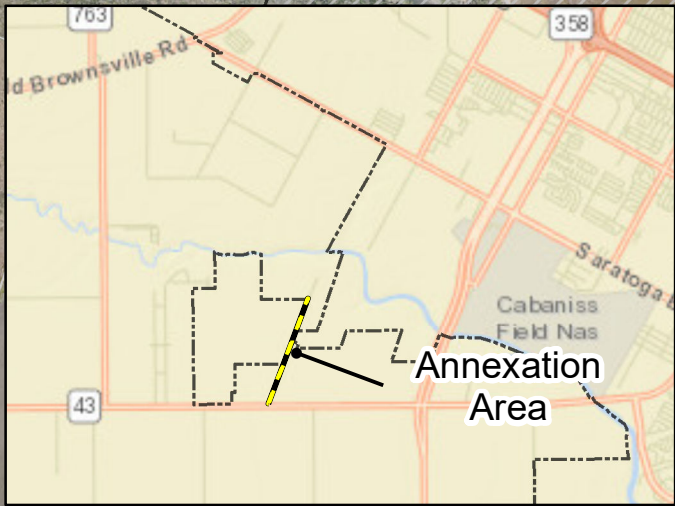


**Legend**

-  Annexation Area
-  Road Centerline
-  City Limits



**LONDON PIRATE ROAD**

**Annexation Area  
3.733 Acre**

**FM 43**

Annexation Area is London Pirate Rd ROW from FM 43, North to the NE corner of the London Towne Subdivision. This alignment of ROW includes a segment already contained within the City limits. The assumption of area associated with the London Pirate Rd ROW is based upon the presumed centerline of the existing roadway and a 30 ROW width.



**City of  
Corpus Christi**

**Print Date: 03/18/2021**  
*Exhibit B: Annexation Area*  
**= 3.733 acres**

