

Professional Services Contract Amendment No. 2 ONSWTP Navigation Pump Station Improvements

DRAFT

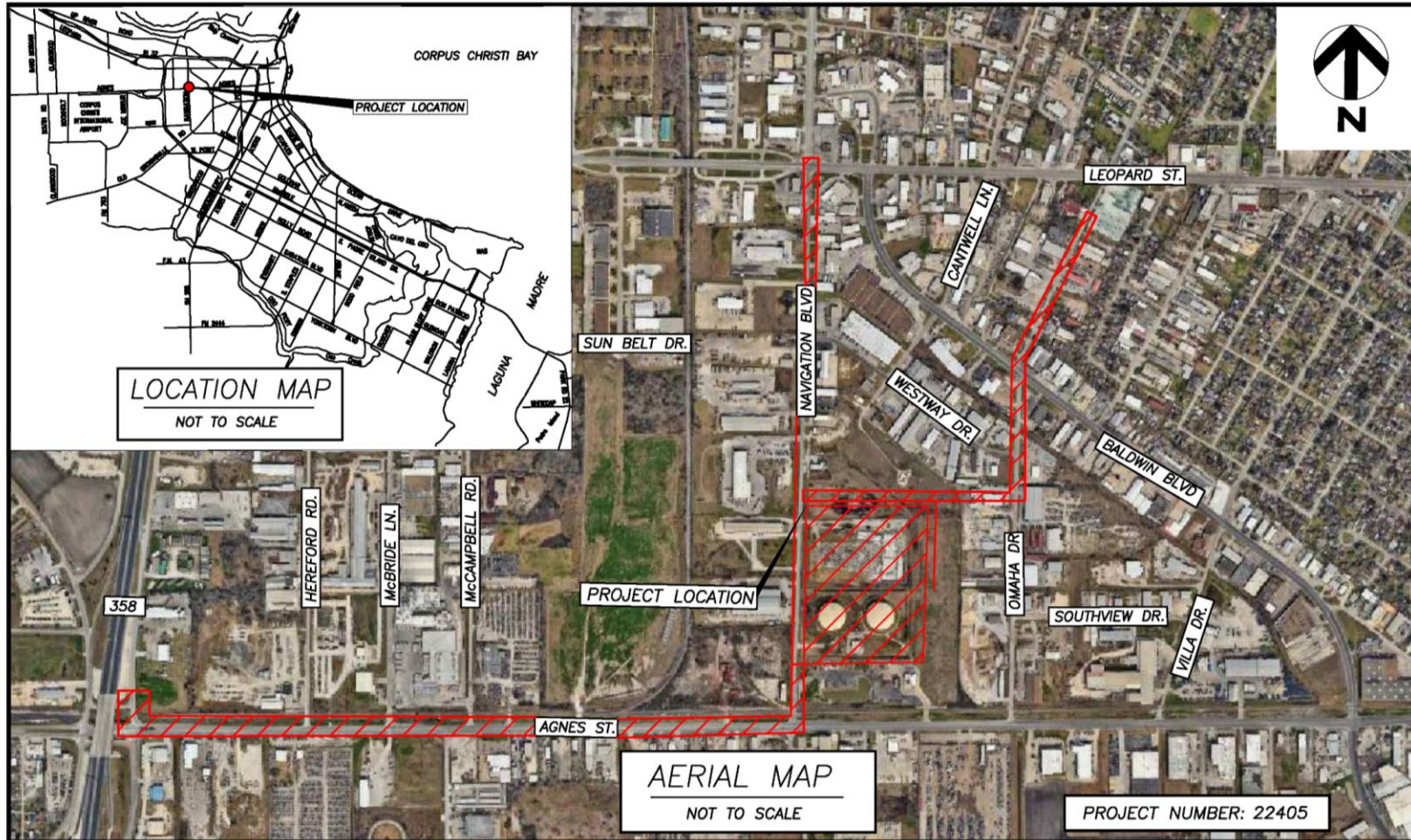
Nicholas Winkelmann, P.E.

Director of Water Systems and Support Services

December 10, 2024



Project Location



ONSWTP NAVIGATION PUMP STATION IMPROVEMENTS

CITY COUNCIL EXHIBIT
CITY OF CORPUS CHRISTI, TEXAS
DEPARTMENT OF ENGINEERING SERVICES



Background

- Navigation Pump Station consists of two 10-million-gallon ground storage tanks, three 350 HP booster pumping assemblies, control valves, and other associated equipment
- System previously decommissioned in 2018 due to hydraulic integration challenges
- During initial design phase, analysis and investigation resulted in the need for additional scope to effectively complete design, **ensuring the pump station achieves the reliability and resiliency goals CCW has established for the project**



Additional Design Scope of Work

- **Foundation and baffle repairs of ground storage tanks**
- **Additional subsurface utility exploration and geotechnical work due to transmission line crossing a railroad**
- **Design of approximately 3,100 linear feet of 36-inch transmission line**
- **Increasing the diameter of existing ground storage piping from 24-inch to 36-inch**
- **Modifications to existing pump station piping and upgraded electrical equipment**



Staff Recommendation

- Staff recommends approval of the professional services contract amendment No. 2 with STV, Inc., in an amount not to exceed \$626,237.00 for the ONSWTP Navigation Pump Station Improvements project
- The fiscal impact to FY 2025 is an amount not to exceed \$626,237 with funding available through the Water Capital Fund
- Currently the project has \$1,777,056 budgeted for design - the \$379,946 shortfall will be coming from \$5,780,088 in construction cost savings from the Nueces Bay Blvd & Poth Lane water line replacement project

Project Schedule

2023-2025	2025 - 2025	2025 - 2026
September – April	April - June	July - November
Design	Bid/Award	Construction

The top half of the slide features four horizontal, wavy bands of varying shades of blue, creating a sense of movement and water. The bands are layered, with the lightest shade in the middle and darker shades on the top and bottom.

Thank you!

The logo for Corpus Christi Water (CCW) features the letters 'CCW' in a bold, blue, sans-serif font. The letters are filled with a wavy pattern of light blue and white, matching the decorative bands at the top of the slide.

Corpus
Christi WaterSM
Serving the Coastal Bend