



Zoning Case #0616-02 Coastal King, Ltd.

From: “CN-1” Neighborhood Commercial District

To: “CG-2” General Commercial District

Planning Commission Presentation
June 1, 2016

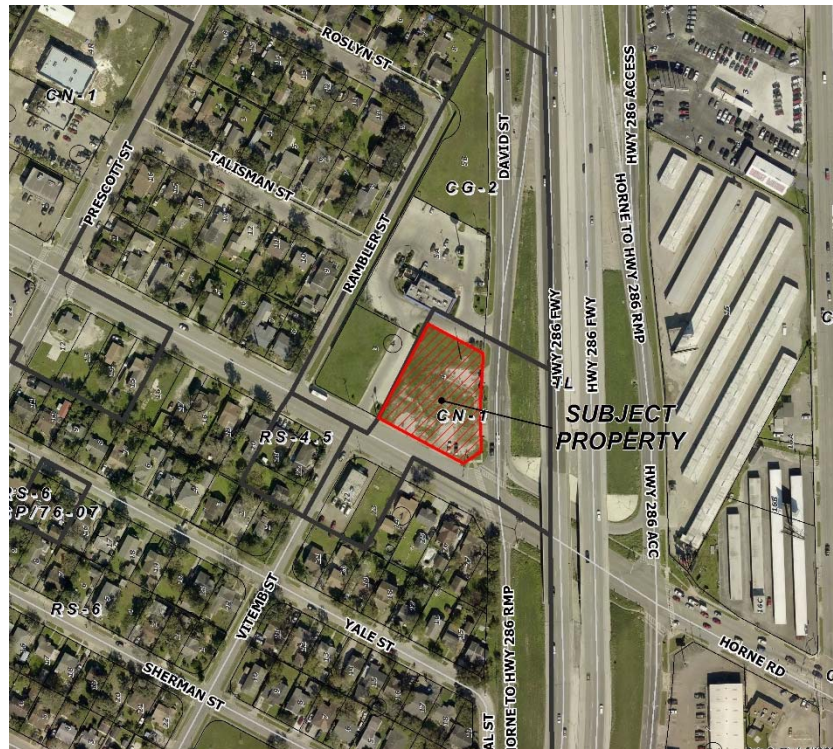


Aerial Overview



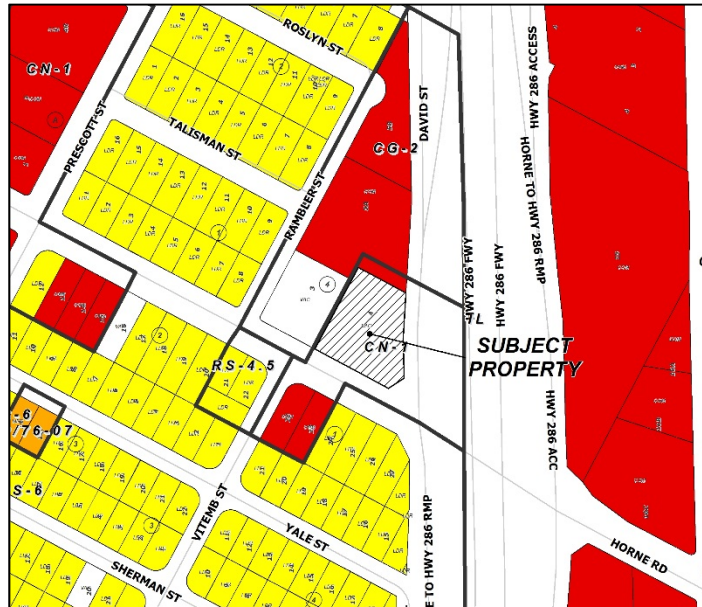


Aerial

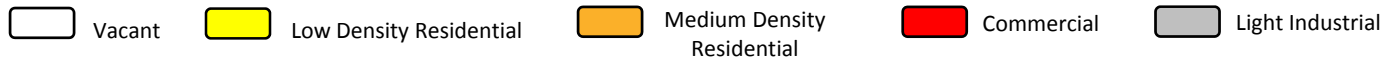
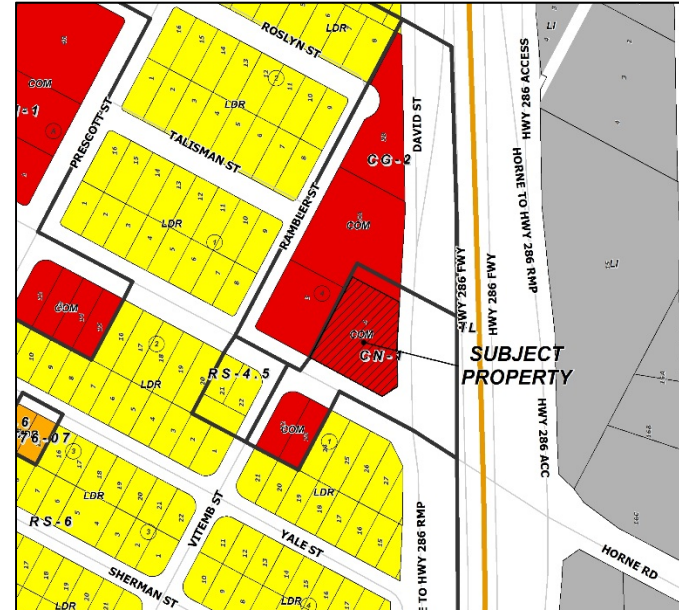




Existing Land Use

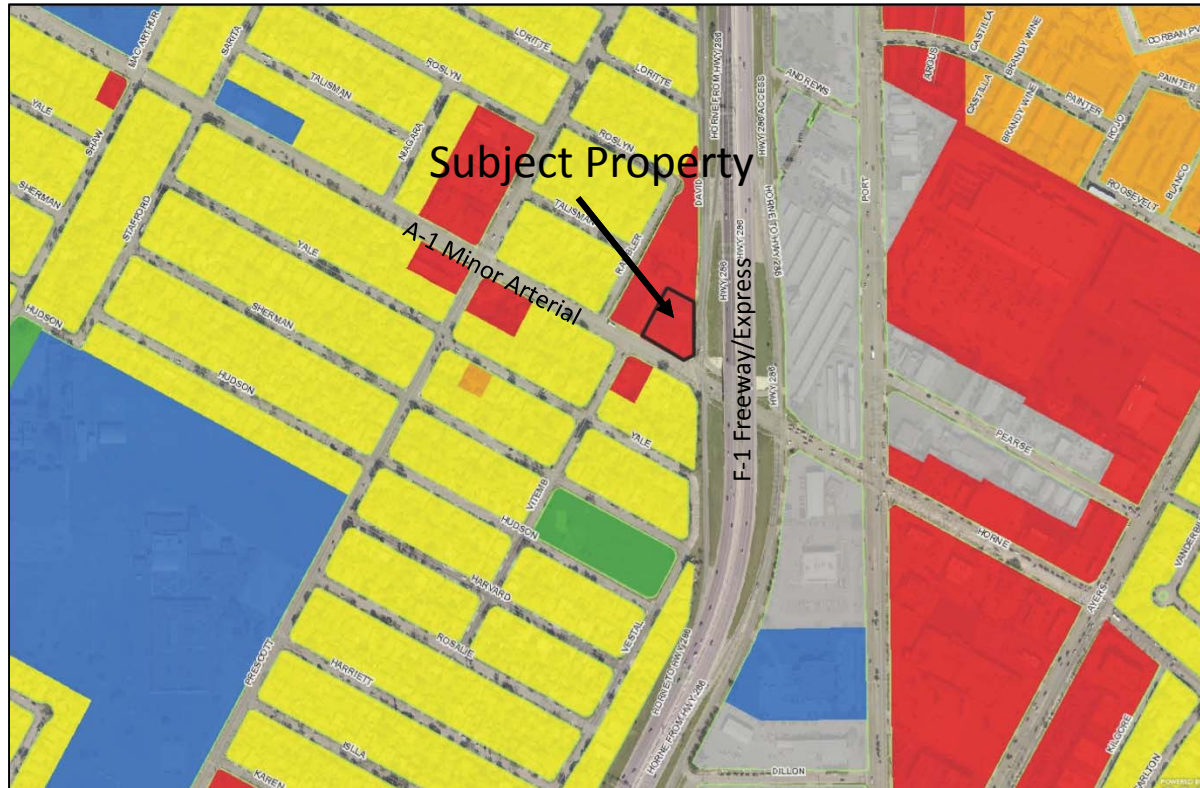


Future Land Use





Future Land Use Map





Subject Property Facing West From Intersection





Subject Property Facing North From Intersection





Across Horne Road From Subject Property



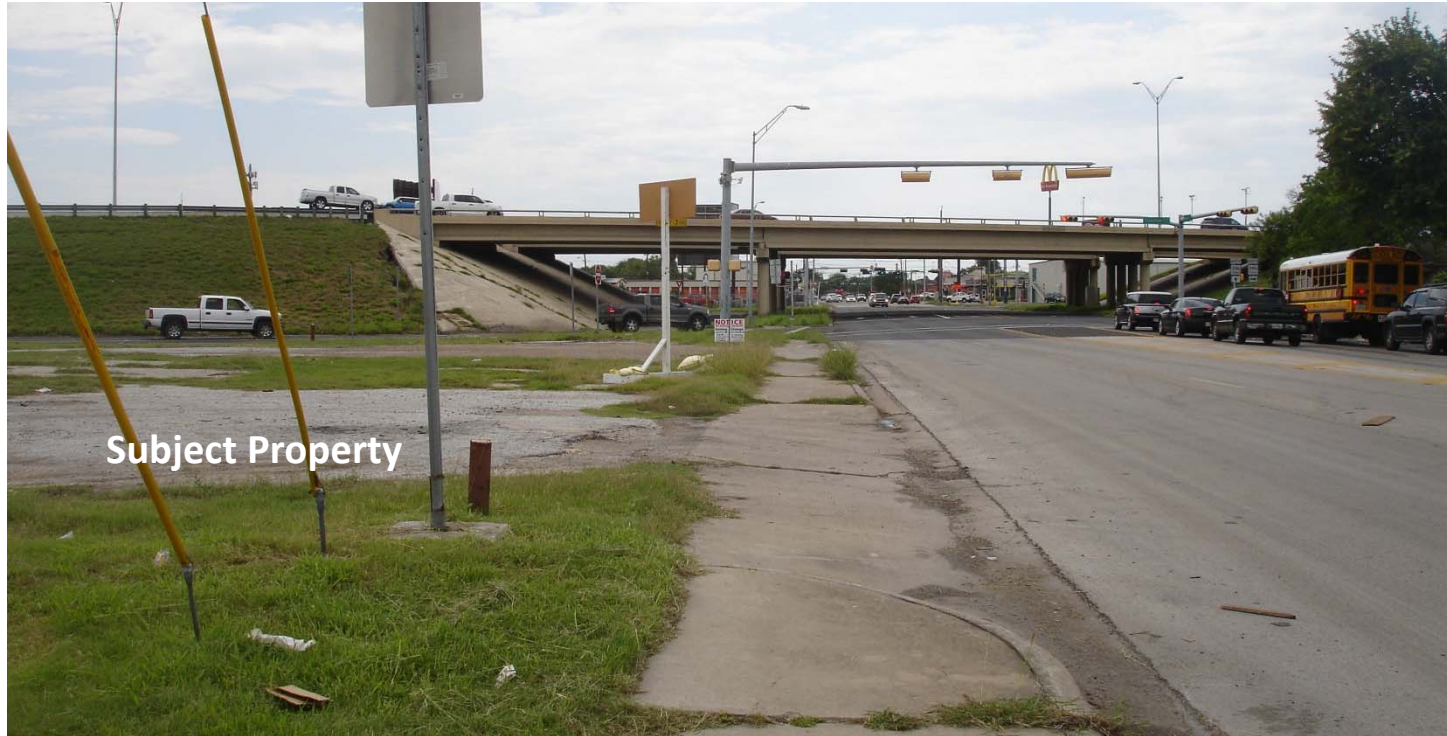


Facing North on Access Road Along Subject Property





Facing East on Horne Road Along Subject Property





Public Notification

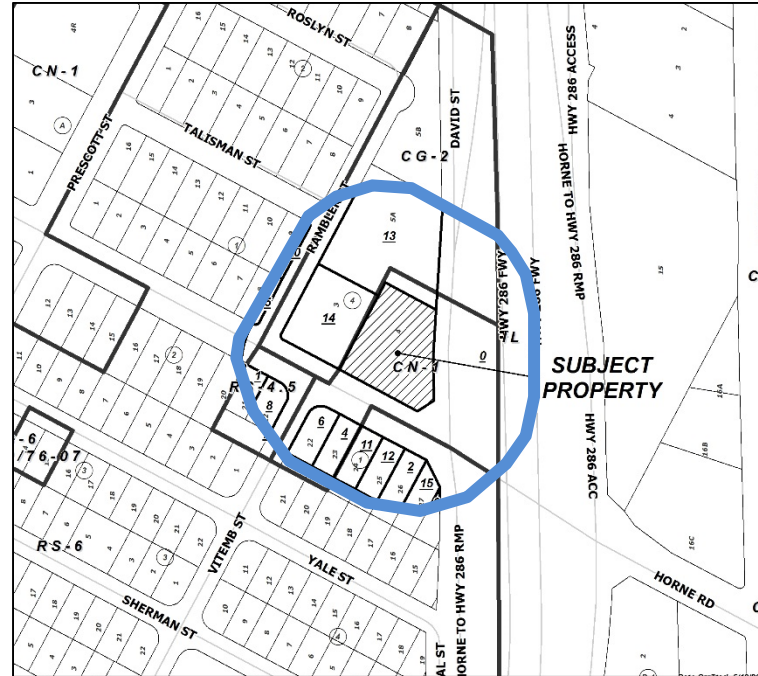
15 Notices mailed inside 200' buffer
5 Notices mailed outside 200' buffer

Notification Area

Opposed: 0 (0.00%)



In Favor: 0





Staff Recommendation

Approval
of the Change of Zoning to the
“CG-2” General Commercial
District