



# Pavement Condition Evaluation Survey & Pavement Management Software System Contract

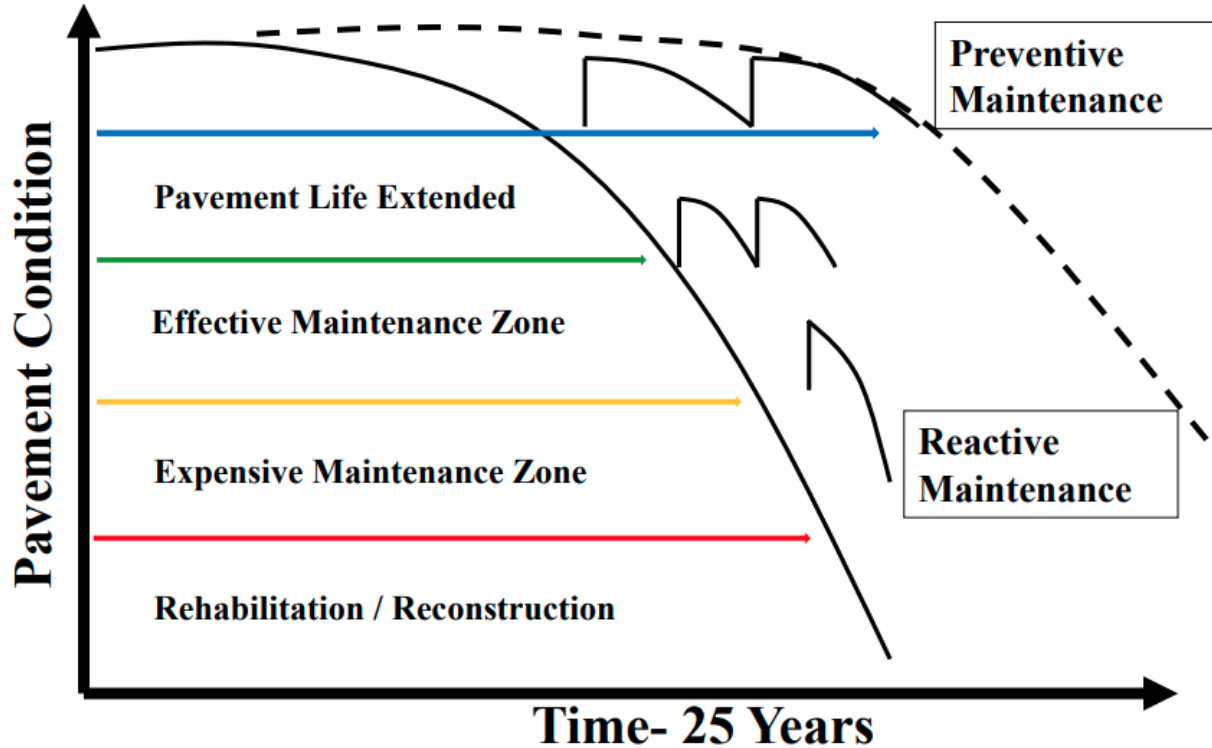
---



Council Presentation  
December 14, 2021

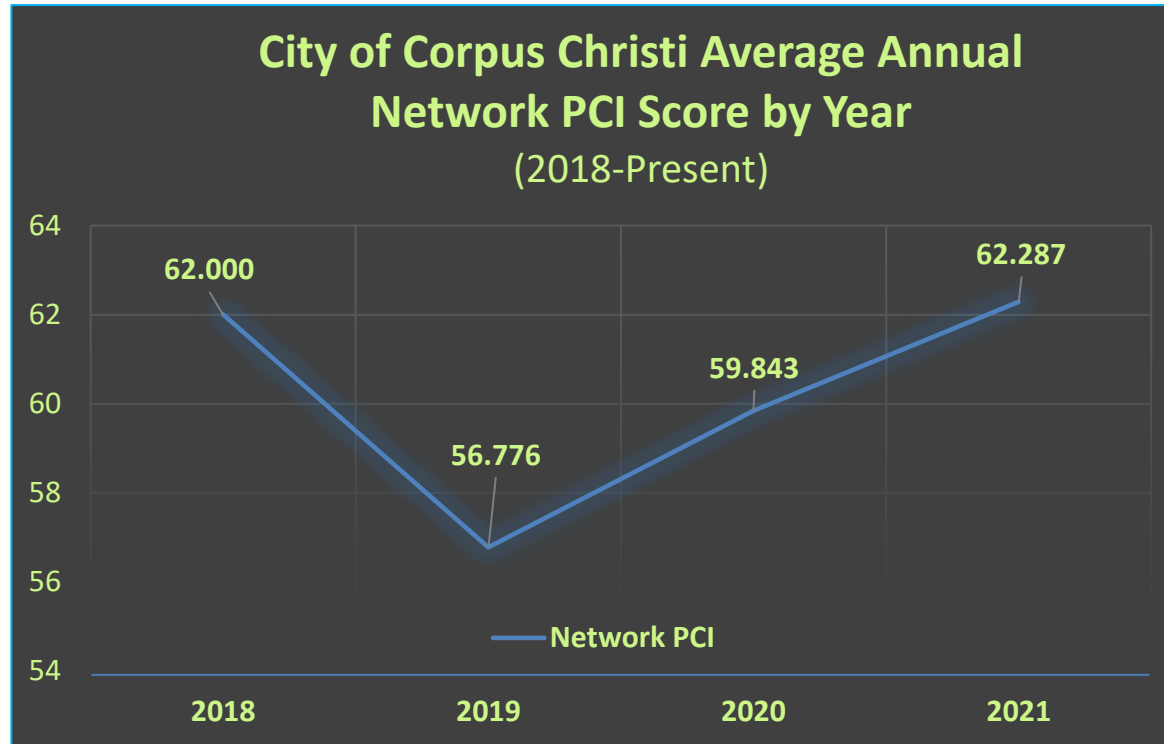


# Optimized Street Maintenance





# Historical PCI Scores





# Pavement Condition Survey, Assessment, & Indexing



- Pavement Condition Index (PCI) – numerical grade given to each street indicating its level of deterioration.

PCI Score (0-100)	Street Maintenance Type & Applications
71 - 100	<b>Preventative Maintenance</b> – Ultra Thin Overlays & Pothole Repairs
56 - 70	<b>Preventative Maintenance</b> – Overlays, Base & Pavement Repairs, and Minor Street Improvements
35 - 55	<b>Rehabilitation</b> – 3-6" depth Mill & Asphalt Overlay
0 - 34	<b>Reconstruction &amp; Reclamation</b> – Full depth (8-12") structural base replacement & 2-3" Asphalt Overlay

- Industry-accepted standard is to conduct a new pavement condition survey & assessment every 3 years.
- Last pavement condition survey & assessment completed in 2018



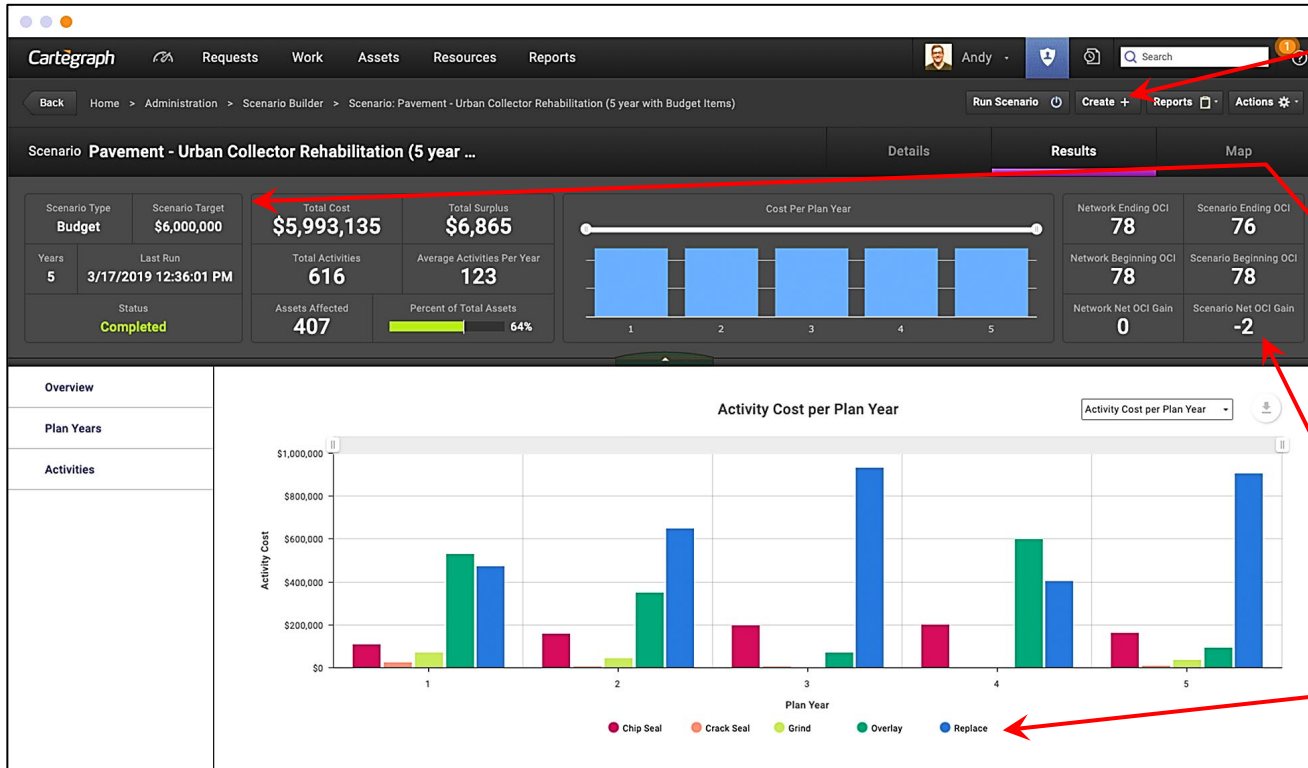
# Project Scope



- Survey and assess all streets and roadways in the Corpus Christi Street Network (est. 1,210 linear miles)
- Calculate a Pavement Condition Index (PCI) score for every street segment in the Corpus Christi Street Network
  - 1,210 linear miles = 12,888 street segments
- Inventory City transportation facilities located in the ROW:
  - \* *Pavement Widths*
  - \* *Curb & Gutter facilities*
  - \* *Pavement Markings*
  - \* *Improved Alleys (19 mi)*
  - \* *Sidewalks*
  - \* *Pavement Striping*
  - \* *Guardrails*
  - \* *Sidewalk Ramps*
  - \* *Street Signs*
- Implement Cartegraph Asset Management Software



# Cartegraph Asset Management Software



Pavement Scenario Builder / Customization

Budgeting Tool

Scenario's Impact on Network PCI Score

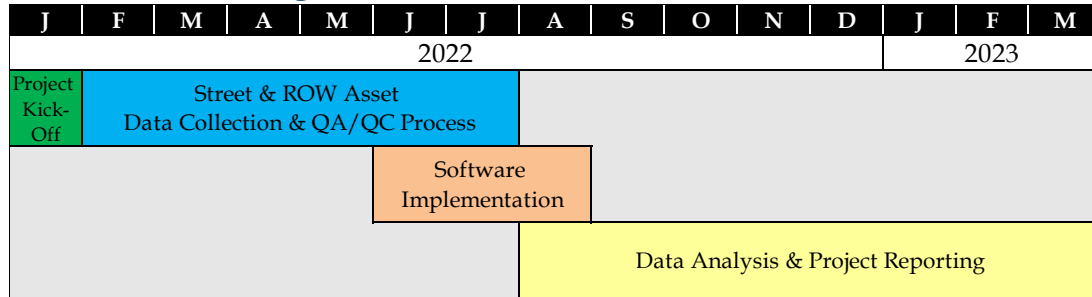
Street Maintenance Application Planning



# Project Timeline



- Estimated 15-month project timeline (Jan. 2022 – Mar. 2023)
- PCI data will be collected and available for Staff's use in the FY 2023 budget process - FY 2026 IMP development.
  - ✓ Phase 1 – Project Management & Coordination – Kick-Off
  - ✓ Phase 2 – Data Collection & QA/QC
  - ✓ Phase 3 – Cartegraph Software Implementation & Staff Training
  - ✓ Phase 4 – Project Reporting / PW Staff's Use of Data in FY 2023 Budget Process





# Department of Public Works

---



Questions?