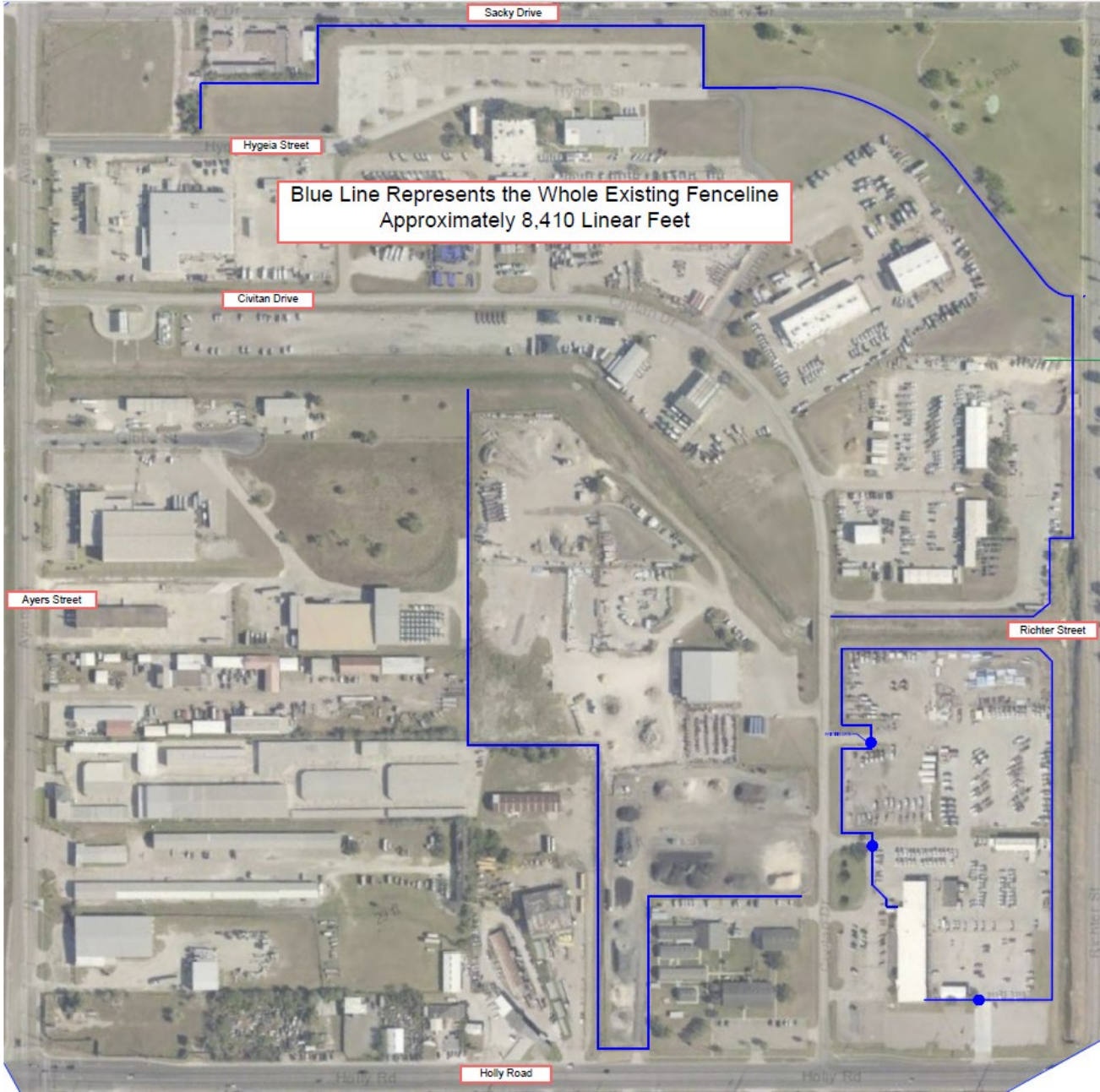




ASSET MANAGEMENT SERVICE CENTER SECURE ENCLAVE

COUNCIL PRESENTATION: MAY 12, 2026

A.M. SERVICE CENTER SECURE ENCLAVE (Existing)

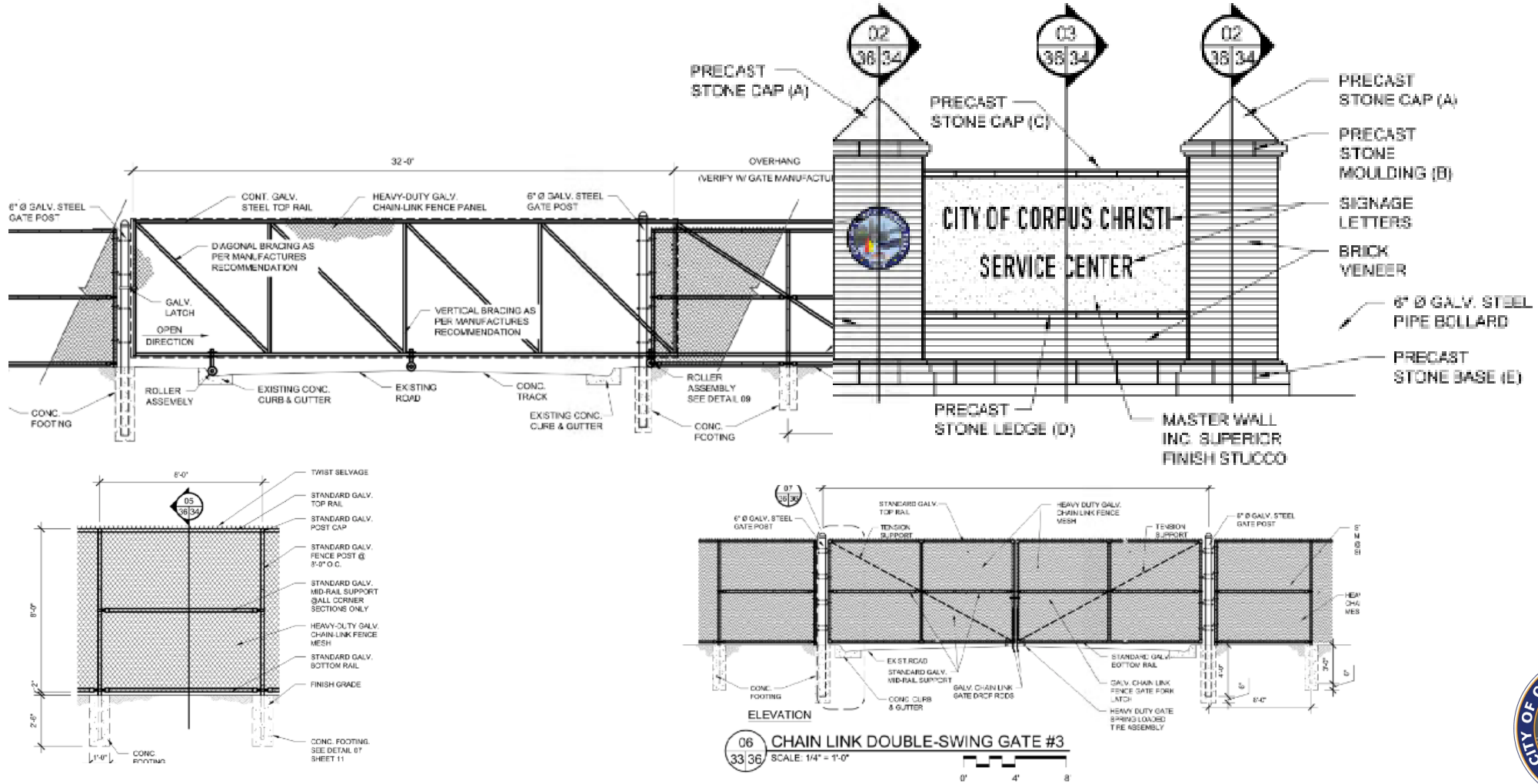


A.M. SERVICE CENTER SECURE ENCLAVE (New Work)

After construction the total
Linear Feet Surrounding the
Service Center Will be 10,600 LF.



A.M. SERVICE CENTER SECURE ENCLAVE Gate Entrance Designs and Fence Design



PROJECT SCOPE

A.M. SERVICE CENTER SECURE ENCLAVE

- Install a new 8-foot-high perimeter chain-link fence, with controlled-access gates at three primary entry points and a monumental gate at the Holly Road entrance. This will replace the existing 7' fence (6' Fence with 1' of barbed wire) on the top. The new 8' fence will not have barbed wire for a more aesthetically pleasing appearance.
- The project includes approximately 8,700 linear feet of new chain-link fencing.
- The intent is to establish a secure perimeter around the service center to safeguard taxpayer-funded assets and prevent disruptions to City services caused by unauthorized access or tampering with vehicles and equipment.



PROJECT SCHEDULE

POLICE TRAINING ACADEMY GENERATOR

2024 - 2025	2025 - 2026	2026
May - August	August - May	June - November
Design	Bid/Award	Construction

The projected schedule reflects a City Council construction award in May 2026, with anticipated completion of construction by November 2026.





Thank you!