

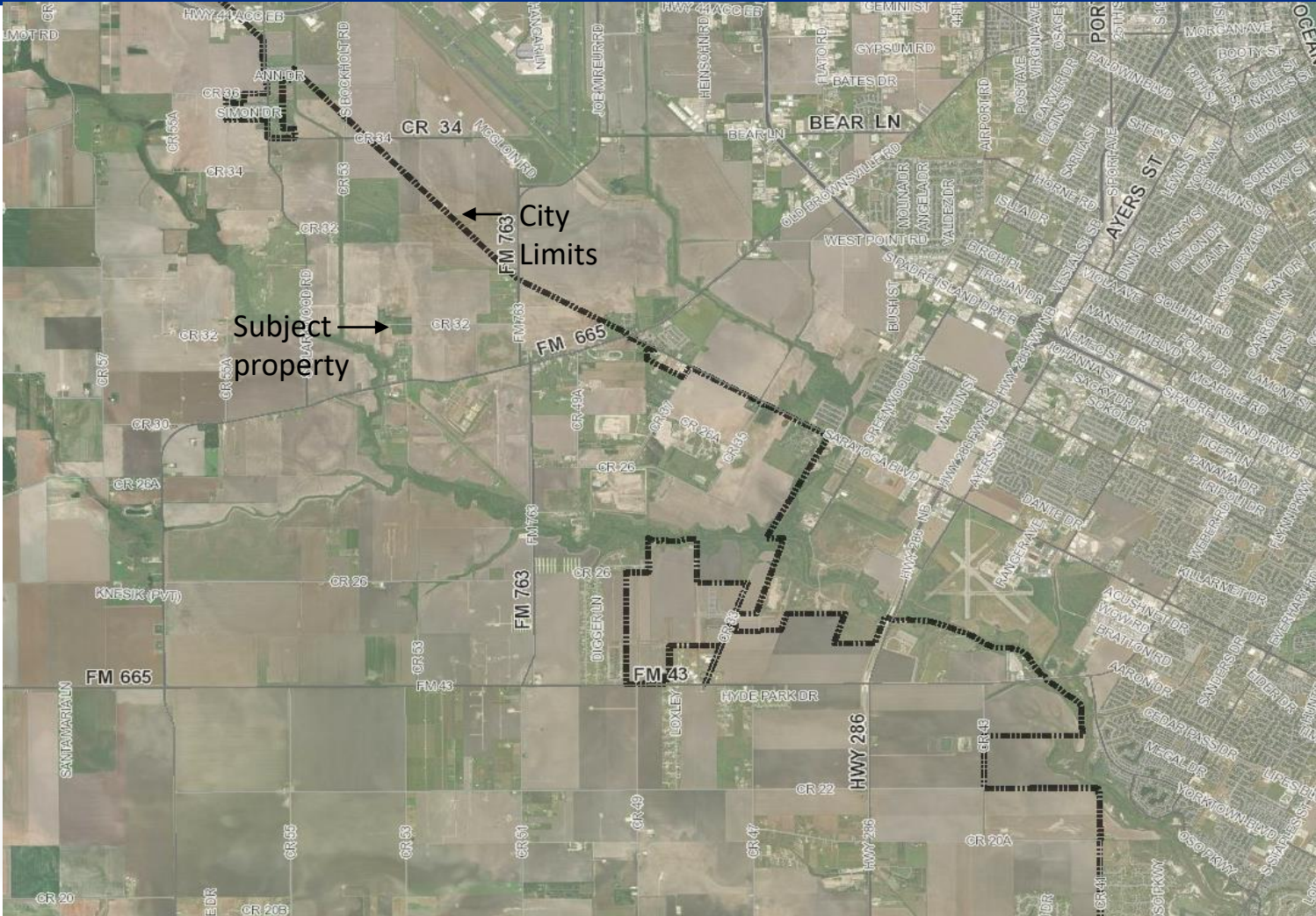
OUTSIDE CITY LIMITS WATER CONTRACT

J and N Hill Country Investments, LLC

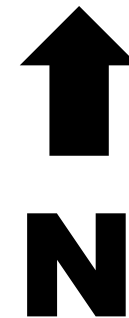
1851 CR 32

City Council Presentation
September 21, 2021

VICINITY MAP



AERIAL MAP



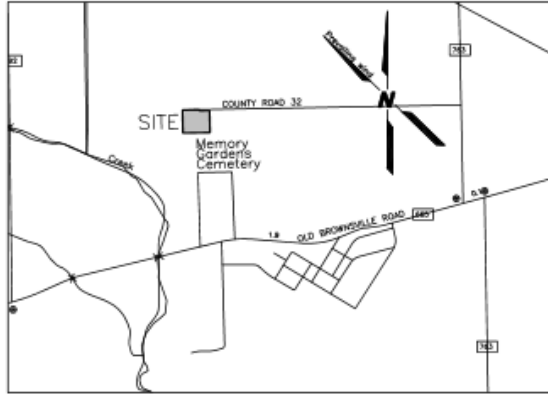
STAFF RECOMMENDATION

Approval

**This request is in compliance with the City Code of Ordinances
Sections 55-111-113**



PLAT



LOCATION MAP
SCALE: 1" = 2000'

STATE OF TEXAS §
COUNTY OF NUECES §

I, NICOLE HALE, MEMBER, HEREBY CERTIFY THAT J & N HILL COUNTRY INVESTMENTS, LLC IS THE OWNERS OF THE PROPERTY SHOWN HEREON, FREE OF ALL LEINS, THAT THEY HAVE HAD SAID PROPERTY SURVEYED AS SHOWN FOR THE PURPOSES OF DESCRIPTION AND DEDICATION. ALL UTILITY EASEMENTS AND RIGHTS-OF-WAY ARE DEDICATED TO THE PUBLIC FOR THE OPERATION & MAINTENANCE OF PUBLIC STREETS AND UTILITIES. THIS THE DAY _____ OF _____, 2021.

NICOLE HALE, MEMBER

XREF: BASE

PLAT OF
**HALE HORSE RANCH
BLOCK 1 LOT 1**

BEING A PLAT OF A 1.64 ACRE TRACT OF LAND OUT OF A 6.55 ACRE TRACT DESCRIBED IN A DEED RECORDED IN DOCUMENT # 2021009319 DEED RECORDS NUECES COUNTY TEXAS OUT OF A 212.72 ACRE TRACT DESCRIBED IN A DEED RECORDED IN VOLUME 314 PAGE 632 DEED RECORDS NUECES COUNTY TEXAS

STATE OF TEXAS §
COUNTY OF NUECES §

APPROVED BY THE CORPUS CHRISTI-NUECES COUNTY HEALTH DEPARTMENT. THIS THE _____ DAY OF _____, 2021. ANY PRIVATE SEWAGE SYSTEM SHALL BE APPROVED BY THE CORPUS CHRISTI-NUECES COUNTY HEALTH DEPARTMENT PRIOR TO INSTALLATION.

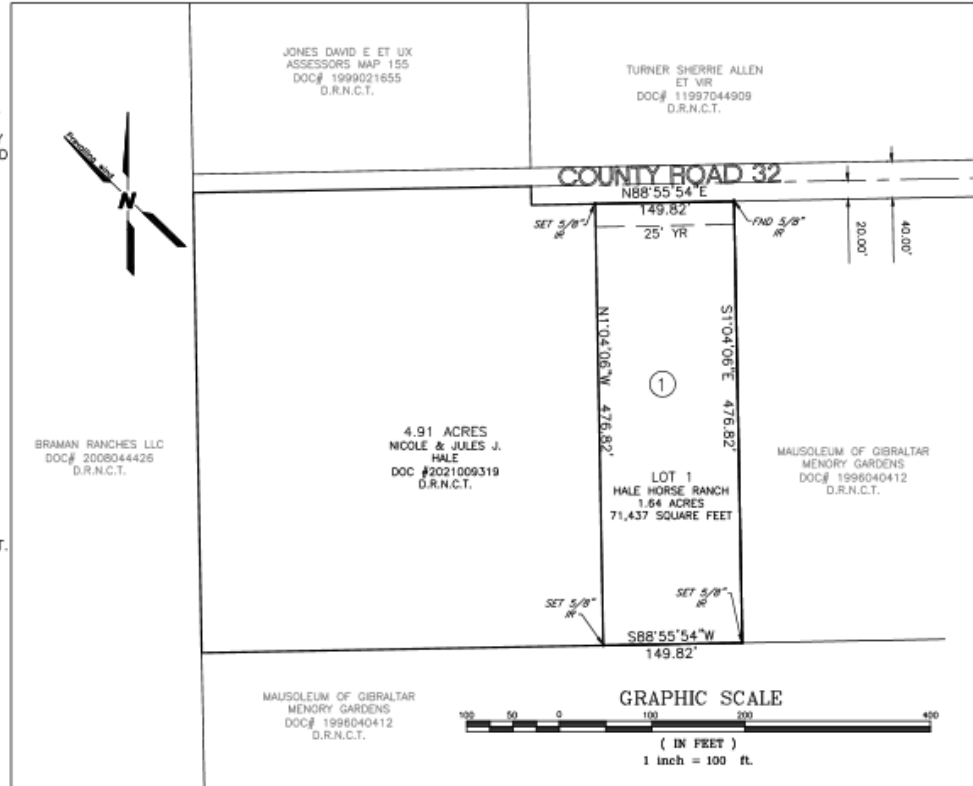
PUBLIC HEALTH ENGINEER

STATE OF TEXAS §
COUNTY OF NUECES §

THE FINAL PLAT OF THE HEREIN DESCRIBED PROPERTY WAS APPROVED BY THE DEPARTMENT OF DEVELOPMENT SERVICES OF THE CITY OF CORPUS CHRISTI, TEXAS

JONES DAVID E ET UX
ASSESSORS MAP 155
DOC# 1999021855
D.R.N.C.T.

TURNER SHERRE ALLEN
ET VIR
DOC# 11997044909
D.R.N.C.T.



MAUSOLEUM OF GIBALTAR
MENORY GARDENS
DOC# 1996040412
D.R.N.C.T.

STATE OF TEXAS §
COUNTY OF NUECES §