

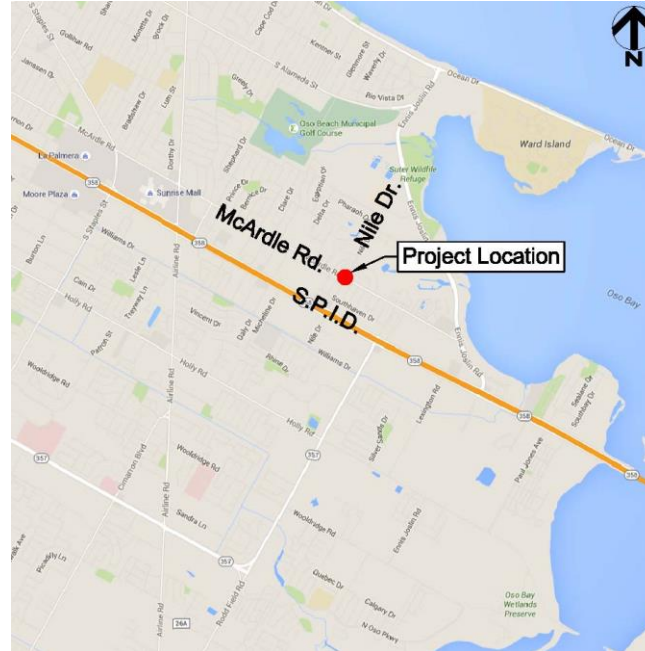
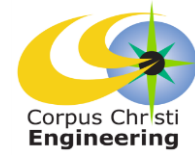
**McArdle Road Improvements
Whitaker Drive to Nile (Phase 1)
Nile to Ennis Joslin (Phase 2)
BOND 2012**



**Council Presentation
March 8, 2016**

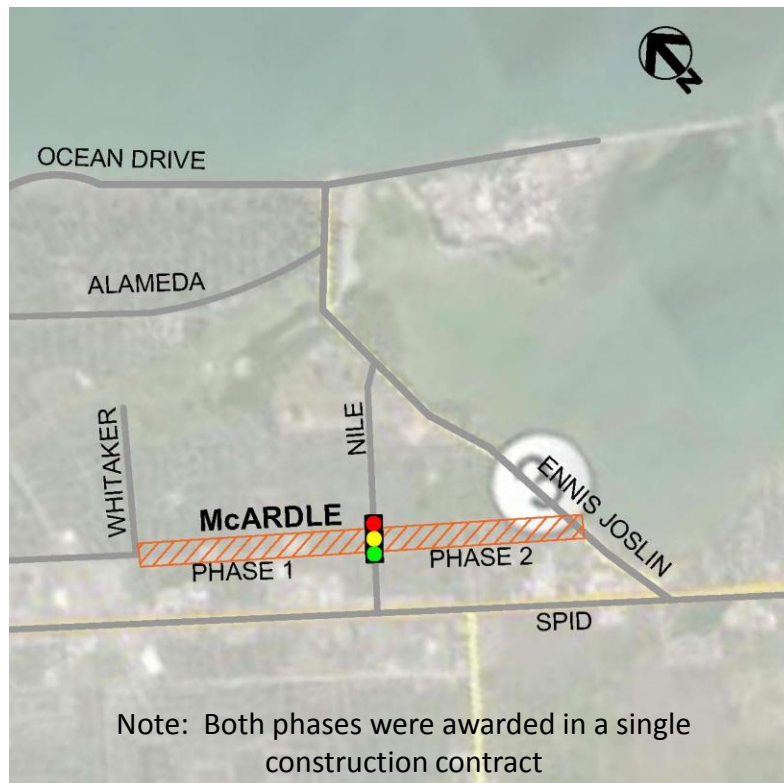


Vicinity Map



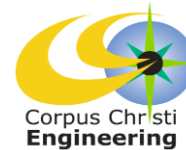


Location Map





Project Scope



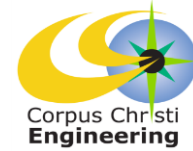
New 4-way Traffic Signal at the McArdle & Nile intersection. The new signal is part of the Bond 2014 Traffic and Lighting Improvements (City-wide). The new signal includes:

- New foundations, poles and mast arms at all four corners
- New signal heads (lights), controller cabinet, and conduits
- New pedestrian poles and controller
- New pavement markings

Added by Change Order to the ongoing McArdle Street Road project (Bond 2012) to minimize construction impacts to the local community, avoid future utility cuts to new the roadway and reduce overall cost for signal construction.



Project Schedule



| 2013 | | | | 2014 | | | | 2015 | | | | 2016 | | |
|--------|----|----|----|------|--------------|----|----|------|----|----|----|------|----|----|
| Q1 | Q2 | Q3 | Q4 | Q1 | Q2 | Q3 | Q4 | Q1 | Q2 | Q3 | Q4 | Q1 | Q2 | Q3 |
| Design | | | | Bid | Construction | | | | | | | | | |

Project Estimate: 851 Calendar Days \approx 29 Months