

**City of Corpus Christi
Engineering Services
Change Order**



CHANGE ORDER NO.:	3	CHANGE ORDER DATE:	4/9/2018
PROJECT:	Airport Operations Area Perimeter Fencing	PROJECT NUMBER:	E15221
CONTRACTOR:	B.E. Beecroft Company, Inc.	CONTRACT TIME (CD):	355
ENGINEER:	Garver, LLC		

Make the following additions, modifications or deletions to the work described in the Contract Documents:
Part A - Base Bid

New Items:				
CO3-01	<i>Electrical</i>	Install Base Server and 100 TB Network Video Recorder	1 LS @ \$30,359.34	\$30,359.34
CO3-02	<i>Electrical</i>	Professional Services limiting downtime during fail over	1 LS @ \$920.00	\$920.00
CO3-03	<i>Electrical</i>	Redundant recording with existing cameras	1 LS @ \$15,829.75	\$15,829.75
CO3-04	<i>Electrical</i>	Install KVM 8 port with monitor, keyboard, and mouse	1 LS @ \$1,953.85	\$1,953.85
CO3-05	<i>Electrical</i>	Replace Analog Cameras with New Digital cameras with network upgrades	1 LS @ \$177,288.08	\$177,288.08

Net Total of This Change Order **\$226,351.02**

Why was this Change necessary:

Additional scope added to the project via FAA concurrence which includes installing new base server (Seneca X1000 Utility Server) with 100 TB network video recorder, professional services to limit downtime during fail over, license and configuration for redundant recording with cameras, install KVM 8 port with monitor, keyboard, and mouse, and replace existing analog cameras with new digital cameras with network upgrades.

All work shall be completed within 60 calendar days of the date of this change order. Upon execution, Contractor agrees to have all materials ordered and on site within 50 calendar days and installation/construction will be completed within 10 calendar days from receipt of the equipment.

How can similar changes be avoided in the future?

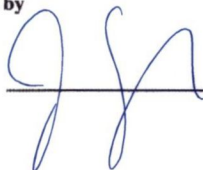
Not applicable since this was requested addition to scope of contract.

The compensation agreed upon in this Change Order is full, complete and final payment for all costs the Contractor may incur as a result of or relating to this change whether said costs are known, unknown, foreseen or unforeseen at this time, including without limitation, any cost for delay, extended overhead, ripple or impact cost, or any other effect on changed or unchanged work as a result of this Change Order.

Original Contract Amount	\$ 6,681,780.30
Previously Approved Change Order Amount	\$140,190.57
Proposed Change Order Amount	\$226,351.02
Revised Contract Amount	\$ 7,048,321.89
Percent of Total Change Orders (including this CO)	5.49%
Previously Approved Weather Days (Through March 31)	22
Previous Change Order Contract Time	95 CD
Additional Time on This Change Order	60 CD
Revised Contract Time	532 CD

Recommended by
Garver, LLC.

By

 4/9/18
Date

Recommended by: Kent Power, P.E. Date
Acting Construction Engineer

Recommended by: Jeffrey Edmonds, P.E. Date
Director of Engineering Services

Recommended by: Eddie Houlihan, Director Date
Management and Budget

Recommended by: Aimee Alcorn-Reed Date
City Attorney

Approved by
B.E. Beecroft Company, Inc.

By

 04/09/18
Date

Approved by: Fred Segundo Date
Director of Aviation

Approved by: Valerie H. Gray, P.E. Date
Executive Director of Public Works

Approved by: Mark Van Vleck Date
Assistant City Manager

Approved by: Margie C. Rose Date
City Manager

RECEIVED

APR 10 2018

Construction Inspection

**CORPUS CHRISTI INTERNATIONAL AIRPORT
 AIRPORT OPERATIONS AREA PERIMETER FENCING
 ESTIMATE OF COST
 NEW SERVER - OPTION 2_REVISION 3**

ITEM NO.	SPEC. NO.	DESCRIPTION	UNIT	QUANTITY	UNIT PRICE	AMOUNT
1		BASE SERVER - SENECA X1000 UTILITY SERVER	EA.	1	\$ 1,913.89	\$ 1,913.89
2		NETWORK VIDEO RECORDER WITH 100 TB	EA.	1	\$ 17,544.45	\$ 17,544.45
3		INSTALLATION	EA.	1	\$ 10,901.00	\$ 10,901.00

Total \$ 30,359.34

OPTIONS:

- | | |
|--|--|
| 1.) Additional time from Professional Services to assist with limiting downtime during fail over | Add to total above \$ 920.00 |
| 2.) Additional redundant recording with existing cameras and cameras installed within the original scope of work | |
| | License \$ 13,759.75 |
| | Configuration <u>\$ 2,070.00</u> |
| | Add to total above \$ 15,829.75 |
| 3.) Additional rackmount KVM 8 port with monitor, keyboard, mouse. Tripp lite with cables | Add to total above \$ 1,953.85 |

DETAILS:

Base Server:

Seneca X1000 Utility Server
 SENECA-BRANDING Brand systems with Seneca logo 1.00
 6EU-00009 MS Win10 IoT Enterprise 2016 LTSB Value for Embedded 4o4 1.00
 DSS-CUSTOM-SETTINGS DSS Custom System Configuration Settings 1.00
 PRIME-B250M-C/CSM mATX B250M S1151 DDR4 DP HDMI DVI VGA M.2 1.00
 RED-DEPOT Desktop Next Business Day Parts Warranty 1.00
 84H342310-001 20 Inch Rail Kit for RM24200 1.00
 ATX-4P-EX 12" ATX12V 4Pin to 4Pin CPU Power 1.00
 RM24200-L2 2U Rackmount no PS mATX 2x 5.25 Ext Drive Bay 1.00
 SS-350ES 350 Watt 80 Plus Power Supply 1.00
 XCONNECT xConnect Management Software 1.00
 BX80677I37100 Intel Core i3-7100 3.9GHz S1151 1.00
 334250-001 Designed for Intel Core i3 7th Generation Small 1.00
 AVW641GU67J5213N2-SA 8GB DDR4 2133MHz, CL15, 1.2v, 2Rx8 1G x 64 DIMM 1.00
 ST1000DM010 1.0TB 7200RPM 64MB SATA3 1.00
 EXPI9301CT Intel Gigabit Pro Ethernet PCI-Express 1.00
 C01-SENECA-025 Serial Port Header Cable - DB9 - EVEREX 1.00
 920-002565 Logitech MK120 USB Keyboard Mouse Combo 1.00
 DEPOT-SERVER 3 Year Depot Server Warranty 1.00
 SDNBD8X5NVR0203Y 3 Year 24x7 Phone and 8x5 NBD Onsite Support 1.00

NVR with 100TB:

Network Video Recorder 200 Series
 P10S-MWS/IPMI-O ASUS mATX Intel C236 DDR4 SATA RAID with ASMB8 1.00
 RED-DEPOTSV Server Red Depot Parts Warranty 1.00
 SENECA-BRANDING Brand systems with Seneca logo 1.00
 6EU-00008 MS Win10 IoT Enterprise 2016 LTSB High End for Embedded 4o4 1.00
 NVR200S-QS NVR200S Quick Start Guide 1.00



XCONNECT xConnect Management Software 1.00
RM23612E3-SD1 2U Rackmount 875w RPS 12G 12x Hotswap Trays 1.00
XNVR200-12-CERT XNVR200-12 Certification Label 1.00
XNVR-CERT-PWRLBL XNVR Power Label 1.00
XNVR-CERT-SLIDELBL XNVR Slide Warning Label 1.00
BX80677E31245V6 Intel Quad Core Xeon E3 1245V6 3.7GHz S1151 1.00
KVR24E17S8/8 8GB DDR4 2400MHz ECC Unbuffered 2.00
SSDSC2KB240G701 240GB S4500 Series SSD SATA 2.00
RAID1 Configure To RAID Level 1 1.00
ST10000NM0086 10TB SATA 7200rpm 3.5 Inch 128MB 10.00
RAID5 Configure To RAID Level 5 1.00
05-25716-00 LSI MegaRAID 9380-8i8e PCI-Express 3.0 1.00
214343-1000MM SFF8643 to SFF8643 SAS 12G Cable, 1m 1.00
CVPM02 LSI Cachevault Power Module 1.00
I210T1BLK Intel I210 PT Server Adapter 1.00
920-002565 Logitech MK120 USB Keyboard Mouse Combo 1.00
DEPOT-SERVER 3 Year Depot Server Warranty 1.00
SDNBD8X5NVR1003Y 3 Year 24x7 Phone and 8x5 NBD Onsite Support 1.00

Storage Expansion Kit:

STORAGE EXPANSION KIT NOT NEEDED WITH OPTION 2

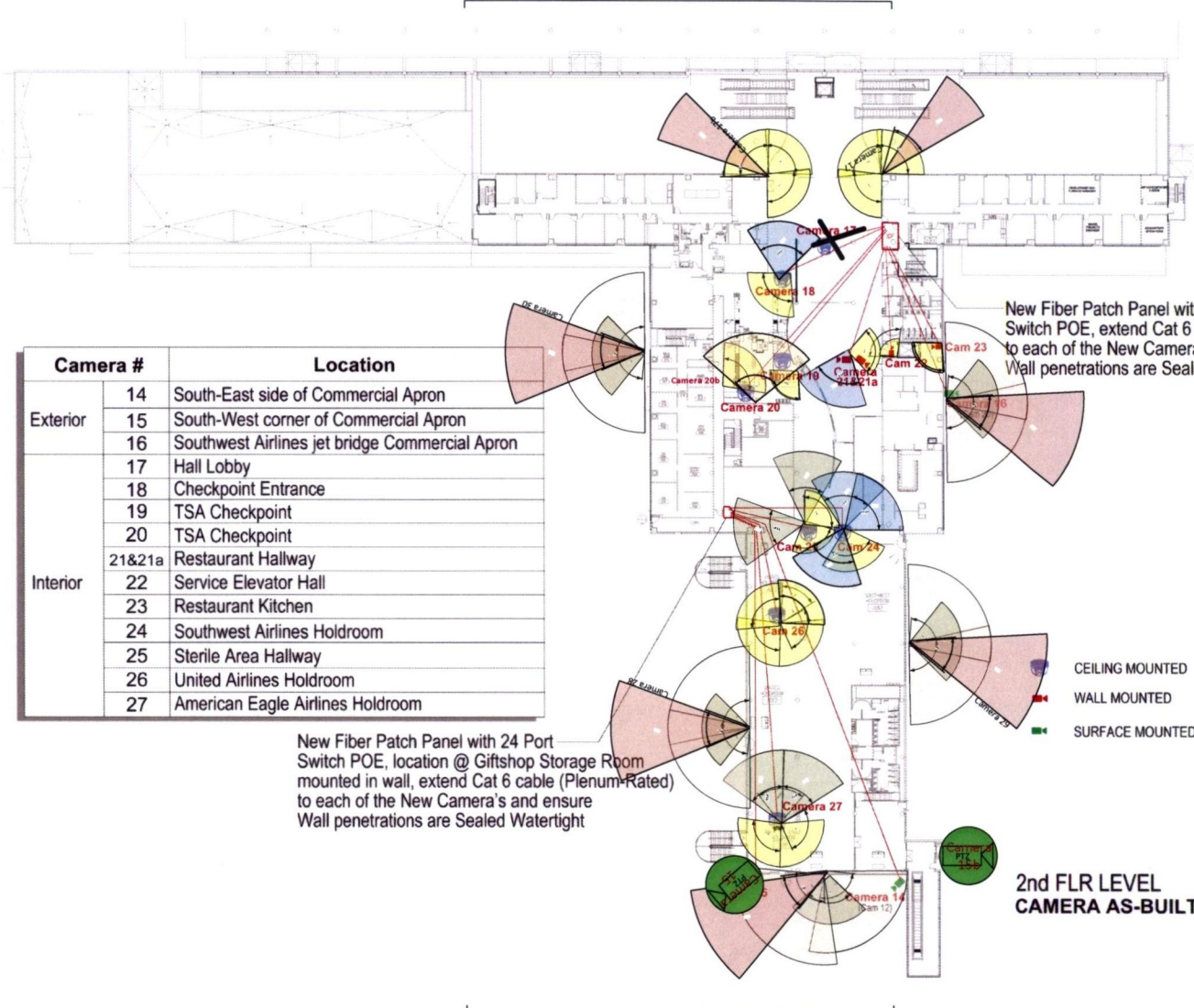
CORPUS CHRISTI INTERNATIONAL AIRPORT
AIRPORT OPERATIONS AREA PERIMETER FENCING
ESTIMATE OF COST
REPLACE ANALOG CAMERAS WITH NEW DIGITAL CAMERAS_REVISION 1

ITEM NO.	SPEC. NO.	DESCRIPTION	UNIT	QUANTITY	UNIT PRICE	AMOUNT
1		REPLACE EXISTING ANALOG CAMERAS WITH NEW DIGITAL CAMERAS	LS.	1	\$ 144,081.71	\$ 144,081.71
2		NETWORK UPGRADES FOR NEW CAMERAS	LS.	1	\$ 33,206.38	\$ 33,206.38

Total \$ 177,288.08

*See attached for camera location, count, lens configuration and cable length.

Location Name	Camera Location	Camera Type	lens counts	AV2023ERS (3.3-6.6mm)	AV1231ERS (2.8-6mm)	AV2022 60N-NL	AV1227 60N-NL	AV6656 60N-NL	AV3580 Pelco PZ	ONSSI Camera	ONSSI Video	Wall License	2.4mm	4mm	8mm	12mm	16mm	No Lens	Wall Mount	Pendant	CAP	Incelline Mount	Cable Length	Special Cont.
Camera 1		Multi Lens	4							1		No Charge	1						1	1	1			165
Camera 2		Multi Lens	4							1		No Charge							1	1	1			100
Camera 3		Multi Lens	4							1		No Charge							1	1	1			100
Camera 4	outdoor terminal pole street	Multi Lens	4							1		No Charge							1	1	1			100
Camera 5	outdoor terminal door	Multi Lens	4							1		No Charge	1						1	1	1			100
Camera 6	baggage	Multi Lens	4							1		No Charge							1	1	1			100
Camera 7	outside dispatch	Multi Lens	4							1		No Charge							1	1	1			100
Camera 8		Multi Lens	4							1		No Charge							1	1	1			100
Camera 9		Dual Lens	2							1		No Charge							1	1	1			140
Camera 10		Dual Lens	2							1		No Charge							1	1	1			100
Camera 11		Dual Lens	2							1		No Charge							1	1	1			125
Camera 12		Dual Lens	2							1		No Charge							1	1	1			150
Camera 13		Single Lens	1							1		No Charge							1	1	1			125
Camera 14		Multi Lens	4							1		No Charge							1	1	1			175
Camera 15		PZ	1							1		No Charge							1	1	1			125
Camera 15b		PZ	1							1		No Charge							1	1	1			285
Camera 16		Multi Lens	4							1		No Charge							1	1	1			328
Camera 17		Multi Lens	4							1		No Charge							1	1	1			300
Camera 17b		Multi Lens	4							1		No Charge							1	1	1			150
Camera 18		Dual Lens	2							1		No Charge							1	1	1			100
Camera 19		Single Lens	1							1		No Charge							1	1	1			300
Camera 20		Single Lens	1							1		No Charge							1	1	1			185
Camera 20b		Single Lens	1							1		No Charge							1	1	1			175
Camera 21a		Dual Lens	2							1		No Charge							1	1	1			175
Camera 21b		none	1							1		No Charge							1	1	1			125
Camera 22		Single Lens	1							1		No Charge							1	1	1			125
Camera 23		Single Lens	1							1		No Charge							1	1	1			145
Camera 24		Multi Lens	4							1		No Charge							1	1	1			150
Camera 25		Multi Lens	4							1		No Charge							1	1	1			100
Camera 26		Multi Lens	4							1		No Charge							1	1	1			125
Camera 27		Multi Lens	4							1		No Charge							1	1	1			275
Camera 28		Multi Lens	4							1		No Charge							1	1	1			150
Camera 29		Multi Lens	4							1		No Charge							1	1	1			200
Camera 30		Multi Lens	4							1		No Charge							1	1	1			125
Totals				91	9	6	2	0	7	6	3	33	0	2	0	0	0	0	0	27	13	6	5348	



	Camera #	Location
Exterior	14	South-East side of Commercial Apron
	15	South-West corner of Commercial Apron
	16	Southwest Airlines jet bridge Commercial Apron
	17	Hall Lobby
	18	Checkpoint Entrance
Interior	19	TSA Checkpoint
	20	TSA Checkpoint
	21&21a	Restaurant Hallway
	22	Service Elevator Hall
	23	Restaurant Kitchen
	24	Southwest Airlines Holdroom
	25	Sterile Area Hallway
	26	United Airlines Holdroom
	27	American Eagle Airlines Holdroom

New Fiber Patch Panel with 24 Port Switch POE, extend Cat 6 cable (Plenum-Rated) to each of the New Camera's and ensure Wall penetrations are Sealed Watertight

New Fiber Patch Panel with 24 Port Switch POE, location @ Giftshop Storage Room mounted in wall, extend Cat 6 cable (Plenum-Rated) to each of the New Camera's and ensure Wall penetrations are Sealed Watertight

- CEILING MOUNTED
- WALL MOUNTED
- SURFACE MOUNTED OUTDOOR

2nd FLR LEVEL
CAMERA AS-BUILT LAYOUT



Google Earth

