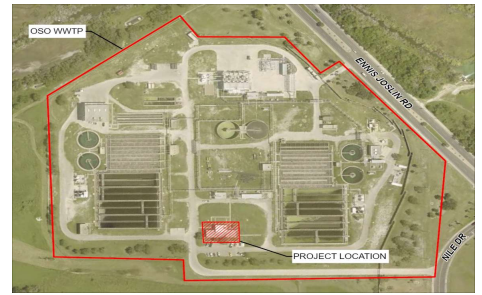


Capital Improvement Plan Project Pages

Corpus Christi, Texas



Project # 23037
Project Name Oso WRP Operation Center

Contact	Director of Corpus Christi Water	Department	Wastewater
Type	Improvement/Additions	Category	Wastewater Treatment
Priority	Priority Level 2	Status	Active
Useful Life	40 years	Council District	4

Description

Oso WWTP was constructed in 1941 and last modified in 2018 has an average annual flow capacity of 16.2 MGD and has a peak flow capacity of 98 MGD. The Oso WWTP services the Oso Service Basin composed of 26 Lift stations. The service basin covers an area from Louisiana Ave. at the northeastern most point to Oso creek at its southwestern most point. Encompassing an area of roughly 38 square miles. The existing operation and control center at the Oso WWTP was built in the 1940s. The limited space cannot meet the operation and maintenance needs. With the increase of staff, advanced SCADA and technology functionalities at the Oso plant, this project is needed to provide necessary working and maintenance spaces and meet the requirements on health and safety. The project will include a new larger wastewater laboratory, and SCADA Control Room.

Justification

Currently the SCADA center and laboratory cannot meet the operational needs and staff do not have adequate workspace, enlarging these facilities will contribute to the plant's overall efficiency and functionality. Meeting regulatory standards and ensuring sustainable wastewater management.

Expenditures	Prior	FY 26	FY 27	FY 28	Total
Construction/Rehab	0	0	3,500,000	0	3,500,000
Eng, Admin Reimbursements	60,000	0	350,000	0	410,000
Design	440,000	0	0	0	440,000
Total	500,000	0	3,850,000	0	4,350,000

Funding Sources	Prior	FY 26	FY 27	FY 28	Total
Revenue Bonds	500,000	0	3,850,000	0	4,350,000
Total	500,000	0	3,850,000	0	4,350,000

Budget Impact

The creation of an operation center will facilitate better and safer working conditions for staff on site. Repairing and upgrading components enhances overall efficiency, reducing long-term operational expenses.