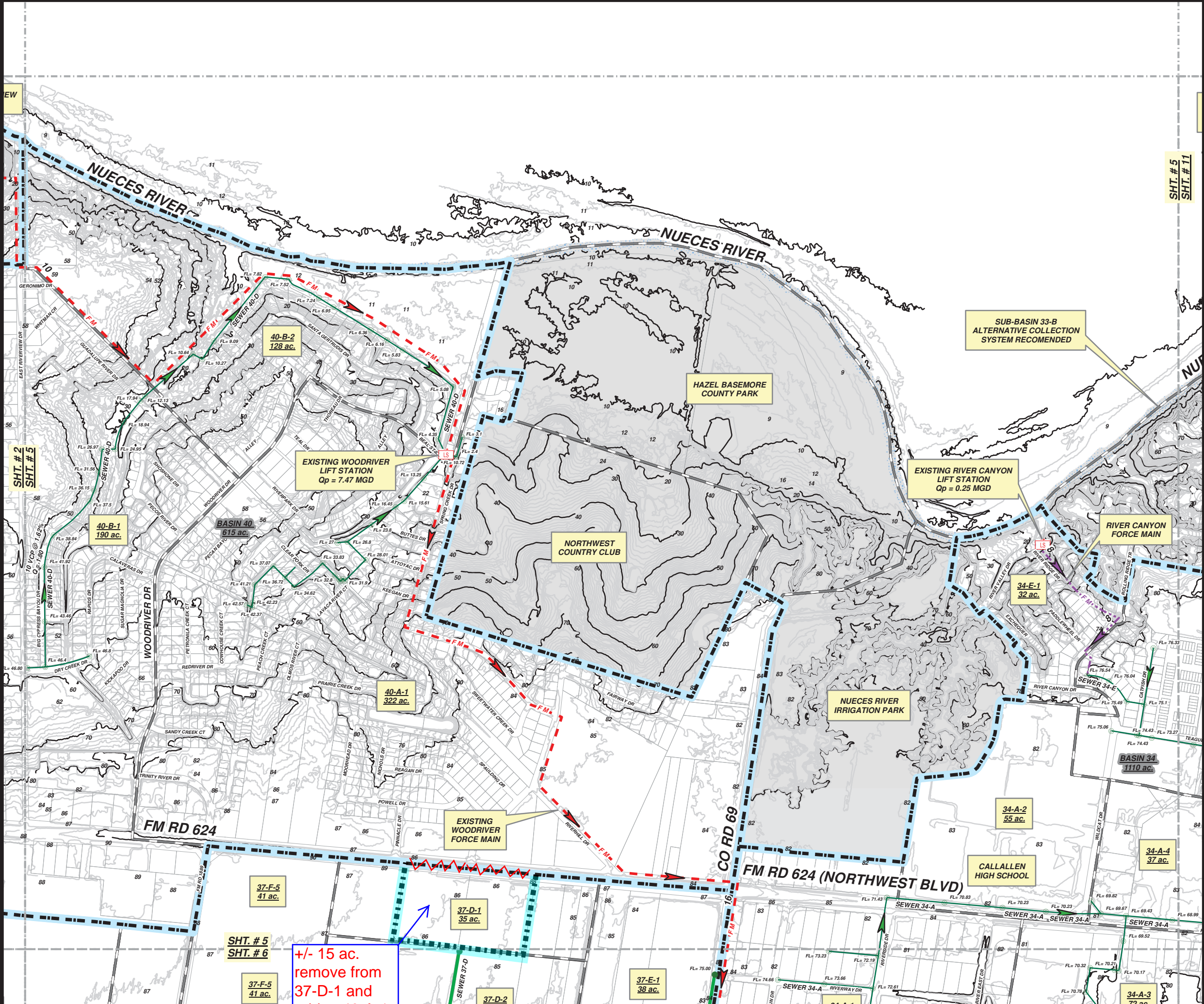
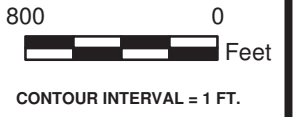




5151 FLYNN PARKWAY  
SUITE 314  
CORPUS CHRISTI, TEXAS 78411  
www.hdrinc.com  
Ph. 361 857-2216  
Fax. 361 857-0509



### Legend

PROPOSED LIFT STATION	EXISTING LIFT STATIONS
PROPOSED FORCE MAINS	EXISTING FORCE MAINS
PROPOSED MANHOLE	EXISTING MANHOLE
PROPOSED SEWER MAIN	EXISTING SEWER MAINS
WASTEWATER SUB-BASIN	WASTEWATER SUB-BASIN
RIVER	RIVER
SUB-BASIN CALL-OUT	SUB-BASIN CALL-OUT
BASIN CALL-OUT	BASIN CALL-OUT
39-C-1 38 ac.	39-C-1 38 ac.
BASIN 38 556 ac.	BASIN 38 556 ac.
8	1' CONTOUR INTERVAL
10	10' CONTOUR INTERVAL
	AREAS NOT IN SERVICE AREA
	Qp = PEAK WASTEWATER FLOWS FOR ULTIMATE DEVELOPMENT (YEAR 2030)
	Qc = CAPACITY OF WASTEWATER COLLECTION LINES

**CITY OF CORPUS CHRISTI TEXAS**  
WASTEWATER DEPARTMENT

**WASTEWATER COLLECTION SYSTEM MASTER PLAN**

ALLISON SERVICE AREA

**WASTEWATER COLLECTION SYSTEM MODEL**

Revised July 2021

**APPENDIX D**

SHEET 5 of 30  
CITY PROJECT # 7236

+/- 15 ac.  
remove from  
37-D-1 and  
add to 40-A-1