

Public Works Department



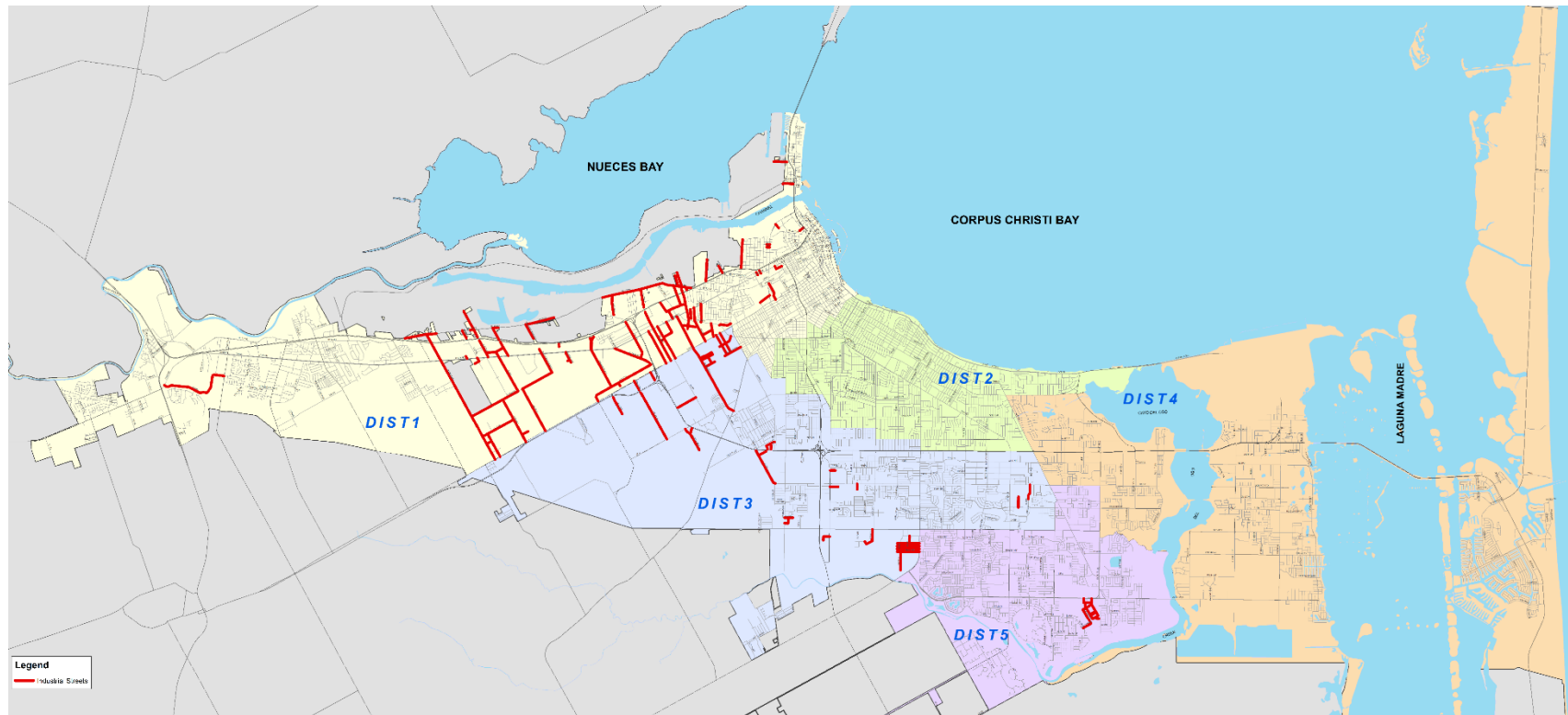
Industrial Streets



Council Briefing
May 14, 2024



Queried Industrial Streets by Land Use (Inside City limits)





Queried Industrial Streets by Land Use (Inside City limits)



- 109 Streets
- 53.2 CL miles
- \$79,000,000 (SPMP cost)
- \$530,000,000 (Bond cost)
 - UTP and IDM standards



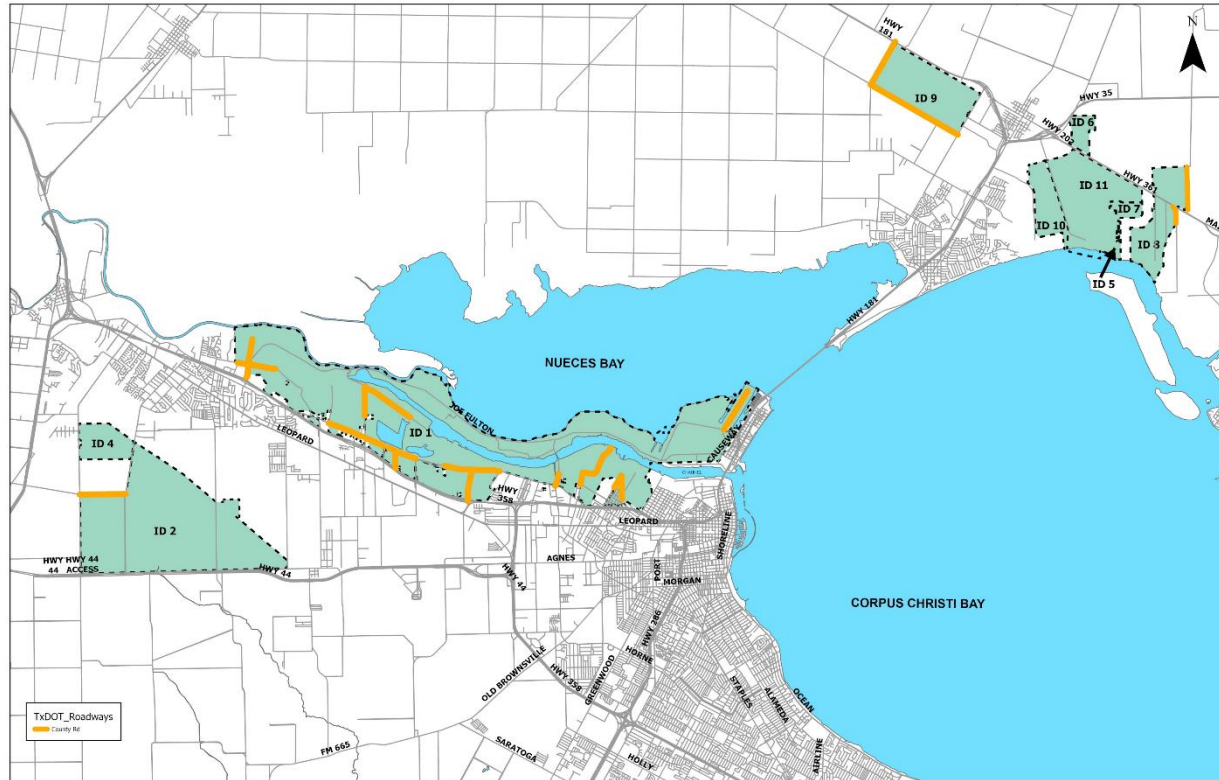
Next Steps



- Some streets identified as Industrial are planned on RPP, Bond and/or Type B
- Public Works has not developed a prioritization plan for Industrial streets
 - Determine budget and funding source
 - Prioritize based on PCI and other factors
 - Determine repair types
 - Create a plan



Industrial Streets in Defined Industrial Districts (OCL)





Industrial Streets in Defined Industrial Districts (OCL)



- 18 Streets
- 16.1 CL miles
- \$24,000,000 (SPMP cost)
- \$172,000,000 (Bond cost)
 - UTP and IDM standards



Next Steps



- Public Works has not developed a prioritization plan for Industrial streets
 - Determine budget and funding source
 - Acquire PCI scores
 - Prioritize based on PCI and other factors
 - Determine repair types
 - Create a plan



Questions?

