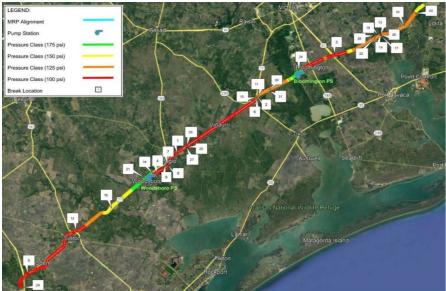


FY 26 thru FY 28

# Capital Improvement Plan

Corpus Christi, Texas



Project #	23027/26054		
Project Name	Mary Rhodes Pipeline Ph 1 Assessment & Improvements / LNRA Facility Expansion		
Contact	Director of Corpus Christi Water	Department	Water
Type	Improvement/Additions	Category	Raw Water Supply
Priority	Priority Level 1	Status	Active
Useful Life	40 years	Council District	Outside City Limits

Description

The City of Corpus Christi owns and operates the Mary Rhodes Phase I (MRP I) pipeline for the delivery of raw water to the O.N. Stevens Water Treatment Plant from both Lake Texana and the Colorado River. MRP I consists of 101 miles of pipeline to Lake Texana in Edna, TX. The City has a contract with Lavaca-Navidad River Authority (LNRA) to purchase water from Lake Texana. This project consists of an assessment review to determine the condition and capacity of the pipeline. The recommended improvements that include but are not limited to LNRA pumping facility expansion and pipeline repairs will be completed to implement proactive measures to ensure the useful life of the pipeline and to operate the pipeline at increased flows.

Justification

This project will provide detail and analysis regarding the pipeline efficiency, reliability, and capacity. Required repairs and upgrades will also be identified and implemented.

Expenditures	Prior	FY 26	FY 27	FY 28	Total
Construction/Rehab	12,500,000	1,308,000	2,000,000	1,282,207	17,090,207
Design	1,200,000	692,000	0	0	1,892,000
Eng, Admin Reimbursements	450,000	200,000	200,000	130,000	980,000
Contingency	0	0	0	457,793	457,793
Inspection	2,580,261	0	0	0	2,580,261
Total	16,730,261	2,200,000	2,200,000	1,870,000	23,000,261

Funding Sources	Prior	FY 26	FY 27	FY 28	Total
Raw Water Fund	1,251,101	2,200,000	2,200,000	1,870,000	7,521,101
Revenue Bonds	15,479,160	0	0	0	15,479,160
Total	16,730,261	2,200,000	2,200,000	1,870,000	23,000,261

Budget Impact

This project will increase the lifespan of the pipeline, enable it to operate more efficiently and reduce ongoing maintenance costs.