



DEVELOPER PARTICIPATION AGREEMENT – MPM DEVELOPMENT, LP

FOR STREET IMPROVEMENTS

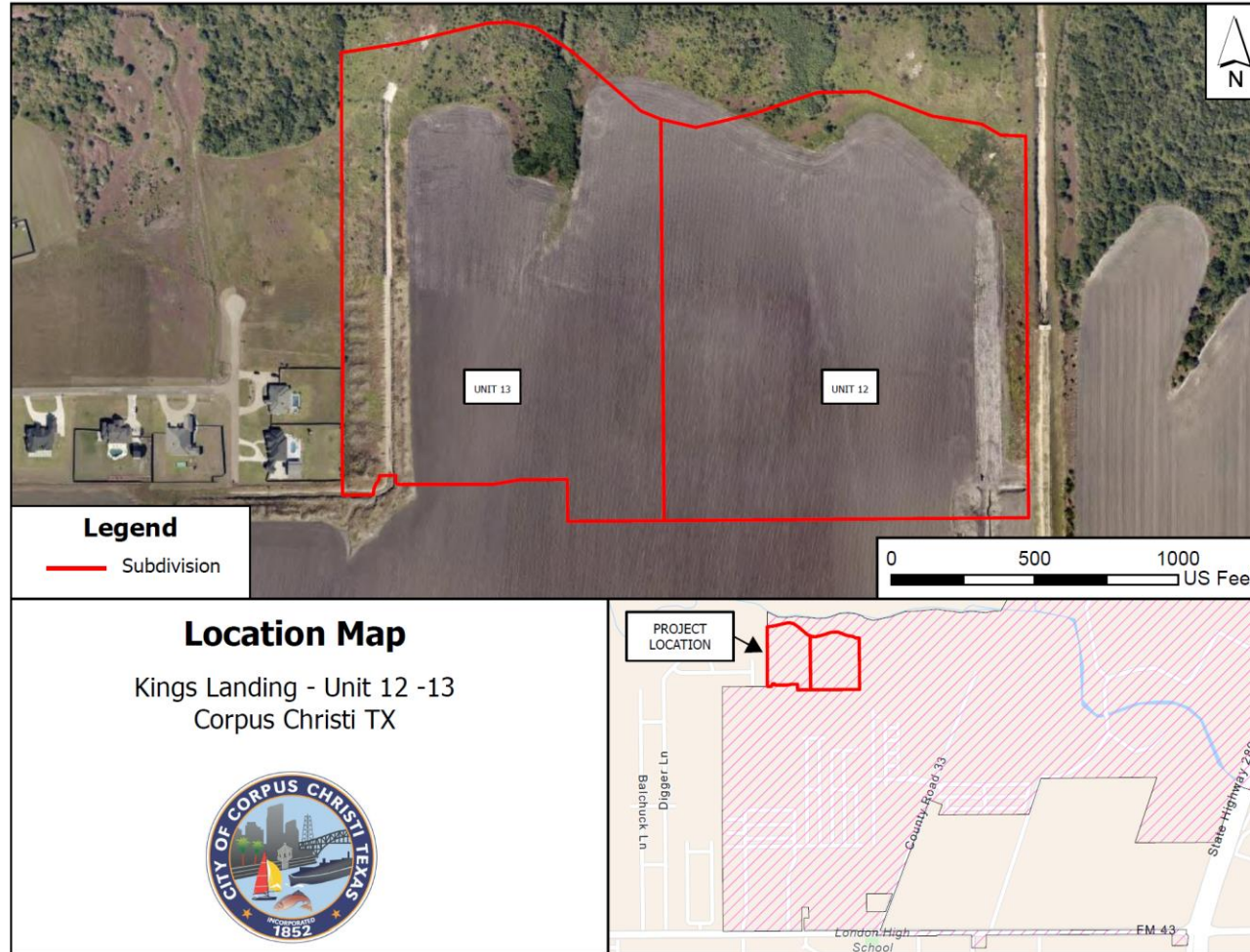
For Street Improvement

DEVELOPER PARTICIPATION AGREEMENT

Resolution authorizing a Participation Agreement (“Agreement”) with MPM Development, LP (“Developer”) for the City’s share of the cost for the oversizing of the Portland Cement Concrete Pavement/Roller Compacted Concrete Pavement (PCCP/RCCP) street infrastructure improvements from a “L-1A” Local Residential street to a “C-3” Primary Collector street on Castle Black Drive not to exceed \$214,304.40 for the development known as King’s Landing Unit 13, located north of Lady Alexa Drive and west of London Pirate Road (District 3).



FOR STREET IMPROVEMENT LOCATION MAP



For Street Improvement

TOTAL COST ESTIMATE

		BASS WELSH ENGINEERING		3054 S. Alameda St.	
		TX Registration No. F-52 Survey Registration No. 100027-00		9/8/2025	
		P.O. Box 6397			
		Corpus Christi, TX 78466-6397			
Kings Landing Unit 13 - Cost					
Oversize Castle Black Dr. (Residential to C-3 Collector)					
Cost of Oversized Street					
ITEM	DESCRIPTION	QUANTITY	UNIT	COST	TOTAL
1	8" PCCP/ RRCP TO LIP OF GUTTER		1611 SY	\$95.00	\$153,045.00
2	12" LIME STABILIZED SUBGRADE TO 2'BC		1740 SY	\$45.00	\$78,300.00
3	12" PORTLAND CEMENT STABILIZED SUBGRADE TO 2'BC		1740 SY	\$35.00	\$60,900.00
4	EXCAVATION TO 2' BC		1740 SY	\$4.00	\$6,960.00
					\$299,205.00
Cost of Residential Street					
ITEM	DESCRIPTION	QUANTITY	UNIT	COST	TOTAL
1	7" PCCP/RCCP TO LIP OF GUTTER		902 SY	\$72.00	\$64,944.00
2	8" LIME STABILIZED SUBGRADE TO 2'BC		1031 SY	\$28.00	\$28,868.00
3	8" PORTLAND CEMENT STABILIZED SUBGRADE TO SUBGRADE TO 2'BC		1031 SY	\$22.00	\$22,682.00
4	EXCAVATION TO 2' BC		1031 SY	\$4.00	\$4,124.00
					\$120,618.00
				CITY PORTION EQUALS DIFFERENCE IN CONSTRUCTION COST	\$178,587.00
				11% ENGINEERING, SURVERYING, & TESTING	\$19,644.57
				7% CONTINGENCY	\$12,501.09
				2% BOND	\$3,571.74
				TOTAL AMOUNT REIMBURSABLE	\$214,304.40



FOR STREET IMPROVEMENT

RECOMMENDATION

- Staff recommends approval of the developer participation agreement with MPM Development, LP to reimburse the developer up to \$214,304.40 for the City's share of the cost to construct the street infrastructure improvements.
- The request is in accordance with UDC Section 8.4 City Participation in Streets and Drainage Cross Sections.





Thank you!