



Signatory Airline Use and Lease Agreement



Council Presentation
December 3, 2024



Proposed Lease Agreement



- The term of this agreement is for a period of three (3) years with a mutual agreement option to renew for a period of two (2) two-year periods.
- The leased premises include ticket counter and queuing, back-office operations, gate lounge area, storage room. Common area leased space include security area (TSA checkpoint) and baggage claim.
- The agreement includes a revised rate structure focused on lower operating costs to the airlines.
- The Airport Board recommended approval of the lease agreements at their regular called meeting on October 30 2024.



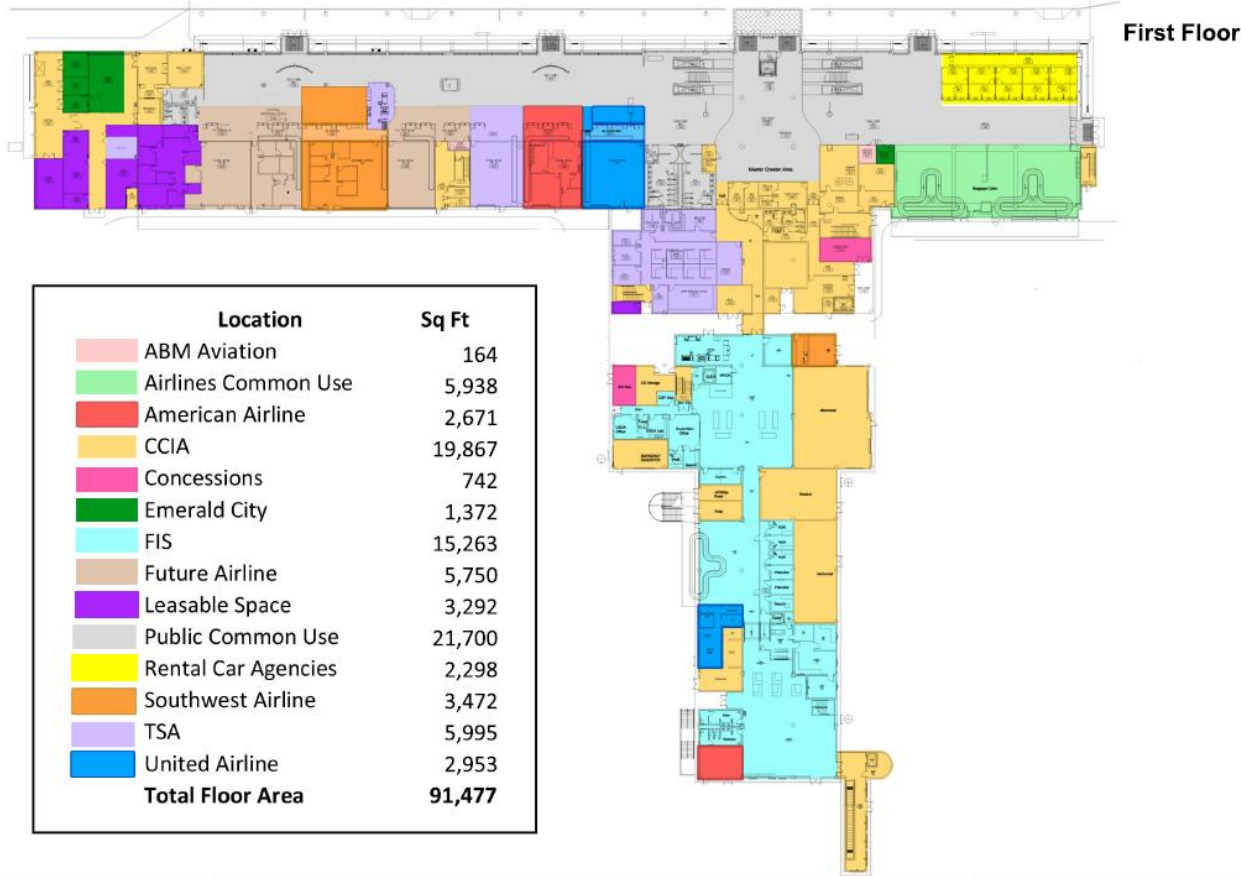


EXHIBIT C
COMMERCIAL AIRLINE LEASE-TERMINAL FIRST FLOOR

1000 International Drive

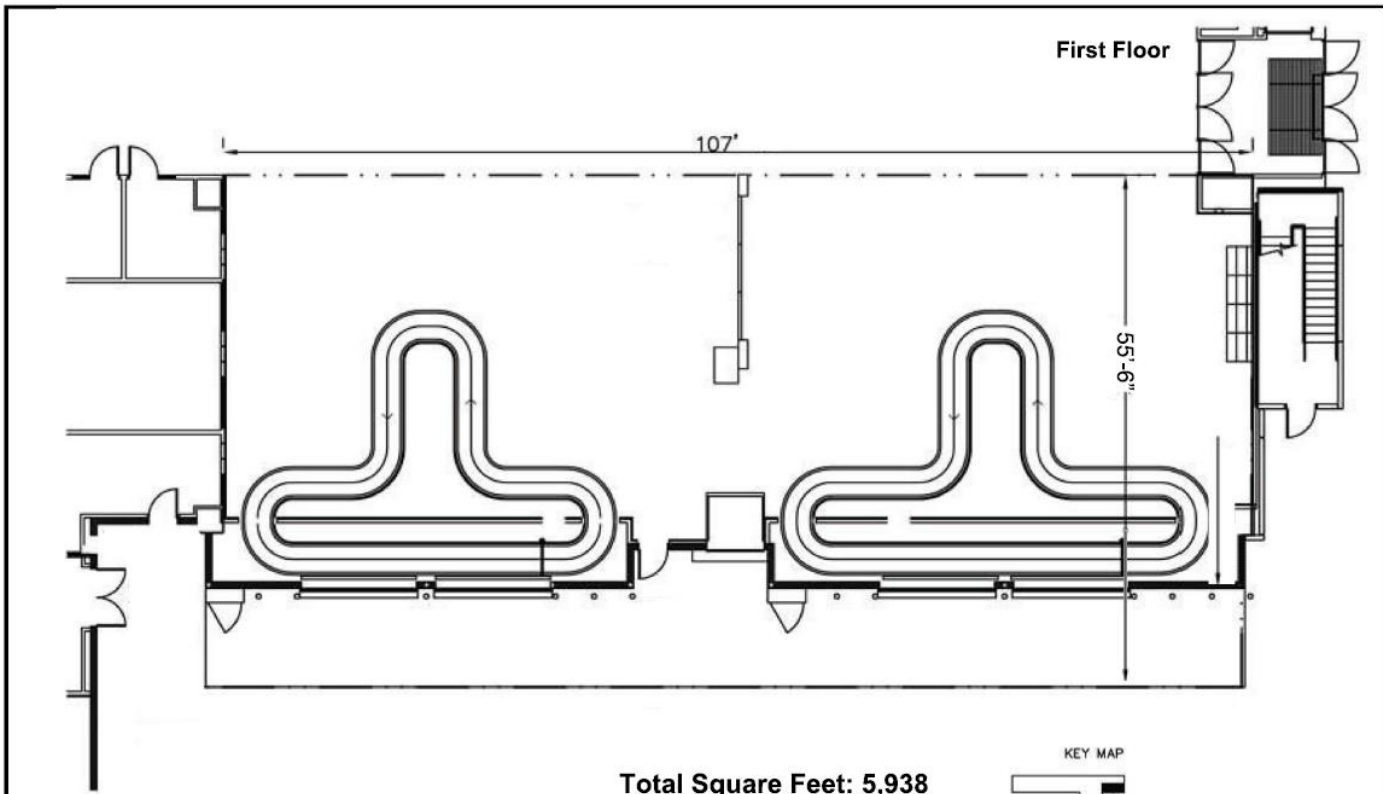
Not to Scale

Sheet No. 1 of 5

Prepared by: Randy Schumann

Approved by: Kevin Smith

Date: 07/09/2024



Total Square Feet: 5,938

EXHIBIT C
COMMERCIAL AIRLINE LEASE-BAGGAGE CLAIM
1000 International Drive

Not to Scale

Sheet No. 2 of 5

Prepared by: Randy Schumann
 Approved by: Kevin Smith
 Date: 07/09/2024

Second Floor

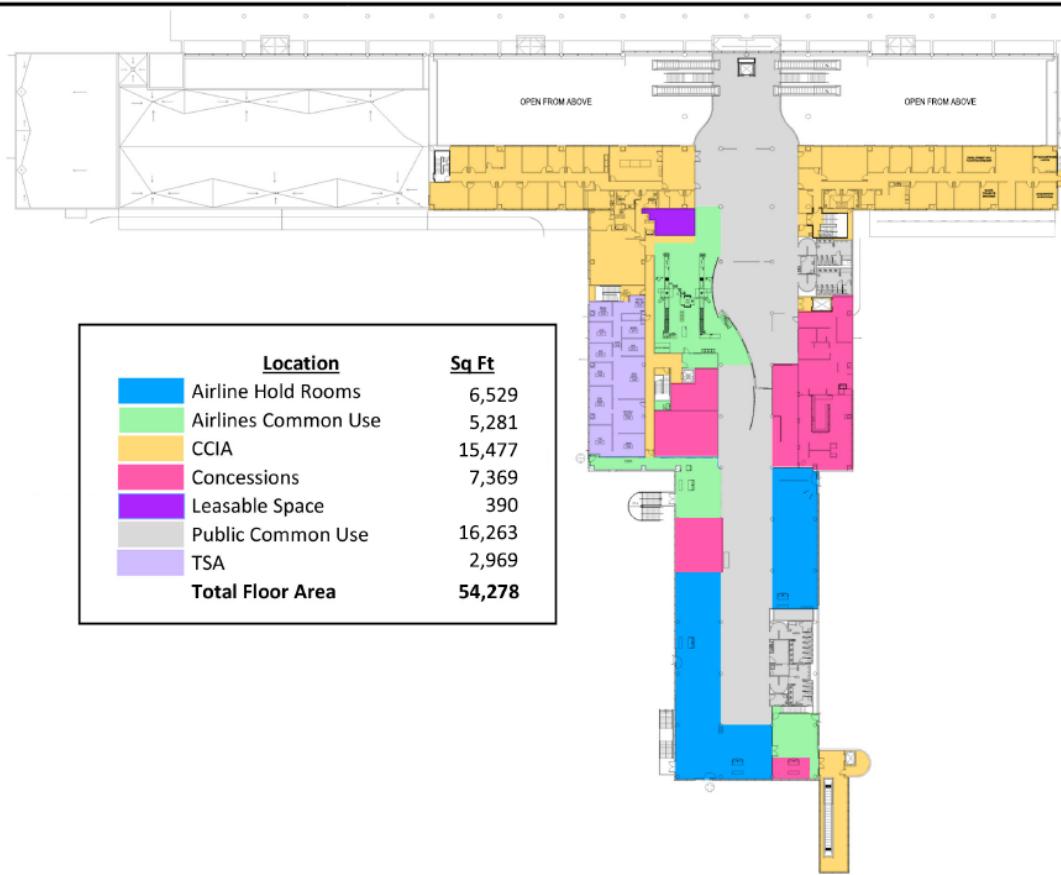


EXHIBIT C COMMERCIAL AIRLINE LEASE-TERMINAL SECOND FLOOR 1000 International Drive

Not to Scale

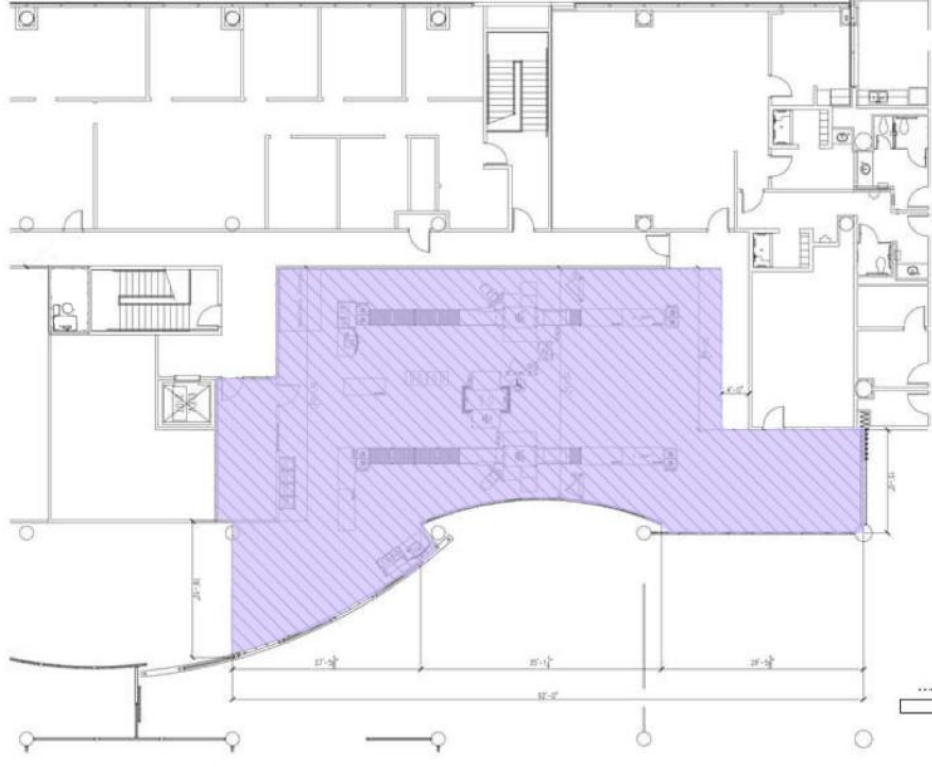
Sheet No. 3 of 5

Prepared by: Randy Schumann

Approved by: Kevin Smith

Date: 07/09/2024

Second Floor



Total Square Feet : 3,214



EXHIBIT C
TSA SECURITY CHECKPOINT
1000 International Drive

Prepared by: Randy Schumann
Approved by: Kevin Smith
Date: 07/09/2024

Not to Scale

Sheet No. 4 of 5

Second Floor



EXHIBIT C
COMMERCIAL AIRLINE LEASE-HOLDROOMS
 1000 International Drive

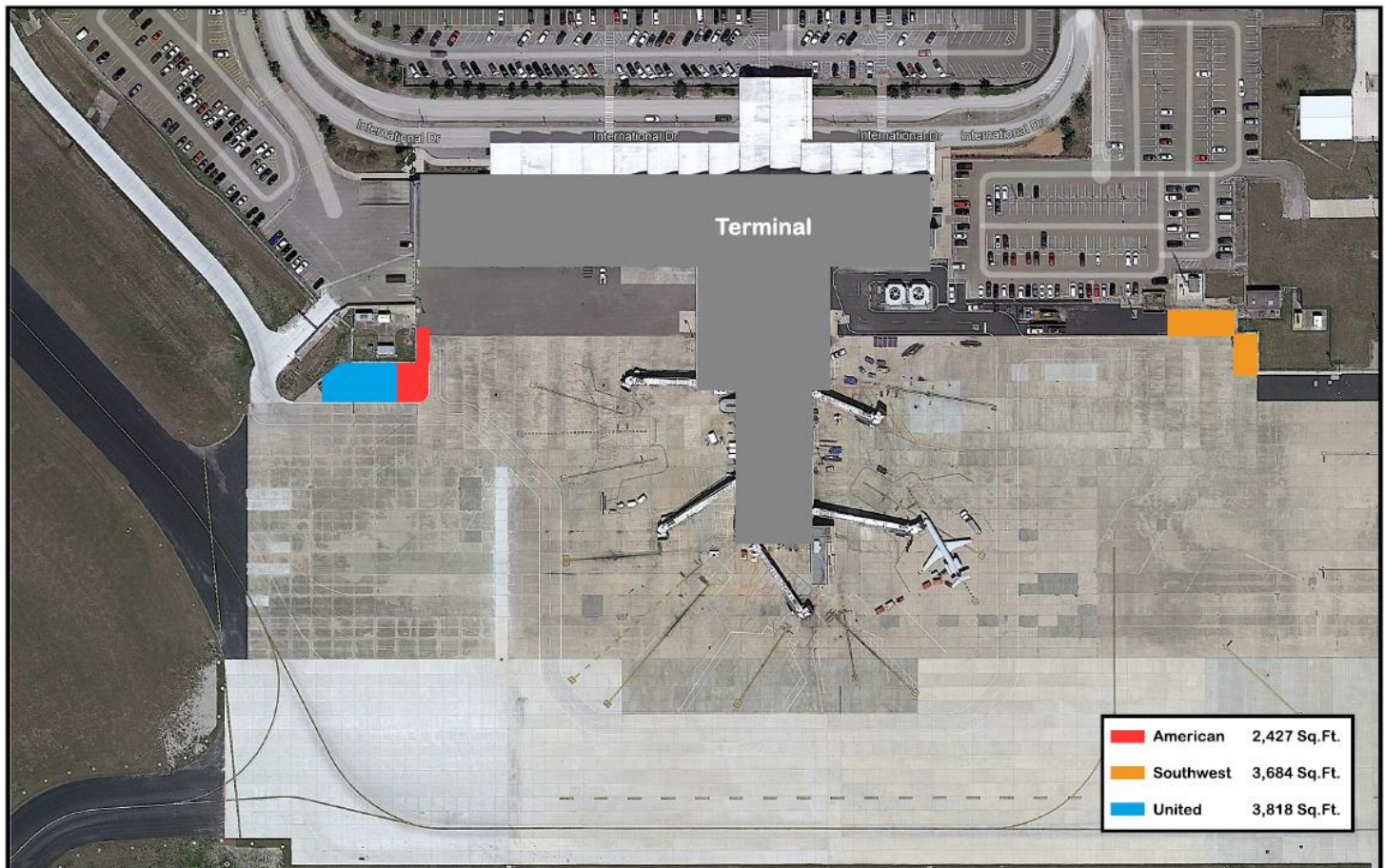
Not to Scale

Sheet No. 5 of 5

Prepared by: Randy Schumann

Approved by: Kevin Smith

Date: 07/09/2024



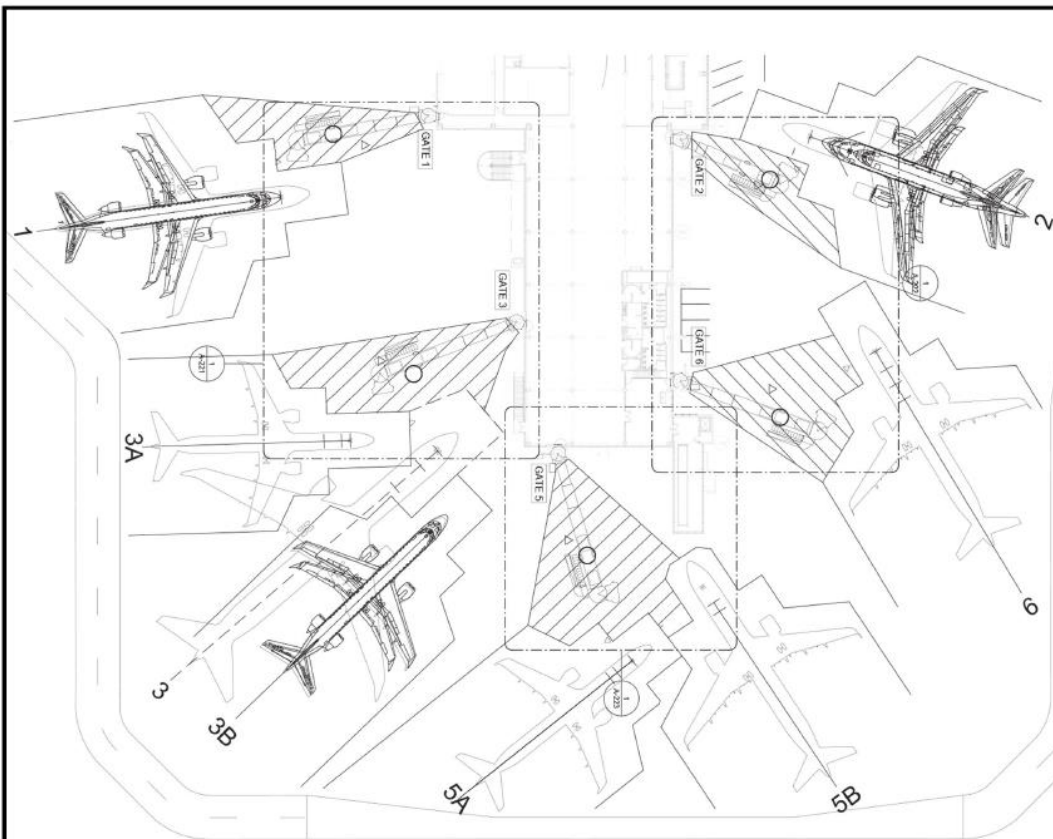
	American	2,427 Sq.Ft.
	Southwest	3,684 Sq.Ft.
	United	3,818 Sq.Ft.



EXHIBIT D
GROUND SERVICE EQUIPMENT STORAGE
 1000 International Drive

Not to Scale Sheet No. 1 of 2

Prepared by: Randy Schumann
 Approved by: Kevin Smith
 Date: 07/09/2024



Preferential Use of Apron Positions		
Gate #	Airline	Type of Craft
1	CCIA	737 - 300, 500, 700, 800, 900 A 319,320,321 CRJ 200, 700, 900 ERJ 135, 145, 170, 175W, 190, 195
2	Southwest	737 ALL A 319, 320, 321 CRJ 200,700,900 ERJ 135, 145, 170, 175W, 190
3	United	737 - 100, 300, 500, 700, 800, 900 757 - 200, 300 767 - 300, 400 MD 88
3A	United	CRJ 200, 700, 900 ERJ 135, 145, 170, 175W, 190, 195
3B	United	CRJ 200, 700, 900 ERJ 135, 145, 170, 175W, 190, 195
5A	American	CRJ 200, 700, 900 ERJ 135, 145, 170, 175W, 190, 195
5B	American	737 -300, 500, 700, 800, 900 A 320, 321 CRJ 200, 700 ERJ 135, 145, 170, 175W, 190, 195
6	CCIA	737 - 300, 500, 700, 800, 900 A 319, 320, 321 CRJ 200, 700, 900 ERJ 135, 145, 170, 175W, 190, 195



EXHIBIT D
COMMERCIAL AIRLINE PREFERENTIAL USE OF APRON
 1000 International Drive

Not to Scale

Prepared by: Randy Schumann
 Approved by: Kevin Smith
 Date: 07/09/2024