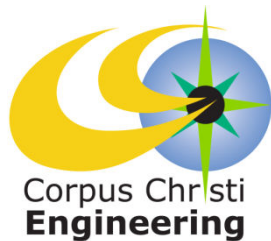




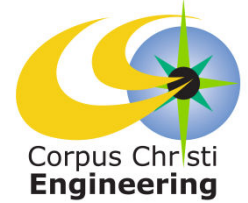
Street Preventative Maintenance Program (SPMP)



Council Presentation
November 19, 2013



SPMP Street Selection Criteria

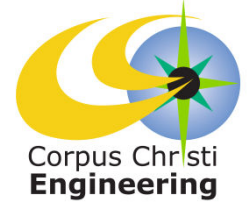


1. Work based on Pavement Condition Index (PCI) scores:
 1. Approximately 56 for Overlays and 71 for Seal Coat
 2. Work the ones closest to 56 and 71 first
2. Distribute by District based on Capital Assets needing Maintenance (% of Network)
3. Distribute by Street Classification (Residential, Collectors & Arterials) based on Capital Assets (% of Network)
4. Coordinate work for Residential by Neighborhood and initial subdivision construction dates
5. Distribute work by percentage of Overlay and Seal Coats
6. Prioritize by traffic loads impacting potential premature failure of roadway

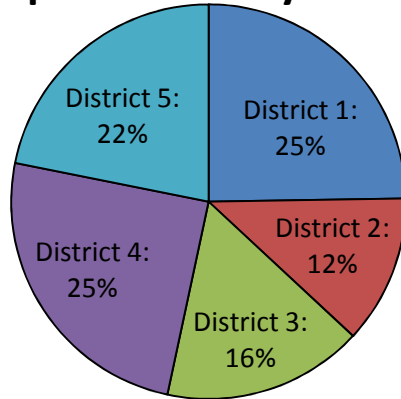




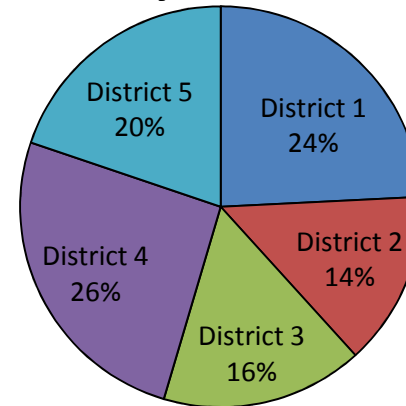
SPMP Requirements and Work Plan Comparison



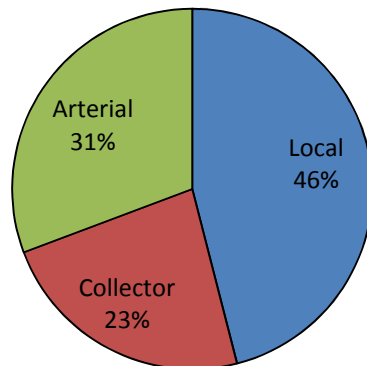
Maintenance Requirements by District



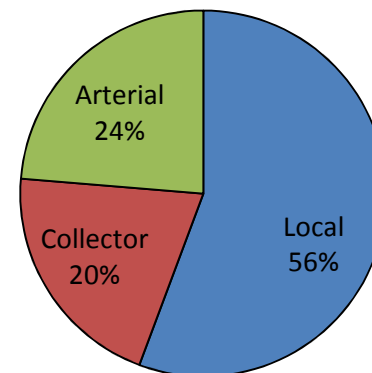
2014 SPMP Work Plan by District



Maintenance Requirements by Road Classification



2014 SPMP Workplan by Road Classification

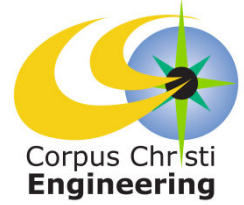


The percentages are all based on Square Yards of Pavement in each District/Category relative to the total City System.

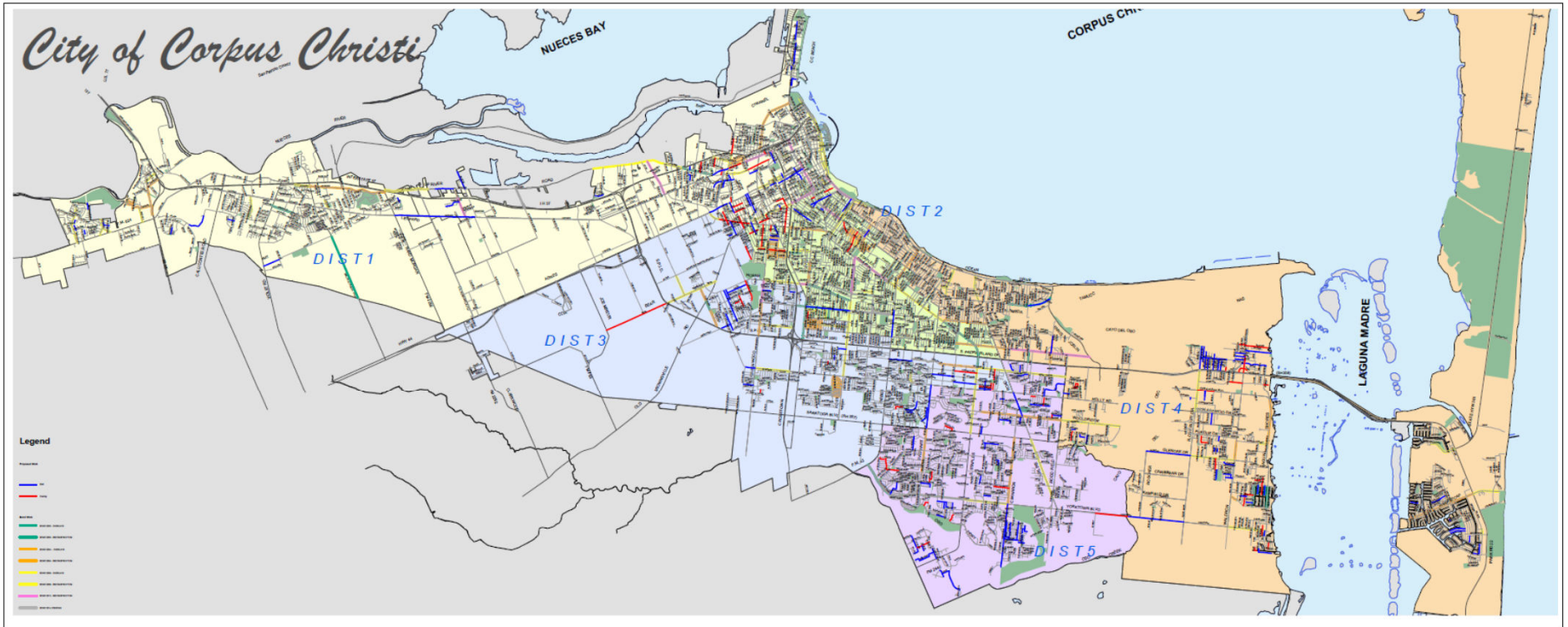




Street Work Plan Map

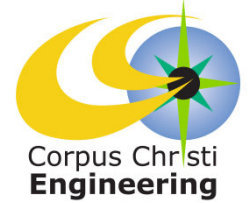


*2014 SPMP Work Plan (Year - 1)
and BOND Work 2000 - 2014*





SPMP Schedule



	Month	Aug. '13				Sep. '13				Oct. '13				Nov. '13				Dec. '13				Jan. '14				Feb. '14				Mar. '14				Apr. '14				May	
		Week	1	2	3	4	1	2	3	4	1	2	3	4	1	2	3	4	1	2	3	4	1	2	3	4	1	2	3	4	1	2	3	4	1	2			
1	City Council approved Street Maintenance Fee																																						
2	City Council approved Engineering Contract for SPMP pilot development																																						
3	Development of SPMP Guiding Principles and Program Approach	X	X	X	X																																		
4	City Council approval of SPMP Guiding Principles					X																																	
5	Presentation to City Council on SPMP Year 1 Work Plan												X																										
6	Develop plans and specifications with initial set of Delivery Orders (DO's)					X	X	X	X	X	X	X																											
7	Evaluation, selection and preparation of SPMP Year 1 Pilot Phase 1 DO's					X	X	X	X	X	X	X																											
8	Bid Phase for SPMP IDIQ construction contract with Phase 1 DO's											X	X	X	X																								
9	City Council award of SPMP IDIQ construction contact																																						
10	Begin Construction of SPMP Pilot Phase 1 DO's																																						
11	Provide Field Engineering & Documentation for SPMP Pilot Phase 1 DO's																																						
12	Develop Phase 2 DO's																																						
13	Award Phase 2 DO's																																						
14	Begin Construction - SPMP Pilot Phase 2 DO's																																						

