

Professional Services Contract Amendment - Mary Rhodes Pipeline Phase I Condition Assessment

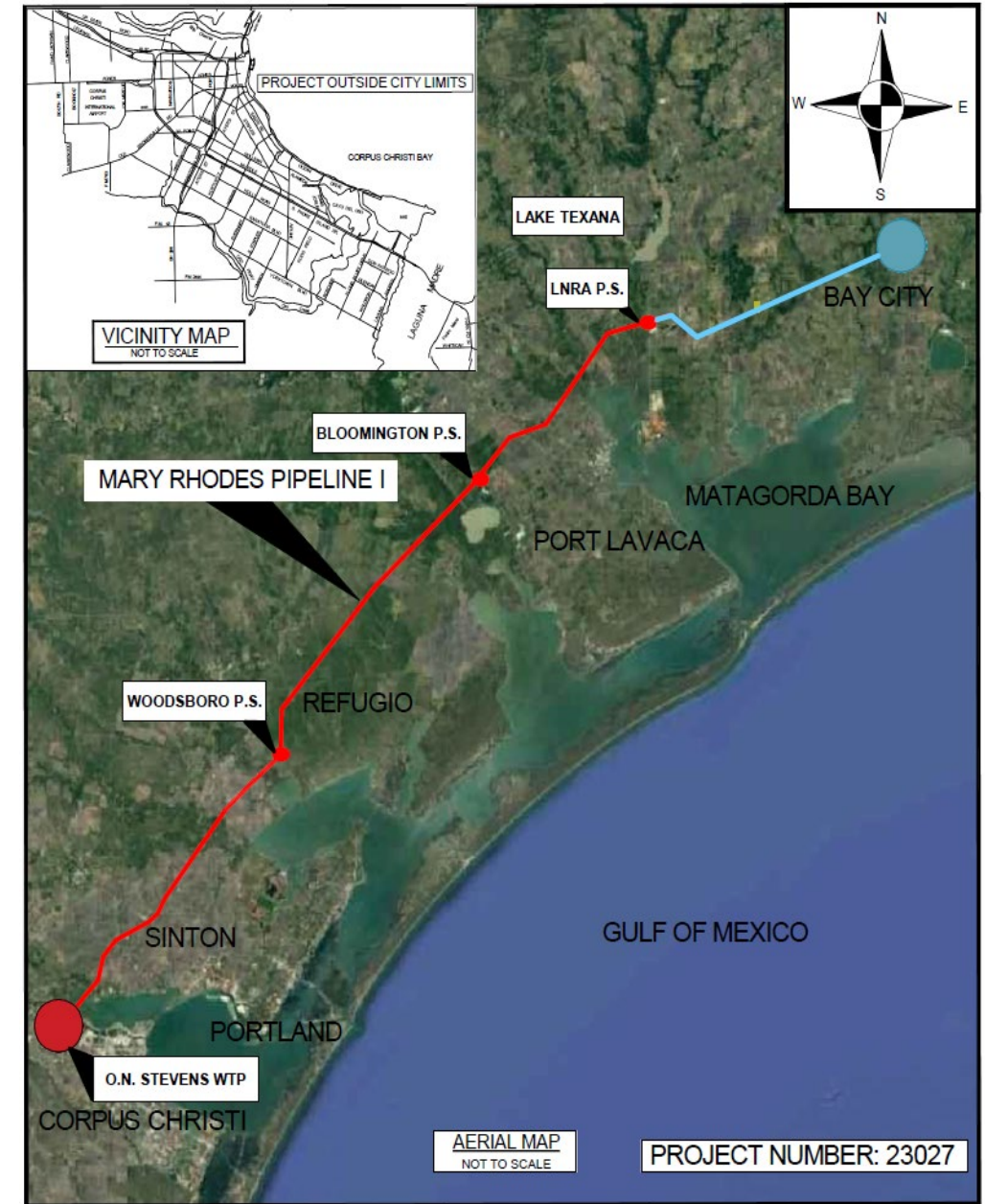
Nicholas J. Winkelmann, P.E.
Chief Operating Officer - Corpus Christi

Jerry W. Snead II, P.E.
HDR

April 28, 2026

Mary Rhodes Pipeline

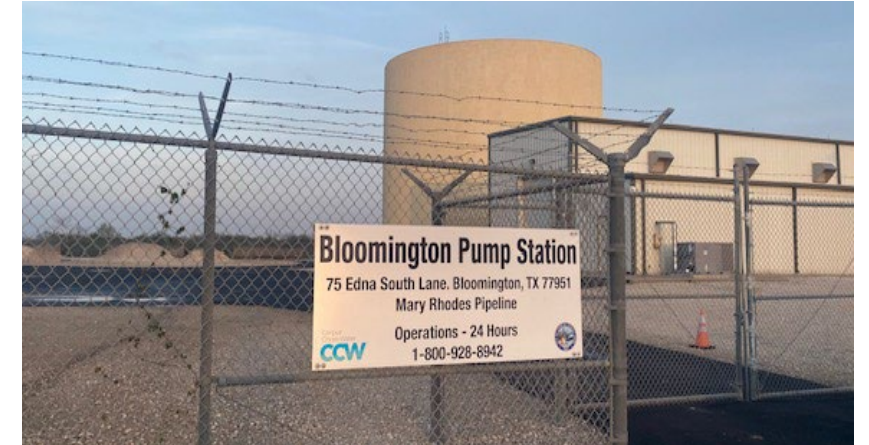
- The City has a contract with the Lavaca Navidad River Authority (LNRA) to purchase water from Lake Texana
- The City of Corpus Christi owns and operates Mary Rhodes Pipeline (MRP) Phase I, which transports raw water 101 miles from Lake Texana in Edna, Texas to the O.N. Stevens Water Treatment Plant (ONSWTP)
- MRP Phase I was put into service in 1998 and serves as a critical water supply line, providing approximately 72 MGD under normal operating conditions
- MRP Phase I has two booster pump stations, located in Bloomington and Woodsboro, to assist with high-flow pumping conditions
- MRP Phase II was put into service 2016.
- MRP Phase II provides water from Lower Colorado River.



Project Scope

This motion authorizes the approval of Amendment No. 3 to a professional services contract for

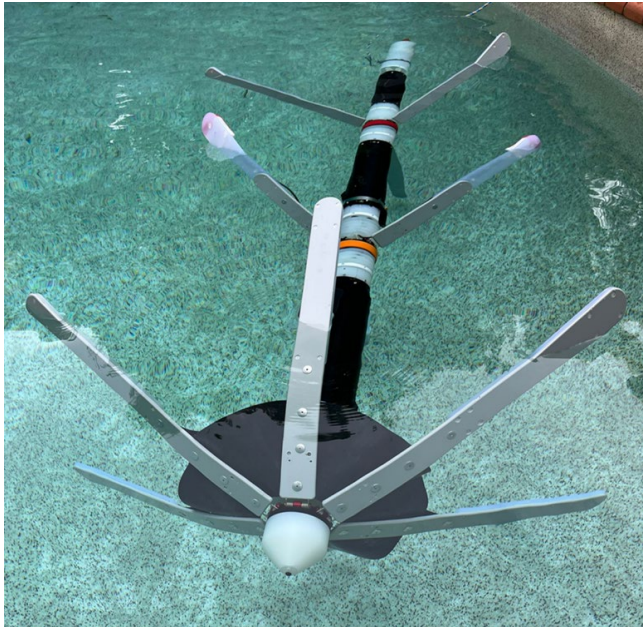
- Pressure exceedance investigation
- Evangeline integration coordination services
- Pump station capacity analysis
- Additional support for the MRP Phase I condition assessment project



Project Scope

Pressure Exceedance Investigation

The subconsultant, Insight Water, will perform an internal condition assessment using an advanced tool with sonar and pressure sensors to more precisely locate potential debris, blockages, and air pockets suspected of causing pipeline pressure exceedances between the LNRA Pump Station and the Bloomington Pump Station



Internal Assessment Tool



Pressure Exceedance Areas

Potential obstructions causing decreased pipeline conveyance capacity may include sediment, biofilm, invertebrates, construction materials, debris, or pipe damage

Staff Recommendation

Staff recommends approval of Amendment No. 3 to a professional services contract with HDR, Inc. in the amount of \$474,896.00 for a total contract value not to exceed \$3,055,157.00 for the Mary Rhodes Pipeline Phase I Condition Assessment project.

The top half of the slide features four horizontal, wavy bands of varying shades of blue, creating a dynamic, water-like effect.

Thank you!