



**Zoning Case #0517-02
IDV NPID, LLC**

From: "RM-3" Multifamily 3 District

To: "CG-2" General Commercial District

Planning Commission Presentation
May 17, 2017

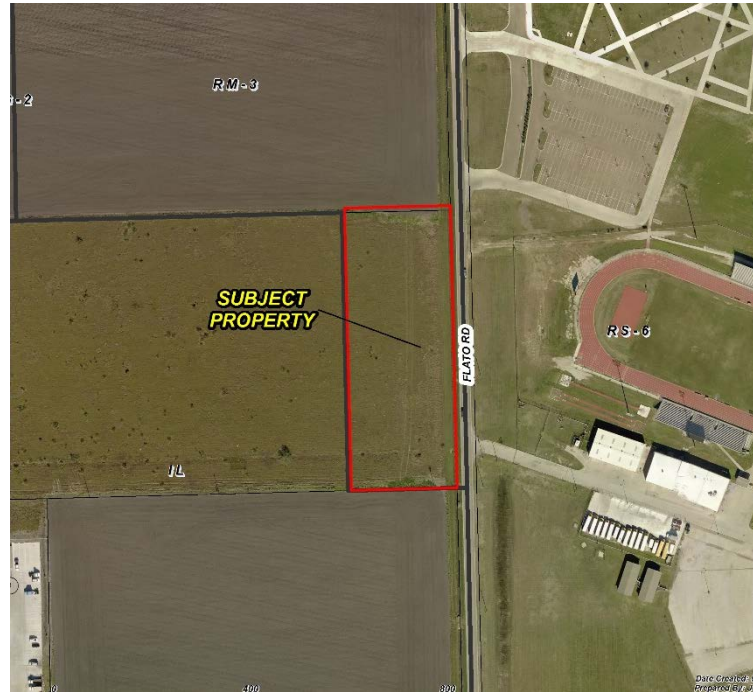


Aerial Overview



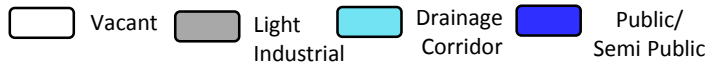
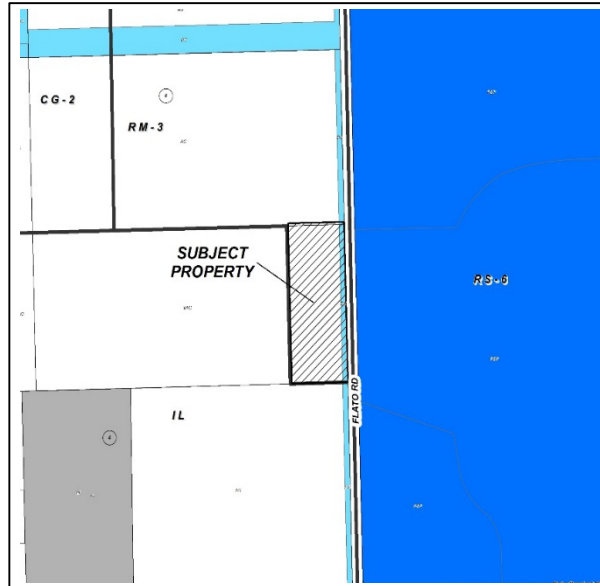


Aerial Map

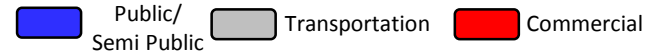
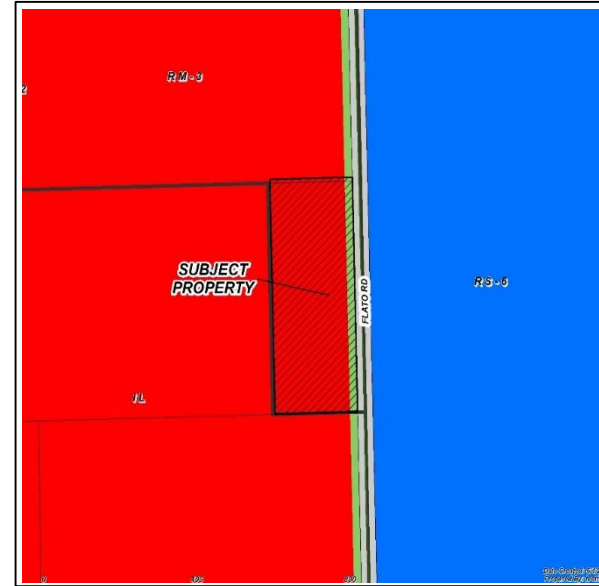




Existing Land Use

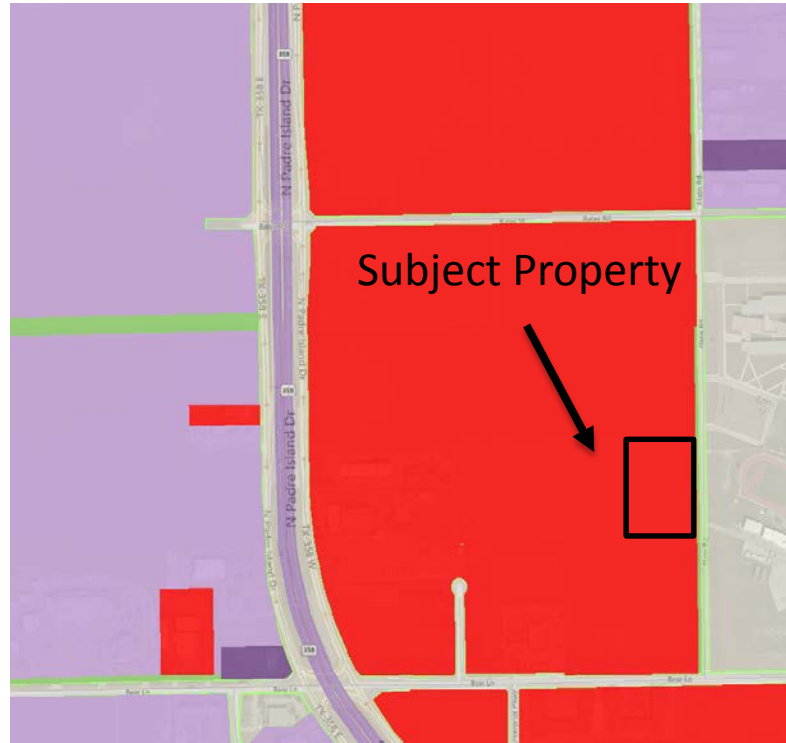


Future Land Use





Future Land Use Map



- Heavy Industrial
- Light Industrial
- Commercial





Subject Property Viewing West 901 Flato Road





Facing North on Flato Road from Subject Property





Facing East Across from Subject Property





Facing South on Flato Road from Subject Property





Public Notification

3 Notices mailed inside 200' buffer
4 Notices mailed outside 200' buffer

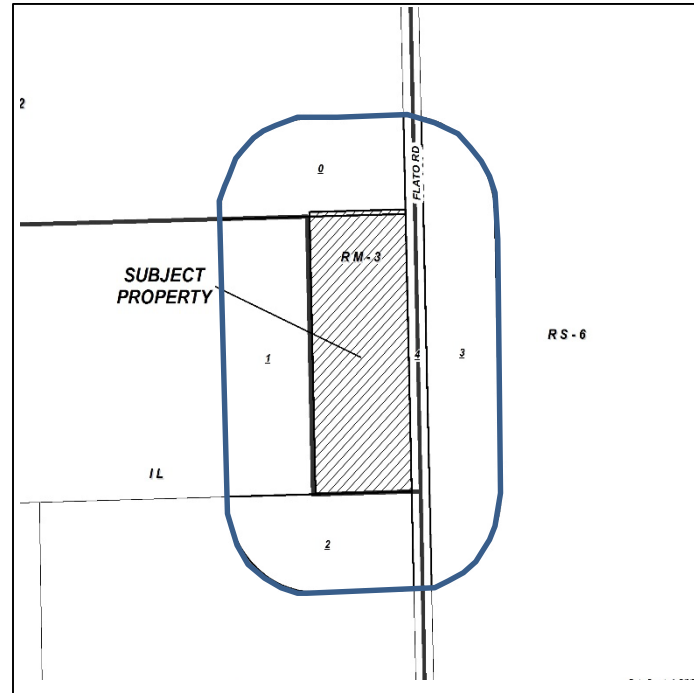
Notification Area



Opposed: 0



In Favor: 0





Staff Recommendation

Approval of the “CG-2” General Commercial District