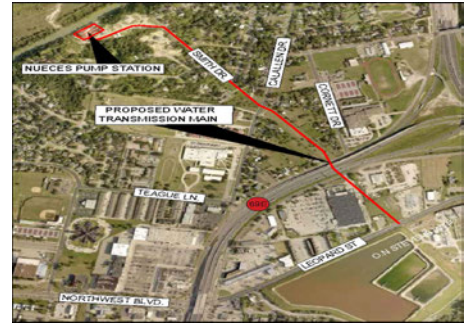


Capital Improvement Plan

City of Corpus Christi, Texas

2025 *thru* 2027

Project # 25014
Project Name Nueces River Raw Water Pump Station Piping & System Upgr.



Type Improvement/Additions
Useful Life 40 years
Category Water Supply

Department Water
Contact Director of Water Utilities
Priority Priority Level 1
Council District 1

Status Active

Description

The O.N. Stevens Water Treatment Plant (ONSWTP) is executing a strategic upgrade plan to improve efficiencies and reliable treatment capacities. The Nueces River Pump Station supplies water from the Nuecess River to ONSWTP through 54-inch water lines. The Mary Rhodes Pipeline (MRP) is aligned in the same pipeline corridor with a 72-inch Pre-Cast Cylinder Pipeline. This project will modify the site piping of the pump station to improve operational flexibility which will allow for the water to be transmitted to ONSWTP from the Nueces River or the MRP through varying combinations of the 54-inch and 72-inch pipelines. The project will also complete the pipeline alignment of the new 54-inch diameter line to the same site and header piping. Additionally the low cover and slope stabilization areas in this pipeline corridor will be corrected.

Justification

The header piping modifications will provide greater operational flexibility which will allow for future project LR 9 to potential slip line the original 1954 fifty-four inch diameter pipelines.

Expenditures	Prior Years	2025	2026	2027	Total
Construction/Rehab		13,465,120	10,000,000		23,465,120
Design		1,200,000			1,200,000
Eng, Admin Reimbursements		250,000	250,000		500,000
Land Acquisition		1,534,880			1,534,880
Total		16,450,000	10,250,000		26,700,000

Funding Sources	Prior Years	2025	2026	2027	Total
Revenue Bonds		16,450,000	10,250,000		26,700,000
Total		16,450,000	10,250,000		26,700,000

Budget Impact/Other

This project is critical component of the planned upgrades at the ONSWTP.