

Participation Agreement

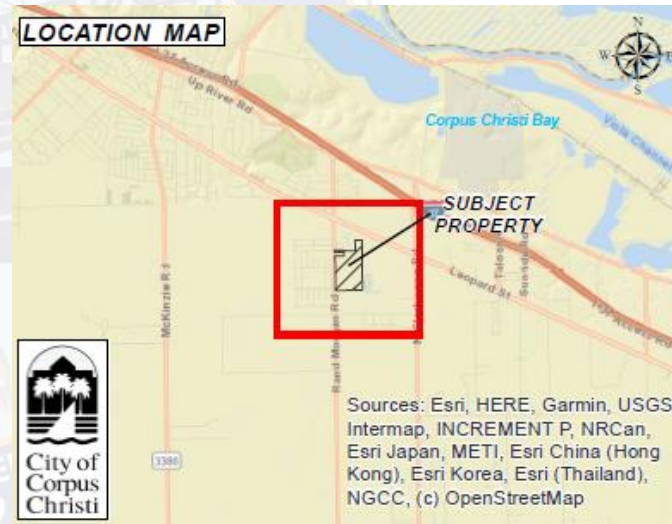
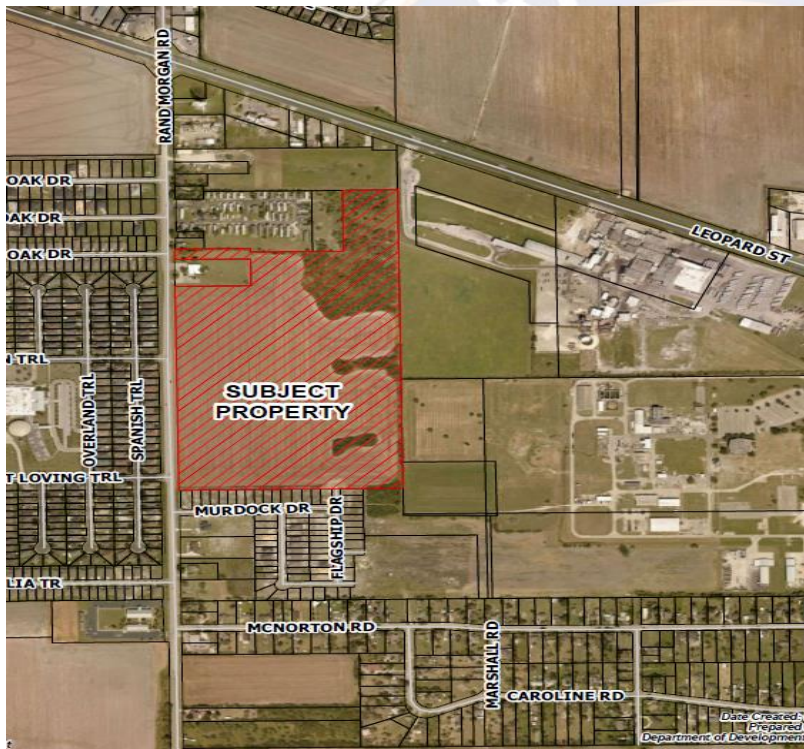
**Agreement with MPM Development LP
For Off-Site Stormwater Improvements
Royal Oak Future Units**

City Council
January 25, 2022

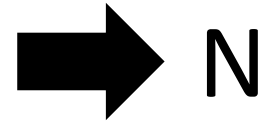
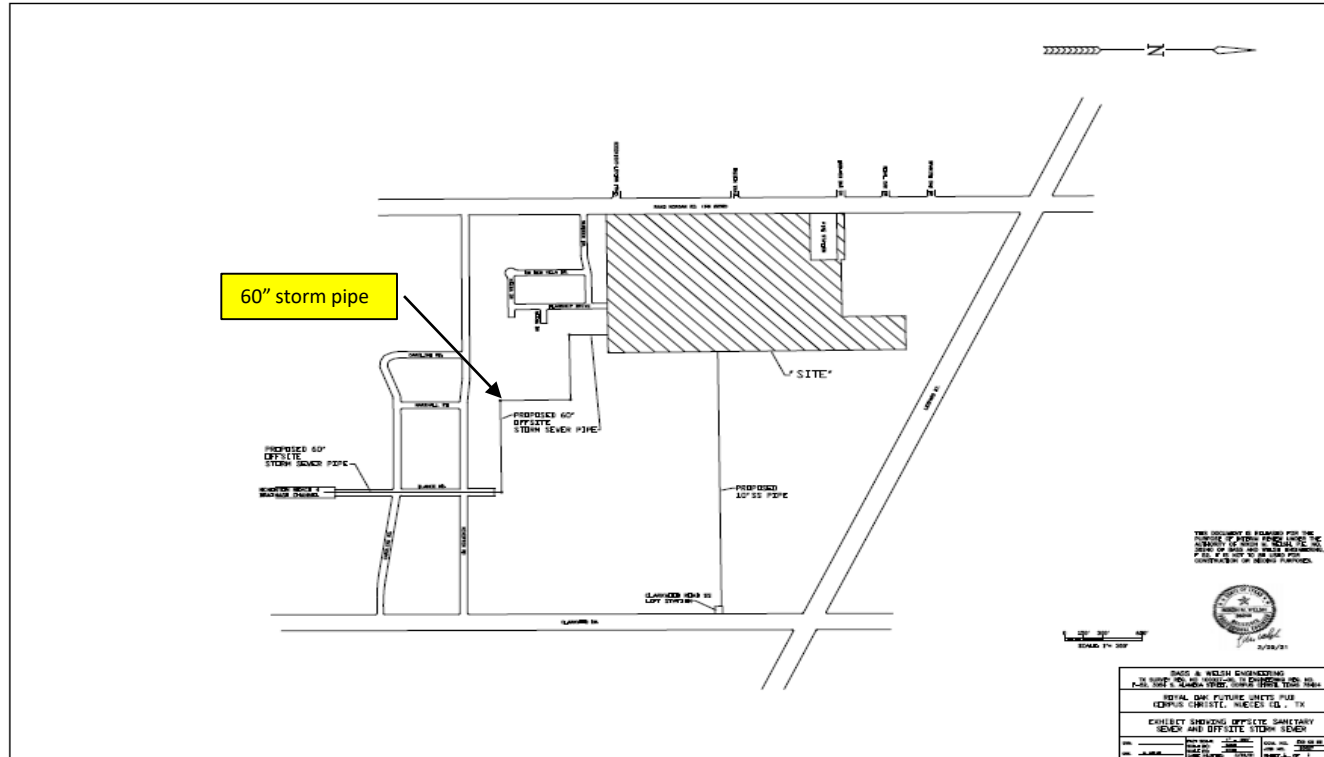
Aerial Overview



Location Map



Proposed Improvements

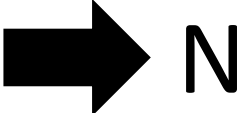
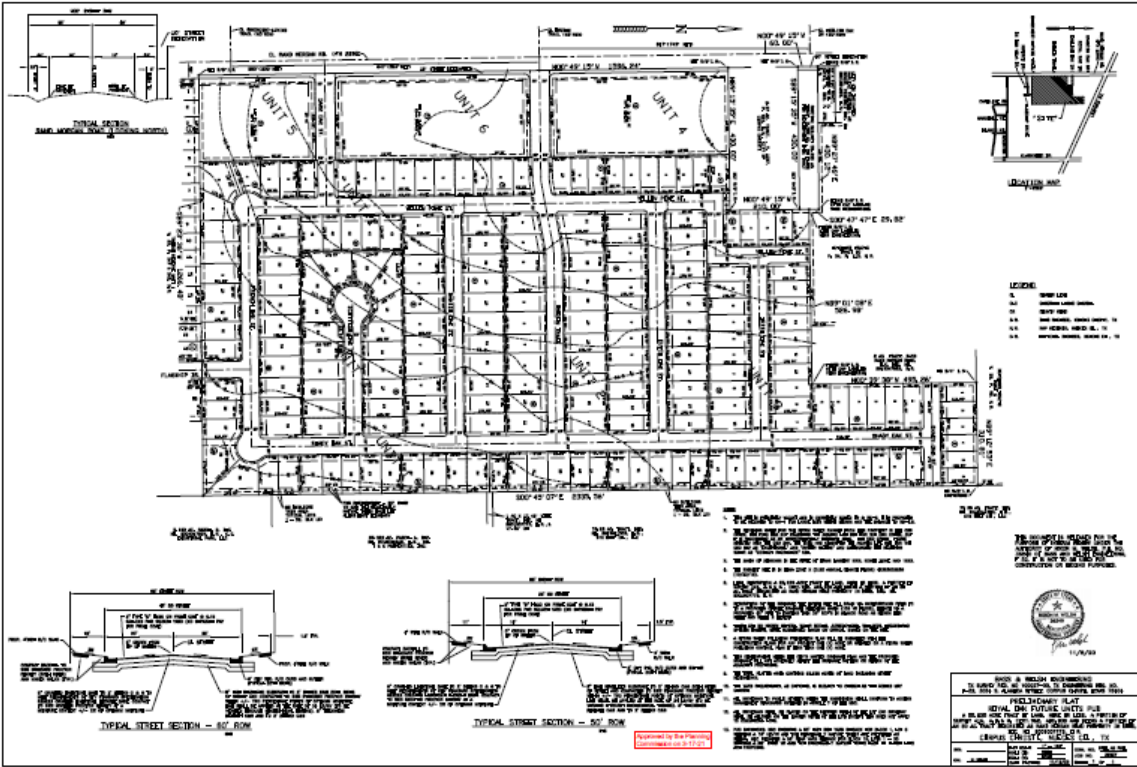


Recommendation

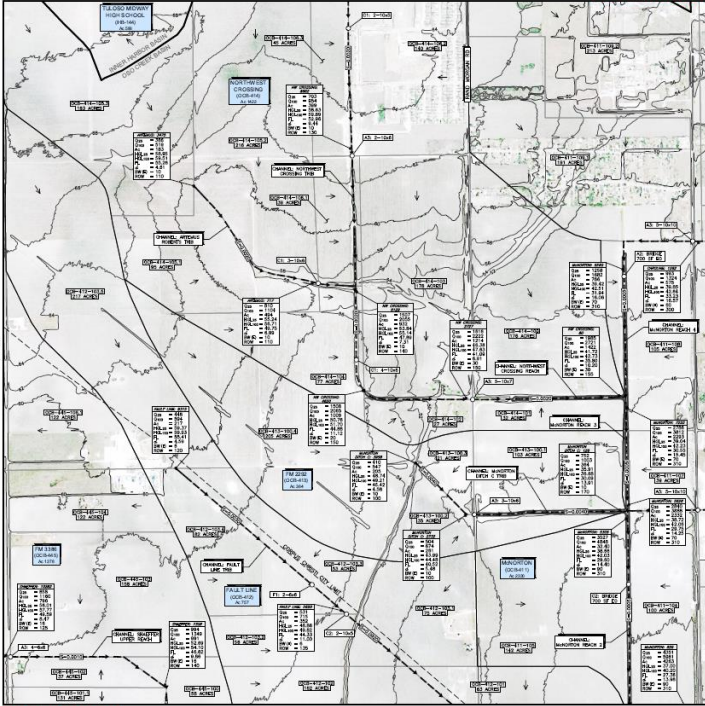
Approval

The request submitted by the applicant is in accordance with Texas Local Government Code 212, supports the Northwest Corridor development initiative, and the applicant paid the required application fee.

Preliminary Plat



Stormwater Master Plan



STORM WATER MAP

Legend symbols for:

- Basin Boundary Line
- Sub-Basin Boundary Line
- Channel Boundary Line
- Channel Offset (ft) Limits
- 2-Foot Low Contour (Graded Every 10-Foot)
- Sub-Basin Name
- Sub-Basin Number
- Total Area of Sub-Basin
- Sub-Area Number (Sub-Area Size Shown in Acres)
- Basin
- Channel Alignment
- Closed System
- Channel Name
- Name of Underdrain Infrastructure
- Channel Slope (ft/ft)
- Channel Slope Name and Model System
- Peak Flow Rate in CFS (100 Year Event)
- Peak Flow Rate in CFS (10 Year Event)
- Curb Height (ft) Section
- Channel Area at Basin Location
- Invert/Elev. Once Line (100 Year Event)
- Invert/Elev. Once Line (10 Year Event)
- Flow Line Elevation
- Channel Depth
- Bottom Width (Bottom Channel)
- Bottom Width (Concrete Channel)
- Date of Latest System
- Channel Reference
- Future Crossing Structure (Date & Size Shown)
- Square Feet
- Specific Opening

DATE: 08/11/2011

DATE: 08/11/2011

PREPARED BY: GOLDSTON ENGINEERING, INC. (P.E. # 0000000000)

REVISION: 08/11/2011 (REVISED FOR ANY CHANGES)

PREPARED BY: GOLDSTON ENGINEERING, INC. (P.E. # 0000000000)

REVISION: 08/11/2011 (REVISED FOR ANY CHANGES)

GOLDSTON ENGINEERING
A CIVIL & MECHANICAL COMPANY

DOBSON & ASSOCIATES, INC.
Hydrologist and Civil Engineer

City of Corpus Christi

CITY OF CORPUS CHRISTI
STORM WATER DEPARTMENT
CITY PROJECT NO. 2083

MAP NO. K11