



**Zoning Case #0915-07  
City of Corpus Christi  
(Sam Kane Beef Processors)**

From: "FR" Farm Rural District  
To: "IH" Heavy Industrial District

Planning Commission Presentation  
September 23, 2015

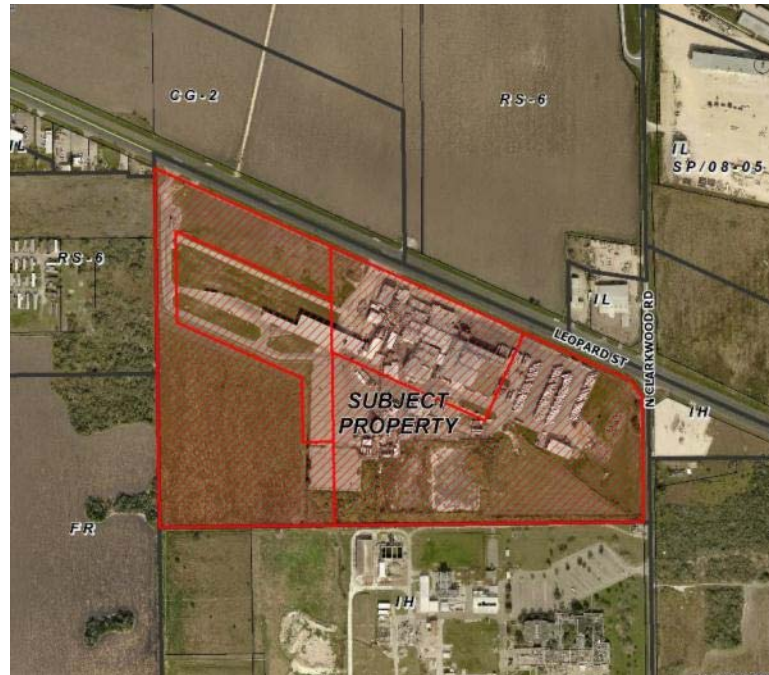


# Aerial Overview



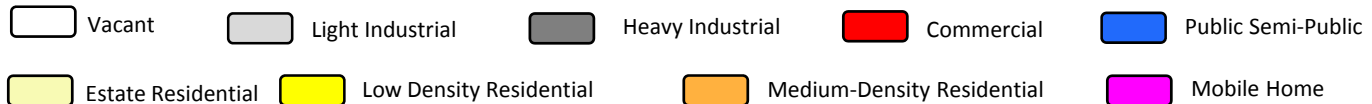
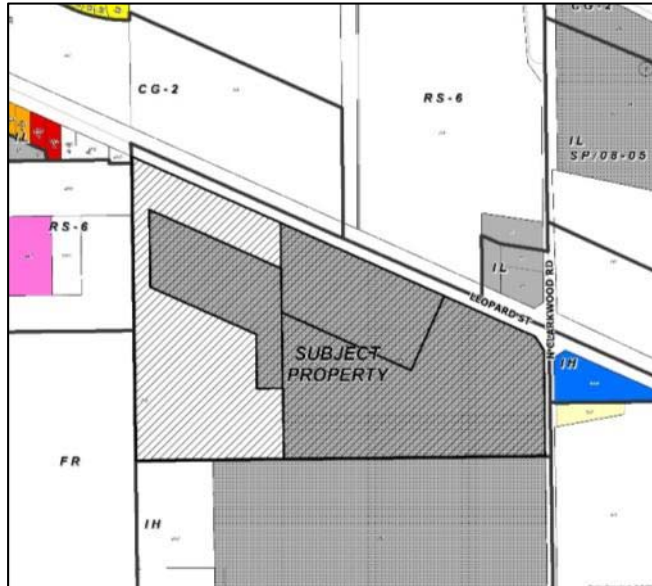


# Aerial





## Existing Land Use

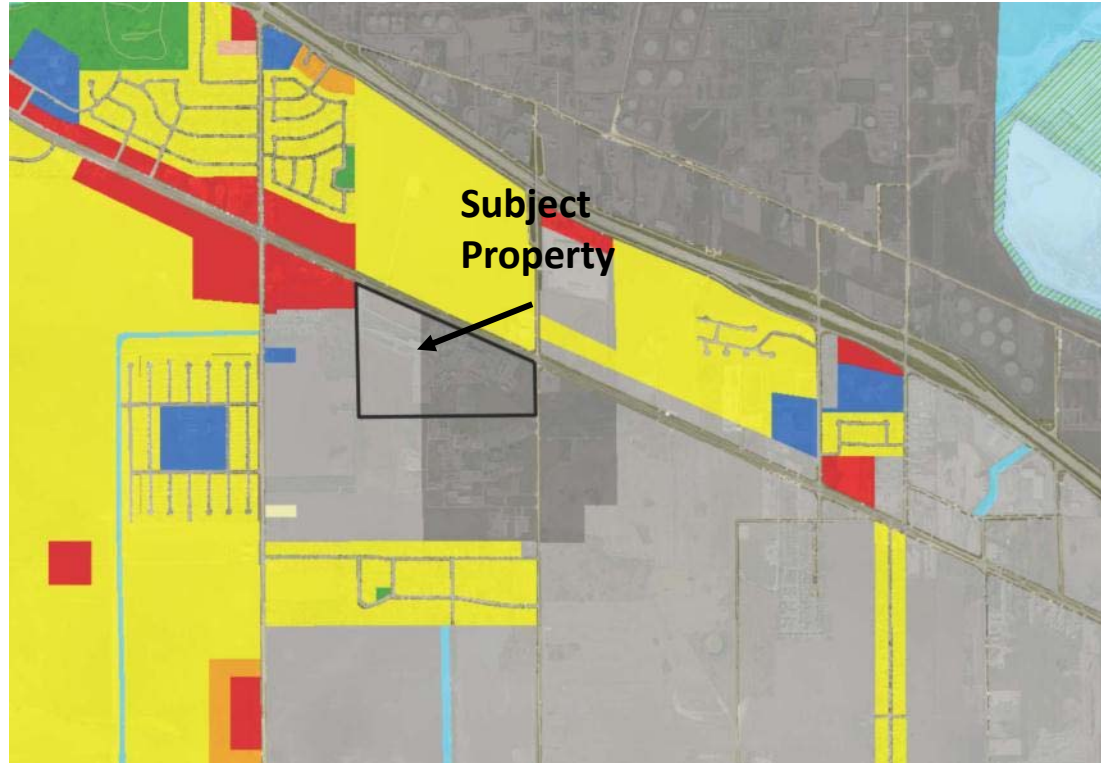


## Future Land Use





# Future Land Use Map







# Subject Property





# East Along Leopard Street





# North Across Leopard St.

---







# South on Clarkwood





# Public Notification

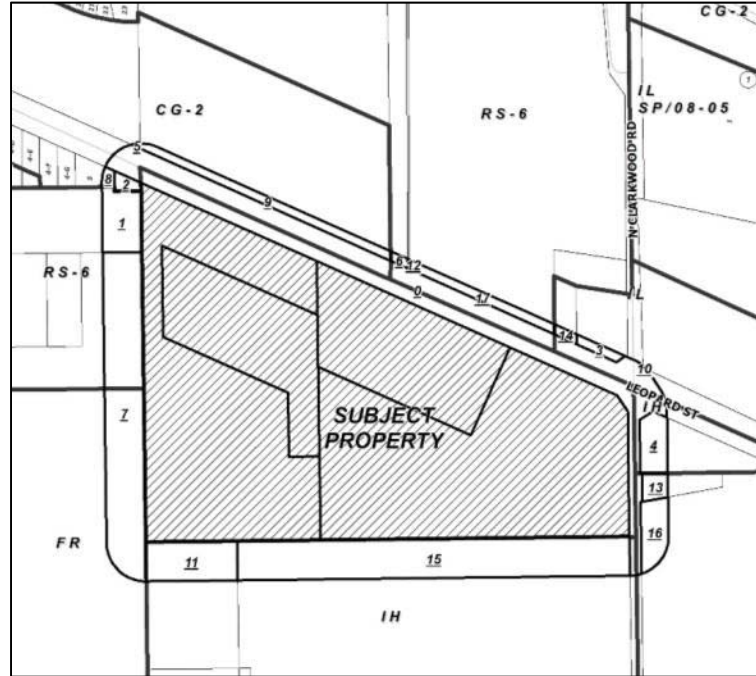
17 Notices mailed inside 200' buffer  
3 Notices mailed outside 200' buffer

Notification Area

Opposed: 0 (0.00%)



In Favor: 0





# Staff Recommendation

---

Approval of the  
“IH” Heavy Industrial District