



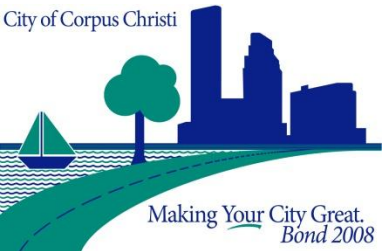
City of
Corpus
Christi

Corpus Christi Beach Entry Development Re-Bid (Bond 2008)

Council Presentation

June 26, 2012

City of Corpus Christi



Making Your City Great.
Bond 2008

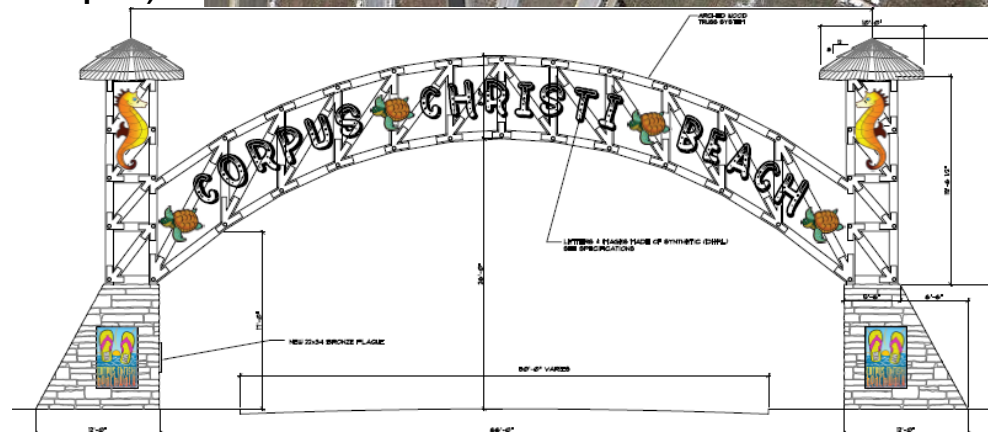
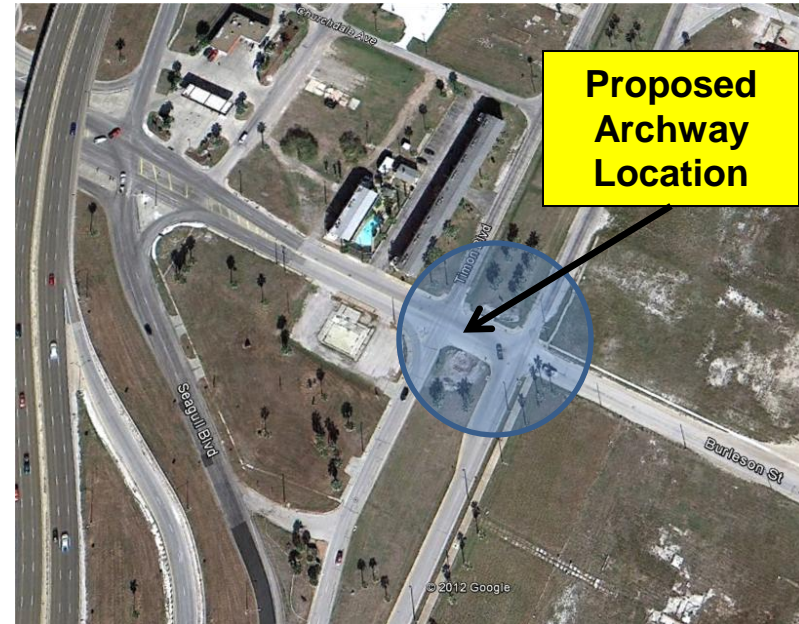


CORPUS
CHRISTI
PARKS &
RECREATION

Project Scope

Entry Archway

- Wood Truss Archway Spanning over Burleson Street (Between Timon and Surfside)
- Landscaping and Irrigation
- Graphics Letters and Images (Seahorses, Turtles & Sandals Plaque)



Project Schedule

2012										
Jan	Feb	Mar	Apr	May	Jun	Jul	Aug	Sep	Oct	Nov
Design			Bid & Award			Construction				

Project Estimate: 120 Calendar Days ≈ 4 Months

Projected Schedule reflects City Council award in June 2012 with anticipated construction completion in November 2012.



City of
Corpus
Christi

Project Budget

FUNDS AVAILABLE:	
Corpus Christi Beach Entry Development (Bond 2008)	\$200,000.00
Ordinance Amending 2011-2012 Capital Budget	<u>425,153.51</u>
	\$625,153.51
FUNDS REQUIRED:	
Construction (Largin Construction, LLC.)	\$404,960.93
Contingencies (10%)	40,496.09
<u>Consultant Fees:</u>	
Consultant (Wright Architects) *	42,957.00
BlueBay Construction	23,828.13
Materials Testing & Windstorm Certification	11,717.50
<u>Reimbursements:</u>	<u>101,193.86</u>
TOTAL	\$625,153.51
ESTIMATED PROJECT BUDGET BALANCE	\$0.00

City of Corpus Christi



Making Your City Great.
Bond 2008



**CORPUS
CHRISTI
PARKS &
RECREATION**