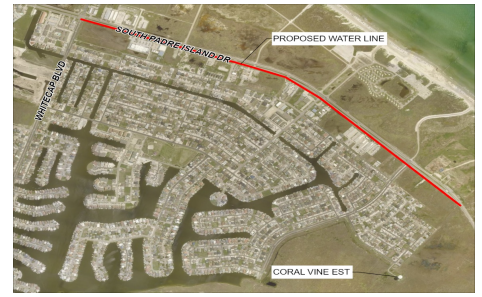


## Capital Improvement Plan Project Pages

### Corpus Christi, Texas



**Project #** 23021  
**Project Name** Sand Dollar Connection Line 16-inch (Coral Vine)

<b>Contact</b>	Director of Corpus Christi Water	<b>Department</b>	Water
<b>Type</b>	Improvement/Additions	<b>Category</b>	Water Distribution
<b>Priority</b>	Priority Level 2	<b>Status</b>	Active
<b>Useful Life</b>	40 years	<b>Council District</b>	4

#### Description

This project is designed to extend an existing 16" water line from White Cap to the Coral Vine elevated storage tank and implement water interconnections as needed. This infrastructure will allow the Sand Dollar pump station to more easily control operation of the elevated storage tank on Padre Island and provide adequate supply for the anticipated growth. The project scope includes design and installation of a redundant 20" waterline from the Sand Dollar Pump Station to the distribution system.

#### Justification

Strengthening of the distribution system is crucial to ensure normal operations and a reliable water supply to Padre Island.

Expenditures	Prior	FY 26	FY 27	FY 28	Total
Construction/Rehab	4,500,000	7,930,000	0	0	12,430,000
Eng, Admin Reimbursements	330,000	500,000	0	0	830,000
Design	800,000	0	0	0	800,000
<b>Total</b>	<b>5,630,000</b>	<b>8,430,000</b>	<b>0</b>	<b>0</b>	<b>14,060,000</b>

Funding Sources	Prior	FY 26	FY 27	FY 28	Total
Revenue Bonds	5,630,000	8,430,000	0	0	14,060,000
<b>Total</b>	<b>5,630,000</b>	<b>8,430,000</b>	<b>0</b>	<b>0</b>	<b>14,060,000</b>

#### Budget Impact

The implementation of this project should provide resiliency in the system as well as allow for increased growth on Padre Island.