

Attachment 1A – Downtown Group 4 Maps

DT G4-1 – Al Kruse Tennis Center 1.57 Acres: 502 King St.

DT G4-2 – South Bluff Park 9.16 Acres: 500 Tanchua

DT G4-3 – Central Library 1.67 Acres: 805 Comanche

DT G4-4 – City Hall Grounds 9.10 Acres: 1201 Leopard St.

DT G4-5 - Old Sears Property 2.36 Acres: 1100 Leopard, Adjacent to City Hall



DT G4-6 – Dr. H.J. Williams 6.76 Acres: 1506 Minton



DT G4-7 – Old Police Station .47 Acres: 1519 Winnebago St.

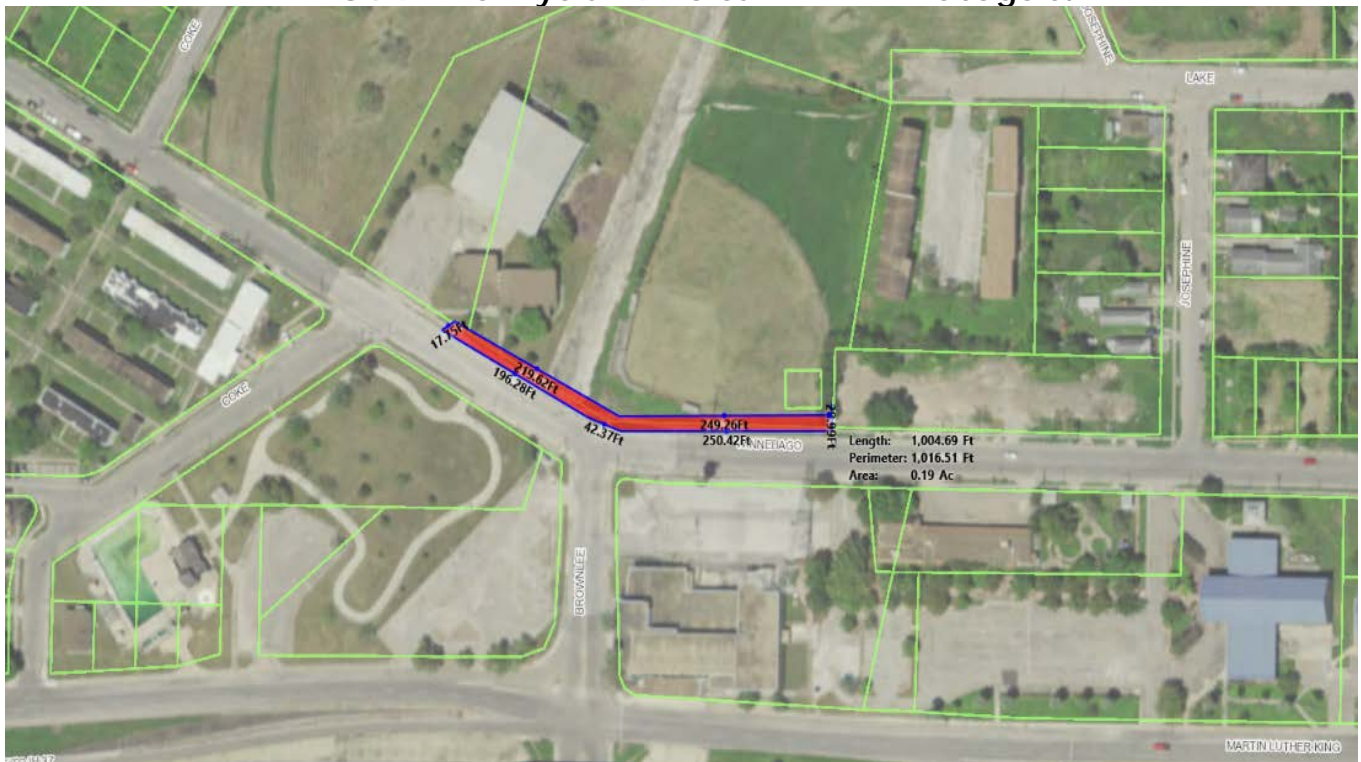




DT G4-8 – Daycare .24 Acres: 1517 Winnebago St.



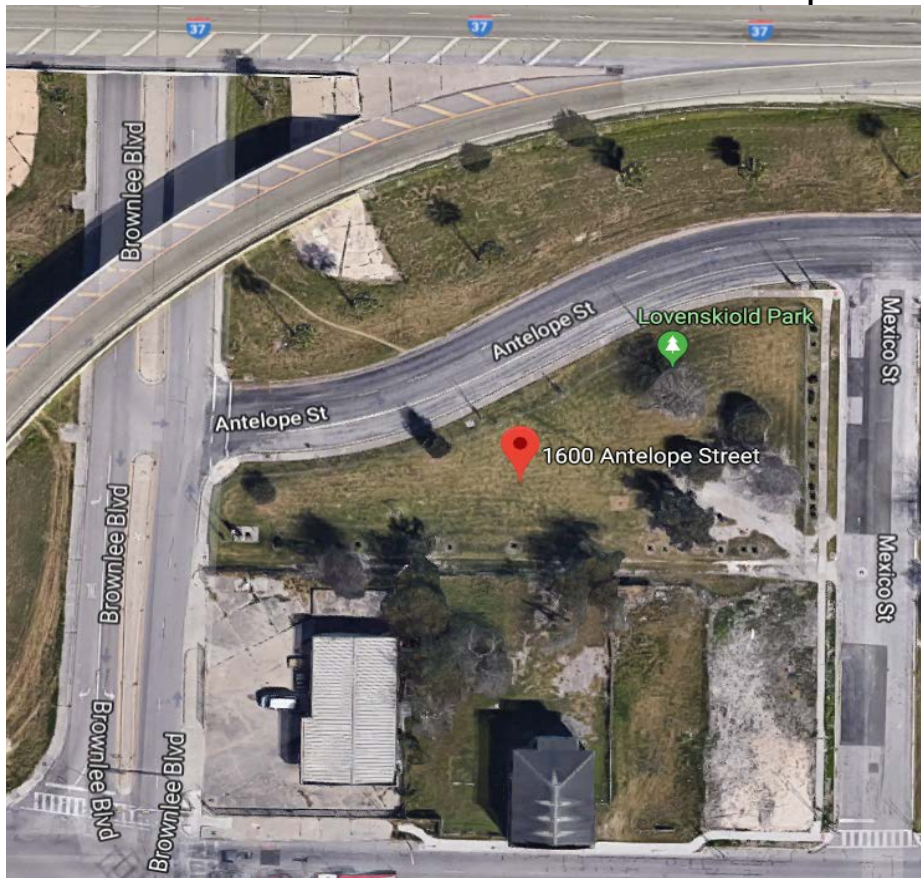
DT G4-9 – T.C. Ayers .19 Acres: 1722 Winnebago St.



DT G4-10 - TC Ayers Pool .46 Acres: 926 Coke St.



DT G4-11 Lovenskiold Park .66 Acres: 1600 Antelope St.

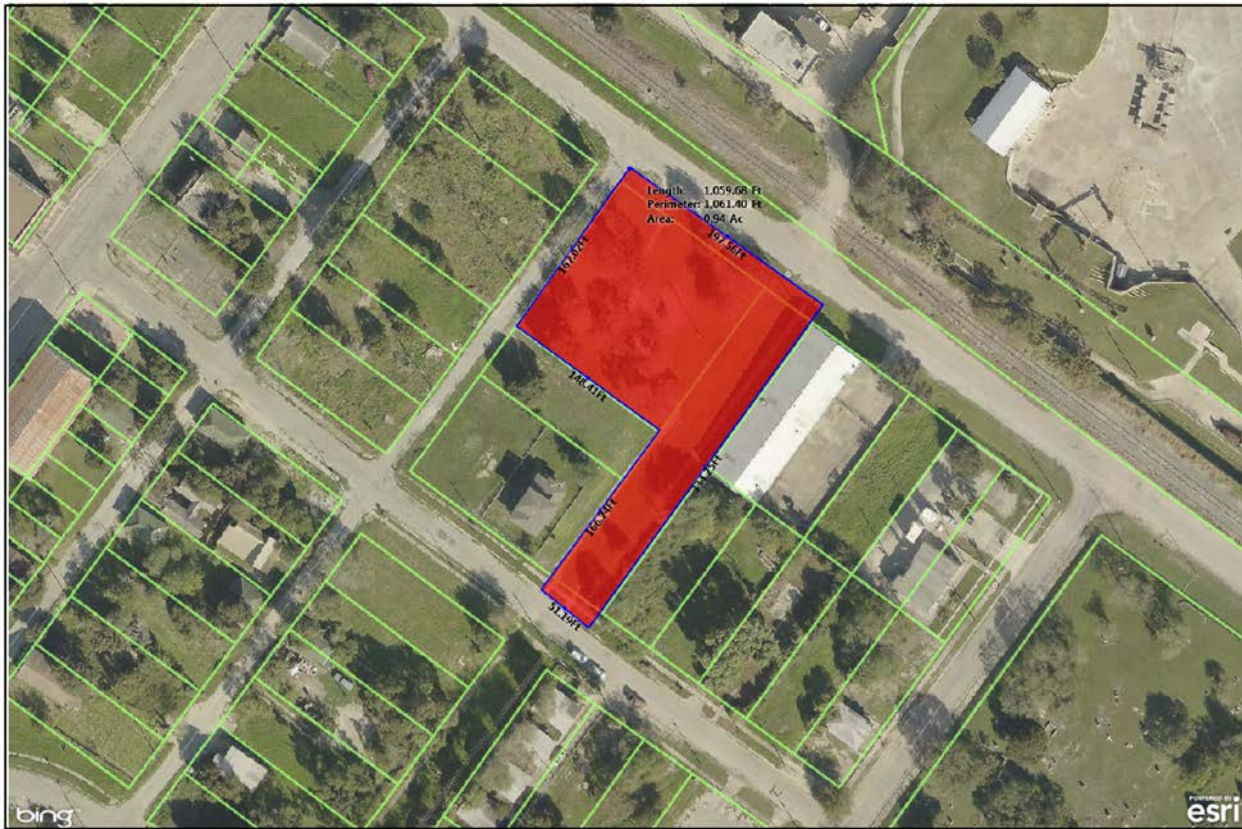




DT G4-12 - Mestina Parking Lot .46 Acres: Mestina and Sam Rankin



DT G4-13 - Cabra 0.94 Acres: 1323 W. Broadway

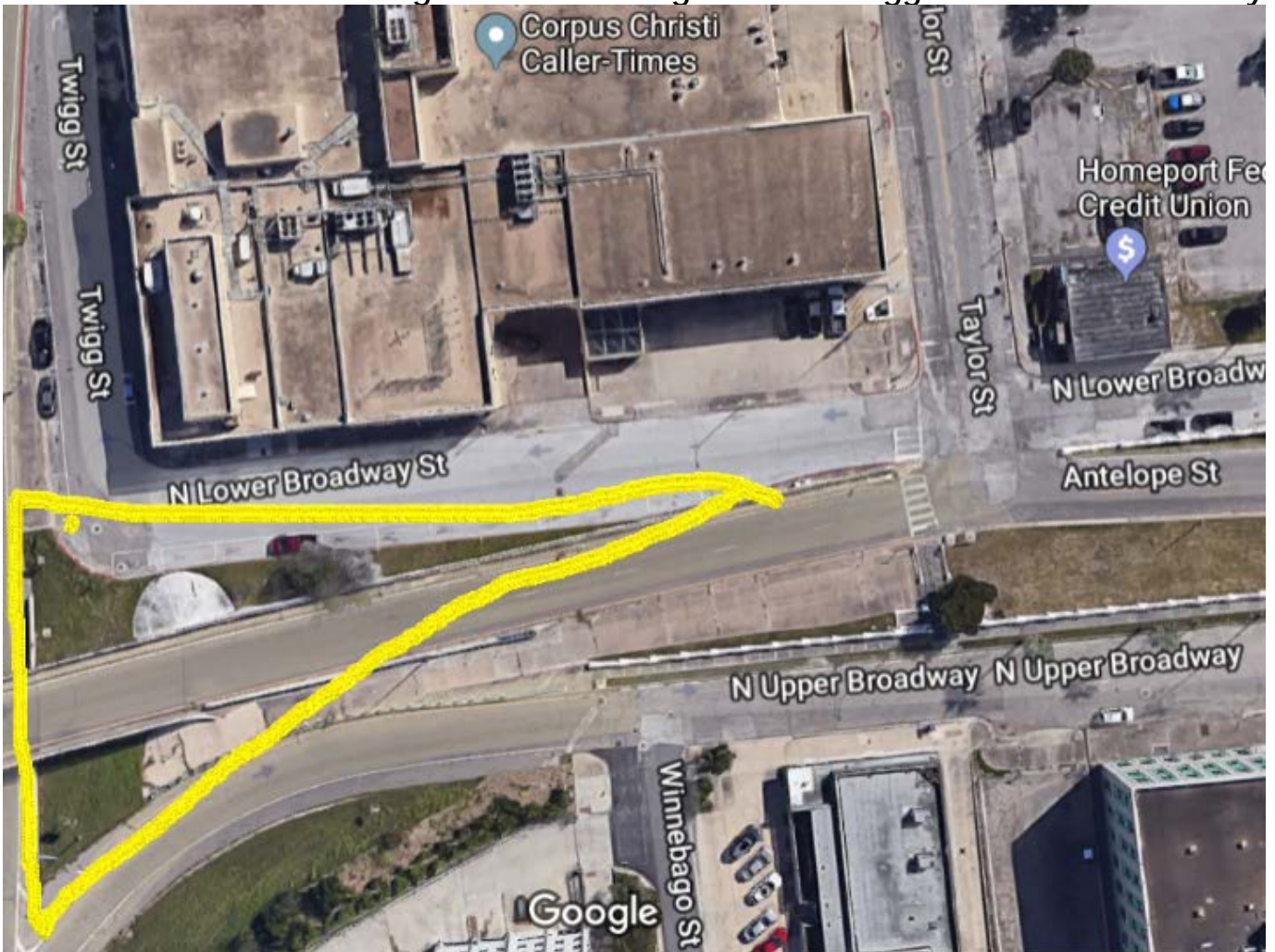




DT G4-14 - Cabra Alley .34 Acres: Between Ramirez and Chipito



DT G4-15 - Caller Times Triangle behind building 16 Acres: Twigg and N Lower Broadway

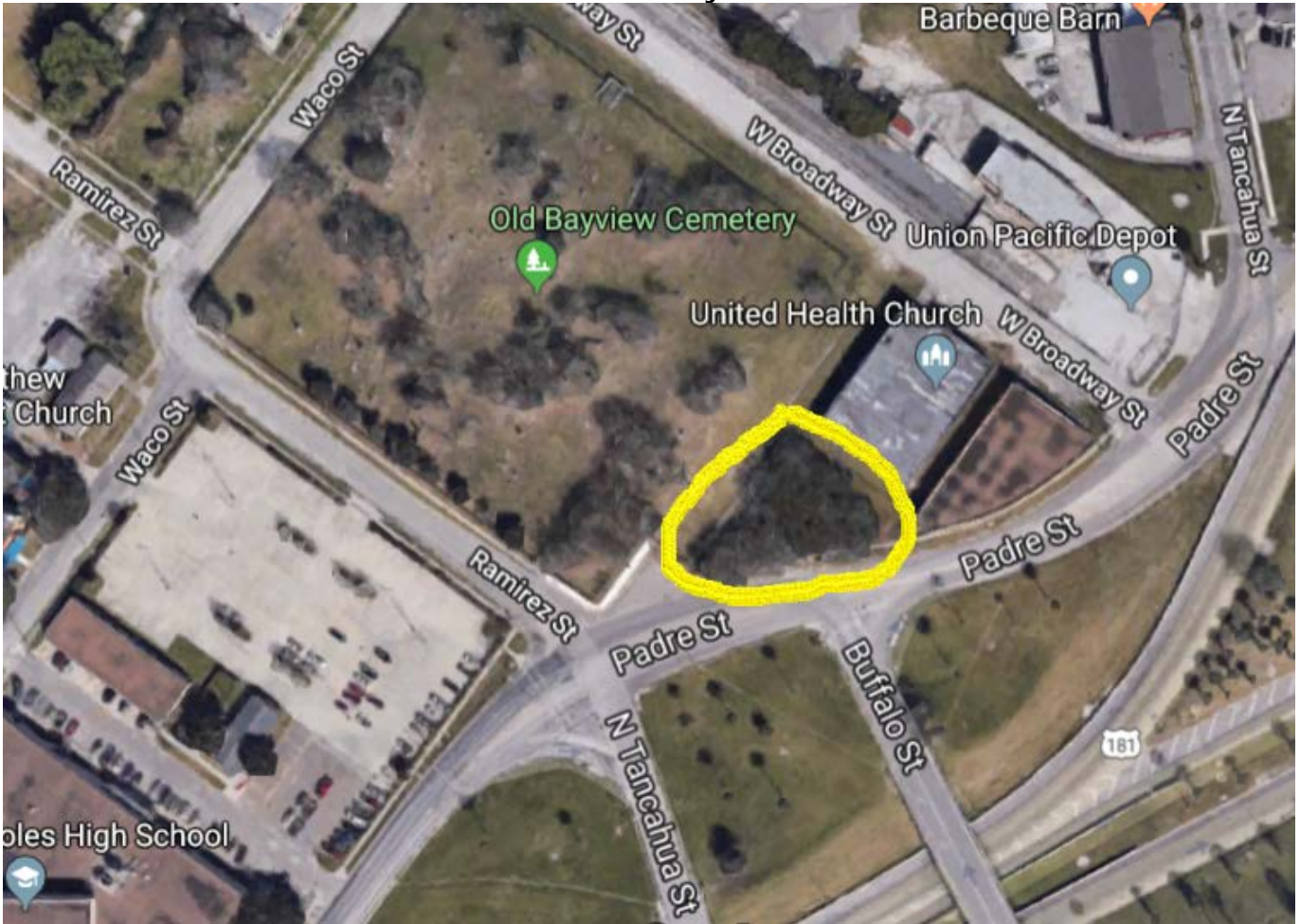




DT G4-16 – Antelope .18 Acres: Between Taylor and Peoples



DT G4-17 – Ramirez Triangle 0.31 Acres: Off Padre at Buffalo next to Old Bayview Cemetery



DT G4-18 - Winnebago Triangles (2) .14 Acres: Waco and Martin Luther King Dr.

