

STATE OF TEXAS \$  
 COUNTY OF NUECES \$  
 I, NIXON M. WELSH, REGISTERED PROFESSIONAL LAND SURVEYOR OF BASS & WELSH ENGINEERING, HEREBY CERTIFY THAT THE FOREGOING PLAT WAS PREPARED FROM A SURVEY MADE ON THE GROUND UNDER MY DIRECTION AND IS TRUE AND CORRECT.  
 THIS THE \_\_\_\_ DAY OF \_\_\_\_\_, 20\_\_\_\_.

NIXON M. WELSH  
 REGISTERED PROFESSIONAL LAND SURVEYOR, TEXAS NUMBER 2211

STATE OF TEXAS \$  
 COUNTY OF \_\_\_\_\_ \$  
 WE, TEXAS CAPITAL BANK, N. A., HEREBY CERTIFY THAT WE ARE THE HOLDERS OF A LIEN ON LAND DESCRIBED WITHIN THE BOUNDARIES OF THE FOREGOING MAP AND THAT WE APPROVE THIS DESIGN AND DESIGNATION FOR THE PURPOSES AND CONSIDERATIONS THEREIN EXPRESSED.  
 BY: \_\_\_\_\_  
 TITLE: \_\_\_\_\_

STATE OF TEXAS \$  
 COUNTY OF \_\_\_\_\_ \$  
 THIS INSTRUMENT WAS ACKNOWLEDGED BEFORE ME BY \_\_\_\_\_ (NAME), \_\_\_\_\_ (TITLE) OF TEXAS CAPITAL BANK, N. A.  
 THIS THE \_\_\_\_ DAY OF \_\_\_\_\_, 20\_\_\_\_.

NOTARY PUBLIC IN AND FOR THE STATE OF TEXAS

STATE OF TEXAS \$  
 COUNTY OF NUECES \$  
 THE FINAL PLAT OF THE HEREIN DESCRIBED PROPERTY WAS APPROVED BY THE DEPARTMENT OF DEVELOPMENT SERVICES OF THE CITY OF CORPUS CHRISTI, TEXAS.  
 THIS THE \_\_\_\_ DAY OF \_\_\_\_\_, 20\_\_\_\_.

ARMANDO GUTIERREZ, JR., P.E.  
 DEVELOPMENT SERVICES ENGINEER

DATE \_\_\_\_\_

STATE OF TEXAS \$  
 COUNTY OF NUECES \$  
 THE FINAL PLAT OF THE HEREIN DESCRIBED PROPERTY WAS APPROVED BY THE PLANNING COMMISSION ON BEHALF OF THE CITY OF CORPUS CHRISTI, TEXAS.  
 THIS THE \_\_\_\_ DAY OF \_\_\_\_\_, 20\_\_\_\_.

CHAIRMAN  
 RUDY GARZA

DANIEL MCGINN, A.I.C.P.  
 SENIOR CITY PLANNER

STATE OF TEXAS \$  
 COUNTY OF NUECES \$  
 I, DIANA BARRERA, CLERK OF THE COUNTY COURT IN AND FOR SAID COUNTY, DO HEREBY CERTIFY THAT THE FOREGOING INSTRUMENT DATED THE \_\_\_\_ DAY OF \_\_\_\_\_, 20\_\_\_\_ WITH ITS CERTIFICATE OF AUTHENTICATION, WAS FILED FOR RECORD IN MY OFFICE THE \_\_\_\_ DAY OF \_\_\_\_\_, 20\_\_\_\_ AT \_\_\_\_\_ O'CLOCK \_\_\_\_ M., AND DULY RECORDED THE \_\_\_\_ DAY OF \_\_\_\_\_, 20\_\_\_\_ AT \_\_\_\_\_ O'CLOCK \_\_\_\_ M. IN THE MAP RECORDS OF SAID COUNTY IN VOLUME \_\_\_\_\_, PAGE \_\_\_\_\_, INSTRUMENT NUMBER \_\_\_\_\_.

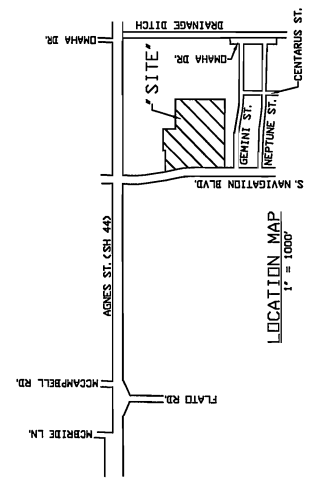
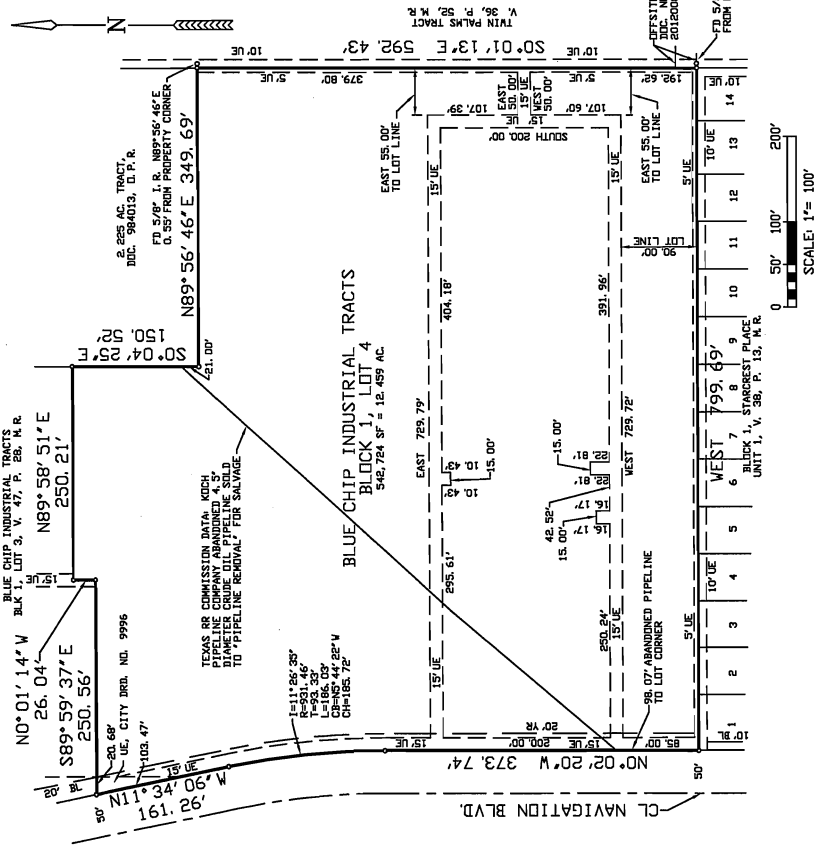
DIANA BARRERA, CLERK  
 COUNTY COURT NUECES  
 COUNTY, TEXAS

WITNESS MY HAND AND SEAL OF THE COUNTY COURT IN AND FOR THE COUNTY OF NUECES CHRISTI, TEXAS, THIS \_\_\_\_ DAY AND YEAR LAST WRITTEN.

BY: \_\_\_\_\_ DEPUTY

DIANA BARRERA, CLERK  
 COUNTY COURT NUECES  
 COUNTY, TEXAS

- NOTES:
1. THE YARD REQUIREMENT, AS DEPICTED, IS A REQUIREMENT OF THE (UDC) UNIFIED DEVELOPMENT CODE AND IS SUBJECT TO CHANGE AS THE ZONING MAY CHANGE.
  2. THE RECEIVING WATER FOR THE STORM WATER RUNOFF FROM THIS PROPERTY IS THE OSO CREEK. THE TCEO HAS NOT CLASSIFIED THE AQUATIC LIFE USE FOR THE OSO CREEK, BUT IT IS RECOGNIZED AS AN ENVIRONMENTALLY SENSITIVE AREA. THE OSO CREEK FLOWS WEST INTO THE OSO BAY AS "EXCEPTIONAL" AND "OCEANIC" WATERS. THE RECEIVING WATER AS "CONTACT RECREATION" USE.
  3. THE SUBJECT SITE USES IN FEMA ZONE "C" PURSUANT TO FEMA F 600 INSURANCE MAPS COMMUNITY PANEL #85476ES, CITY OF CORPUS CHRISTI, NUECES COUNTY, TEXAS, REVISED JULY 18, 1985.
  4. SET 5/8" I.R.'S AT ALL CORNERS UNLESS OTHERWISE NOTED.
  5. STARCREST PLACE UNIT 1, V. 38, P. 13, H. R., WEST, AS SHOWN.
  6. IF ANY LOT IS DEVELOPED WITH RESIDENTIAL USES, COMPLIANCE WITH PUBLIC OPEN SPACE REGULATIONS WILL BE REQUIRED DURING THE BUILDING PERMIT PHASE.



**PLAT OF  
 BLUE CHIP INDUSTRIAL TRACTS,  
 BLOCK 1, LOT 4.**

A 12.459 ACRE TRACT OF LAND, MORE OR LESS, A PORTION OF J. C. RUSSELL, V. 28, P. 58 & 59, MAP RECORDS, NUECES CO., TX

**CORPUS CHRISTI, NUECES COUNTY, TX**

BASS & WELSH ENGINEERING  
 3054 S. ALAMEDA STREET  
 CORPUS CHRISTI, TEXAS 78404

DATE PLOTTED: 5/10/12  
 COMP. AND PLOTTING SCALE: 1" = 100'  
 SHEET 1 OF 1

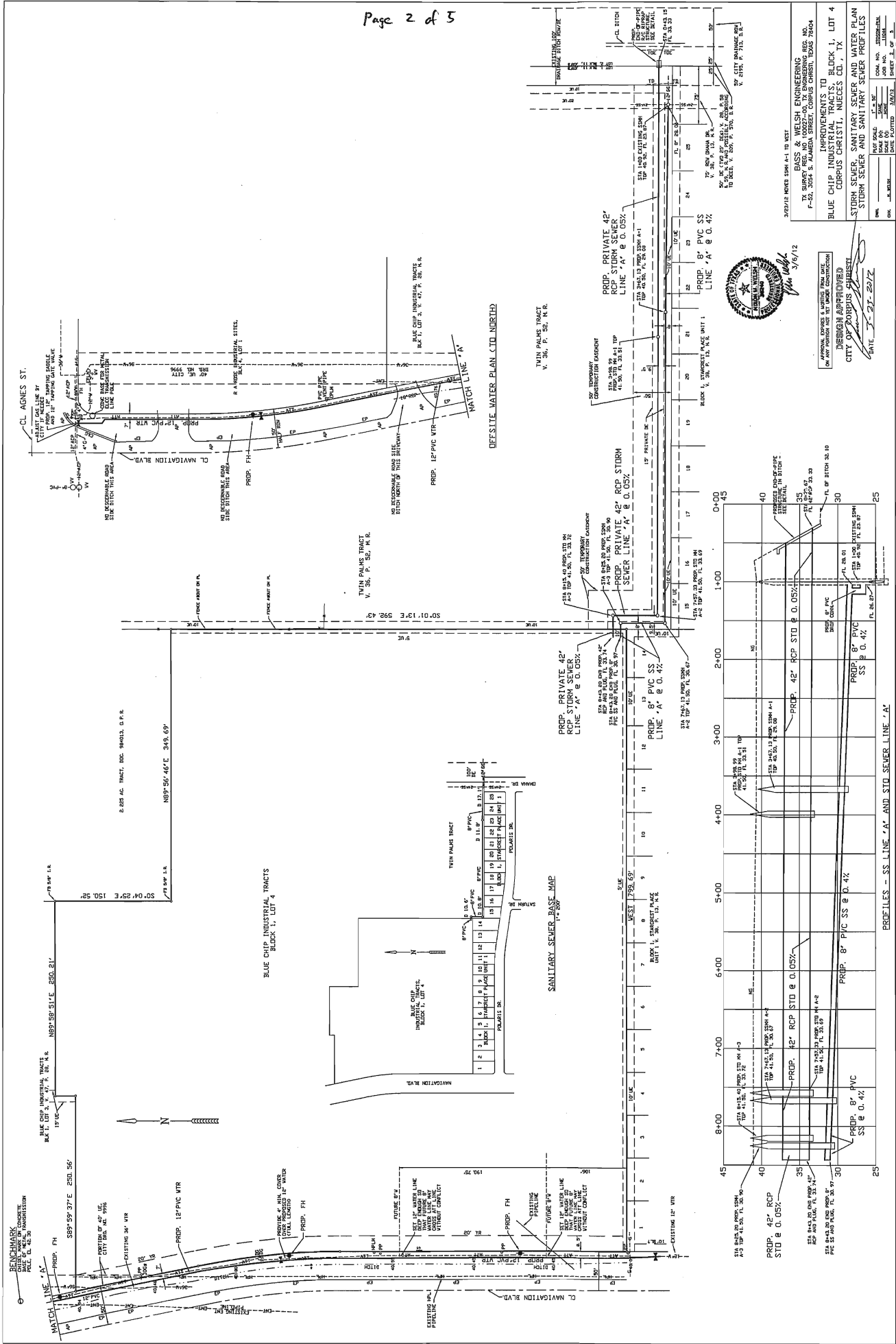
STATE OF TEXAS \$  
 COUNTY OF \_\_\_\_\_ \$  
 WE, HUNTER CC I, LP, A TEXAS LIMITED PARTNERSHIP, HEREBY CERTIFY THAT WE ARE THE OWNERS OF THE LAND EMBRACED WITHIN THE BOUNDARIES OF THE FOREGOING PLAT AND THAT WE APPROVE THIS DESIGN AND DESIGNATION FOR THE PURPOSES AND CONSIDERATIONS THEREIN EXPRESSED, AND THAT THE LAND SURVEYED AND SUBDIVIDED AS SHOWN, THAT STREETS AND EASEMENTS AS SHOWN HAVE BEEN HERETOFORE DEDICATED, OR IF NOT PREVIOUSLY DEDICATED, ARE HEREBY DEDICATED TO THE PUBLIC USE FOREVER, AND THAT THIS PLAT WAS MADE FOR THE PURPOSES OF DESCRIPTION AND DESIGNATION.

HUNTER CC I, LP, A TEXAS LIMITED PARTNERSHIP  
 BY: HUNTER D. LUC, A TEXAS LIMITED LIABILITY COMPANY, ITS GENERAL PARTNER  
 BY: SCOTT ROHRMAN, MANAGER

STATE OF TEXAS \$  
 COUNTY OF \_\_\_\_\_ \$  
 THIS INSTRUMENT WAS ACKNOWLEDGED BEFORE ME ON THE \_\_\_\_ DAY OF \_\_\_\_\_, 2012, BY SCOTT ROHRMAN, GENERAL PARTNER OF HUNTER CC I, LP, A TEXAS LIMITED PARTNERSHIP, FOR AND ON BEHALF OF SAID PARTNERSHIP.  
 THIS THE \_\_\_\_ DAY OF \_\_\_\_\_, 20\_\_\_\_.

NOTARY PUBLIC IN AND FOR THE STATE OF TEXAS





3/27/15 MODIFIED FROM A-1 TO WEST

BASS & WELSH ENGINEERING  
 TX SURVEY REG. NO. 10007-00, TX ENGINEERING REG. NO. 1-21, 2024 S. AUSTIN AVE., CORPUS CHRISTI, TEXAS 78404

MOVEMENTS TO BLOCK 1, LOT 4  
 BLUE CHIP INDUSTRIAL TRACTS  
 CORPUS CHRISTI, NUECES CO., TX

STORM SEWER, SANITARY SEWER AND WATER PLAN  
 STORM SEWER AND SANITARY SEWER PROFILES

DATE: 3-27-2017

DESIGN APPROVED  
 CITY OF CORPUS CHRISTI

DATE: 3-27-2017

PROFILES - SS LINE 'A' AND STD SEWER LINE 'A'

Station	Profile 1 (SS)	Profile 2 (STD)
0+00	30.00	30.00
1+00	30.00	30.00
2+00	30.00	30.00
3+00	30.00	30.00
4+00	30.00	30.00
5+00	30.00	30.00
6+00	30.00	30.00
7+00	30.00	30.00
8+00	30.00	30.00

**MANHOLE AND INLET DETAILS**

**STANDARD STORM WATER MANHOLE RING AND COVER**

**INLET AND SIDEWALK**

**STANDARD STORM WATER**

**DETAILS**

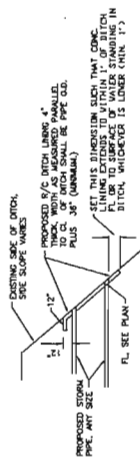
Department of Engineering Services  
CITY OF HOUSTON  
CORPUS CHRISTI

**TRENCH BACKFILL AND PAVEMENT REPAIR FOR STORM WATER LINES**

**GENERAL NOTES FOR BACKFILL**

**GENERAL NOTES FOR PAVEMENT REPAIR**

Department of Engineering Services  
CITY OF HOUSTON  
CORPUS CHRISTI



**TYPICAL SECTION - PROPOSED CONCRETE LINING IN DITCH AT END OF PROPOSED STG. PIPE**

ITEM	DESCRIPTION	QTY	UNIT
1	12" PIP	1296	LF
2	12" GATE VALVE	3	EA
3	12" 90° W/ ANGLE	2	EA
4	12" 45° W/ ANGLE	4	EA
5	12" TAPPING SALES W/IN	1	EA
6	12" TAPPING GATE VALVE	4	EA
7	12" FIRE HYDRANT ASST	4	EA
8	12" GATE VALVE	4	EA
9	12" 90° W/ ANGLE	4	EA
10	12" 45° W/ ANGLE	8	EA
11	12" TAPPING SALES W/IN	1	EA
12	12" TAPPING GATE VALVE	4	EA
13	12" FIRE HYDRANT ASST	4	EA
14	12" GATE VALVE	4	EA
15	12" 90° W/ ANGLE	4	EA
16	12" 45° W/ ANGLE	8	EA
17	12" TAPPING SALES W/IN	1	EA
18	12" TAPPING GATE VALVE	4	EA
19	12" FIRE HYDRANT ASST	4	EA
20	12" GATE VALVE	4	EA
21	12" 90° W/ ANGLE	4	EA
22	12" 45° W/ ANGLE	8	EA
23	12" TAPPING SALES W/IN	1	EA
24	12" TAPPING GATE VALVE	4	EA
25	12" FIRE HYDRANT ASST	4	EA
26	12" GATE VALVE	4	EA
27	12" 90° W/ ANGLE	4	EA
28	12" 45° W/ ANGLE	8	EA
29	12" TAPPING SALES W/IN	1	EA
30	12" TAPPING GATE VALVE	4	EA
31	12" FIRE HYDRANT ASST	4	EA
32	12" GATE VALVE	4	EA
33	12" 90° W/ ANGLE	4	EA
34	12" 45° W/ ANGLE	8	EA
35	12" TAPPING SALES W/IN	1	EA
36	12" TAPPING GATE VALVE	4	EA
37	12" FIRE HYDRANT ASST	4	EA
38	12" GATE VALVE	4	EA
39	12" 90° W/ ANGLE	4	EA
40	12" 45° W/ ANGLE	8	EA
41	12" TAPPING SALES W/IN	1	EA
42	12" TAPPING GATE VALVE	4	EA
43	12" FIRE HYDRANT ASST	4	EA
44	12" GATE VALVE	4	EA
45	12" 90° W/ ANGLE	4	EA
46	12" 45° W/ ANGLE	8	EA
47	12" TAPPING SALES W/IN	1	EA
48	12" TAPPING GATE VALVE	4	EA
49	12" FIRE HYDRANT ASST	4	EA
50	12" GATE VALVE	4	EA
51	12" 90° W/ ANGLE	4	EA
52	12" 45° W/ ANGLE	8	EA
53	12" TAPPING SALES W/IN	1	EA
54	12" TAPPING GATE VALVE	4	EA
55	12" FIRE HYDRANT ASST	4	EA
56	12" GATE VALVE	4	EA
57	12" 90° W/ ANGLE	4	EA
58	12" 45° W/ ANGLE	8	EA
59	12" TAPPING SALES W/IN	1	EA
60	12" TAPPING GATE VALVE	4	EA
61	12" FIRE HYDRANT ASST	4	EA
62	12" GATE VALVE	4	EA
63	12" 90° W/ ANGLE	4	EA
64	12" 45° W/ ANGLE	8	EA
65	12" TAPPING SALES W/IN	1	EA
66	12" TAPPING GATE VALVE	4	EA
67	12" FIRE HYDRANT ASST	4	EA
68	12" GATE VALVE	4	EA
69	12" 90° W/ ANGLE	4	EA
70	12" 45° W/ ANGLE	8	EA
71	12" TAPPING SALES W/IN	1	EA
72	12" TAPPING GATE VALVE	4	EA
73	12" FIRE HYDRANT ASST	4	EA
74	12" GATE VALVE	4	EA
75	12" 90° W/ ANGLE	4	EA
76	12" 45° W/ ANGLE	8	EA
77	12" TAPPING SALES W/IN	1	EA
78	12" TAPPING GATE VALVE	4	EA
79	12" FIRE HYDRANT ASST	4	EA
80	12" GATE VALVE	4	EA
81	12" 90° W/ ANGLE	4	EA
82	12" 45° W/ ANGLE	8	EA
83	12" TAPPING SALES W/IN	1	EA
84	12" TAPPING GATE VALVE	4	EA
85	12" FIRE HYDRANT ASST	4	EA
86	12" GATE VALVE	4	EA
87	12" 90° W/ ANGLE	4	EA
88	12" 45° W/ ANGLE	8	EA
89	12" TAPPING SALES W/IN	1	EA
90	12" TAPPING GATE VALVE	4	EA
91	12" FIRE HYDRANT ASST	4	EA
92	12" GATE VALVE	4	EA
93	12" 90° W/ ANGLE	4	EA
94	12" 45° W/ ANGLE	8	EA
95	12" TAPPING SALES W/IN	1	EA
96	12" TAPPING GATE VALVE	4	EA
97	12" FIRE HYDRANT ASST	4	EA
98	12" GATE VALVE	4	EA
99	12" 90° W/ ANGLE	4	EA
100	12" 45° W/ ANGLE	8	EA
101	12" TAPPING SALES W/IN	1	EA
102	12" TAPPING GATE VALVE	4	EA
103	12" FIRE HYDRANT ASST	4	EA
104	12" GATE VALVE	4	EA
105	12" 90° W/ ANGLE	4	EA
106	12" 45° W/ ANGLE	8	EA
107	12" TAPPING SALES W/IN	1	EA
108	12" TAPPING GATE VALVE	4	EA
109	12" FIRE HYDRANT ASST	4	EA
110	12" GATE VALVE	4	EA
111	12" 90° W/ ANGLE	4	EA
112	12" 45° W/ ANGLE	8	EA
113	12" TAPPING SALES W/IN	1	EA
114	12" TAPPING GATE VALVE	4	EA
115	12" FIRE HYDRANT ASST	4	EA
116	12" GATE VALVE	4	EA
117	12" 90° W/ ANGLE	4	EA
118	12" 45° W/ ANGLE	8	EA
119	12" TAPPING SALES W/IN	1	EA
120	12" TAPPING GATE VALVE	4	EA
121	12" FIRE HYDRANT ASST	4	EA
122	12" GATE VALVE	4	EA
123	12" 90° W/ ANGLE	4	EA
124	12" 45° W/ ANGLE	8	EA
125	12" TAPPING SALES W/IN	1	EA
126	12" TAPPING GATE VALVE	4	EA
127	12" FIRE HYDRANT ASST	4	EA
128	12" GATE VALVE	4	EA
129	12" 90° W/ ANGLE	4	EA
130	12" 45° W/ ANGLE	8	EA
131	12" TAPPING SALES W/IN	1	EA
132	12" TAPPING GATE VALVE	4	EA
133	12" FIRE HYDRANT ASST	4	EA
134	12" GATE VALVE	4	EA
135	12" 90° W/ ANGLE	4	EA
136	12" 45° W/ ANGLE	8	EA
137	12" TAPPING SALES W/IN	1	EA
138	12" TAPPING GATE VALVE	4	EA
139	12" FIRE HYDRANT ASST	4	EA
140	12" GATE VALVE	4	EA
141	12" 90° W/ ANGLE	4	EA
142	12" 45° W/ ANGLE	8	EA
143	12" TAPPING SALES W/IN	1	EA
144	12" TAPPING GATE VALVE	4	EA
145	12" FIRE HYDRANT ASST	4	EA
146	12" GATE VALVE	4	EA
147	12" 90° W/ ANGLE	4	EA
148	12" 45° W/ ANGLE	8	EA
149	12" TAPPING SALES W/IN	1	EA
150	12" TAPPING GATE VALVE	4	EA
151	12" FIRE HYDRANT ASST	4	EA
152	12" GATE VALVE	4	EA
153	12" 90° W/ ANGLE	4	EA
154	12" 45° W/ ANGLE	8	EA
155	12" TAPPING SALES W/IN	1	EA
156	12" TAPPING GATE VALVE	4	EA
157	12" FIRE HYDRANT ASST	4	EA
158	12" GATE VALVE	4	EA
159	12" 90° W/ ANGLE	4	EA
160	12" 45° W/ ANGLE	8	EA
161	12" TAPPING SALES W/IN	1	EA
162	12" TAPPING GATE VALVE	4	EA
163	12" FIRE HYDRANT ASST	4	EA
164	12" GATE VALVE	4	EA
165	12" 90° W/ ANGLE	4	EA
166	12" 45° W/ ANGLE	8	EA
167	12" TAPPING SALES W/IN	1	EA
168	12" TAPPING GATE VALVE	4	EA
169	12" FIRE HYDRANT ASST	4	EA
170	12" GATE VALVE	4	EA
171	12" 90° W/ ANGLE	4	EA
172	12" 45° W/ ANGLE	8	EA
173	12" TAPPING SALES W/IN	1	EA
174	12" TAPPING GATE VALVE	4	EA
175	12" FIRE HYDRANT ASST	4	EA
176	12" GATE VALVE	4	EA
177	12" 90° W/ ANGLE	4	EA
178	12" 45° W/ ANGLE	8	EA
179	12" TAPPING SALES W/IN	1	EA
180	12" TAPPING GATE VALVE	4	EA
181	12" FIRE HYDRANT ASST	4	EA
182	12" GATE VALVE	4	EA
183	12" 90° W/ ANGLE	4	EA
184	12" 45° W/ ANGLE	8	EA
185	12" TAPPING SALES W/IN	1	EA
186	12" TAPPING GATE VALVE	4	EA
187	12" FIRE HYDRANT ASST	4	EA
188	12" GATE VALVE	4	EA
189	12" 90° W/ ANGLE	4	EA
190	12" 45° W/ ANGLE	8	EA
191	12" TAPPING SALES W/IN	1	EA
192	12" TAPPING GATE VALVE	4	EA
193	12" FIRE HYDRANT ASST	4	EA
194	12" GATE VALVE	4	EA
195	12" 90° W/ ANGLE	4	EA
196	12" 45° W/ ANGLE	8	EA
197	12" TAPPING SALES W/IN	1	EA
198	12" TAPPING GATE VALVE	4	EA
199	12" FIRE HYDRANT ASST	4	EA
200	12" GATE VALVE	4	EA



**BASS AND WELSH ENGINEERING**  
TX REGISTRATION NO. P-22, 2004 S. ALAMEDA STREET  
CORPUS CHRISTI, TEXAS 78401  
DATE: 3/9/12

**APPROVED FOR THE CITY OF HOUSTON**  
BY: [Signature]  
DATE: 3/9/12

**APPROVED CITY STORM WATER DETAILS & ESTIMATE SUMMARY**

PROJECT: BLUE CHIP INDUSTRIAL TRACIS, BLK 1, LOT 4  
CORPUS CHRISTI, NUECES CO., TX

DATE: 3/9/12

**APPROVED FOR THE CITY OF HOUSTON**  
BY: [Signature]  
DATE: 3/9/12

**APPROVED CITY STORM WATER DETAILS & ESTIMATE SUMMARY**

PROJECT: BLUE CHIP INDUSTRIAL TRACIS, BLK 1, LOT 4  
CORPUS CHRISTI, NUECES CO., TX

DATE: 3/9/12





EXHIBIT 3

BLUECHIP INDUSTRIAL TRACTS, BLOCK 1, LOT 4,  
PLATTING REQUIRED IMPROVEMENTS  
COST ESTIMATE

11044-PCE  
3/29/2012

STORM SEWER IMPROVEMENTS		QUANTITY	UNIT	UNIT PRICE	AMOUNT
1.	42" RCP	796	LF	86.50	68,854.00
2.	TYPE "A" MANHOLE	3	EA	4,000.00	12,000.00
3.	R/C RIPRAP STRUCTURE AT PIPE END IN DITCH	1	EA	2,500.00	2,500.00
4.	PLUG AT PIPE END	1	EA	500.00	500.00
5.	CLEARING AND GRUBBING ASSOCIATED WITH STORM SEWER	1	LS	1,500.00	1,500.00
6.	TRENCH SAFETY FOR STORM SEWER	796	LF	2.00	1,592.00

**TOTAL STREET IMPROVEMENT ITEMS \$86,946.00**

SANITARY SEWER IMPROVEMENTS		QUANTITY	UNIT	UNIT PRICE	AMOUNT
1.	8" PVC PIPE	737	LF	66.50	49,010.50
2.	8" PVC PIPE DROP CONNECTION	1	LS	6,500.00	6,500.00
3.	MANHOLE, FG	3	EA	4,500.00	13,500.00
4.	PLUG AT PIPE END	1	EA	600.00	600.00
5.	CLEARING AND GRUBBING ASSOCIATED WITH SANITARY SEWER	1	LS	1,500.00	1,500.00
6.	TRENCH SAFETY FOR SANITARY SEWER	737	LF	3.00	2,211.00

**TOTAL SANITARY SEWER IMPROVEMENTS \$73,321.50**

WATER IMPROVEMENTS		QUANTITY	UNIT	UNIT PRICE	AMOUNT
1.	12" PVC PIPE	1425	LF	34.00	48,450.00
2.	12" GATE VALVE W/BOX	3	EA	2,250.00	6,750.00
3.	12" EL, ANY ANGLE	2	EA	700.00	1,400.00
4.	12" TEE	4	EA	725.00	2,900.00
5.	12" TAPPING SADDLE WITH 12" TAPPING GATE VALVE	1	EA	5,700.00	5,700.00
6.	FIRE HYDRANT ASSY	4	EA	2,100.00	8,400.00
7.	6" GATE VALVE W/BOX	4	EA	900.00	3,600.00
8.	6" EL, ANY ANGLE	4	EA	375.00	1,500.00
9.	6" DIA X 30' PVC PIPE	12	EA	125.00	1,500.00
10.	TRAFFIC CONTROL & BARRICADING DURING CONSTRUCTION AND PREPARE TRAFFIC CONTROL PLAN	1	LS	500.00	500.00
11.	TRENCH SAFETY FOR EXCAVATIONS WHERE WATER LINE IS DEEPER THAN 5'	200	LF	2.00	400.00
12.	PAVEMENT PATCHING	1	LS	2,000.00	2,000.00
13.	ALLOWANCE FOR ADJUSTING GAS LINE AT AGNES ST.	1	LS	6,000.00	6,000.00

**TOTAL WATER ITEMS \$89,100.00**

**SUB-TOTAL \$249,367.50**

**CONSTRUCTION TESTING \$2,300.00**

**SUBTOTAL \$251,667.50**

**10% ENGINEERING and SURVEYING \$25,166.75**

**TOTAL \$276,834.25**

**110% OF TOTAL \$304,517.68**



**CITY OF CORPUS CHRISTI  
DISCLOSURE OF INTERESTS**

City of Corpus Christi ordinance 17112, as amended, requires all persons or firms seeking to do business with the City to provide the following information. Every question must be answered. If the question is not applicable, answer with "NA".

FIRST NAME: Hunter CC I, LP

STREET: 3890 West Northwest Highway, Suite 100 CITY: Dallas, TX ZIP: 75220

FIRM IS:  1. Corporation  2. Partnership  3. Sole Owner  4. Association  5. Other \_\_\_\_\_

**DISCLOSURE QUESTIONS**

If additional space is necessary, please use the reverse side of this page or attach separate sheet.

1. State the names of each "employee" of the City of Corpus Christi having an "ownership interest" constituting 3% or more of the ownership in the above named "firm".

Name	Job Title and City Department (if known)
<u>N/A</u>	<u>N/A</u>
_____	_____
_____	_____

2. State the names of each "official" of the City of Corpus Christi having an "ownership interest" constituting 3% or more of the ownership in the above named "firm".

Name	Title
<u>N/A</u>	<u>N/A</u>
_____	_____
_____	_____

3. State the names of each "board member" of the City of Corpus Christi having an "ownership interest" constituting 3% or more of the ownership in the above named "firm".

Name	Board, Commission, or Committee
<u>N/A</u>	<u>N/A</u>
_____	_____
_____	_____

4. State the names of each employee or officer of a "consultant" for the City of Corpus Christi who worked on any matter related to the subject of this contract and has an "ownership interest" constituting 35 or more of the ownership in the above named "firm".

Name	Consultant
<u>N/A</u>	<u>N/A</u>
_____	_____
_____	_____

**CERTIFICATE (To be notarized)**

I certify that all information provided is true and correct as of the date of this statement, that I have not knowingly withheld disclosure of any information requested; and that supplemental statements will be promptly submitted to the City of Corpus Christi, Texas as changes occur.

Certifying Person: Hunter CC I, LP  
Scott Rohrman

Signature of Certifying Person: Scott Rohrman, manager

Title: Manager of the G.P.

Date: 3/16/2012