

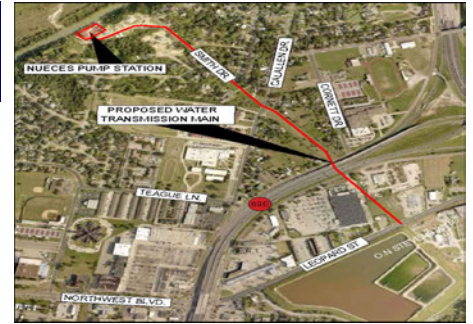
# Capital Improvement Plan

## City of Corpus Christi, Texas

2025 *thru* 2027

**Project #** 25014  
**Project Name** Nueces River Raw Water Pump Station Piping & System Upgr.

**Type** Improvement/Additions  
**Useful Life** 40 years  
**Category** Water Supply  
**Department** Water  
**Contact** Director of Water Utilities  
**Priority** Priority Level 1  
**Council District** 1  
**Status** Active



### Description

The O.N. Stevens Water Treatment Plant (ONSWTP) is executing a strategic upgrade plan to improve efficiencies and reliable treatment capacities. The Nueces River Pump Station supplies water from the Nuecess River to ONSWTP through 54-inch water lines. The Mary Rhodes Pipeline (MRP) is aligned in the same pipeline corridor with a 72-inch Pre-Cast Cylinder Pipeline. This project will modify the site piping of the pump station to improve operational flexibility which will allow for the water to be transmitted to ONSWTP from the Nueces River or the MRP through varying combinations of the 54-inch and 72-inch pipelines. The project will also complete the pipeline alignment of the new 54-inch diameter line to the same site and header piping. Additionally the low cover and slope stabilization areas in this pipeline corridor will be corrected.

### Justification

The header piping modifications will provide greater operational flexibility which will allow for future project LR 9 to potential slip line the original 1954 fifty-four inch diameter pipelines.

Expenditures	Prior Years	2025	2026	2027	Total
Construction/Rehab		14,659,005	10,000,000		24,659,005
Design		1,540,995			1,540,995
Eng, Admin Reimbursements		250,000	250,000		500,000
<b>Total</b>		<b>16,450,000</b>	<b>10,250,000</b>		<b>26,700,000</b>

Funding Sources	Prior Years	2025	2026	2027	Total
Revenue Bonds		16,450,000	10,250,000		26,700,000
<b>Total</b>		<b>16,450,000</b>	<b>10,250,000</b>		<b>26,700,000</b>

### Budget Impact/Other

This project is critical component of the planned upgrades at the ONSWTP.