

# MONTHLY AIR SERVICE REPORT



The logo for Aerus Airlines, featuring the word "Aerus" in a dark blue, sans-serif font.

- Delayed launch into the United States
  - TSA Rules and Regulations
- Working on Code Share Agreement
  - Allow seamless connections throughout Mexico, Cuba, Columbia, and Ecuador
  - Ease of Website navigation and booking
  - Checked baggage
  - Vacation packages
  - Many other benefits
- New Launch for Corpus Christi,  
Date March 1, 2025

# Air Service Updates – United Airlines

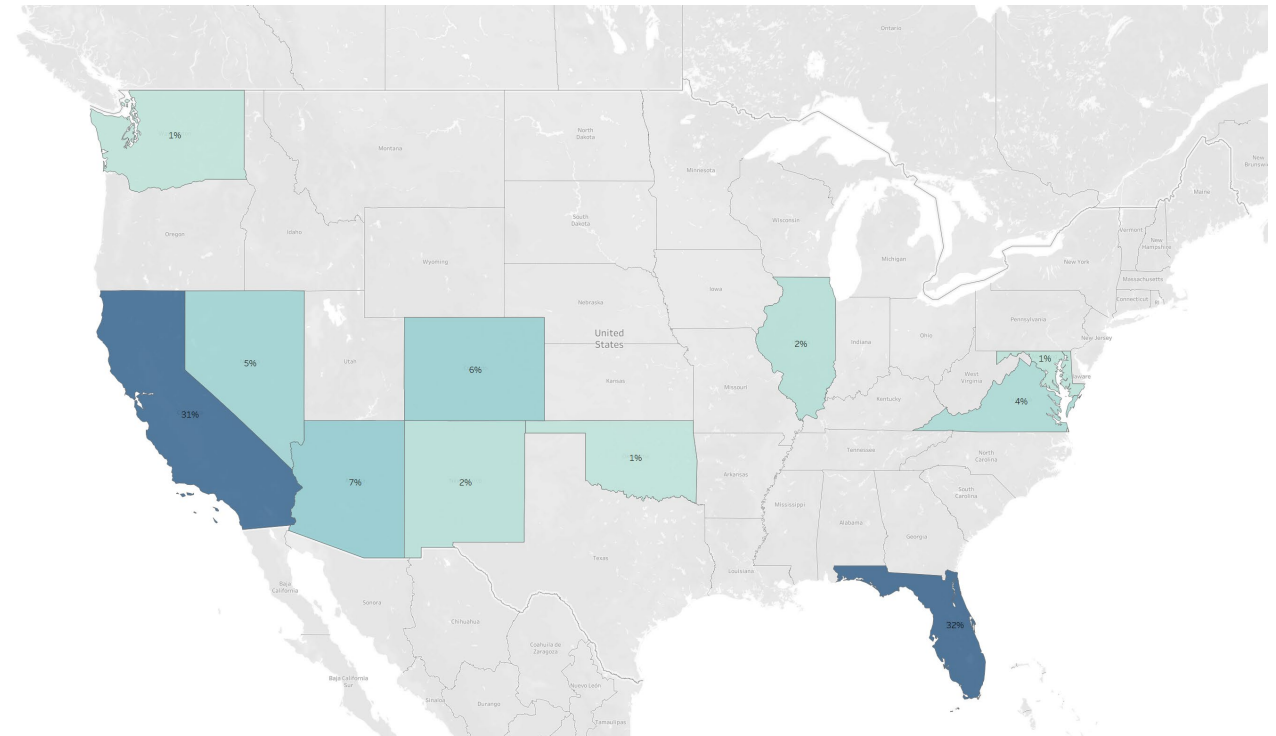
- United, CCIA and Intervistas Meeting
- September 10<sup>th</sup> via Zoom
- CCIA Attendees:
  - Kevin Smith
  - Lacey Guzman
- United Attendees:
  - Dylan Kleopfer, Principal Network Planning, DEN Hub
  - Colin Cook, Sr. Analyst. Global Network Planning, IAH Hub
  - Samuel Levy, Senior Manager, Capacity Planning, Domestic



## 52% of New Corpus Christi Area Residents Come From Western States

Percentage of In-Migration by State  
2019 to 2022

- In-migration is largely spread across western states

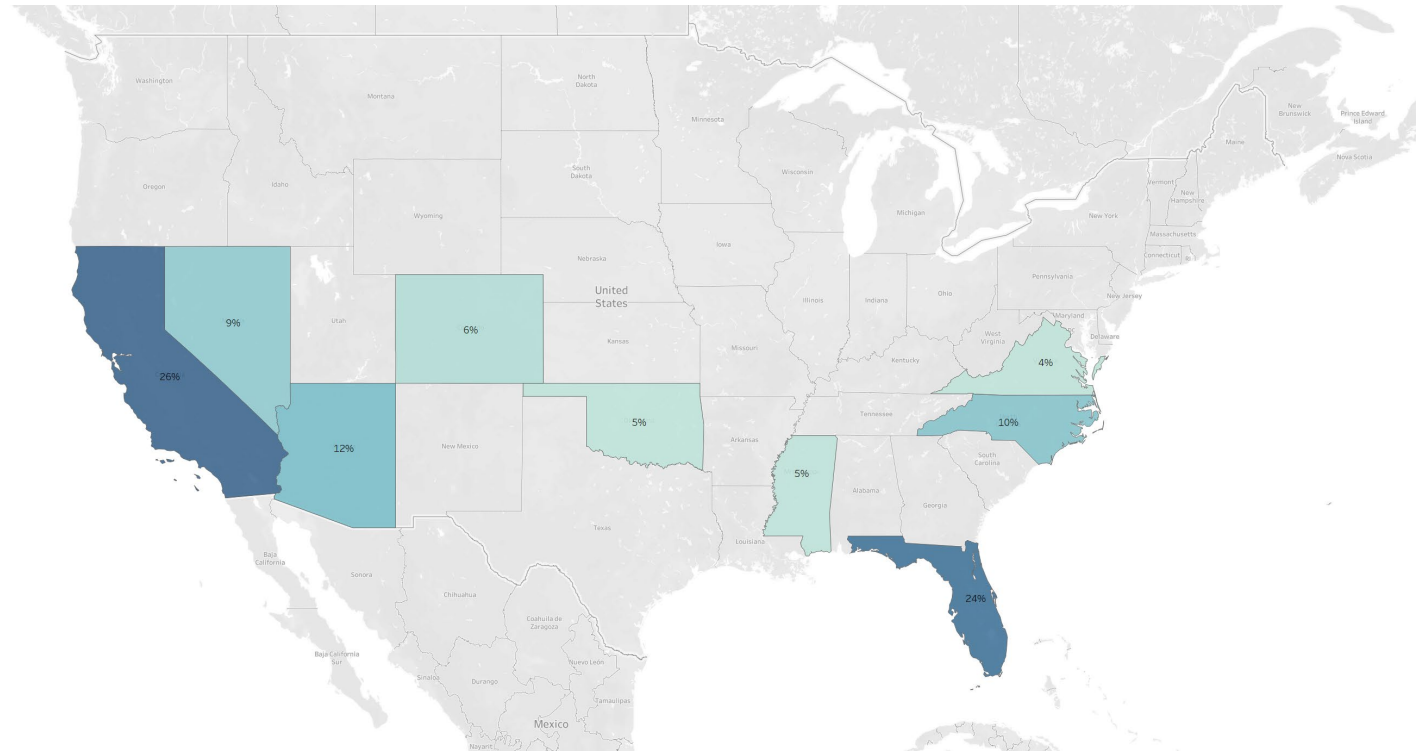


# Air Service Updates – United Airlines

## 53% of New Corpus Christi Area Out-Migration is to Western States

Percentage of Out-Migration by State  
2019 to 2022

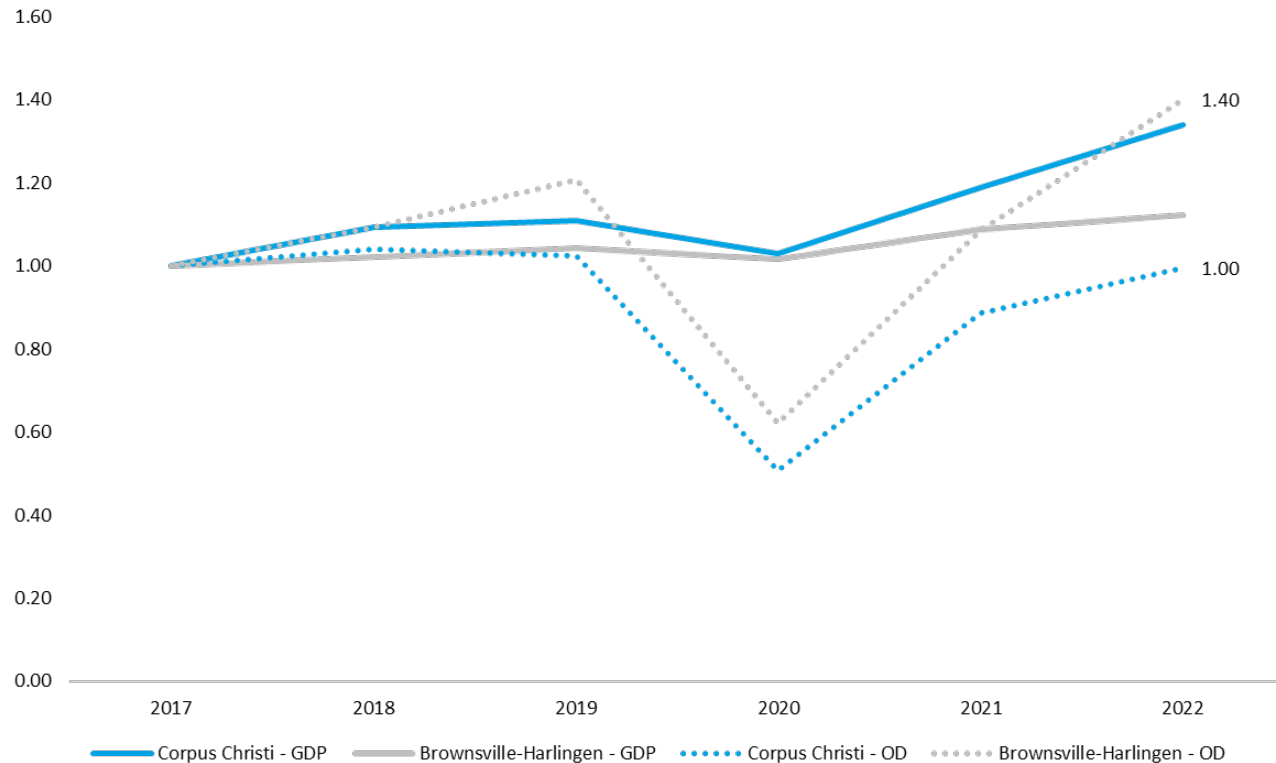
- Out-migration is largely spread across western states



# Air Service Updates – United Airlines

## Corpus Christi GDP Growth Outpaces Other South Texas MSAs While O&D Growth Lags

Index Change in MSA GDP and O&D from 2017  
2017 = 1



- While the Corpus Christi MSA has experienced faster GDP growth than Brownsville-Harlingen, the number of O&D passenger has not increased

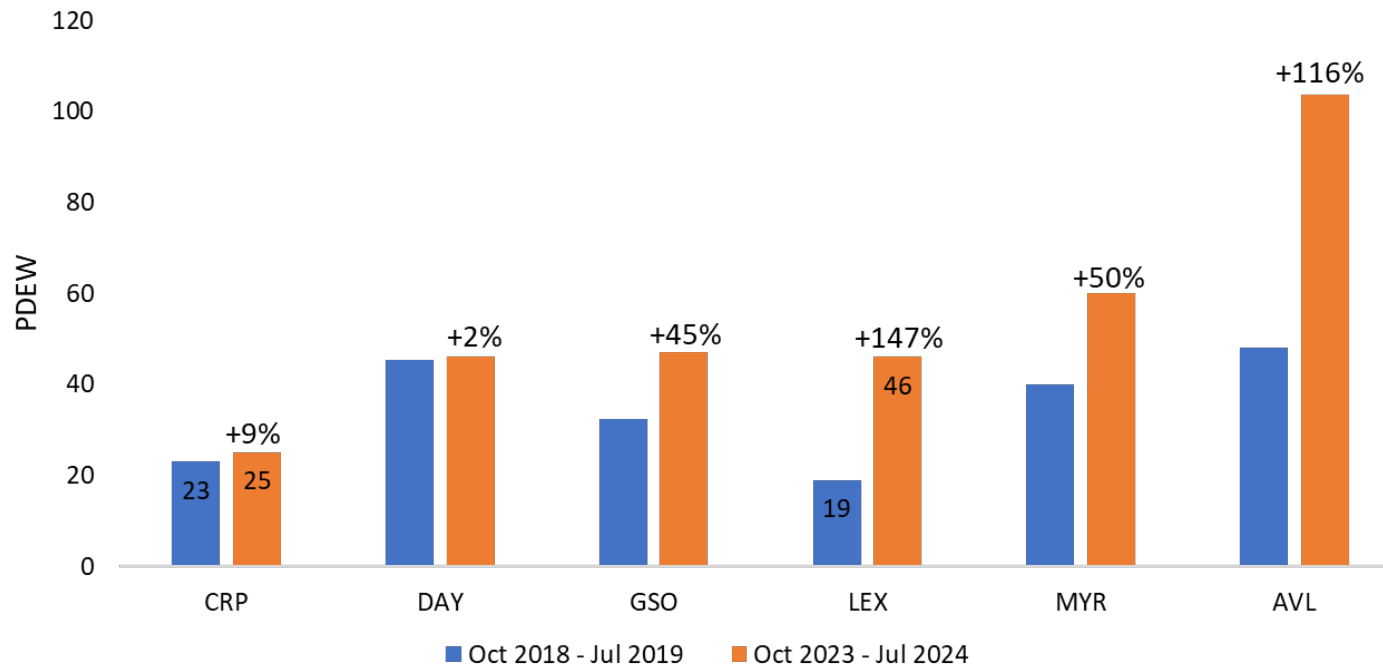
THIS IS AN INDICATOR OF LEAKAGE.

# Air Service Updates – United Airlines

## Recent United – DEN Additions Have Successfully Stimulated Local O&D Market by 50%+ from Same Pre-Pandemic Period

### O&D Demand in Select New United – DEN Markets

10-month Period Ending Jul 2019 vs. Jul 2024



- Markets of similar size were stimulated upwards of 50% when DEN service on UA was added

# Corpus Christi International Airport

## General Activity Report

REPORTING PERIOD - AUGUST 2024

PASSENGERS	MONTHLY ACTUALS					YTD ACTUALS (AUGUST 2024)				
	2024	2023	2022	% CHANGE 2024 to 2023	% CHANGE 2023 to 2022	2024	2023	2022	% CHANGE 2024 to 2023	% CHANGE 2023 to 2022
AMERICAN EAGLE	13,253	13,119	10,118			101,207	98,172	78,622		
SOUTHWEST	8,615	8,933	10,113			76,493	78,939	79,344		
UNITED AIRLINES	9,525	7,300	7,230			72,441	57,642	54,604		
CHARTER FLIGHTS	161	284	140			1,887	2,093	1,504		
<b>ENPLANED</b>	<b>31,554</b>	<b>29,636</b>	<b>27,601</b>	<b>6%</b>	<b>14%</b>	<b>252,028</b>	<b>236,846</b>	<b>214,074</b>	<b>6%</b>	<b>18%</b>
AMERICAN EAGLE	13,661	12,551	10,015			101,828	96,471	77,882		
SOUTHWEST	8,556	8,897	9,885			74,504	76,997	76,538		
UNITED AIRLINES	9,388	7,156	6,596			69,904	55,818	52,849		
CHARTER FLIGHTS	159	285	141			1,931	2,160	1,646		
<b>DEPLANED</b>	<b>31,764</b>	<b>28,889</b>	<b>26,637</b>	<b>10%</b>	<b>19%</b>	<b>248,167</b>	<b>231,446</b>	<b>208,915</b>	<b>7%</b>	<b>19%</b>
<b>TOTALS</b>	<b>63,318</b>	<b>58,525</b>	<b>54,238</b>	<b>8%</b>	<b>17%</b>	<b>500,195</b>	<b>468,292</b>	<b>422,989</b>	<b>7%</b>	<b>18%</b>

LOAD FACTOR	2024	2023	2022			2024	2023	2022		
AMERICAN EAGLE	84.0%	82.2%	84.8%			81.6%	84.7%	88.1%		
SOUTHWEST	68.1%	53.1%	60.9%			61.6%	60.6%	69.8%		
UNITED AIRLINES	80.5%	74.3%	87.1%			77.3%	81.2%	85.4%		
<b>CUMMULATIVE LOAD FACTOR</b>	<b>78.4%</b>	<b>69.6%</b>	<b>74.9%</b>			<b>73.7%</b>	<b>74.7%</b>	<b>80.2%</b>		

SEATS AVAILABLE	2024	2023	2022	% CHANGE 2024 to 2023	% CHANGE 2023 to 2022	2024	2023	2022	% CHANGE 2024 to 2023	% CHANGE 2023 to 2022
AMERICAN	15,774	15,960	11,938	-1%	32%	124,085	115,903	89,252	7%	39%
SOUTHWEST	12,652	16,816	16,605	-25%	-24%	124,276	130,278	113,619	-5%	9%
UNITED	11,838	9,820	8,300	21%	43%	93,740	70,962	63,950	32%	47%
<b>TOTALS</b>	<b>40,264</b>	<b>42,596</b>	<b>36,843</b>	<b>-5%</b>	<b>9%</b>	<b>342,101</b>	<b>317,143</b>	<b>266,821</b>	<b>8%</b>	<b>28%</b>



# Corpus Christi International Airport

## General Activity Report

REPORTING PERIOD - AUGUST 2024

FREIGHT IN LBS. (by 1,000)										
	2024	2023	2022	% CHANGE 2024 to 2023	% CHANGE 2023 to 2022	2024	2023	2022	% CHANGE 2024 to 2023	% CHANGE 2023 to 2022
AMERICAN EAGLE	300	2	152			1,343	20	6,208		
SOUTHWEST	4,295	3,401	2,713			26,520	32,811	35,421		
UNITED AIRLINES	97	7	273			206	58	1,293		
AMERIFLIGHT	22,094	20,138	23,657			164,191	142,074	154,273		
MARTINAIRE	-	-	-			-	19,268	2,261		
<b>ENPLANED</b>	<b>26,786</b>	<b>23,548</b>	<b>26,795</b>	<b>14%</b>	<b>0%</b>	<b>192,260</b>	<b>194,231</b>	<b>199,456</b>	<b>-1%</b>	<b>-4%</b>
AMERICAN EAGLE	1	24	448			3,605	1,948	6,817		
SOUTHWEST	11,821	10,722	12,465			91,452	83,434	84,817		
UNITED AIRLINES	31	2	145			537	456	520		
AMERIFLIGHT	99,746	95,167	61,549			581,006	466,270	573,701		
MARTINAIRE	-	-	0			79,025	74,272	5,388		
<b>DEPLANED</b>	<b>111,599</b>	<b>105,915</b>	<b>74,607</b>	<b>5%</b>	<b>50%</b>	<b>755,625</b>	<b>626,380</b>	<b>671,243</b>	<b>21%</b>	<b>13%</b>
<b>TOTALS</b>	<b>138,385</b>	<b>129,463</b>	<b>101,402</b>	<b>7%</b>	<b>36%</b>	<b>947,885</b>	<b>820,611</b>	<b>870,699</b>	<b>16%</b>	<b>9%</b>

AIRCRAFT OPERATIONS										
	2024	2023	2022	% CHANGE 2024 to 2023	% CHANGE 2023 to 2022	2024	2023	2022	% CHANGE 2024 to 2023	% CHANGE 2023 to 2022
AIR TAXI	1,714	1,562	1,538	10%	11%	12,977	12,143	11,429	7%	14%
GENERAL AVIATION	2,408	1,272	1,128	89%	113%	13,879	10,664	9,336	30%	49%
MILITARY	3,817	4,946	6,063	-23%	-37%	33,610	36,635	31,257	-8%	8%
<b>TOTALS</b>	<b>7,939</b>	<b>7,780</b>	<b>8,729</b>	<b>2%</b>	<b>-9%</b>	<b>60,466</b>	<b>59,442</b>	<b>52,022</b>	<b>2%</b>	<b>16%</b>

# Corpus Christi International Airport

## General Activity Report

REPORTING PERIOD - AUGUST 2024

