



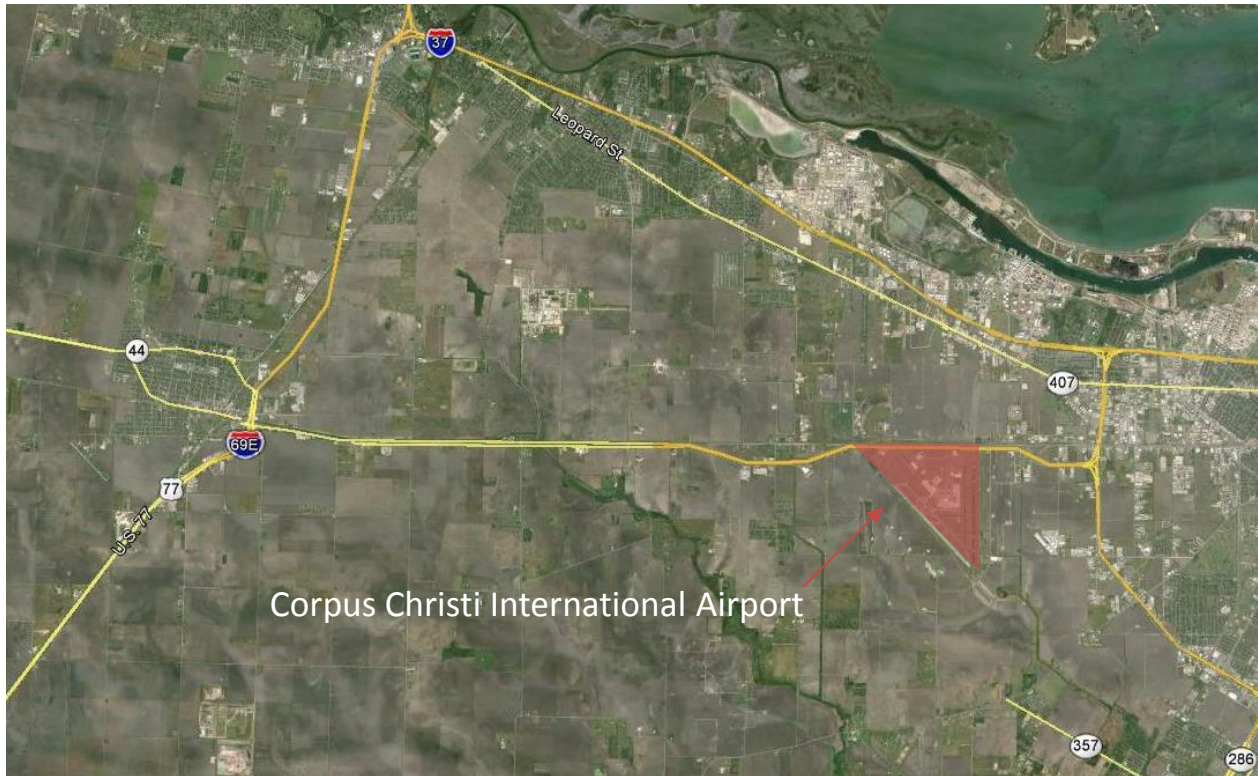
Corpus Christi International Airport Runway 17-35 Connection Displacement and Connecting Taxiways Project



Council Presentation
December 8, 2015

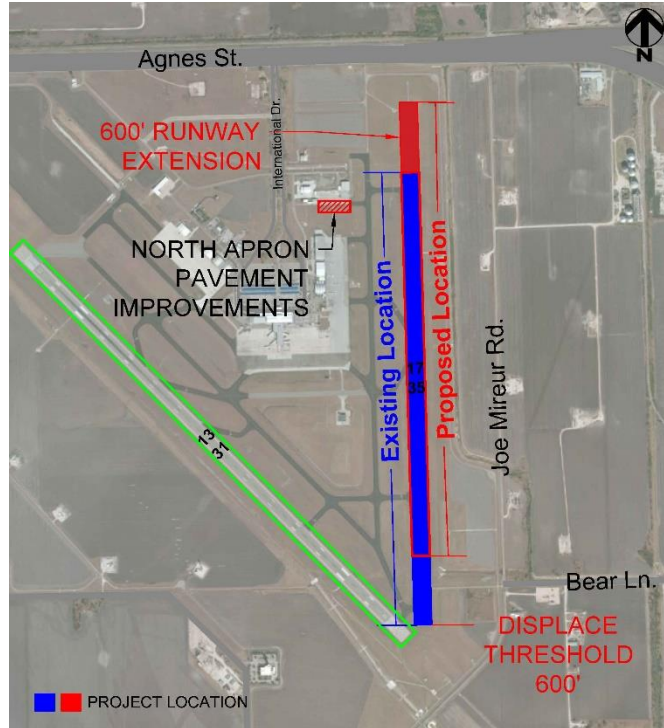


Project Location





Project Scope

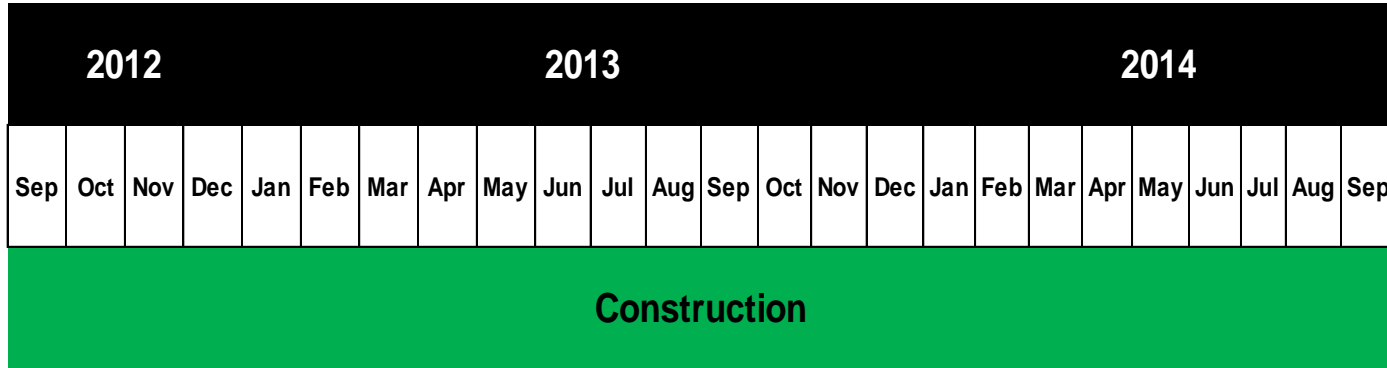


Project includes:

- Extend 17 Runway 600' North
- Displace 35 Runway Threshold 600' North as an FAA-required safety enhancement
- North Apron Pavement Improvements
- LED Lighting & Navigation Aide Upgrades



Project Schedule



Project Construction Estimate: 730 Calendar Days \approx 24 Months

Project Substantially complete: September 2014