



# **Zoning Case #0715-03 Related Investors, Ltd.**

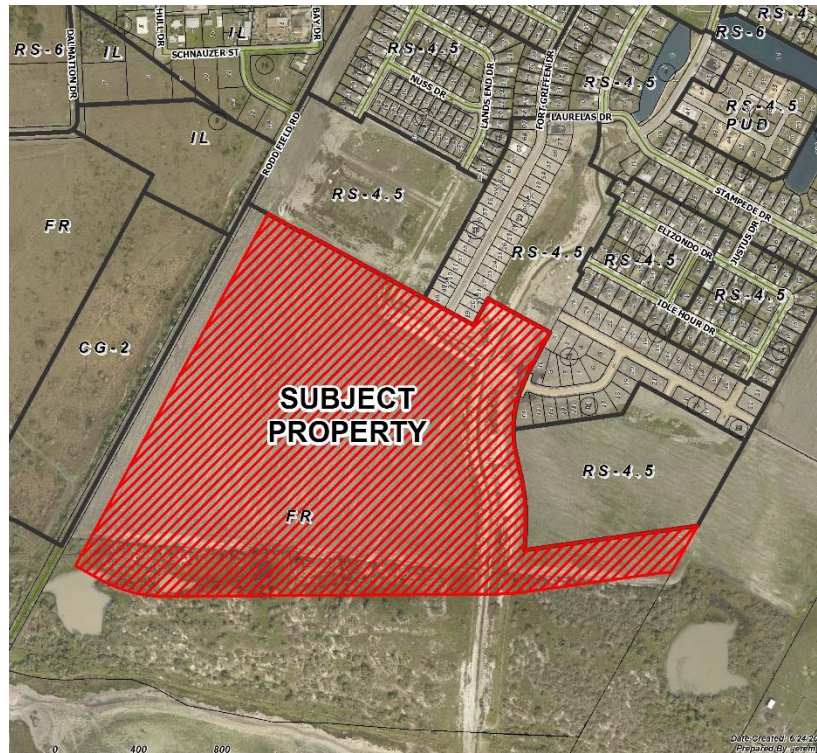
**From:** "FR" Farm Rural District  
**To:** "RS-4.5" Single-Family 4.5 District

Planning Commission  
Presentation  
July 15, 2015



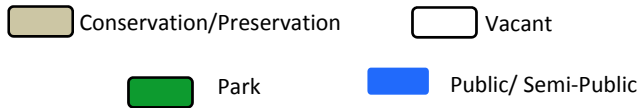
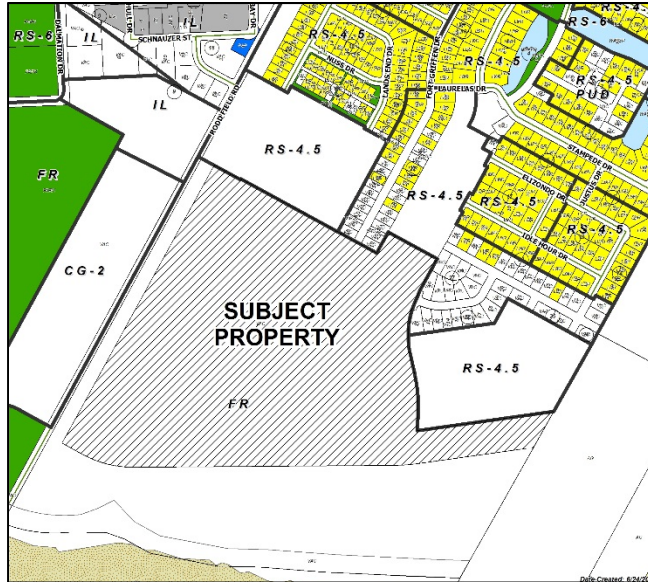


# Aerial

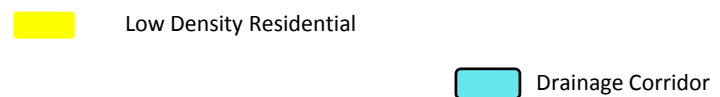
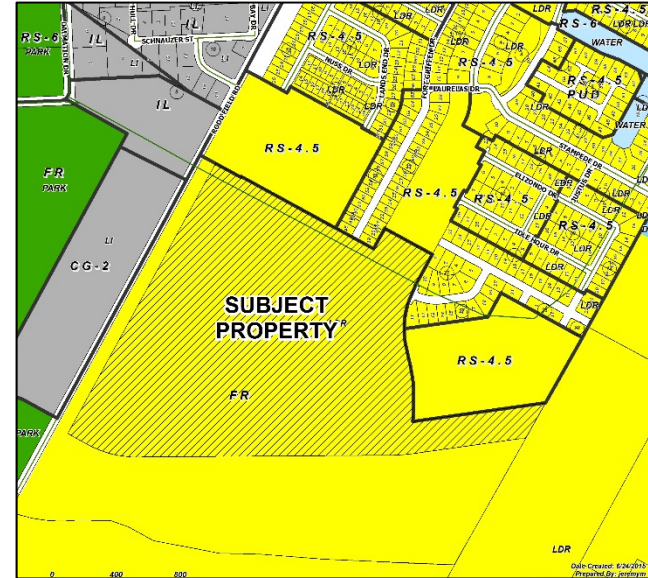




## Existing Land Use

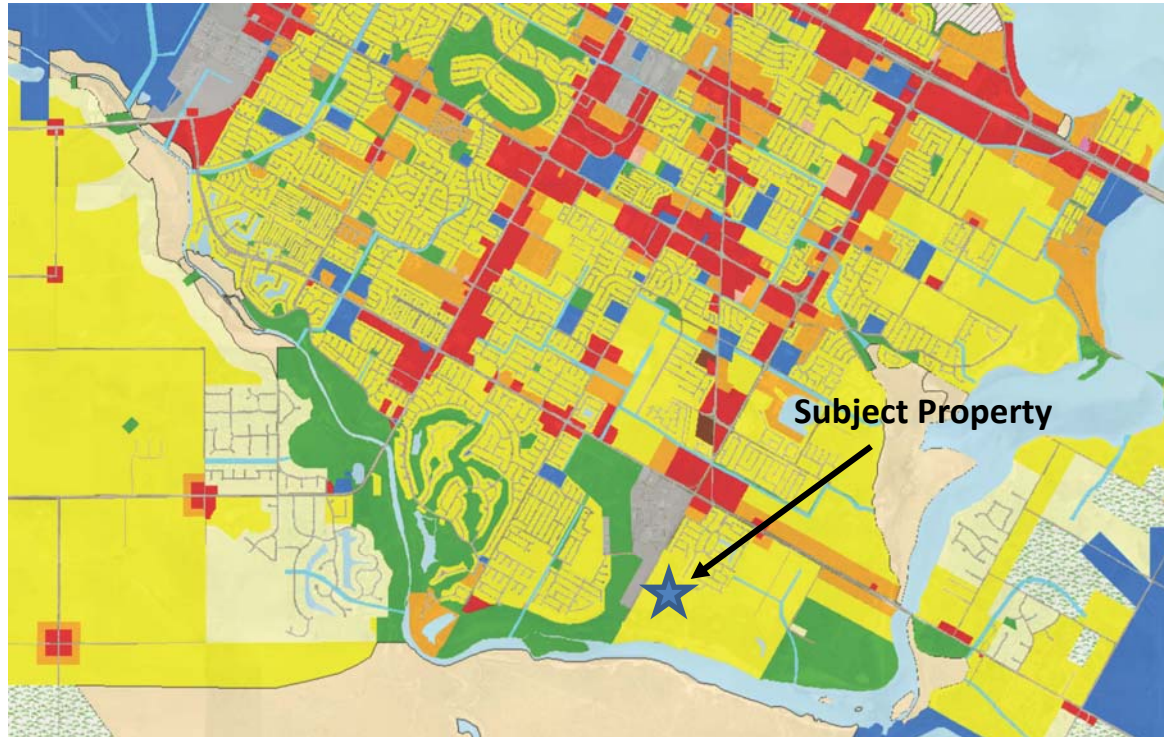


## Future Land Use



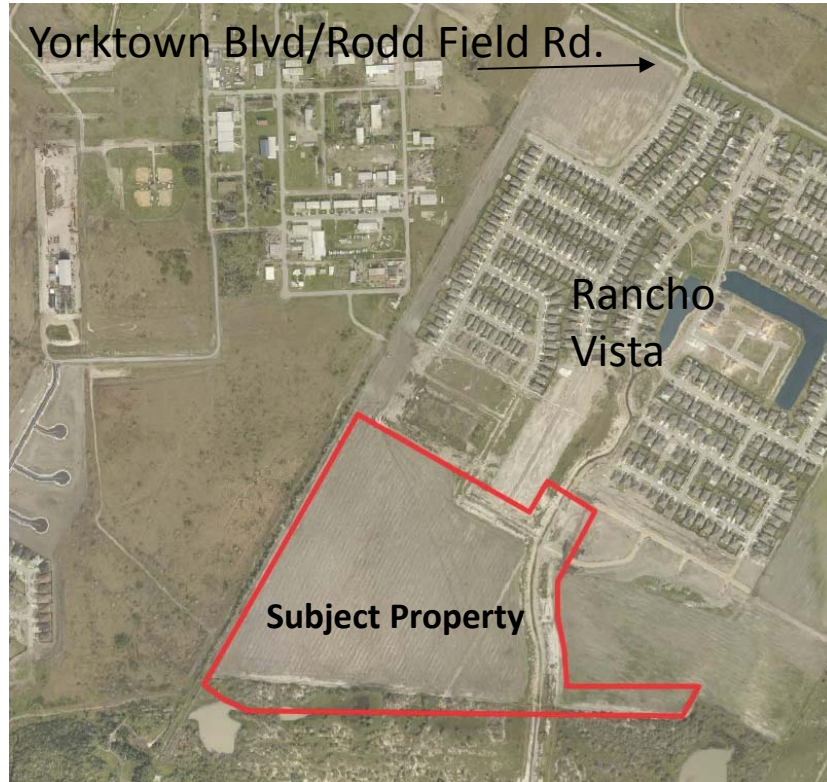


# Future Land Use Map





# Description





# South From Fort Griffen Drive

---



**Subject  
Property**



# East From Fort Griffen Drive

---









# Staff Recommendation

---

## **Approval of the “RS-4.5” Single-Family 4.5 District**