

City of Corpus Christi Fire Department Office of Emergency Management



PHASED EVACUATION



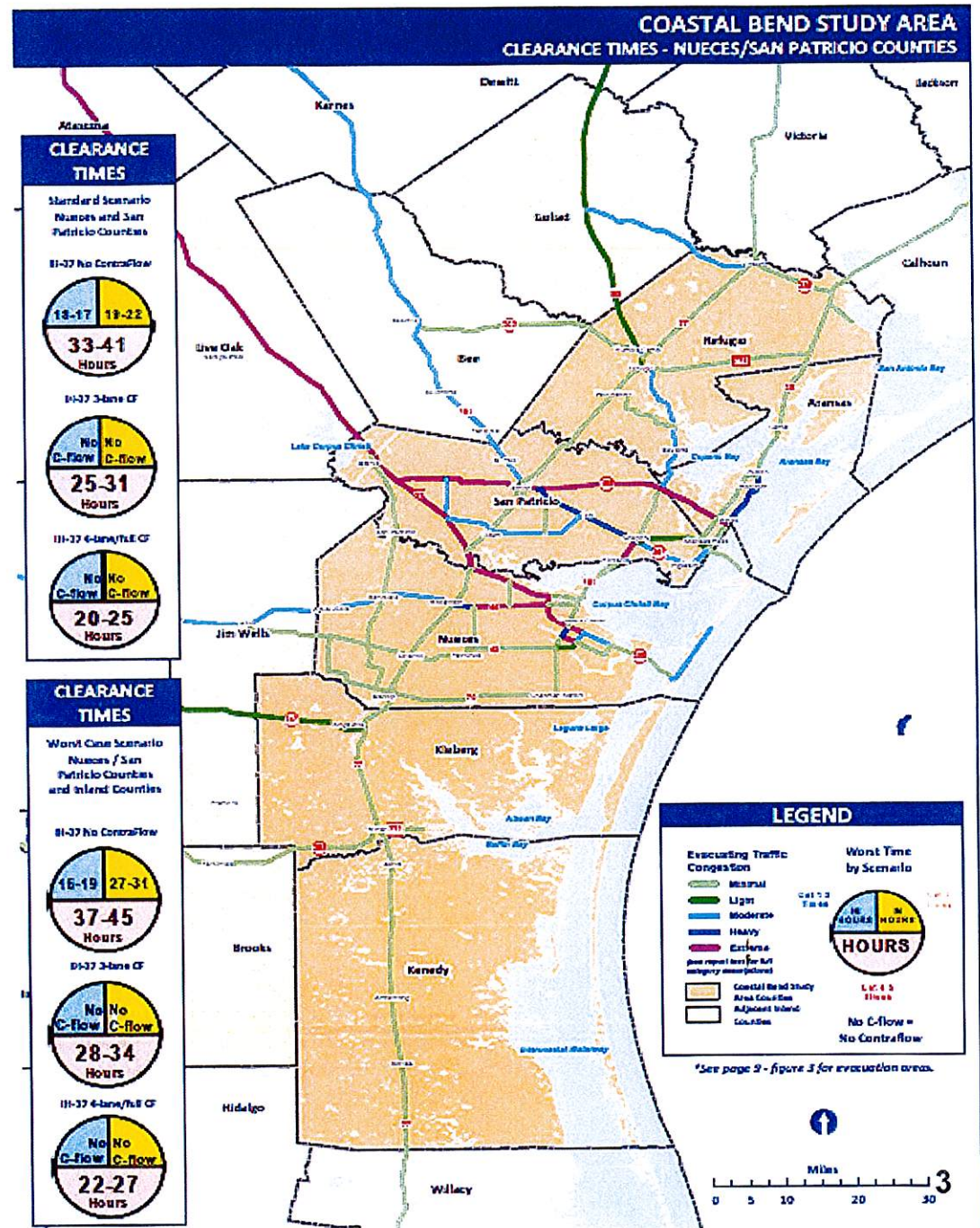
Evacuation Trigger Points

- Storm Intensity
- Storm Size
- Forward Motion
- Cone of Error
- Forecast Confidence
- Anticipated Storm Surge Inundation
- Decision Timing
- Occupancy
- Availability of Resources

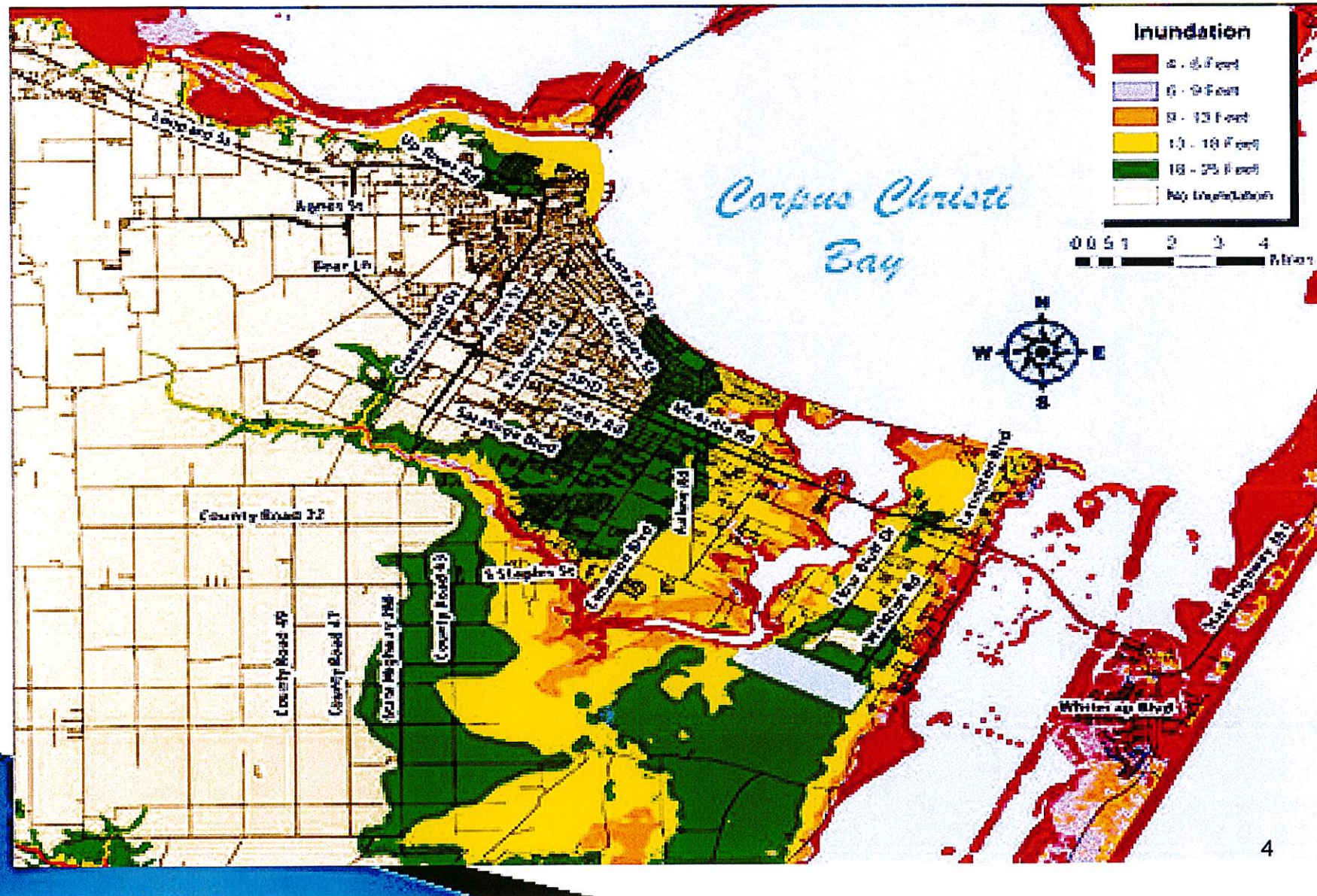


Times

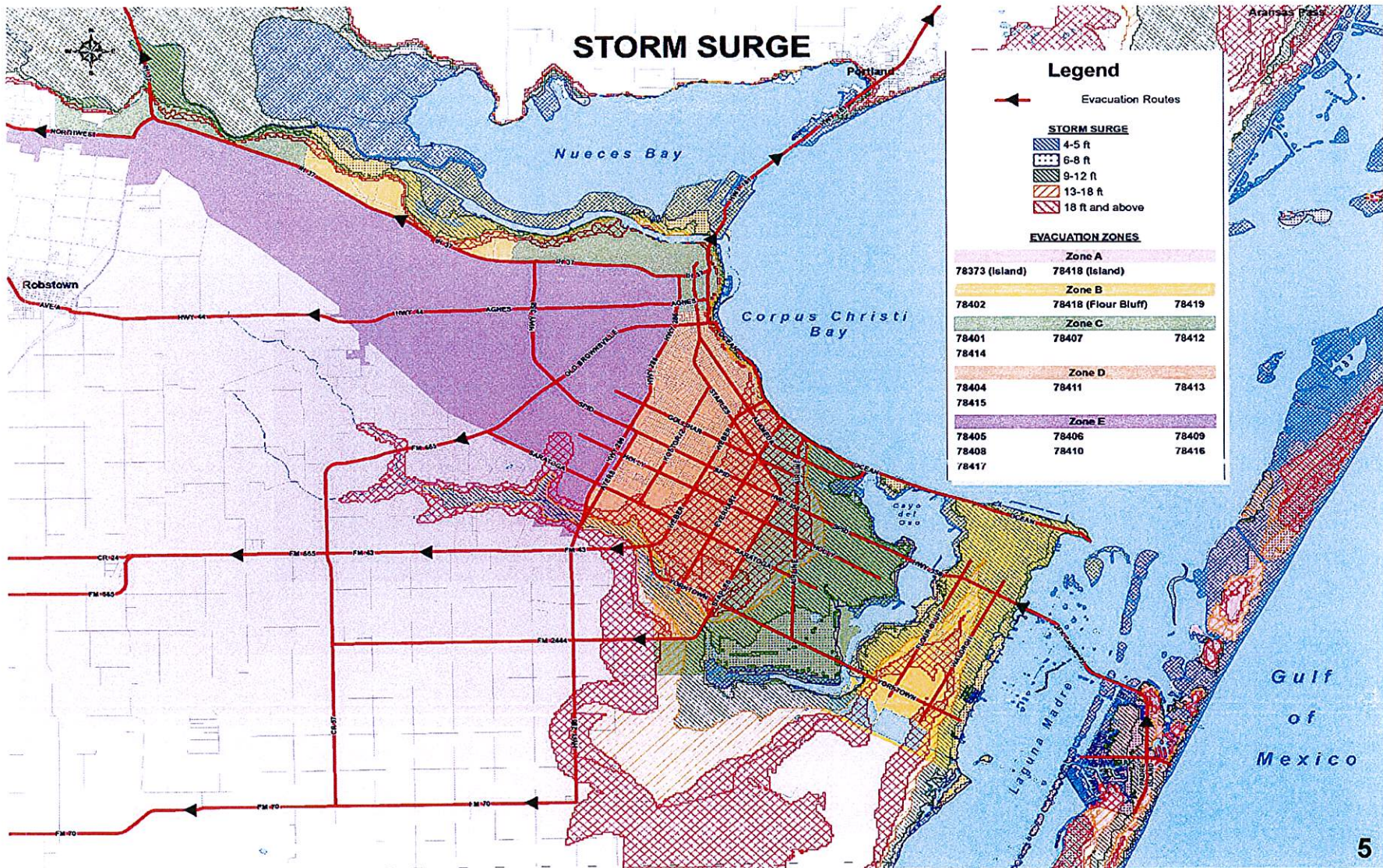
- Standard Scenario
- Worst Case Scenario
- Evacuation Lane
- Contraflow
- Rapid Response
- Medium Response
- Long Response
- High Occupancy
- Low Occupancy



Inundation



Evacuation Surge Planning Tool

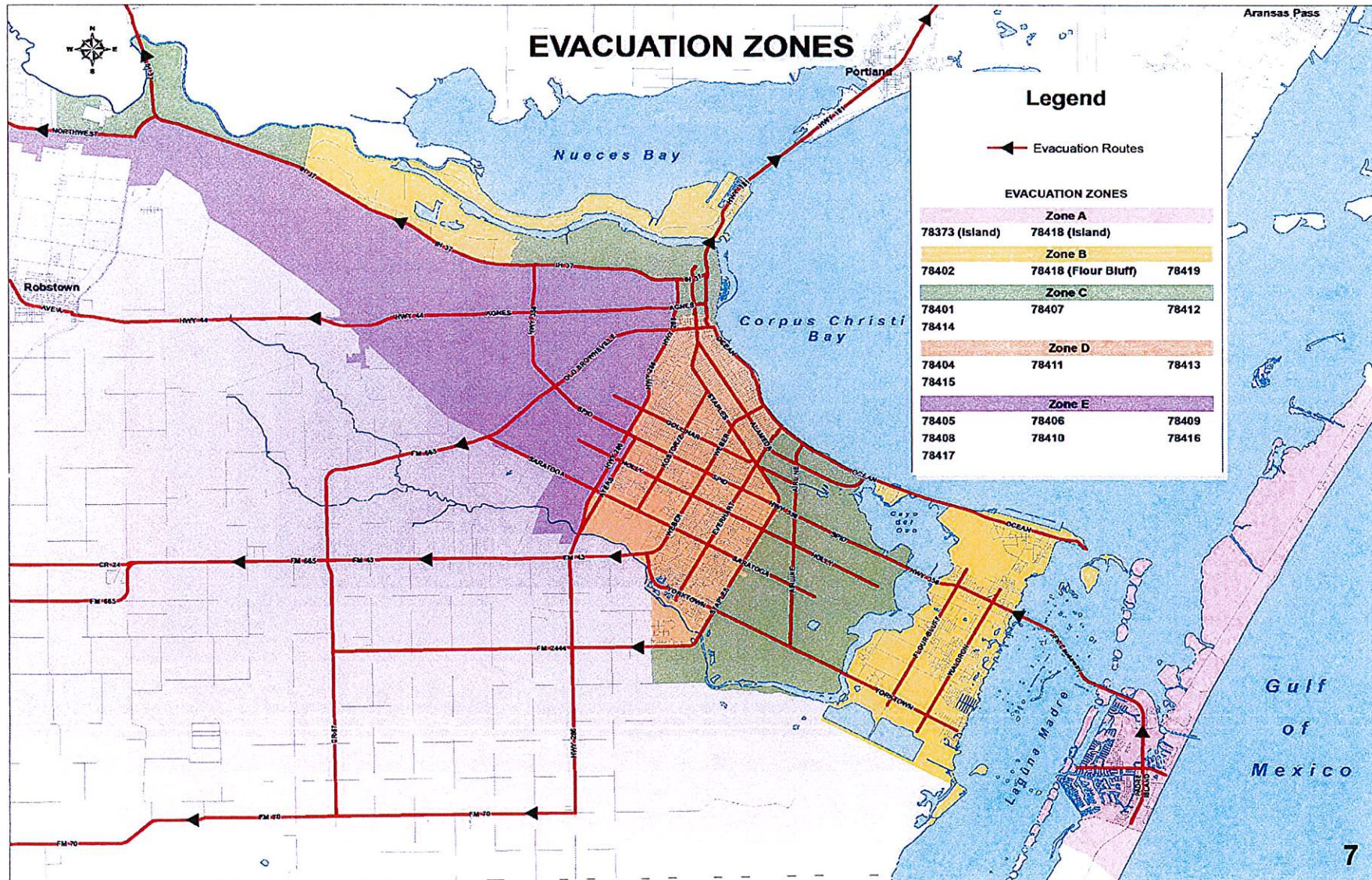


Evacuation Zones

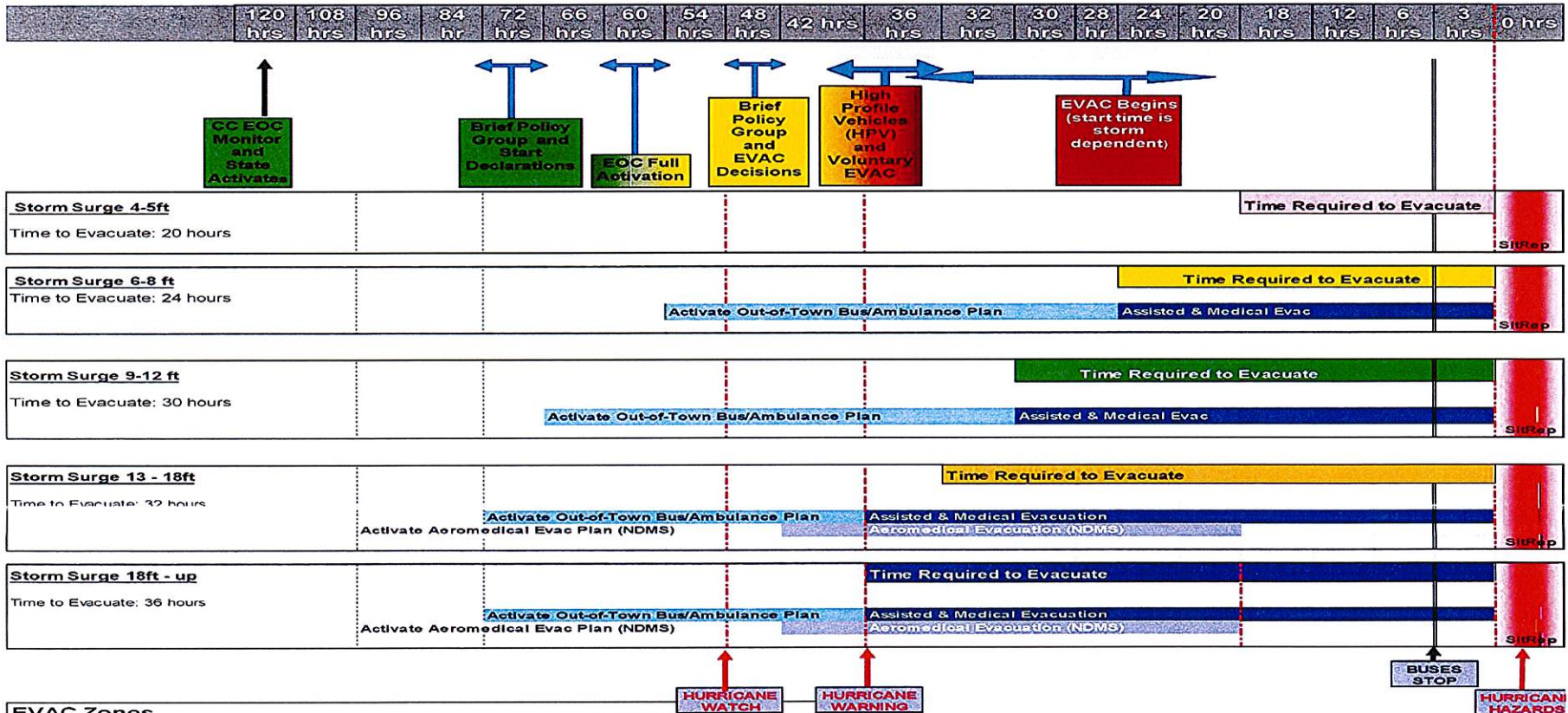
- Zone A: Port Aransas & Padre Island
- Zone B: Flour Bluff / North Beach / TAMUCC/ Portions of the Port
- Zone C: South Side/ Port
- Zone D: Midtown
- Zone E: All others & Western County
- In coordination with Port Aransas and Nueces County a decision will be made if we will evacuate and which zones need to be evacuated. Once the decision is made that will trigger the evacuation plan to begin. The first priority will be to evacuate the high profile vehicles from Port Aransas Padre Island (Zone A).



Phased Evacuation Zones



Evacuation Planning Timeline



EVAC Zones		36-32 Hours	32-30 Hours	30 - 28 Hours	28-24 Hours	24-20 Hours	20-18 Hours	18 -12 Hours	12- 6 Hours	6 - 3 Hours	3 hours
Zone A	Island							storm surge 4-5			stop buses
Zone B	FB & N. Beach				surge 6-8ft	surge 6-8ft	surge 6-8ft	storm surge 4-5			stop buses
Zone C	S. Side 5-ped			surge 9-12ft	surge 9-12ft	surge 9-12ft	surge 9-12ft	storm surge 4-5			stop buses
Zone D	Midtown		13-18ft	surge 9-12ft	surge 9-12ft	surge 9-12ft	surge 9-12ft	storm surge 4-5			stop buses
Zone E	Remaining County	18-up	13-18ft	surge 9-12ft	surge 9-12ft	surge 9-12ft	surge 9-12ft	storm surge 4-5			stop buses

Note: Evacuation timing contingent upon implantation of traffic management plan.

RTA Collection Points

- Staples Street Station (Staples & Leopard across from City Hall)
- Port Ayers Station (located near the Port Ayers Y)
- Southside Station (on McArdle behind Padre Staples Mall)
- Flour Bluff Station (on Waldron behind HEB)



Collection Points

- RTA buses will pick up riders at these four points and will transport them to Corpus Christi Gym on Saratoga for subsequent evacuation from city by CCISD buses. If the collection points begin to overwhelm the RTA buses CCISD has agreed to send buses to help transport to Corpus Christi Gym from the collection sites. The school buses used to shuttle riders from the collection points to Corpus Christi Gym.

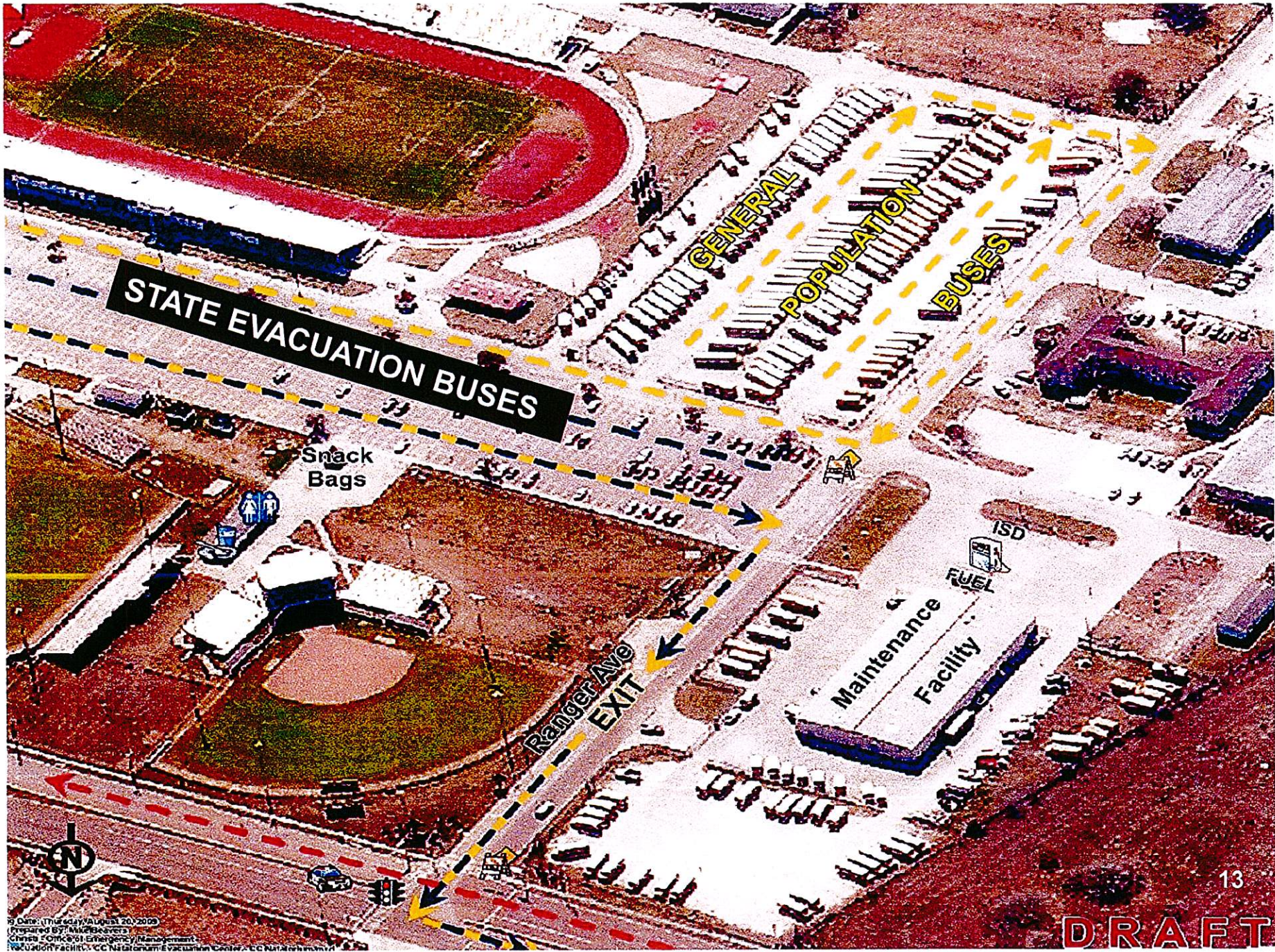




Registration

- Register citizens using Texas Evacuation Tracking Network . Evacuees will receive a numbered ID Bracelet and asset tag for durable medical equipment and pets.
- Color coded bus passes will be issued for boarding.





19 Date: Thursday August 20, 2009
Prepared By: Mike Beckwith
Client: Office of Emergency Management
Evacuation Facility: CC National Emergency Center, CC National

DRAFT

Boarding the Bus

- Fire Prevention or City Staff will provide the Bus Driver with a manifest of riders on board.
- Snack bags will be distributed to evacuees upon departure.



Questions



**Contact the office of
Emergency Management at
826-1100 or follow us on
facebook "Ready CC"**

